



# LG V10 Dual Front Cameras Replacement

This step-by-step guide will show you how to replace the dual front cameras for the LG V10.

Written By: Joseph



## INTRODUCTION

Shutdown the LG V10 before replacing any component. When taking a selfie, if the displays appears as a black screen even in a well-lit room, then the front camera is malfunctioning and may need to be replaced.



### TOOLS:

- [Spudger](#) (1)
- [iFixit Opening Tools](#) (1)
- [Tweezers](#) (1)
- [Phillips #000 Screwdriver](#) (1)



### PARTS:

- [LG V10 Dual Front Cameras](#) (1)

## Step 1 — Battery



- Wedge the flat end of the plastic spudger, or the tip of your finger, in between the back cover and the LG V10's charging port.
- ⚠ If using a spudger, it should not be in the charging port, but between the metal lining of the charging port and the back cover.
- Carefully lift up on the spudger or with your finger so that the back cover pops up. The rest of the back cover should easily come off by sliding a finger or spudger under the back cover and around the sides.

## Step 2



- There's an impression next to the battery for the user to use their finger to pry the battery out; pry the battery out using your finger or the flat end of the spudger.

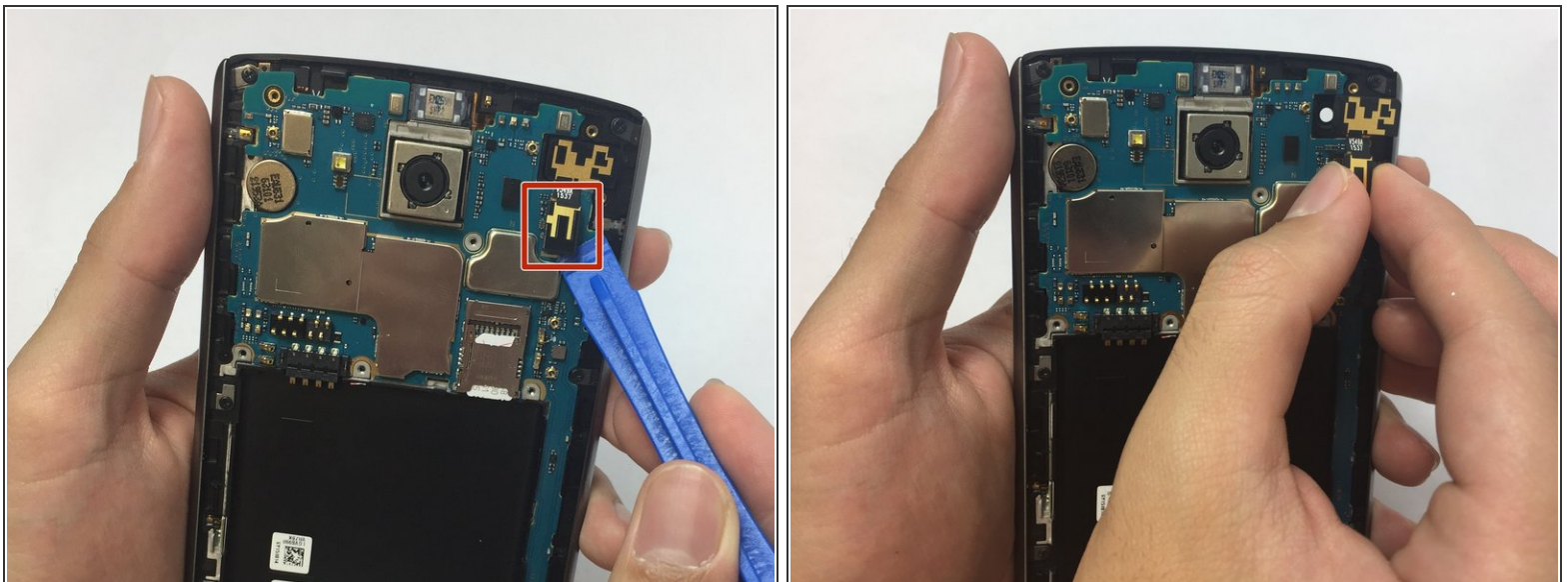


## Step 3 — Dual Front Cameras



- Using a screwdriver with a J000 Phillips bit, remove fourteen 3.175 mm screws.
- Using a plastic opening tool, pry part of the panel up starting from the sides of the battery slot.
- Use plastic tweezers to release the rest of the panel from plastic bits holding it in place and pry the panel up around the sides surrounding the fingerprint sensor and camera lens.

## Step 4



- Using the flat end of a plastic spudger or a plastic opening tool, wedge it under the front cameras' motherboard connection and disconnect it.

After replacing the dual front cameras, follow these instructions in reverse order to reassemble the LG V10.