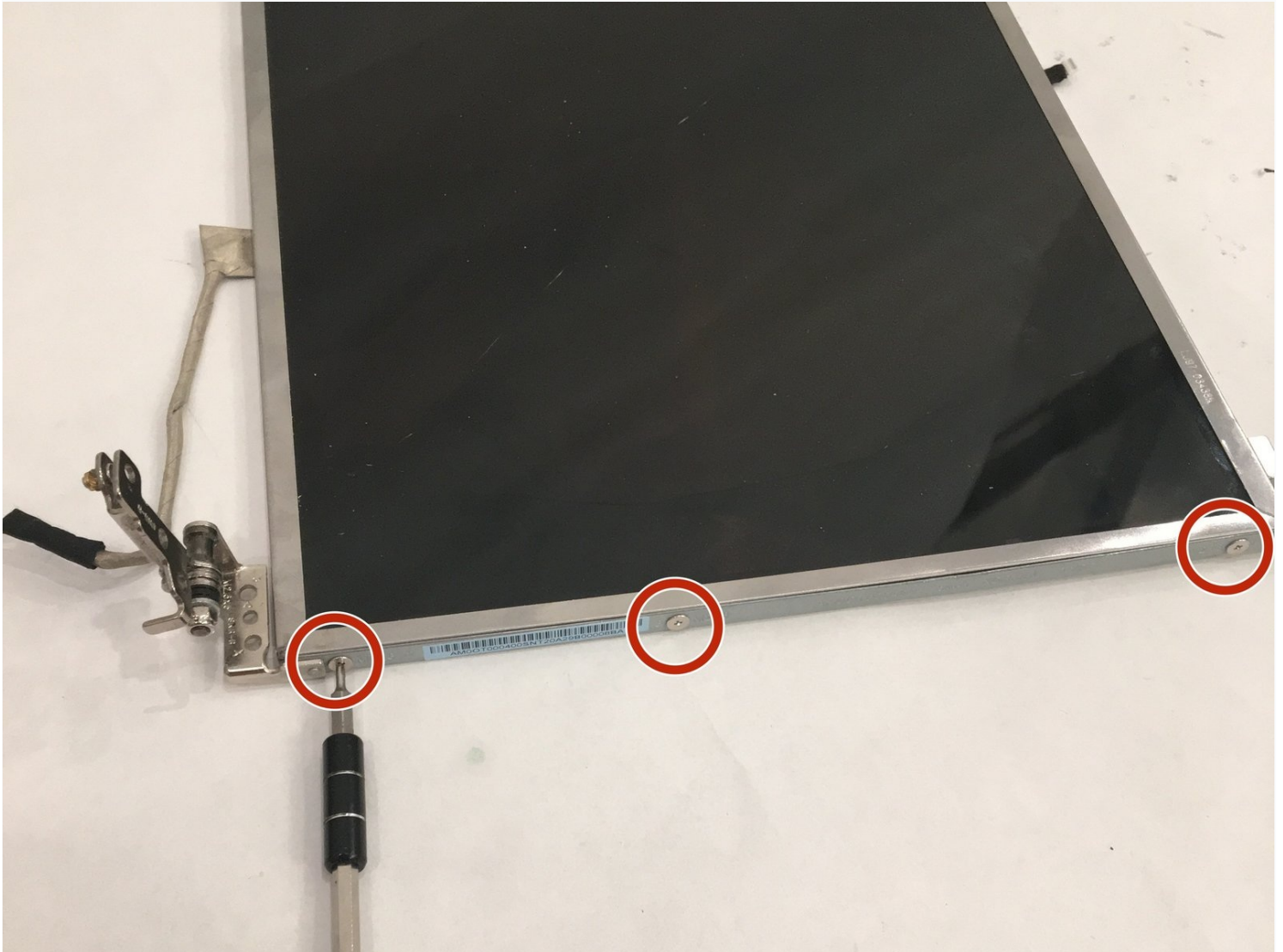




# Toshiba Satellite P855-S5312 Hinge Replacement

Guide is to replace the hinge of the Toshiba...

Written By: James Wiehle



# INTRODUCTION

Guide is to replace the hinge of the Toshiba Satellite P855-S5312 . Reasons for replacement would be if the screen will not stay in place being to flimsy because hinge. Tools required for guide are phillips size 0 screwdriver.

---

## TOOLS:

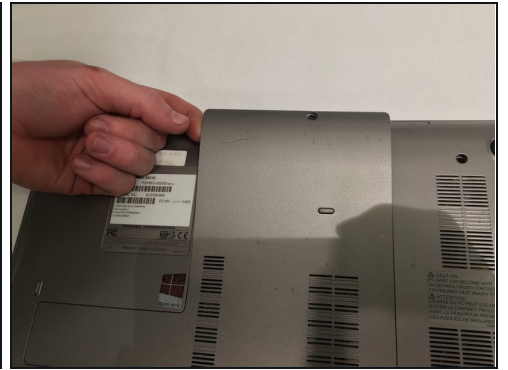
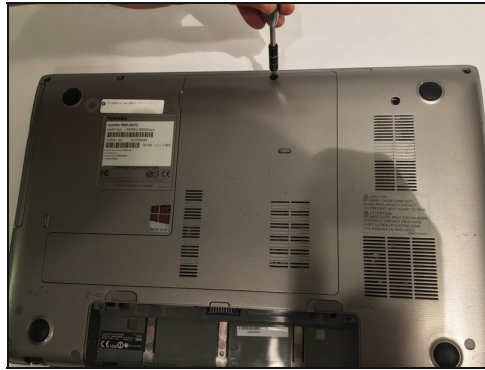
[iFixit Opening Tool](#) (1)

[Tweezers](#) (1)

[Phillips #0 Screwdriver](#) (1)

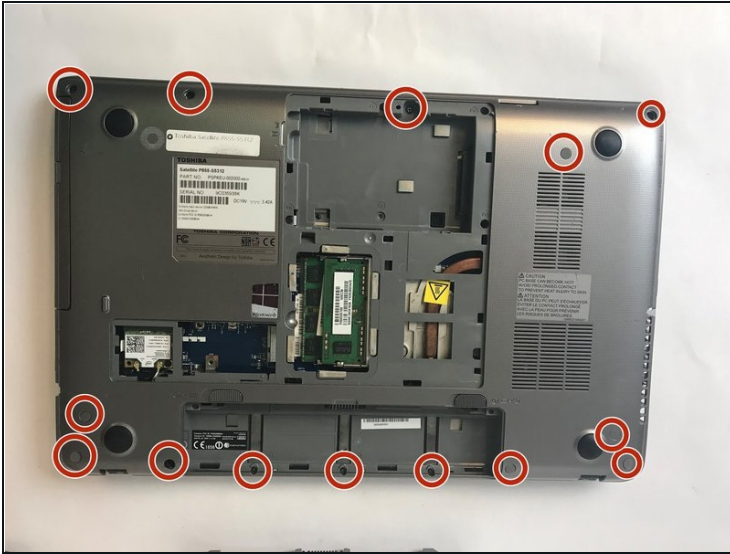
---

## Step 1 — Fan



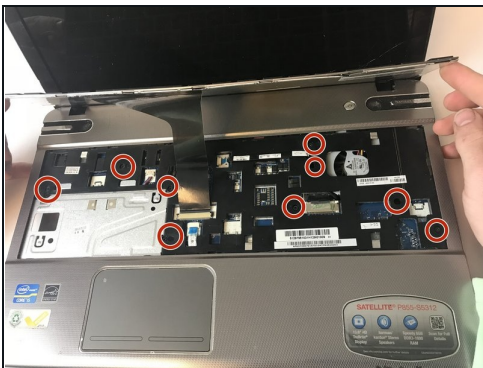
- Unscrew the one 1.5mm screw using a Philips #0 screwdriver holding the L shape panel.
- Pry up the panel to gain access to hidden screws.

## Step 2



- Remove the fourteen (14) screws using a Philips #0 screwdriver for the 1.5mm screws on the underside of casing.

## Step 3



- Unscrew the nine 1.5mm screws using a Philips #0 screwdriver under the keyboard with the F6 printed next to them.
- Unplug the three no-fuss ribbon cable connector cables by gently pulling on them away from you towards the keyboard.

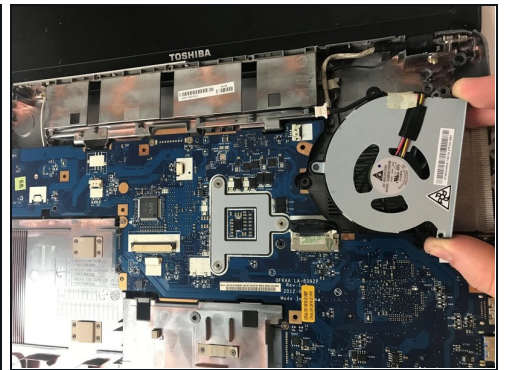
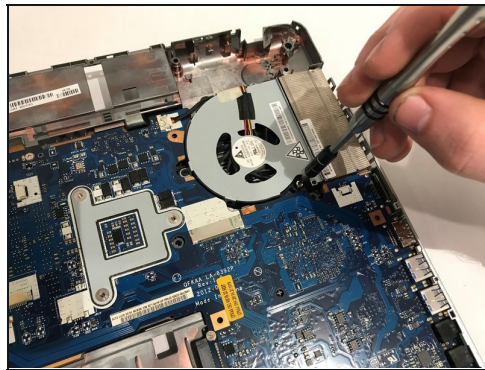
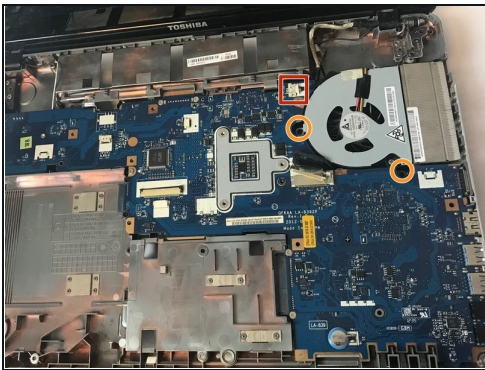


## Step 4



- Pry apart the casing with the plastic opening tool.
- Removing the cover under keyboard.

## Step 5



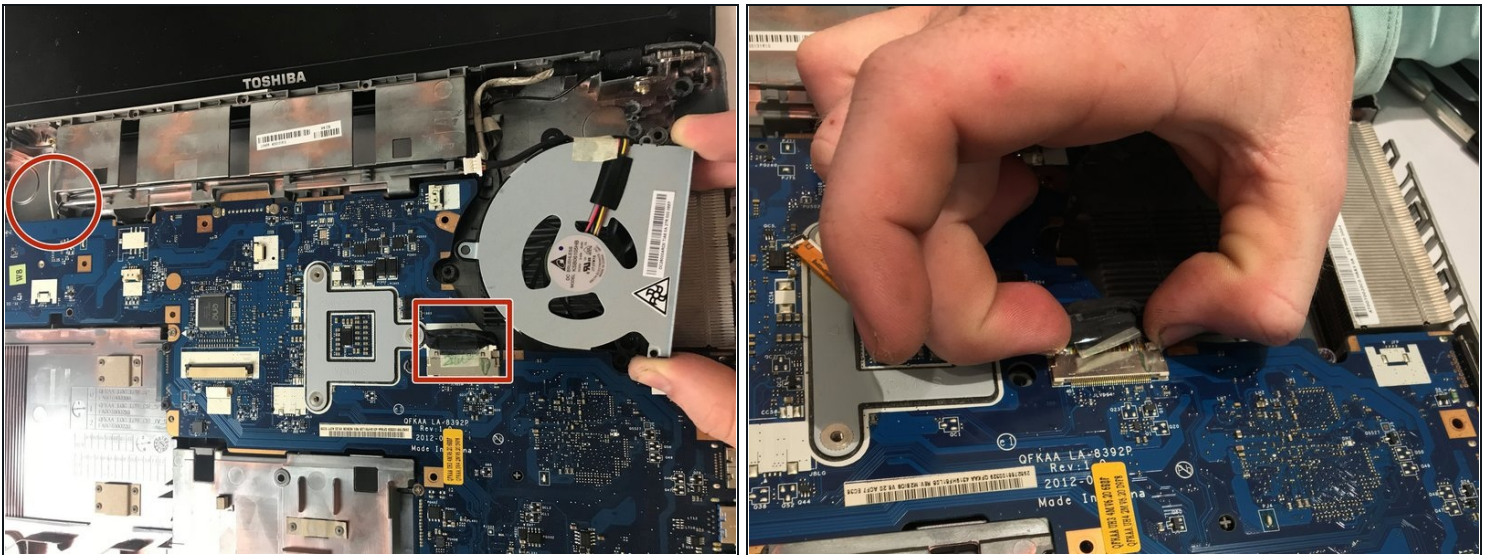
- Unplug the single no-fuss cable connector using the plastic opening tool pushing the edges towards the fan.
- Unscrew the two 1.5mm screws using a Philips #0 screwdriver by the head mounting holding down the fan.
- Pull the fan up and remove it from the device.

## Step 6 — Screen



- Turn laptop upside down with the spine facing towards you and locate the microchip.
- Remove the white and black sliding connector wires by prying upward with [tweezers](#) gently pulling the black and white wires upwards.

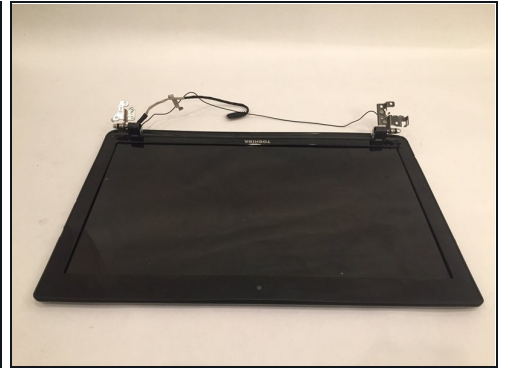
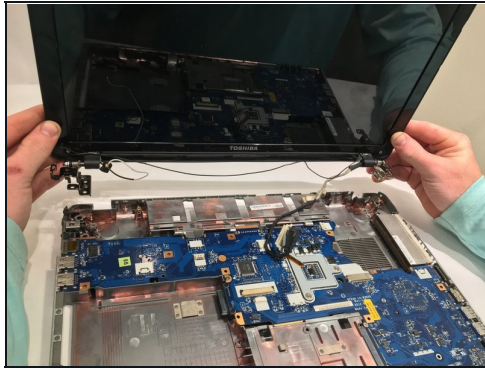
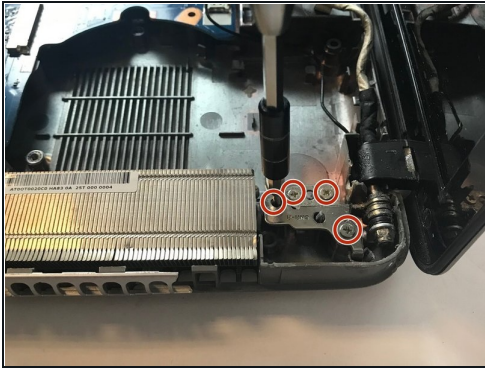
## Step 7



- Unplug the single ZIF connector ribbon by gently pulling up.
- Pull the white and black wires through from the underside of device.

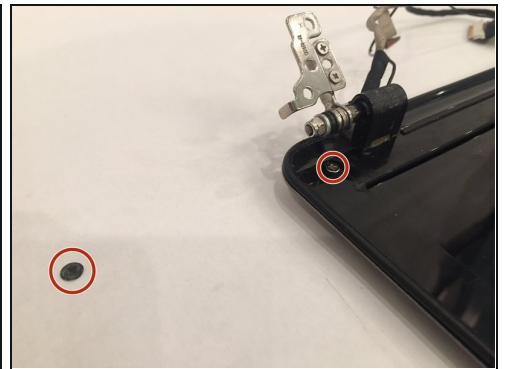
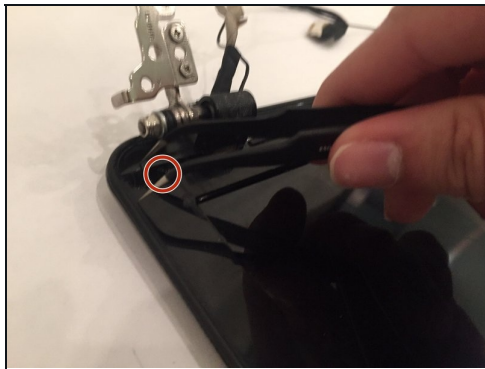
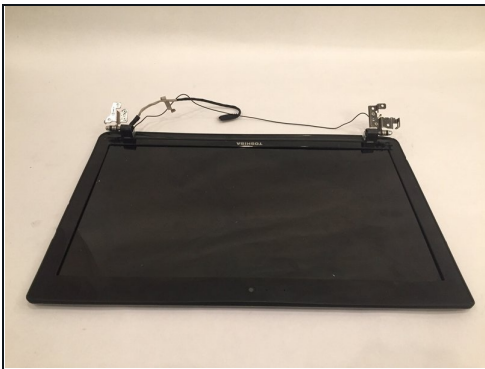


## Step 8



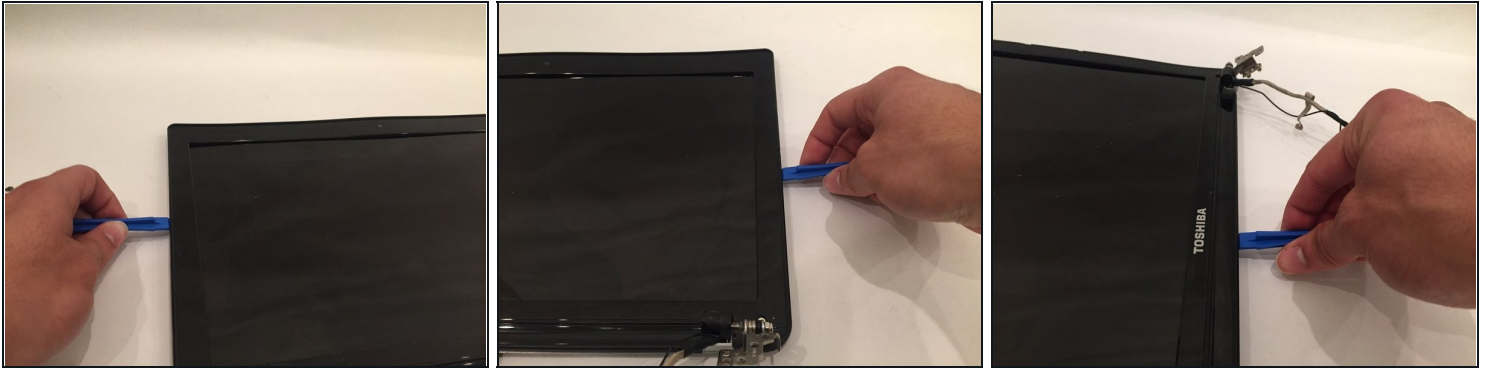
- Unscrew the four hinges mounting the 1.5mm screws on each side from casing using a Philips #0 screwdriver.
- Remove entire screen assembly from casing.

## Step 9



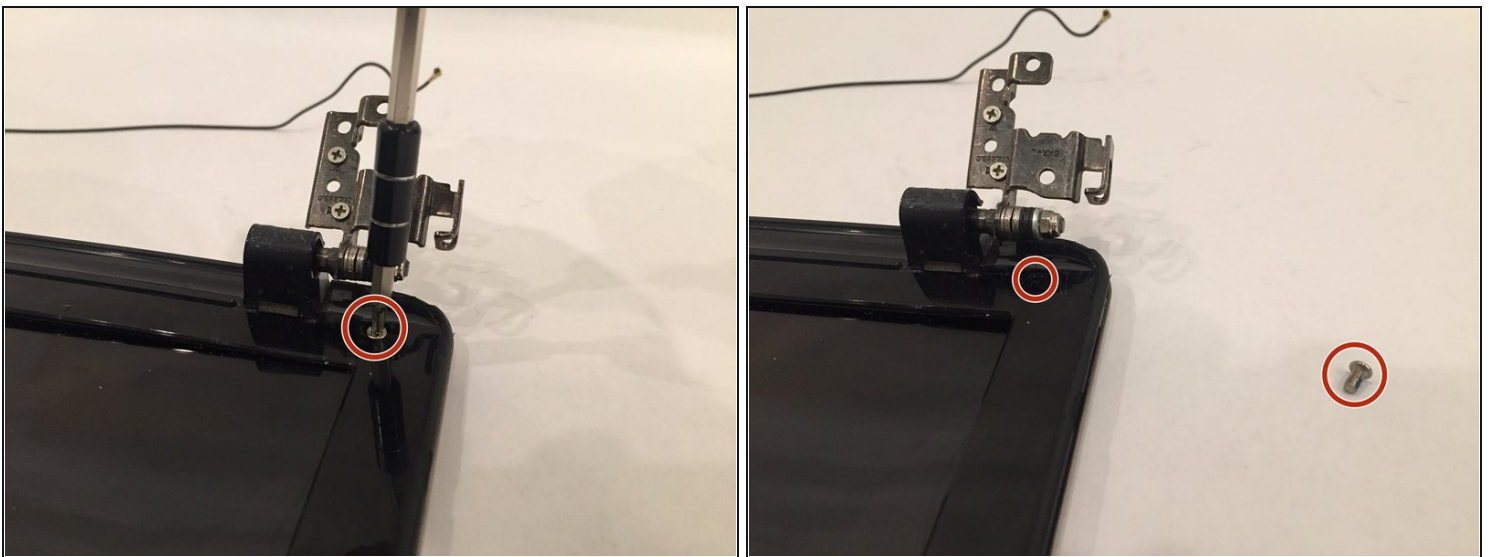
- Locate the two black sticker covers on the bottom of both sides of the monitor
- Using a pair of tweezers, carefully remove black stickers concealing two screws

## Step 10



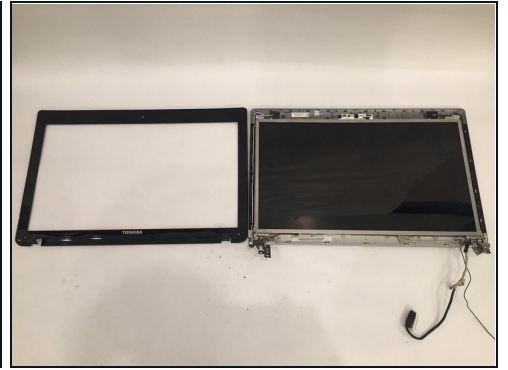
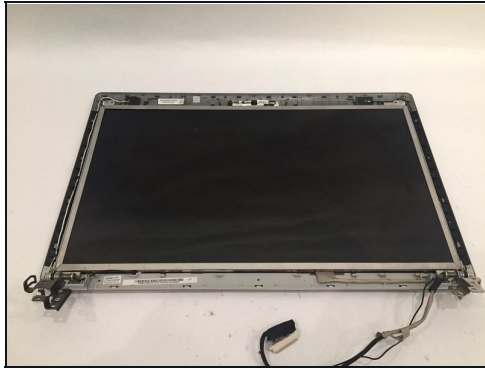
- Using a prying tool, carefully pry along the edges of the screen cover

## Step 11



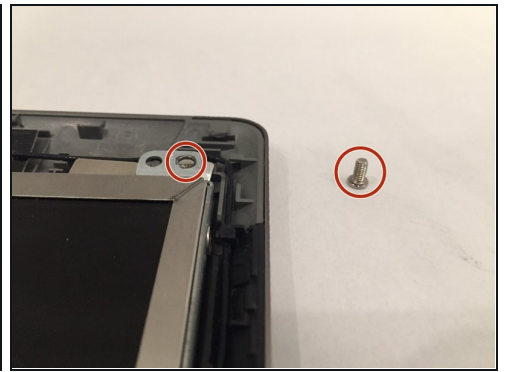
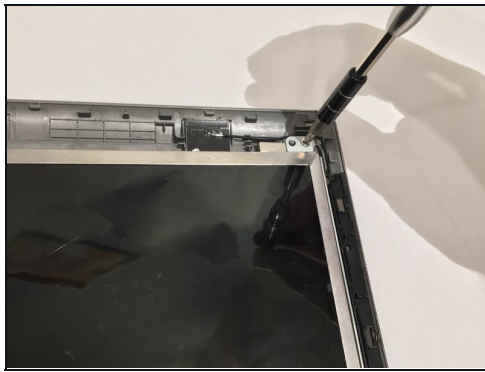
- Unscrew the two 1.5mm screws at the bottom of monitor using a Philips #0 screwdriver.

## Step 12



- With all the edges of the screen cover pried up, carefully remove the screen cover.

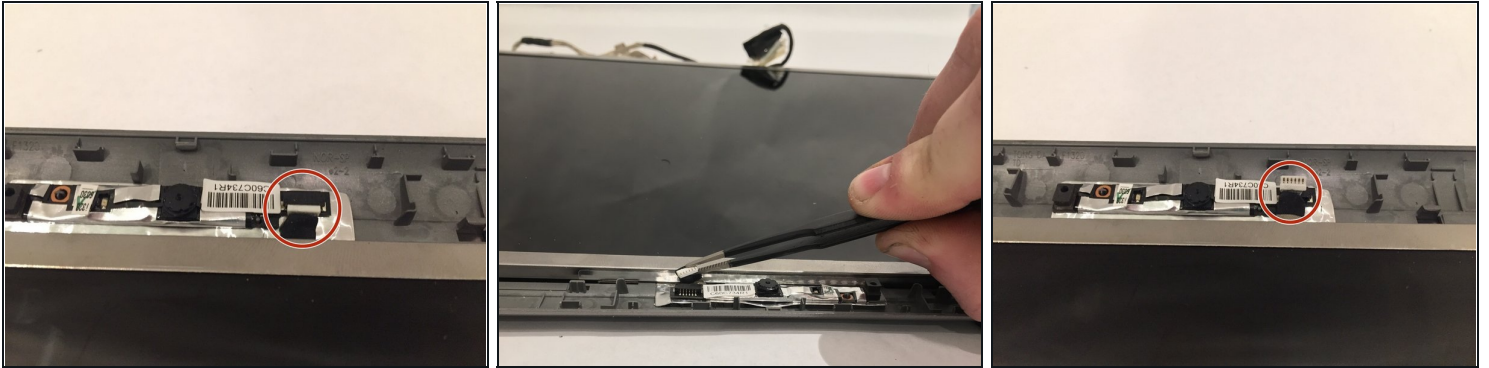
## Step 13



- Using the Philips #0 screwdriver, remove the four 1.5mm screws at the corners of the screen.



## Step 14



- At the top of the screen, using the tweezers, remove the ZIF ribbon connector by gently pushing it up.

## Step 15



- Remove the screen from the device.

⚠ Make sure to be careful because the screen is very fragile.

## Step 16 — Hinge



- Remove the three screws on the sides of the screen using the Philips #0 screwdriver.
- Once unscrewed, pull the frame off along with the hinge.

---

To reassemble your device, follow these instructions in reverse order.