



# Dell Inspiron 15-5548 Hard Drive Replacement

This guide will be helpful for those who want...

Written By: Waleed ALamri



# INTRODUCTION

This guide will be helpful for those who want to replace their hard drive.



## TOOLS:

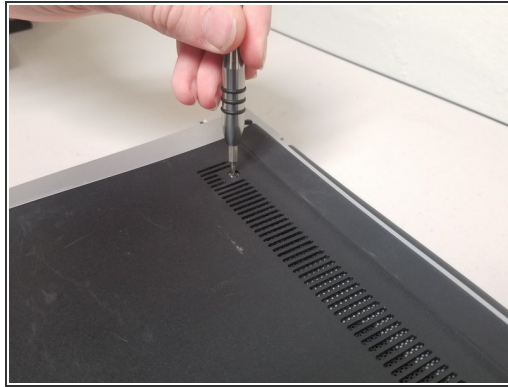
- [Phillips #00 Screwdriver](#) (1)



## PARTS:

- [1 TB SSD](#) (1)
- [250 GB SSD](#) (1)
- [Crucial MX500 500 GB SSD](#) (1)
- [2 TB SSD](#) (1)

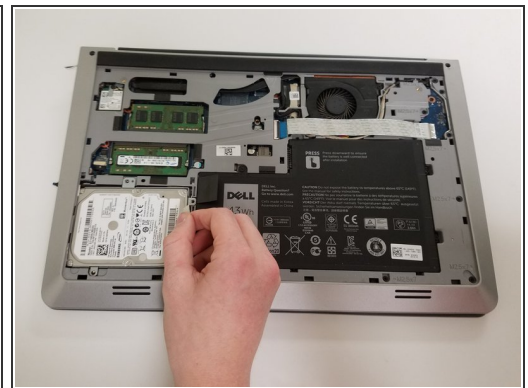
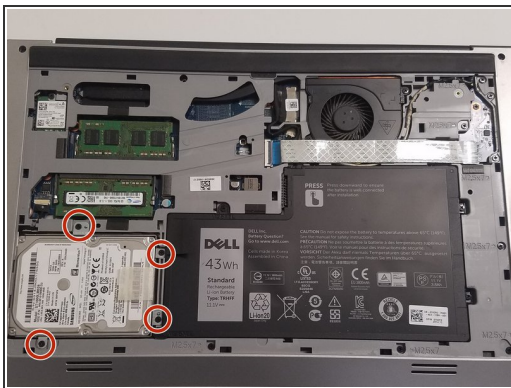
## Step 1 — Hard Drive



**⚠ Make sure the computer is unplugged and turned off before you start this procedure.**

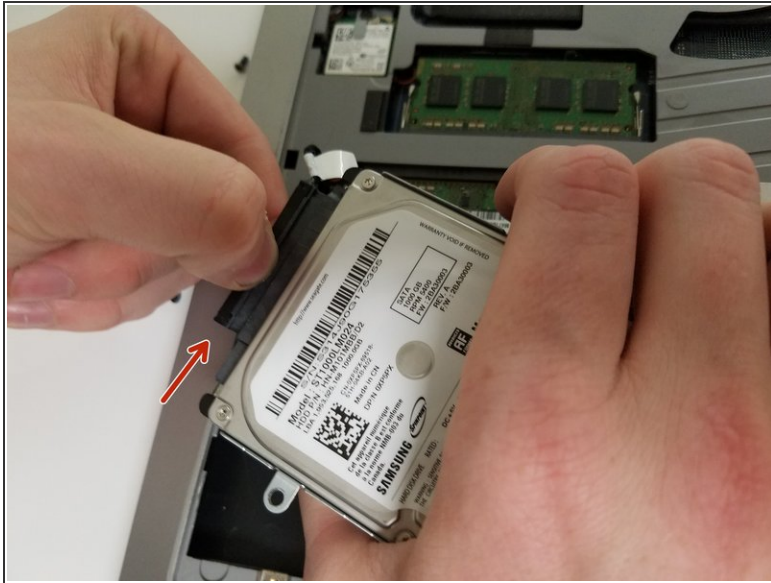
- Look on the bottom of the computer. Locate the 2 screws. (Picture 1)
- Using the Phillips 00 Screwdriver, unscrew both screws, and remove the bottom cover. The bottom cover can be hard to pull off, so you may need to pry it off with a pry tool.

## Step 2



- Remove the 4 - M2.5 x 5mm screws.
- Using the tab, lift the Hard Drive out of the laptop. (picture 3)

## Step 3



- After lifting the Hard Drive, unplug the Hard Drive connector.
- Now the hard drive is ready to be replaced.

To reassemble your device, follow these instructions in reverse order.