



Written By: Mario Gjyli

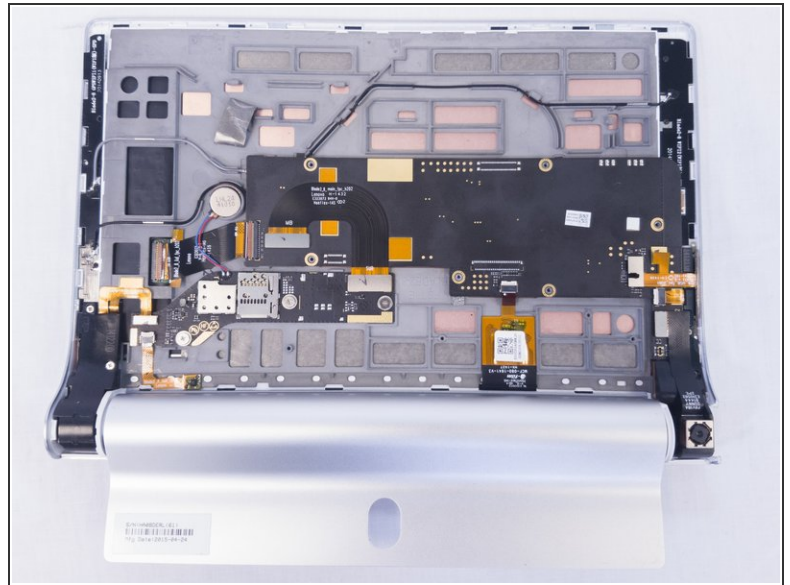




## TOOLS:

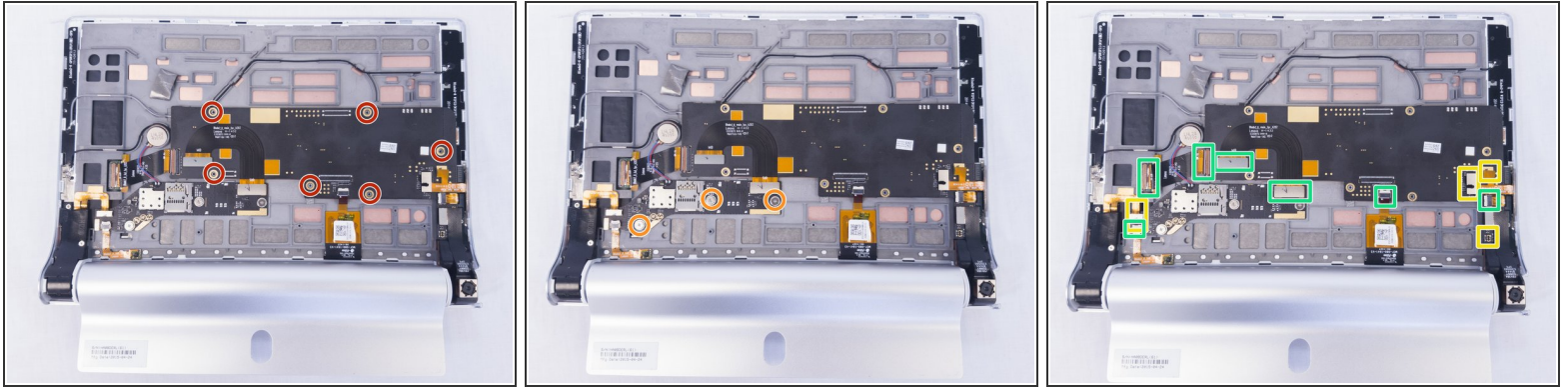
- [Type #00 Phillips head screwdriver](#) (1)
- [Spudger](#) (1)
- [iFixit Opening Tools](#) (1)

## Step 1 — Camera



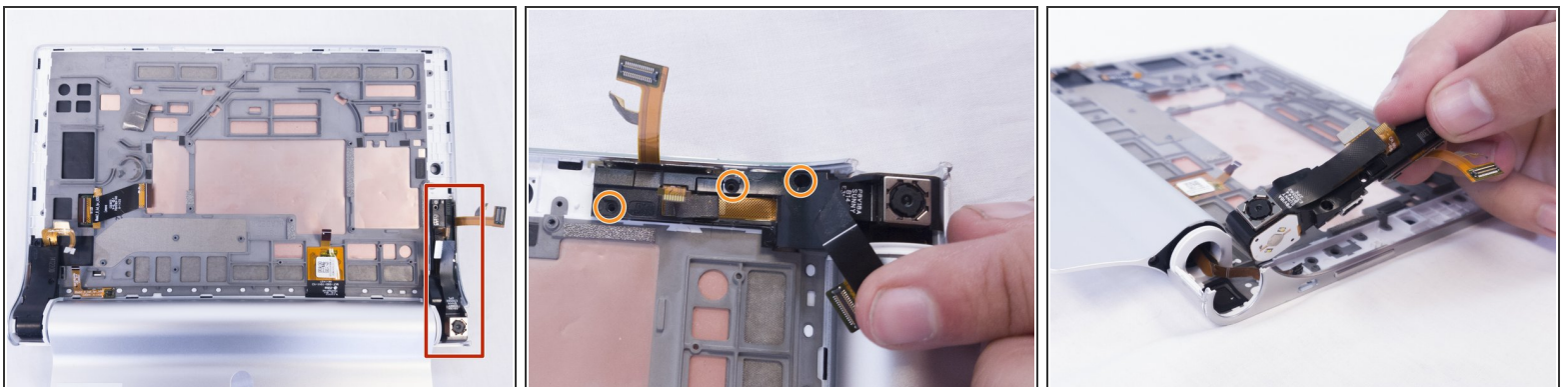
- Remove the three screws on the back of the device with the Phillips Screwdriver #00 bit.
- Using the blue opening tools or spudger, gently remove the back cover to expose the interior of the tablet.

## Step 2



- Using the Phillips Screwdriver #00 bit remove the 6 screws.
  - Using the Phillips Screwdriver #00 bit remove the 3 screws.
  - After removing all the screws, disconnect the ribbon cables.
  - Disconnect the ZIF connectors.
- ⚠ Some of the ribbon cables are secured with clips, simply pry up the clips before sliding them out of the pin connectors.

## Step 3



- After removing the motherboard and antennas the camera module is located on the right as marked in red.
  - Remove the three 2mm screws holding the module in place with the Phillips Screwdriver #00 bit.
- ⚠ The camera module is also held in place with adhesive so gently remove.

To reassemble your device, follow these instructions in reverse order.