



Dell Inspiron 15-5548 Wi-Fi Chip Replacement

This guide will show you how to replace the Wi-Fi Chip in the Dell Inspiron 15-5548.

Written By: Alex Ferguson



INTRODUCTION

This is a guide to show you how to replace the Dell Inspiron 15-5548 Wi-Fi chip. Make sure that the laptop is unplugged and powered off before beginning this procedure.





TOOLS:

- [Phillips #00 Screwdriver](#) (1)
-

Step 1 — Wi-Fi Chip



 Make sure the computer is unplugged and turned off before you start this procedure.

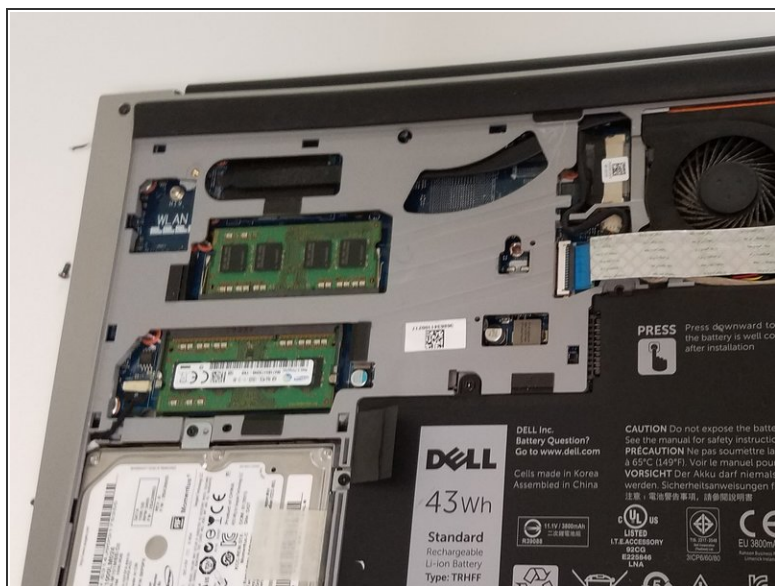
- Use a Phillips #00 screwdriver to unscrew both bottom cover screws, and remove the bottom cover.
-  The bottom cover can be hard to pull off, so you may need to pry it off with a pry tool.

Step 2



- Locate the Wi-Fi chip in the upper left corner of the laptop.
- Remove the screw at the top of the chip.

Step 3



- The chip should pop up once the screw is gone.
- Now remove the chip and insert the new one.

To reassemble your device, follow these instructions in reverse order. When inserting new chip make sure it pops up when not secured by the screw.