



Acer Aspire V5-591G-75KE Wireless Card Replacement

Follow this guide in order to identify, remove, and potentially replace the wireless card for the Acer Aspire V5-591G-75KE.

Written By: Tasier Hagler



INTRODUCTION

The Acer Aspire V5-591G-75KE is manufactured with a Qualcomm Atheros NFA344A wireless card.



TOOLS:

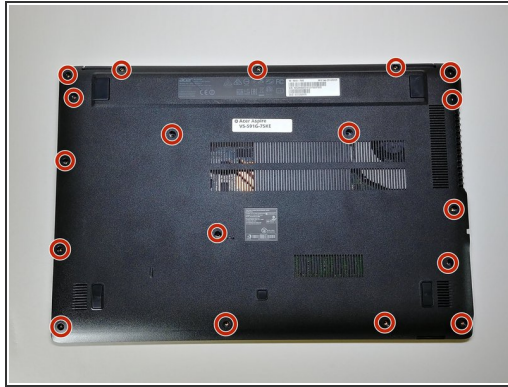
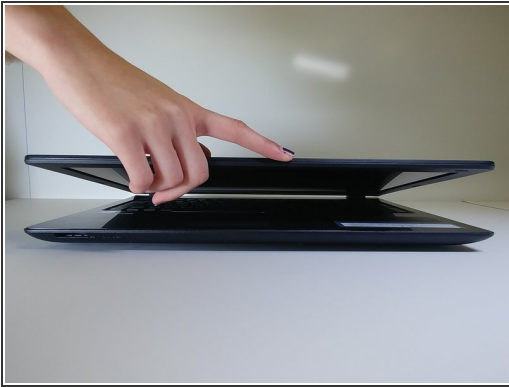
- [Phillips #1 Screwdriver](#) (1)
- [Spudger](#) (1)
- [ESD Safe Tweezers Blunt Nose](#) (1)



PARTS:

- [Atheros Qualcomm Wireless AC Wi-Fi QCNFA344A NFA344A](#) (1)

Step 1 — Acer Aspire V5-591G-75KE Disassembly




- Close down the display and flip the device upside down.
- Use a **Phillips #1 screwdriver** to remove 18 black **10mm Phillips Head screws** in order to loosen up the protective bottom casing.

Step 2

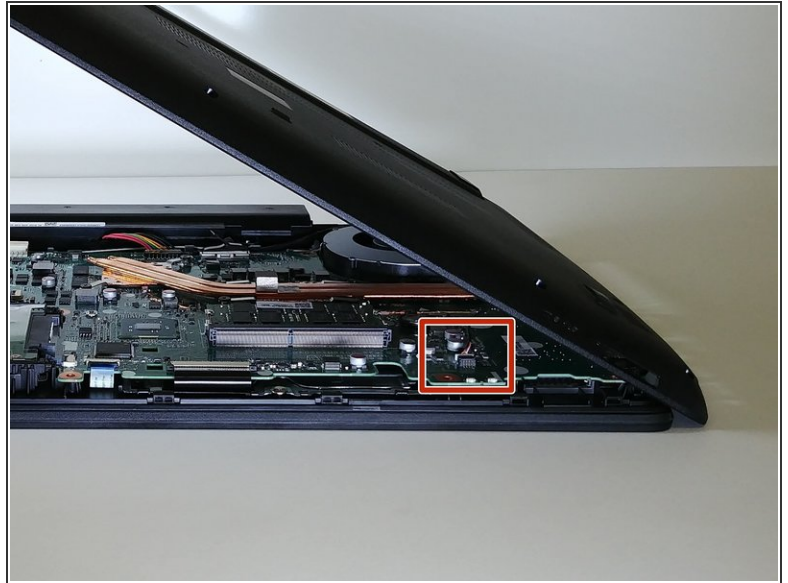


- With the screws removed, flip the device right-side up and open up the display.
- Run a **plastic spudger** tool along the seam of the face-plate in order to loosen up the protective bottom casing.


 *Popping sounds are normal, but forceful prying can damage delicate components. Be especially careful near the USB and HDMI ports.*

This document was generated on 2020-11-28 06:13:25 AM (MST).

Step 3

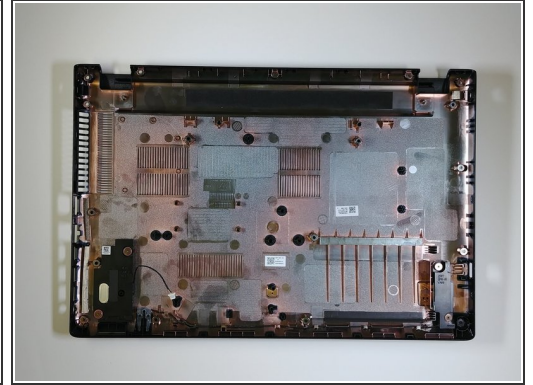
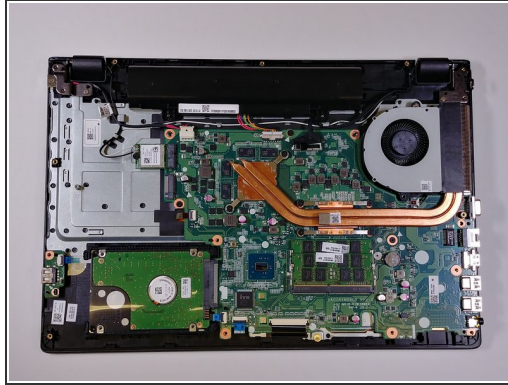
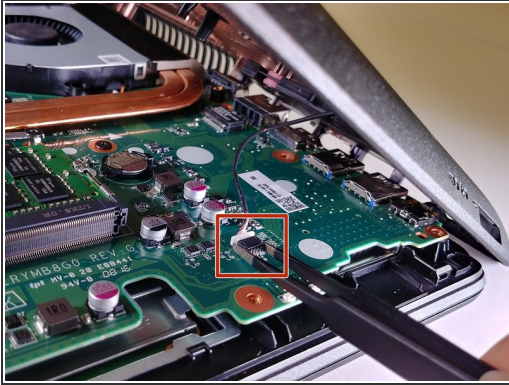


- Close the display down once more, and flip the laptop upside down, with the hinge facing away from you.

 *Do not yank the bottom casing off. There is a small speaker wire that connects it to the motherboard.*

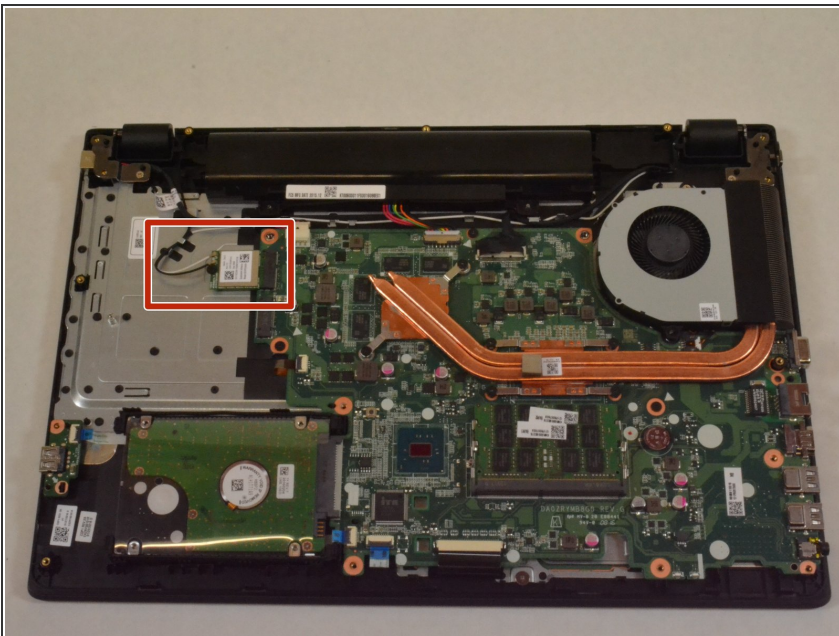
- Taking note of the small speaker wire, gently **lift only the left side** of the bottom casing.

Step 4



- Using a pair of **blunt tweezers**, push on the tabs of the small white connector to separate it from the motherboard.
- ⓘ *The entire bottom casing should lift with no resistance. If there is too much resistance, verify you removed all the screws, and run the plastic spudger tool around the face-plate again.*

Step 5 — Wireless Card



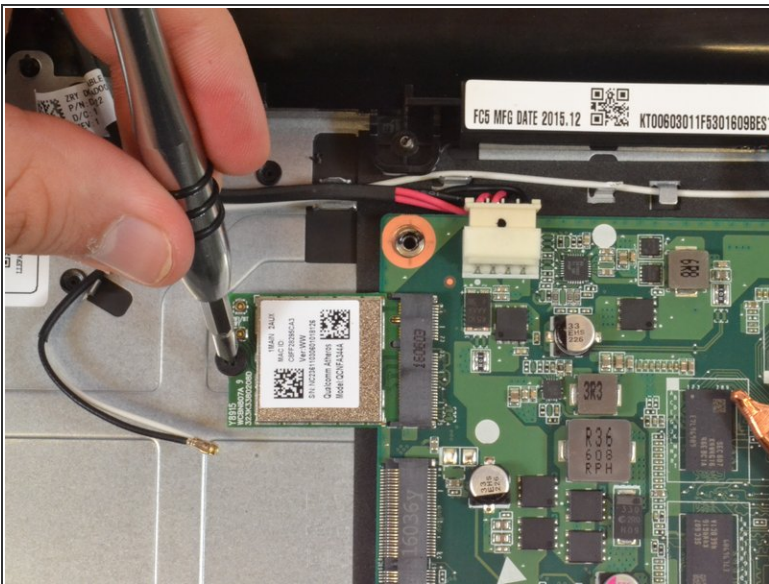
- Locate the wireless card on the top left quadrant. It should have two antenna cables connected to it, one white and one black.

Step 6



- With a pair of blunt tweezers, firmly grasp each antenna head and detach it by lifting straight up.
- ⓘ The antenna cables are connected through small sockets. Small popping sounds when attaching and detaching the antennas are normal.
- ⓘ Note that the white cable connects on the top socket.

Step 7



- Using a Phillip Head size 1 screwdriver, remove the screw attaching the wireless card to the laptop frame.
- To detach the wireless card, lift up slightly and pull away.

To reassemble your device, follow these instructions in reverse order.