



Carrera Mario Copter Controller Circuit Board Replacement

A damaged circuit board, or components of it may help any response issues.

Written By: Edgar Lopez-Allende



INTRODUCTION

The controller might stopped working due a malfunction error on the circuit board that you might want to consider replacing. This guide requires soldering. For more information on how to solder and desolder connections, please visit [this guide](#).



TOOLS:

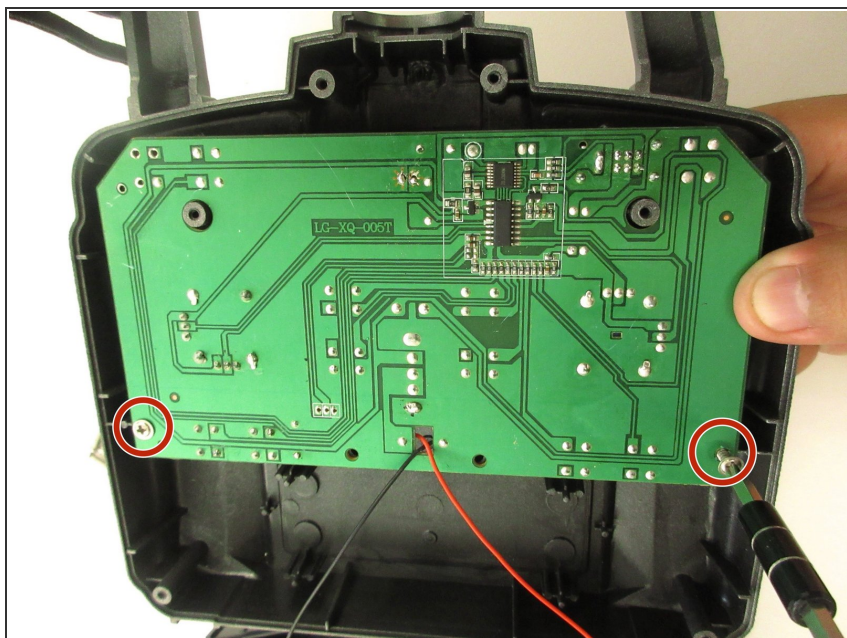
- [JIS #1](#) (1)
-

Step 1 — Controller Circuit Board



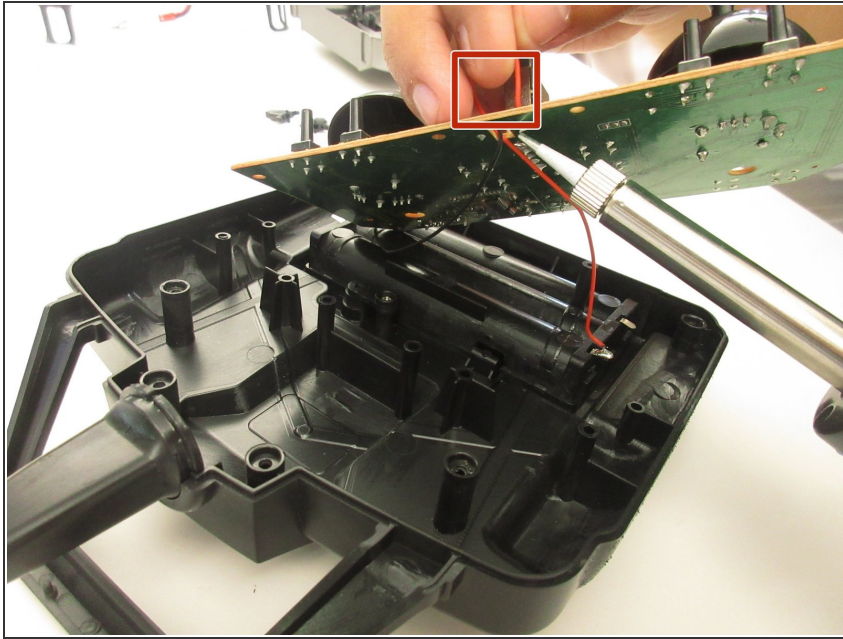
- Flip the controller over so the underside would face up
- Remove four of 7.1mm screws with a JIS #1 screwdriver
- Remove two 4.0mm screws located on the handle with the JIS #1 screwdriver.
- Remove two 7.1 mm screws on the small area that stick out from the surface with the JIS #1 screwdriver
- ⓘ Use an extension with the JIS #1 screwdriver in order to get to the screws with yellow marks because they locate deep inside the holes.

Step 2



- Remove the black case to access the circuit board.
- Remove two 4.8mm screws on the circuit board with the JIS #1 screwdriver.

Step 3



- Gently lift up the circuit board from the black case.
- Use a soldering iron to melt the red wire while at the same time pulling it from the motherboard.
- ❗ For more information on how to solder and desolder connections, please visit [this guide](#).
- Repeat the previous procedure with the black wire.
- Gently remove the circuit board away from the case.

To reassemble your device, follow these instructions in reverse order.