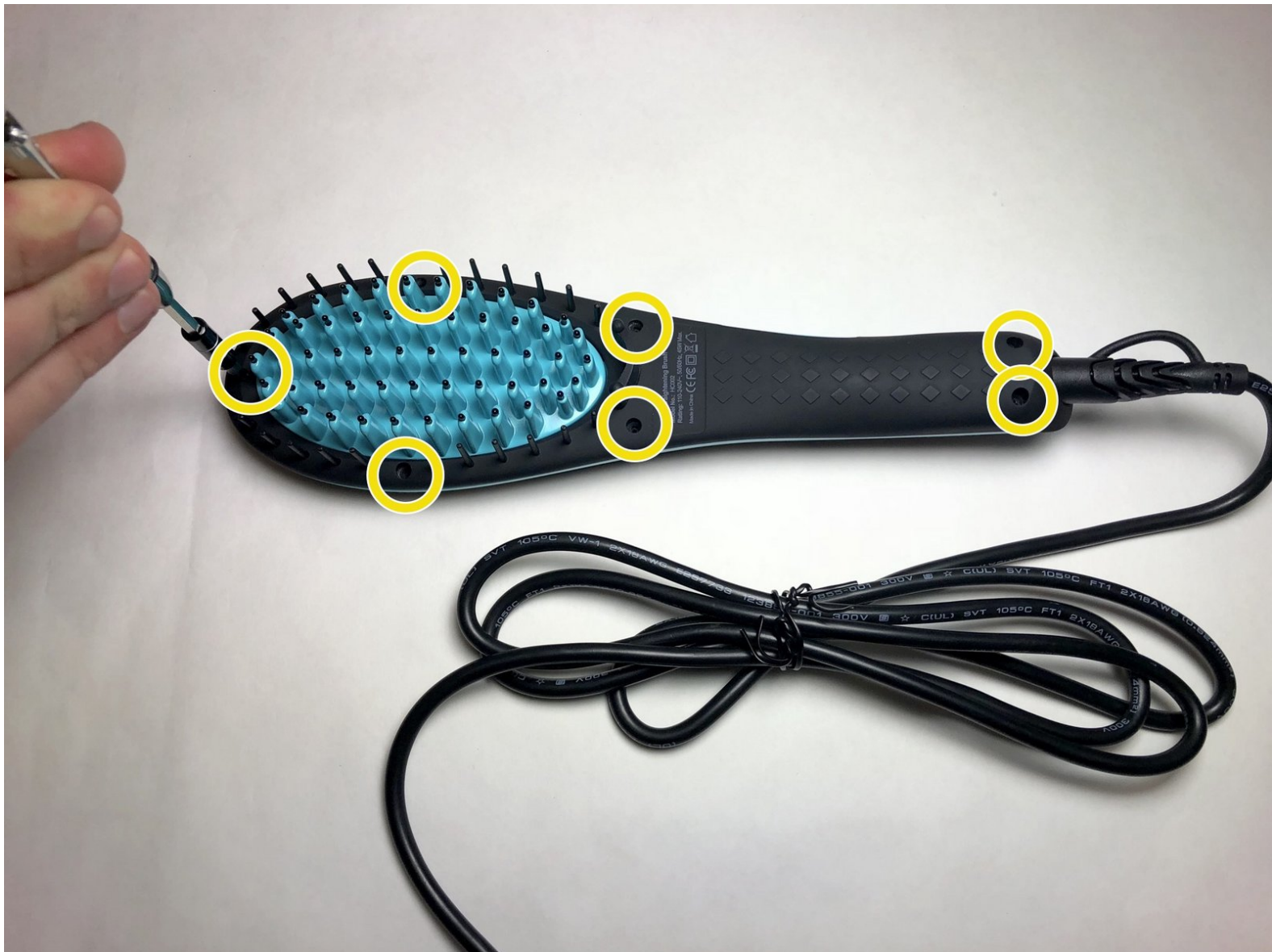




Apalus Digital Hair Straightening Brush LCD Screen Replacement

This guide will show you how to replace an LCD screen in an Apalus Digital Hair Straightening Brush.

Written By: Malak



INTRODUCTION

If you are experiencing issues with the LCD screen on top of the brush, this guide will walk you through on how to take apart the brush in order to replace the screen. Soldering is involved, so if you don't know how to solder take a look at [How To Solder and Desolder Connections](#).



TOOLS:

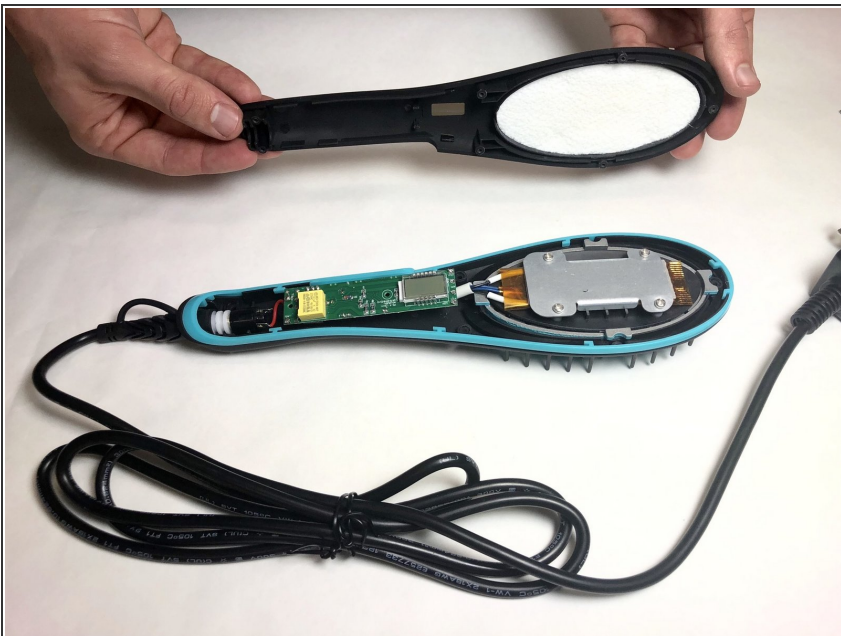
- [Soldering Iron](#) (1)
 - [Solder](#) (1)
 - [Phillips #1 Screwdriver](#) (1)
-

Step 1 — LCD Screen



- Remove the seven 5mm Phillips #1 screws on the comb-side of the brush.

Step 2



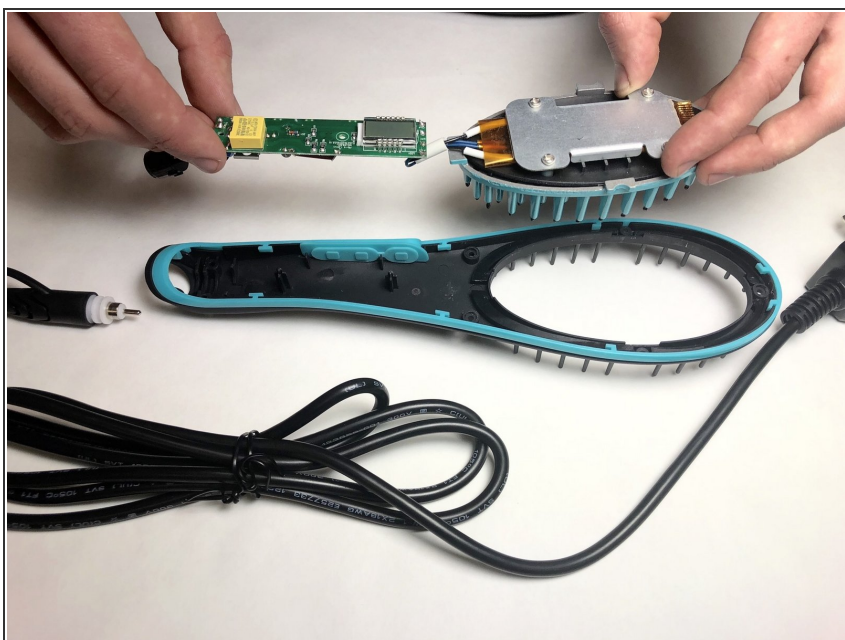
- Now that the screws are taken out, remove the backside of the comb.

Step 3



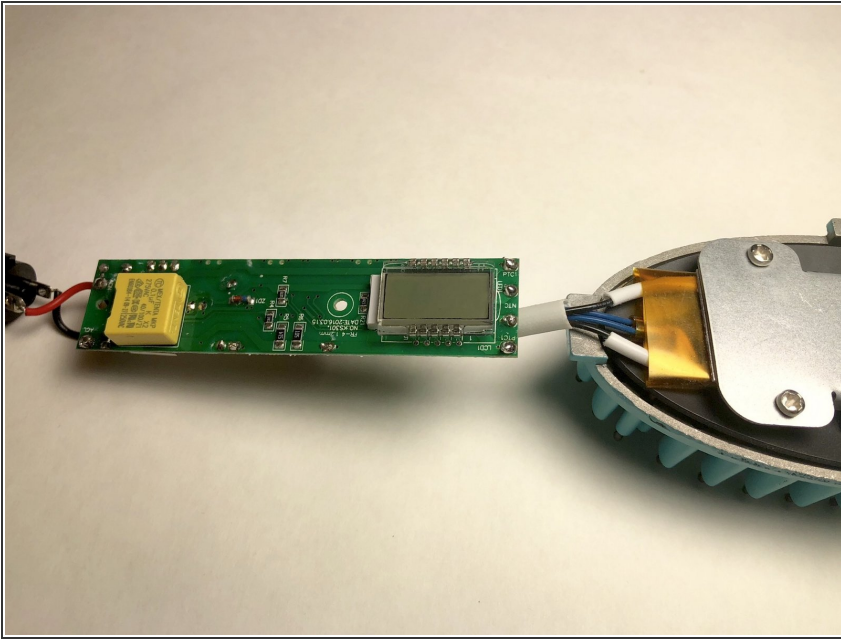
- Unplug the power cord from the insert inside of the brush.
- ⚠ Be careful not to tug on the wires. Hold the insert when removing the power cord.

Step 4



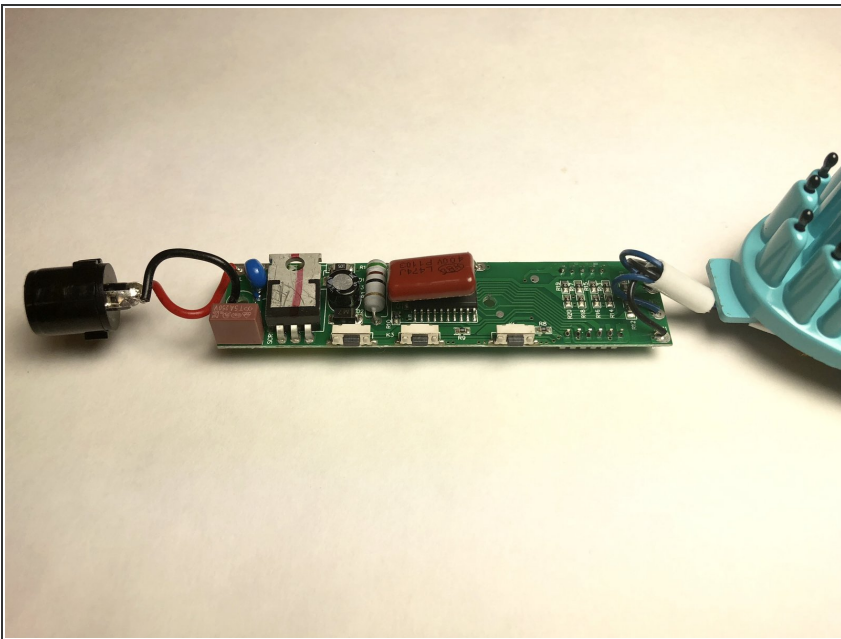
- Remove the circuit board and heating element from the handle.
- This will make it easier to work on for later steps.

Step 5



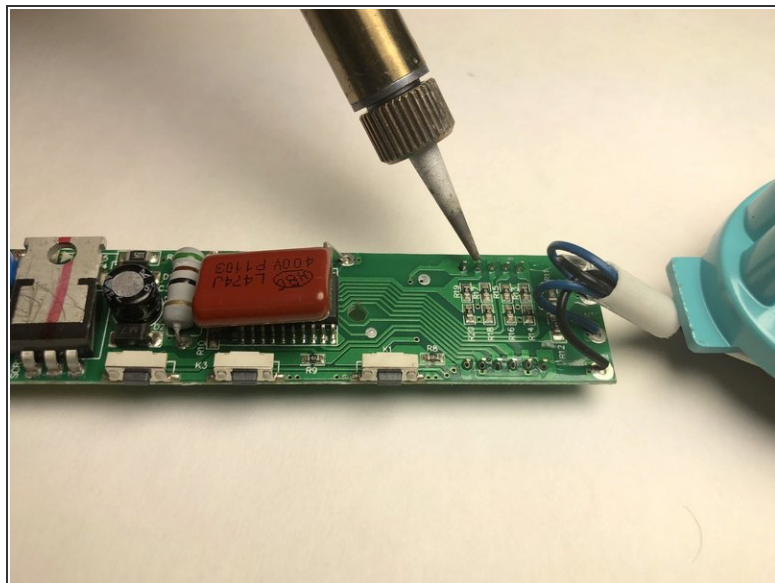
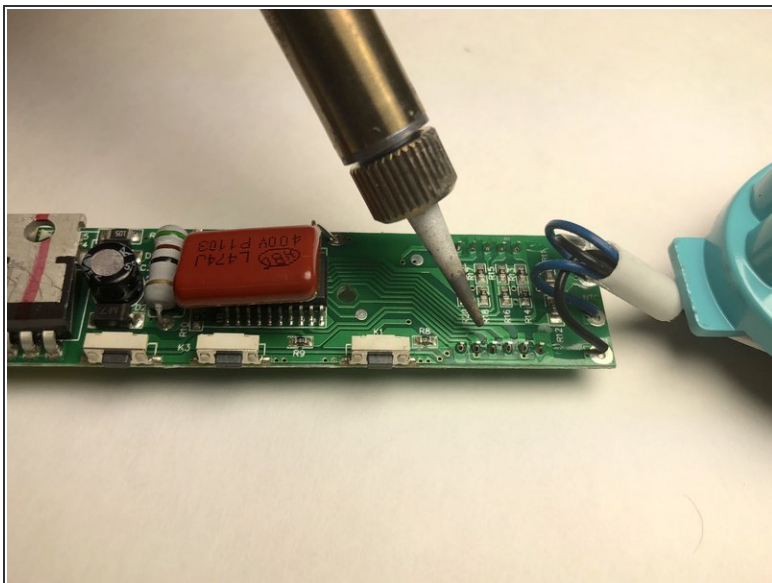
- Locate the LED screen on the top side of the circuit board

Step 6



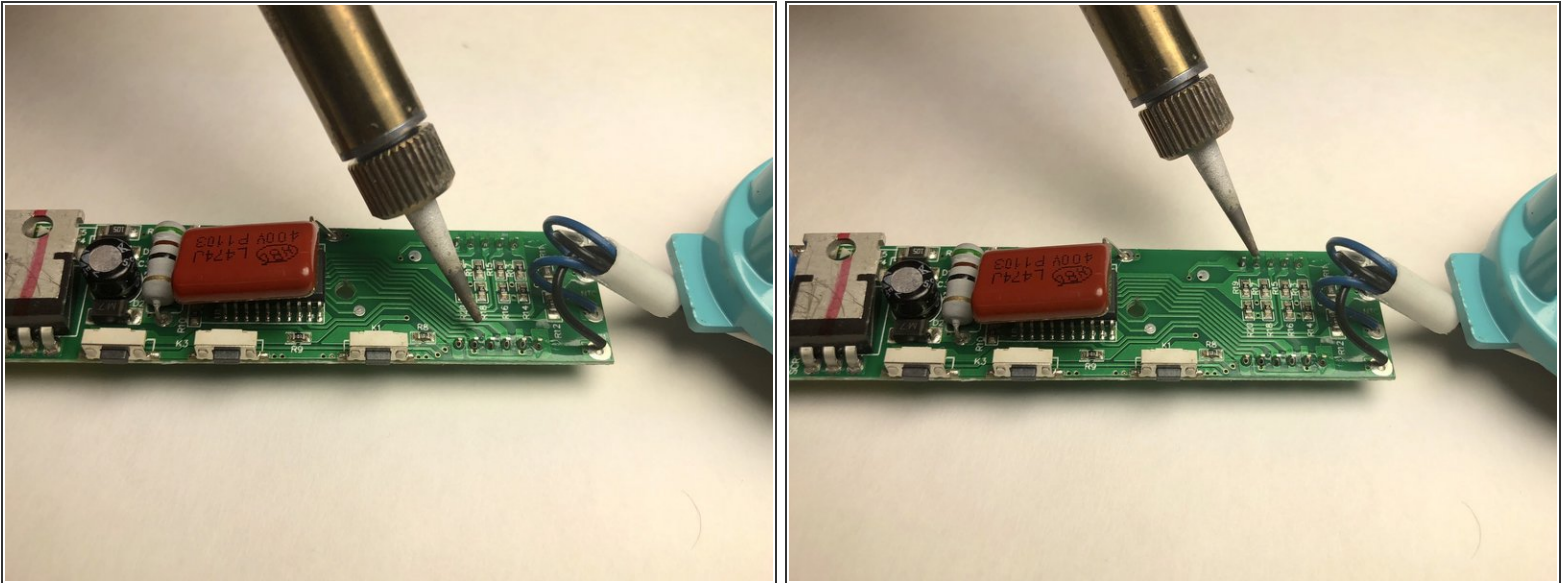
- Flip the circuit board to start soldering.

Step 7



- Using the soldering tool, melt the solder holding the LCD screen on the circuit board.
- The screen is soldered in 11 places on the circuit board. Melt each of these points and remove the screen.
- [Soldering Technique Guide](#)

Step 8



- Now that the LCD screen is removed, use a soldering tool and solder to install the new screen on the circuit board.
- Solder at the same 11 points where you previously melted to remove the screen.

To reassemble your device, follow these instructions in reverse order.