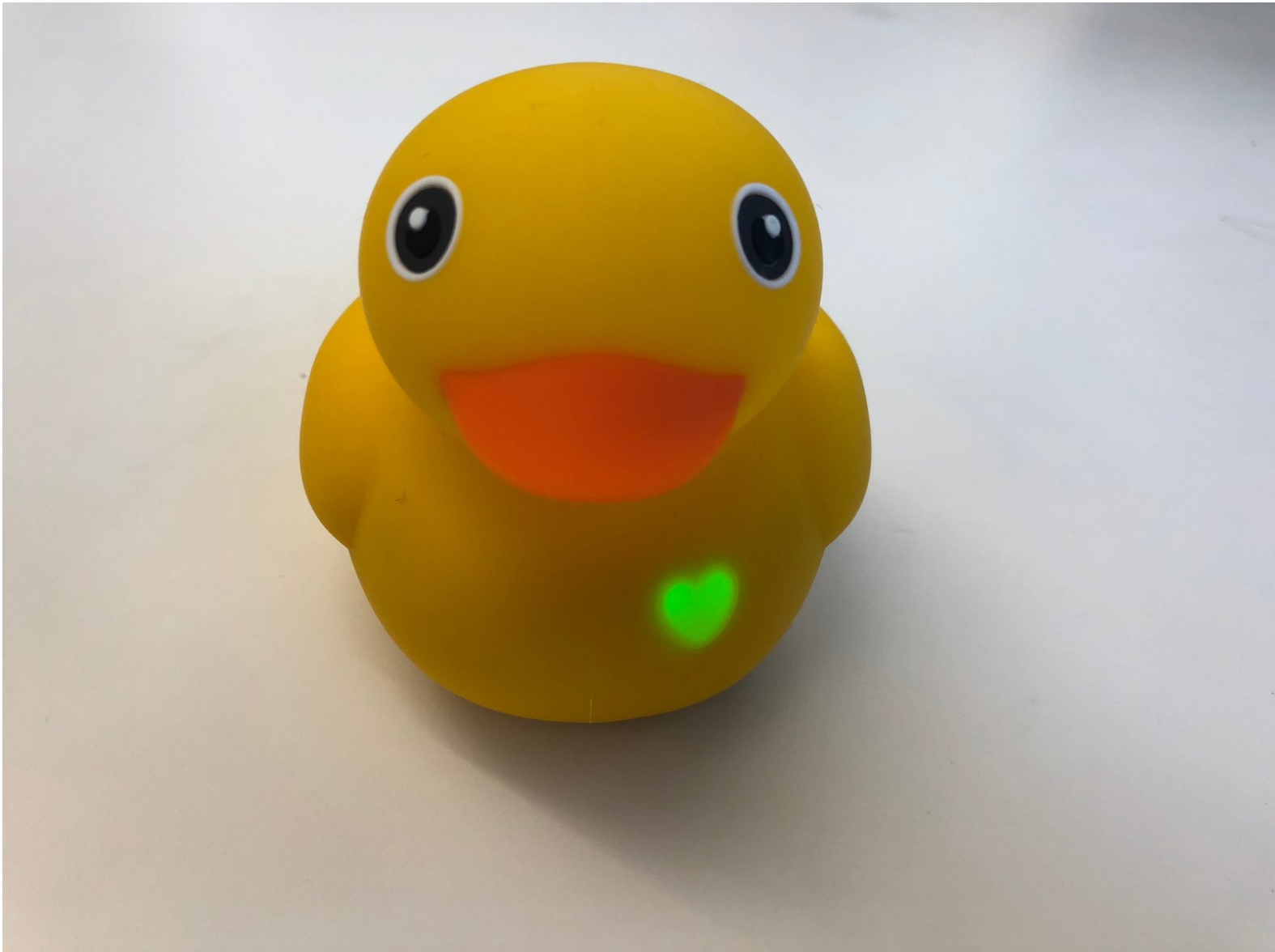




# Edwin the Duck Rubber Heart Power Button Replacement

This guide will help you replace the rubber heart, which is the on and off button to Edwin.

Written By: Michelle Montano



---

## INTRODUCTION

Edwin the Duck is an interactive learning toy. If Edwin is still charging but not turning on, this guide will help you step by step, on how to replace the power button.

---



### TOOLS:

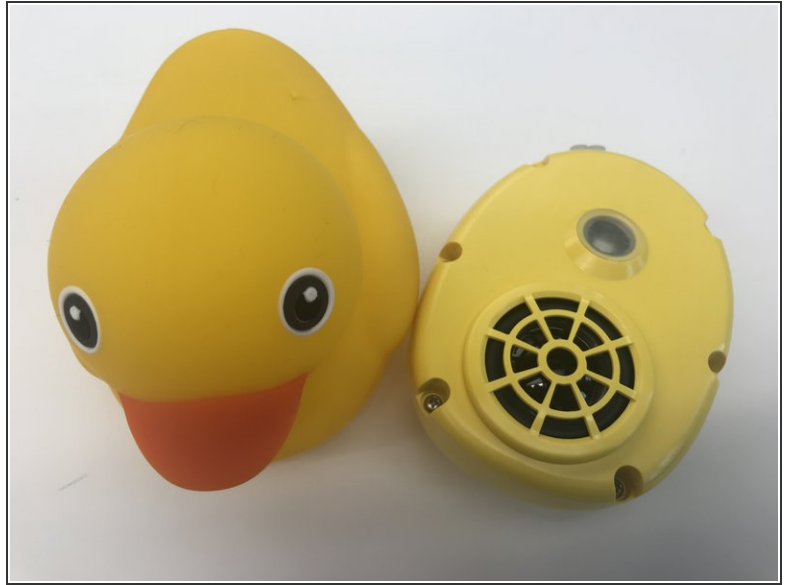
- [iFixit Opening Tools](#) (1)
  - [T8 Torx Screwdriver](#) (1)
  - [J1 Screwdriver Bit](#) (1)
-

## Step 1 — Rubber Heart Power Button



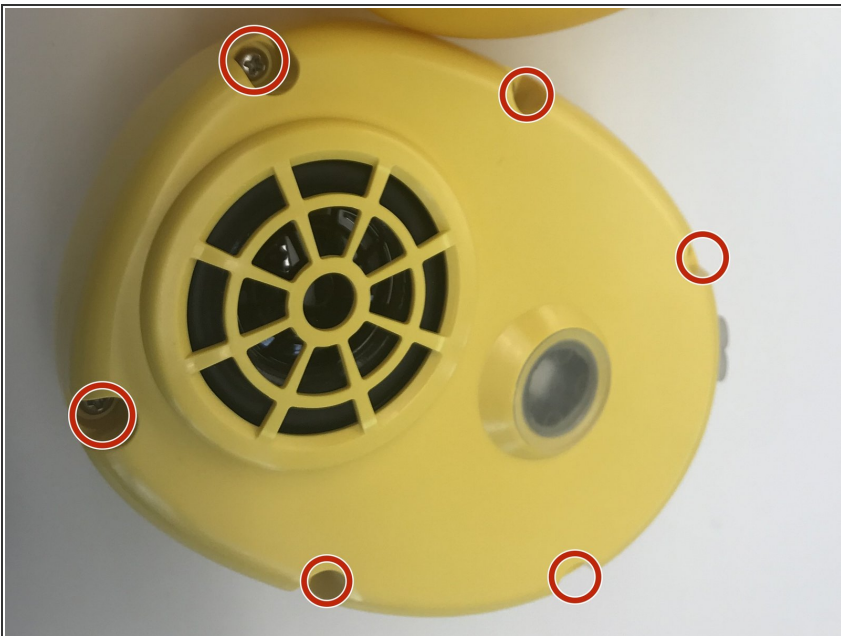
- Unscrew the four 9mm screws with a T8 bit
- Remove the back plate off

## Step 2



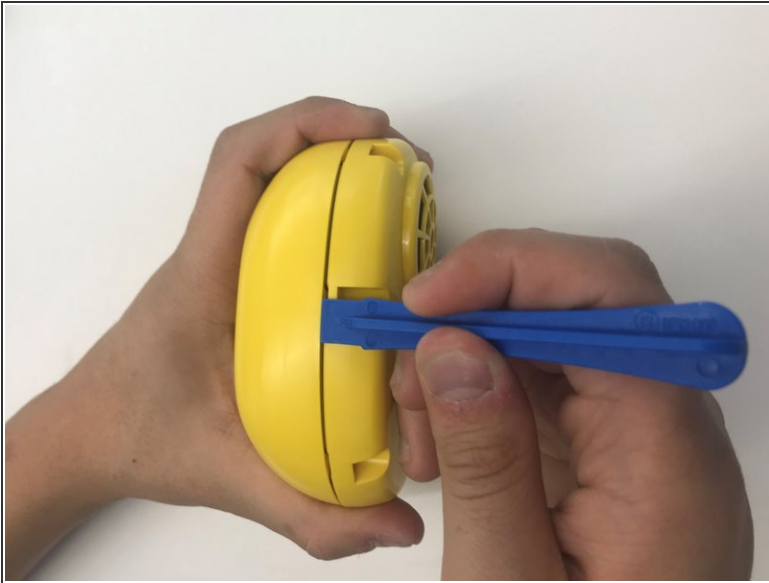
- Carefully take off the rubber skin.
- ⓘ It's important to remember to be patient and not rush. You don't want to rip or damage the rubber skin in then resulting in not having a waterproof cover.

## Step 3



- Using the J1 bit, unscrew all six 9 mm screws that run along the border.

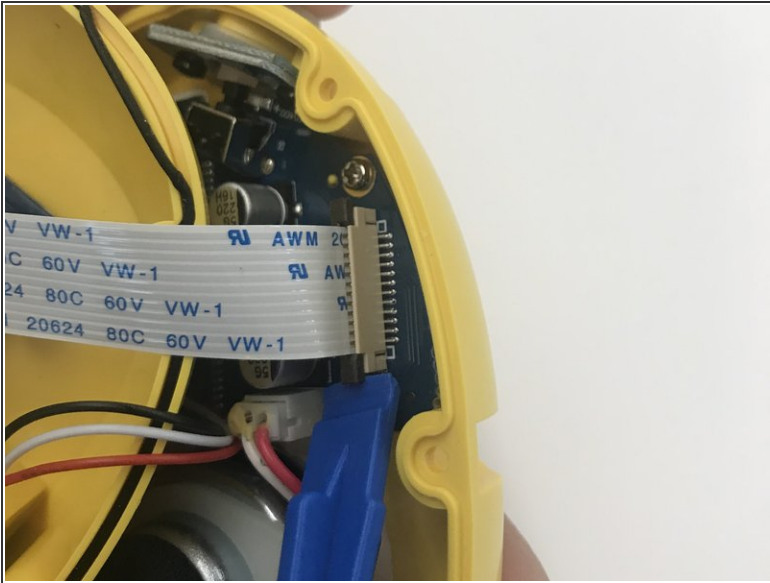
## Step 4



- Use the plastic opening tool to open the inside of the duck.
- ⚠ Be **very careful** when splitting the two halves apart. There are wires connecting to both sides. **Remember to open slowly.**

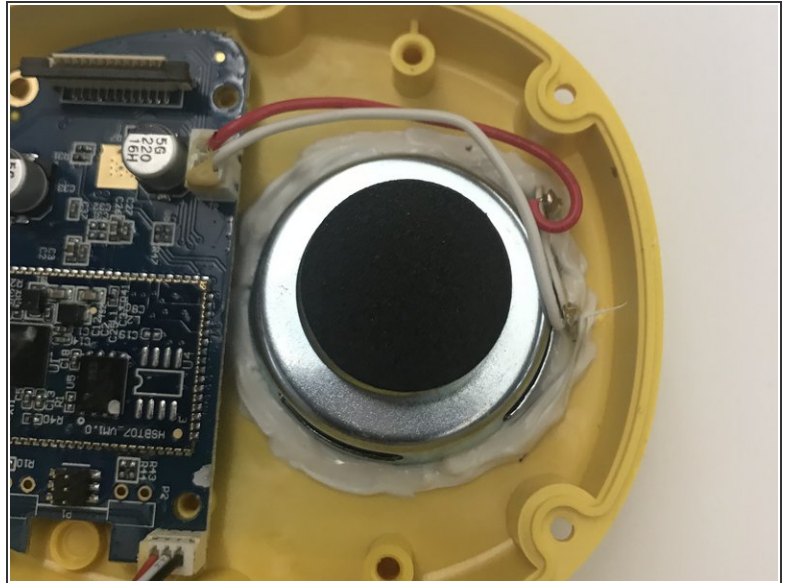


## Step 5



- Using the plastic opening tool pull up the black tab up until it stops.
- ⚠ Be careful not to pull up the black tab too far up, otherwise the cable won't be secure anymore.
- Pull up the white cable tab up **slowly**

## Step 6



- Use the J1 bit to unscrew all four 9 mm screws connected to the motherboard.
- Use the J1 bit to unscrew both 9 mm screws attached to the white plastic plate

## Step 7



- Lift up the motherboard and speaker and place it away and to the side like you see in the picture

## Step 8



- Unscrew the two black 9 mm screws by using the J1 bit.
- Remove the damaged rubber heart button and replace with a new rubber heart button.

To reassemble your device, follow these instructions in reverse order.