



Oral-B Black 7000 Induction Coil Replacement

This guide describes how to replace the induction charging coil of the Oral-B Black 7000 toothbrush.

Written By: Rachel Surridge



INTRODUCTION

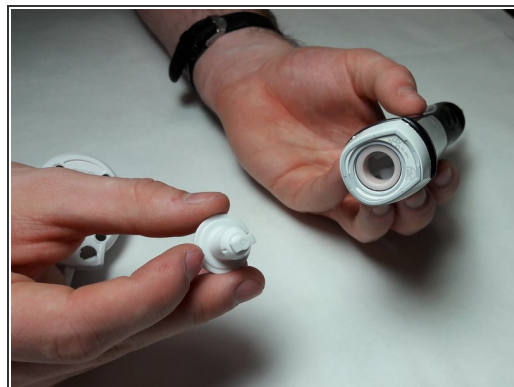
The induction charging coil allows the device to receive power from the supplied charging base. It will need to be replaced if it is damaged by use or by external conditions. This guide describes how to replace the induction charging coil. Some steps in this procedure require desoldering connections. For a review of soldering techniques, check out this [How to Solder Guide](#).



TOOLS:

- [Metal Spudger](#) (1)
 - [Tweezers](#) (1)
 - [Soldering Workstation](#) (1)
-

Step 1 — Induction Charging Coil



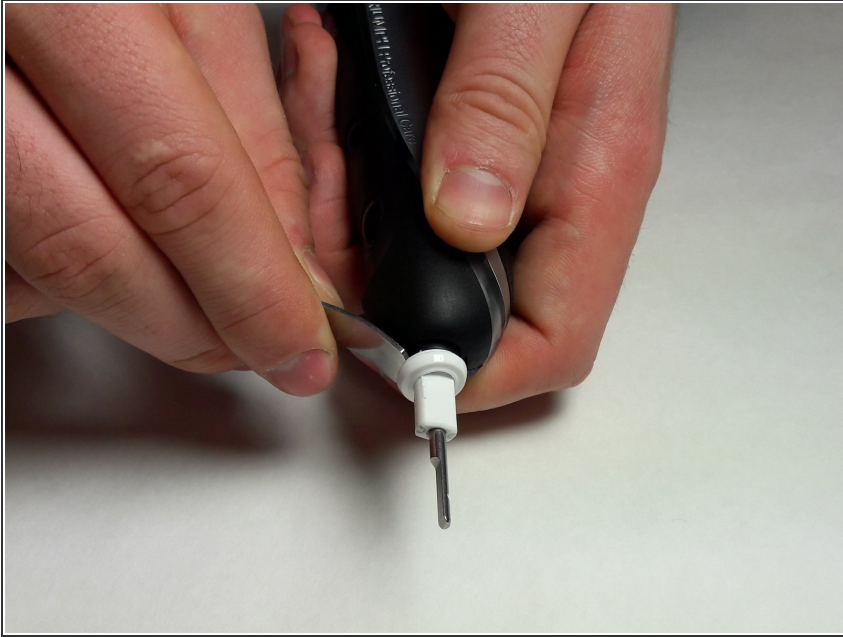
- Use the charging station to remove the a small plastic plug from the end of the toothbrush by inserting the charging station into the end insert and twisting counter-clockwise by 90 degrees.

Step 2



- Remove the end cap from the bottom of the toothbrush by prying it off with a spudger.

Step 3



- Remove the top cap by using a spudger to pry the plastic ring off of the toothbrush frame.

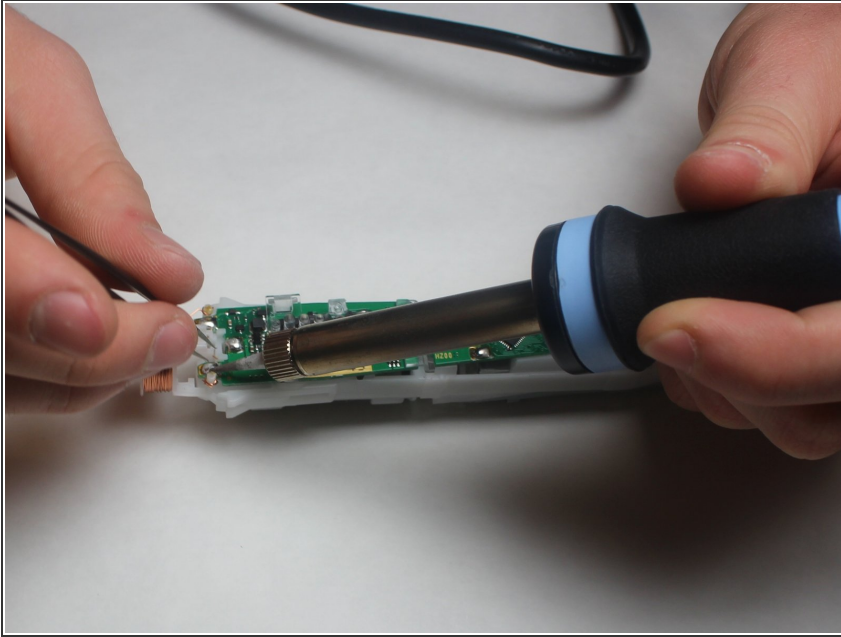
Step 4



- Use a spudger to loosen the two plastic tabs next to the induction coil that secure the internal assembly to the frame.
- Push on the rotating head in order to pop the assembly out of the black plastic casing.

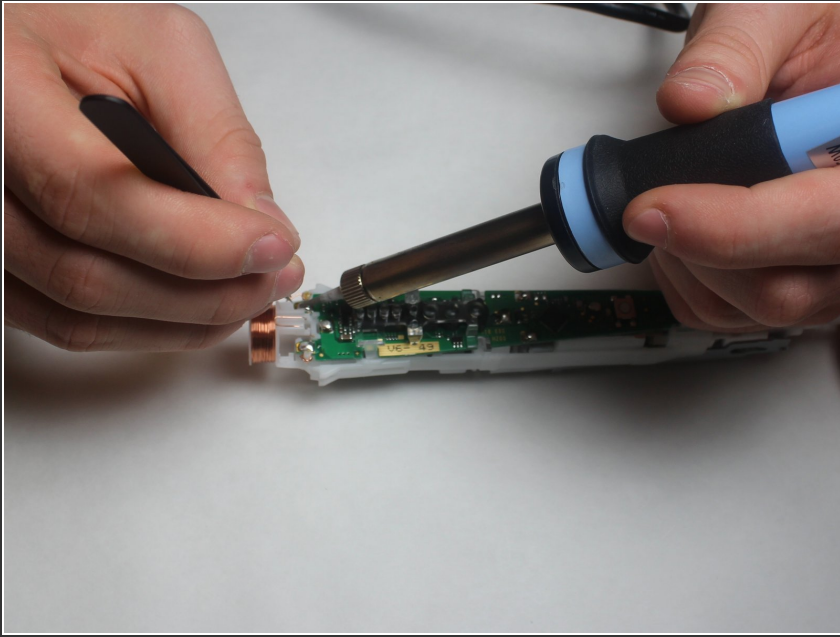
⚠ You can also use a spudger to leverage the assembly out, but this may break the copper wire connected to the induction coil, so be careful.

Step 5



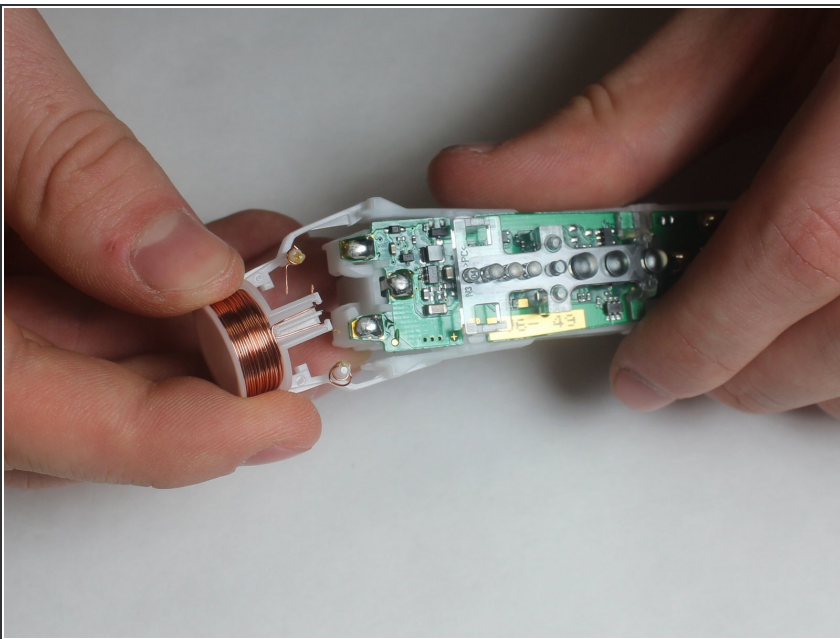
- Unwrap the ends of the wires from the white plastic pegs using a pair of tweezers.
- ⓘ Each wire end is wrapped around the peg 3-4 times.

Step 6



- Melt the solder at the two pads on either side of the top of the motherboard. This will require a high heat soldering iron. Remove the wire from the solder pads using tweezers once the solder melts.

Step 7



- Remove the induction coil by pulling the plastic tabs out of their keepers.
- ⓘ A spudger can be used to remove the plastic tabs from their keepers if necessary.

To reassemble your device, follow these instructions in reverse order.