



Toshiba Satellite P855-S5312 Screen Replacement

This guide will explain how to replace the screen on the Toshiba Satellite P855-S5312.

Written By: Bishop Clark



INTRODUCTION

This guide will explain how to replace the screen on the Toshiba Satellite P855-S5312. Reasons for replacement include black or spotty screen images. The screen is a very fragile component of the device. It requires a small plastic prying tool and a small screwdriver.



TOOLS:

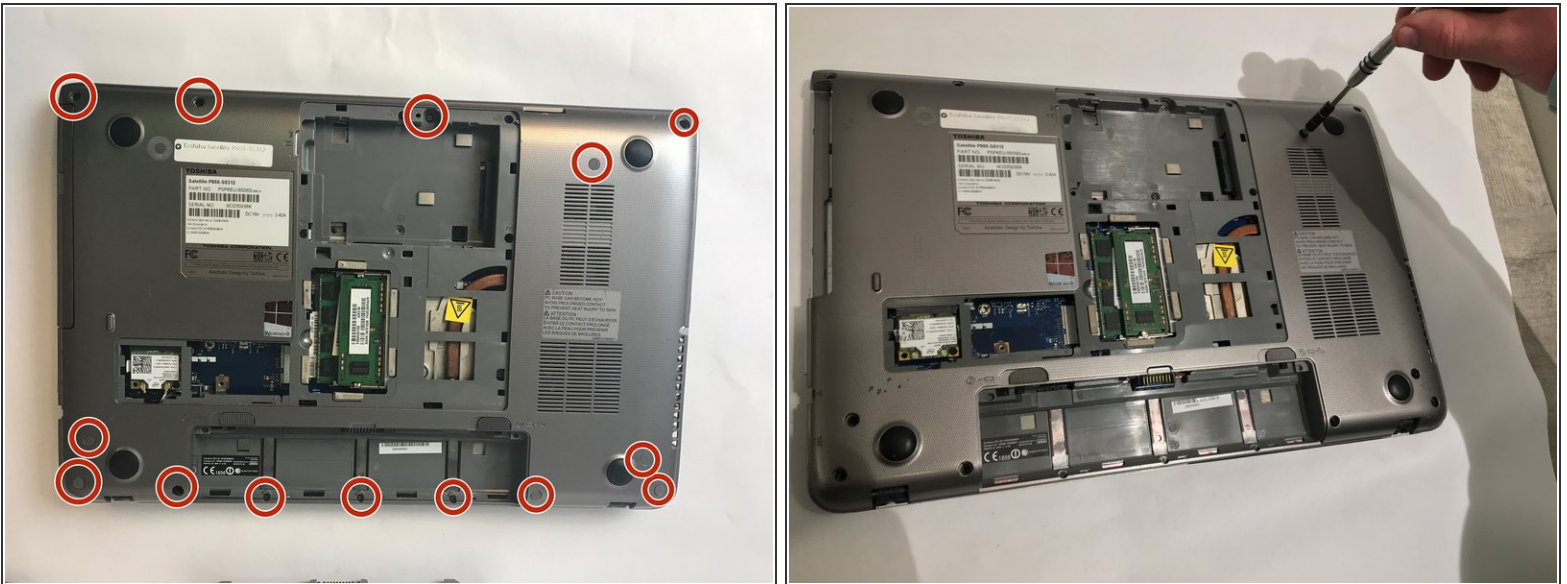
- [Phillips #0 Screwdriver](#) (1)
 - [iFixit Opening Tools](#) (1)
 - [Tweezers](#) (1)
-

Step 1 — Fan



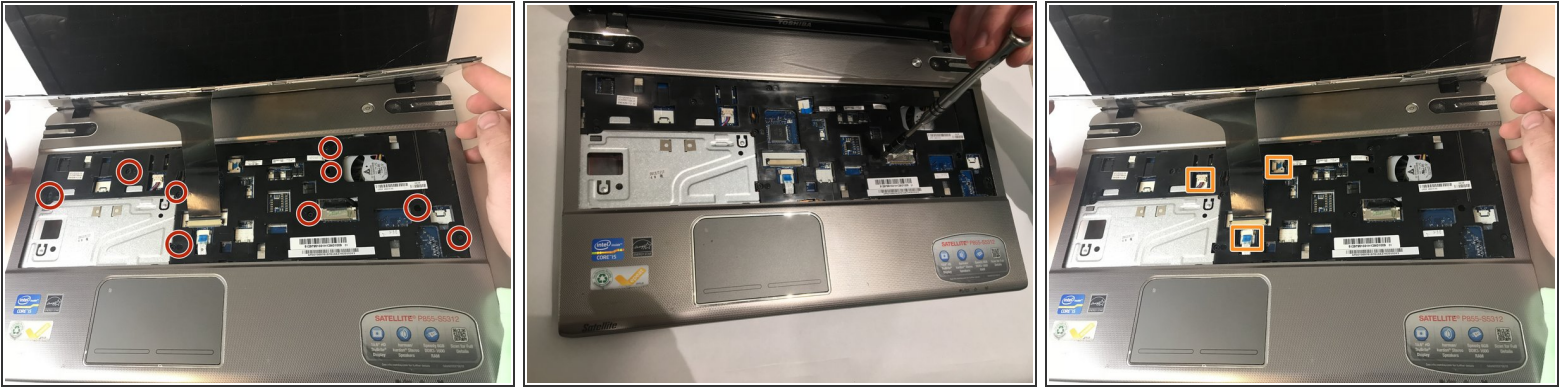
- Unscrew the one 1.5mm screw using a Philips #0 screwdriver holding the L shape panel.
- Pry up the panel to gain access to hidden screws.

Step 2



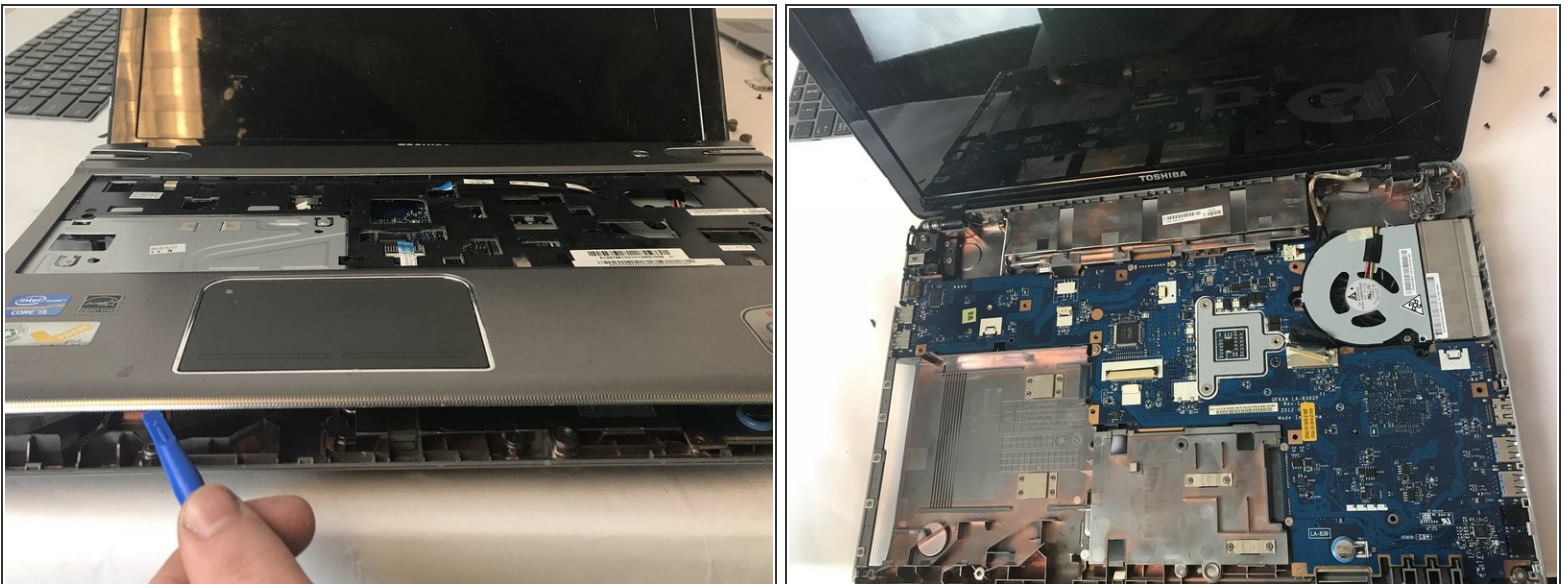
- Remove the fourteen (14) screws using a Philips #0 screwdriver for the 1.5mm screws on the underside of casing.

Step 3



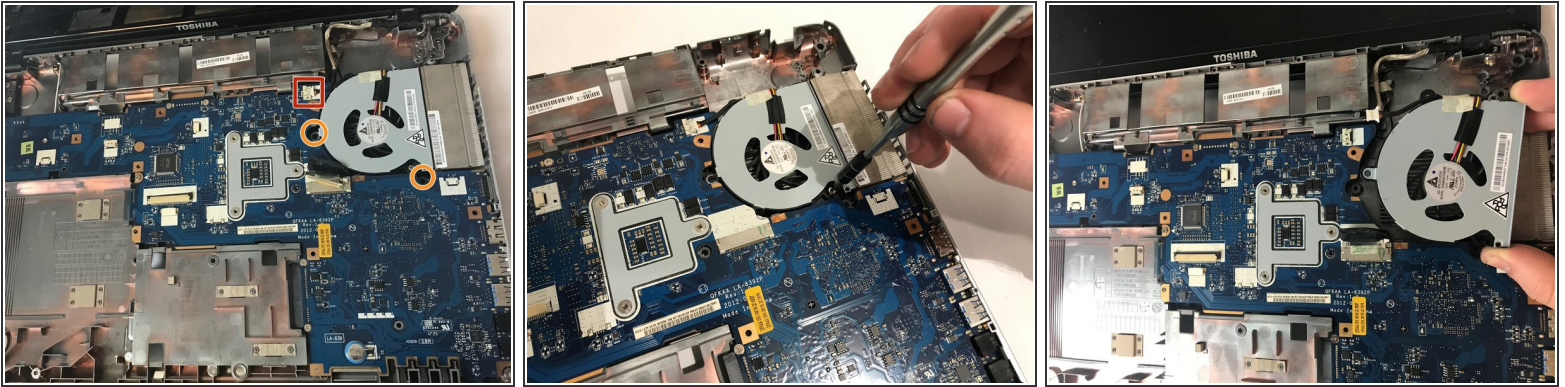
- Unscrew the nine 1.5mm screws using a Philips #0 screwdriver under the keyboard with the F6 printed next to them.
- Unplug the three no-fuss ribbon cable connector cables by gently pulling on them away from you towards the keyboard.

Step 4



- Pry apart the casing with the plastic opening tool.
- Removing the cover under keyboard.

Step 5



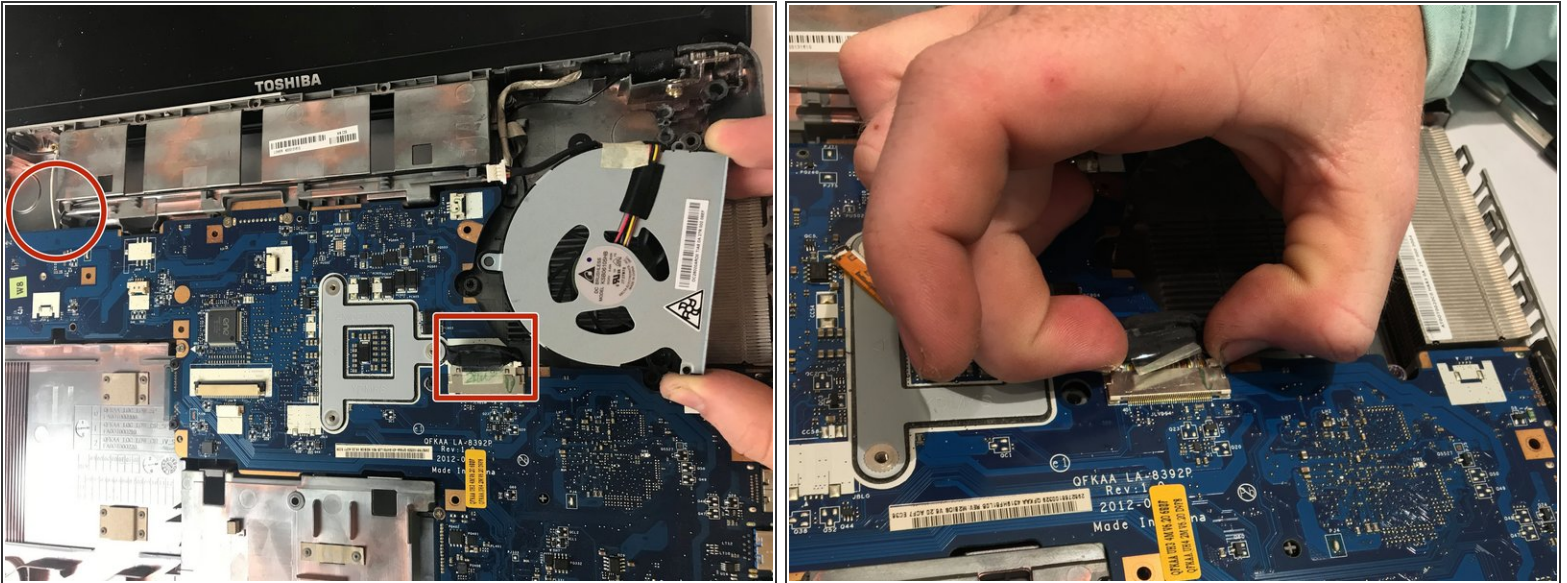
- Unplug the single no-fuss cable connector using the plastic opening tool pushing the edges towards the fan.
- Unscrew the two 1.5mm screws using a Philips #0 screwdriver by the head mounting holding down the fan.
- Pull the fan up and remove it from the device.

Step 6 — Screen



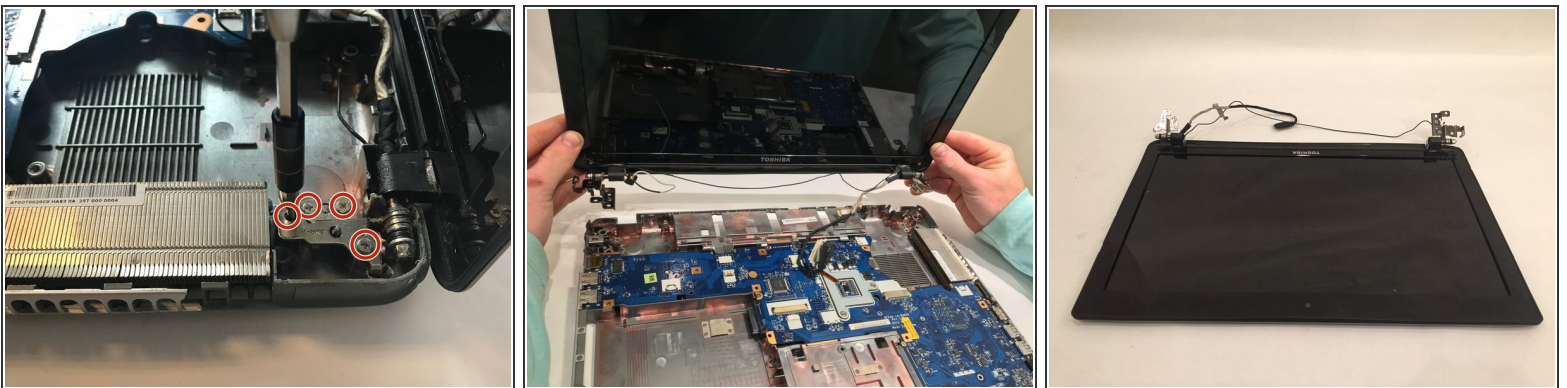
- Turn laptop upside down with the spine facing towards you and locate the microchip.
- Remove the white and black sliding connector wires by prying upward with tweezers gently pulling the black and white wires upwards.

Step 7



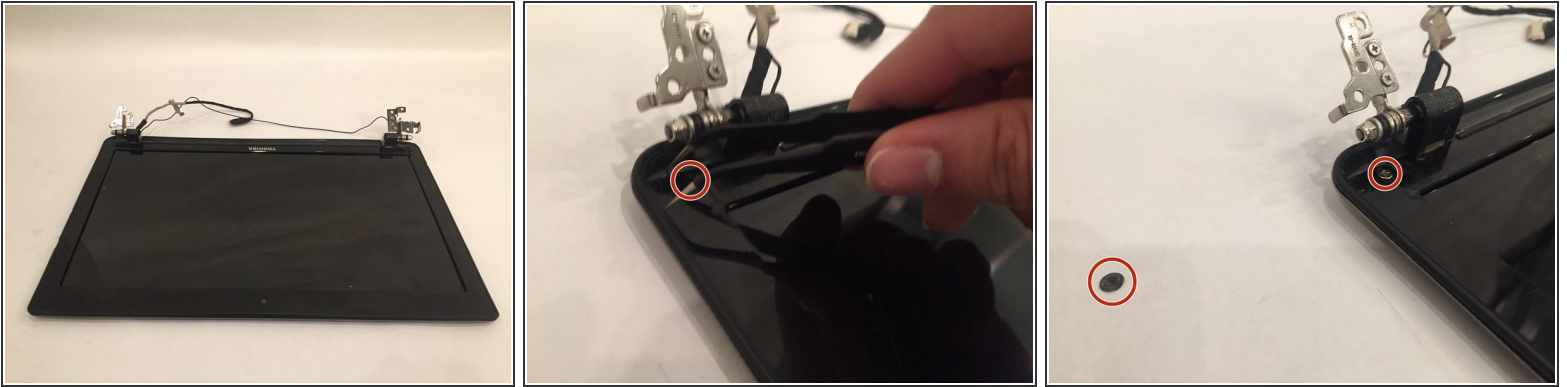
- Unplug the single ZIF connector ribbon by gently pulling up.
- Pull the white and black wires through from the underside of device.

Step 8



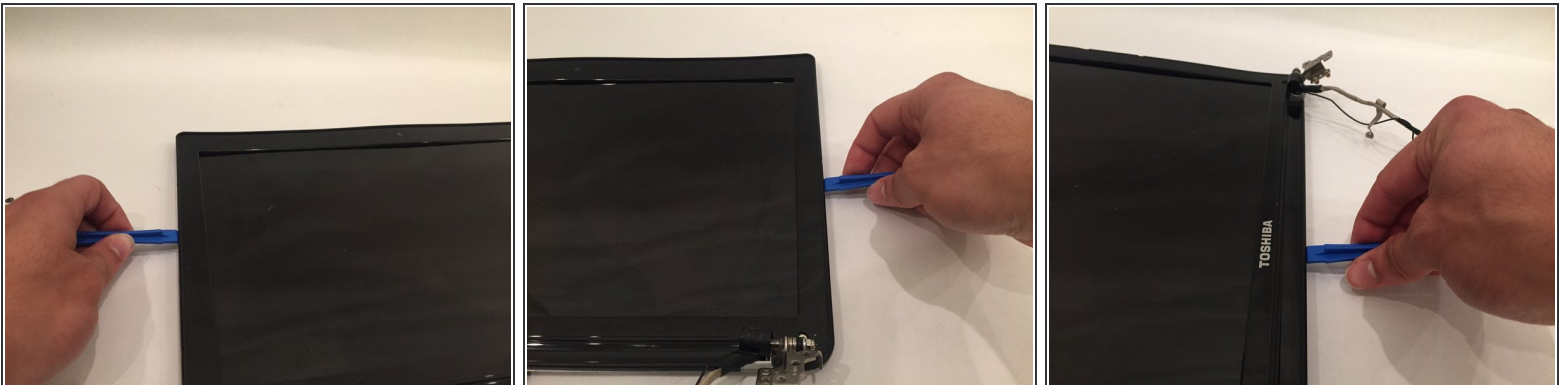
- Unscrew the four hinges mounting the 1.5mm screws on each side from casing using a Philips #0 screwdriver.
- Remove entire screen assembly from casing.

Step 9



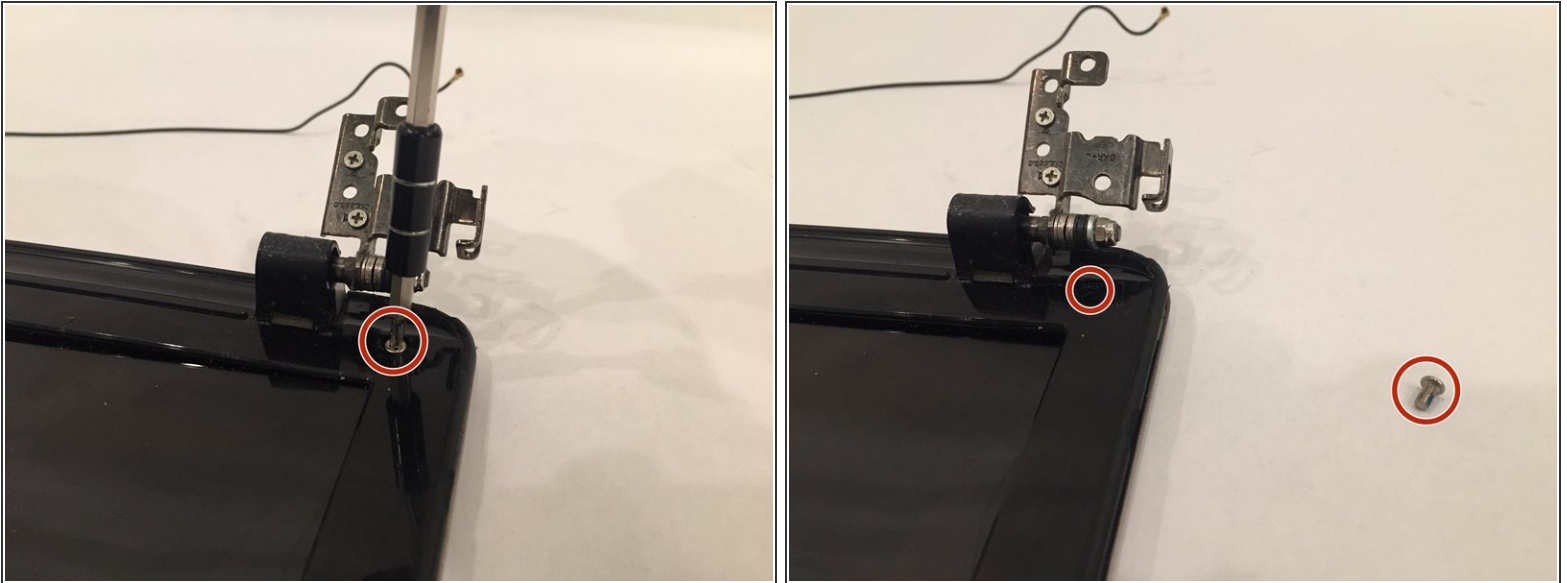
- Locate the two black sticker covers on the bottom of both sides of the monitor
- Using a pair of tweezers, carefully remove black stickers concealing two screws

Step 10



- Using a prying tool, carefully pry along the edges of the screen cover

Step 11



- Unscrew the two 1.5mm screws at the bottom of monitor using a Philips #0 screwdriver.

Step 12



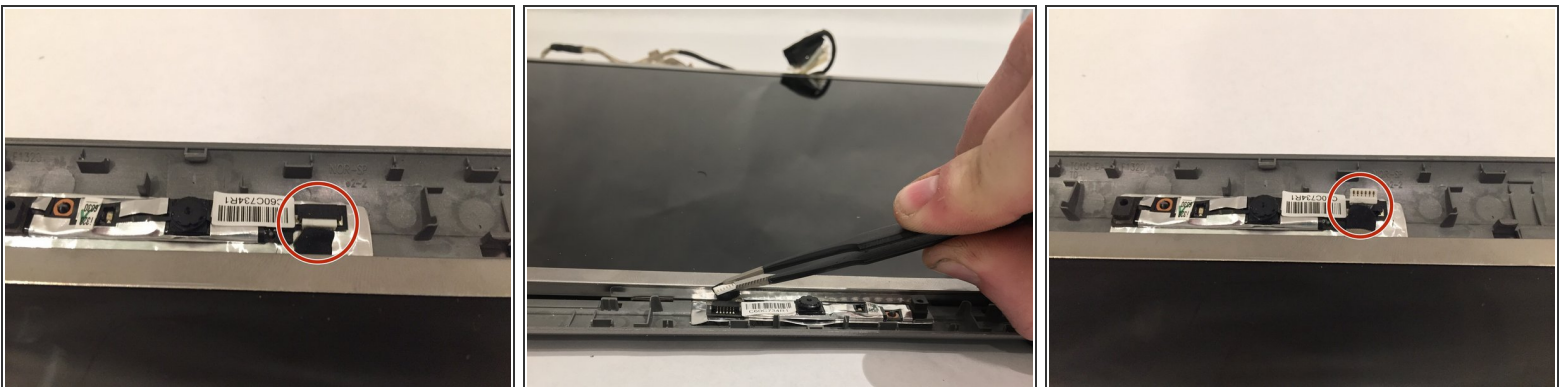
- With all the edges of the screen cover pried up, carefully remove the screen cover.

Step 13



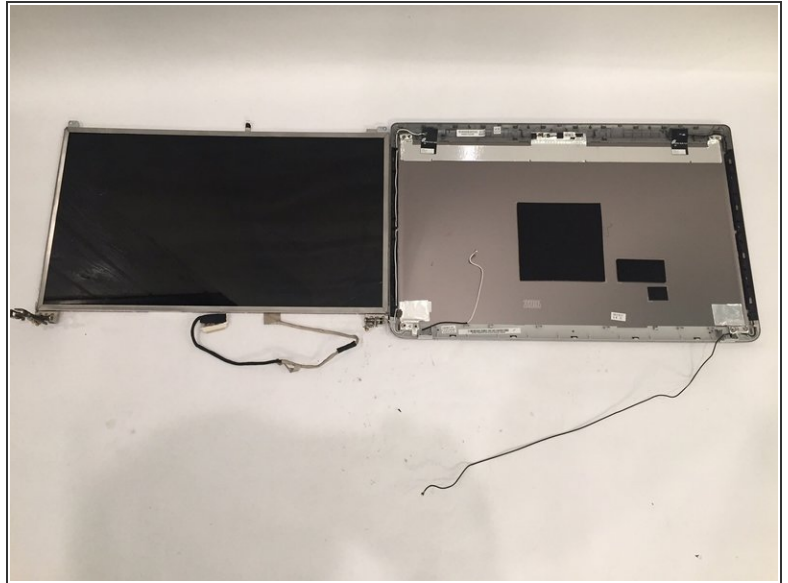
- Using the Philips #0 screwdriver, remove the four 1.5mm screws at the corners of the screen.

Step 14



- At the top of the screen, using the tweezers, remove the ZIF ribbon connector by gently pushing it up.

Step 15



- Remove the screen from the device.

⚠ Make sure to be careful because the screen is very fragile.

To reassemble your device, follow these instructions in reverse order.