



# Wahl Professional Designer Power Cord Replacement

This guide contains simple instructions in order to replace the power cord on your device.

Written By: Sophia Swearengin



---

## INTRODUCTION

If your device is not working due to a problem with your power cord this guide will allow you to replace it to fix your problem.

---



### TOOLS:

- [Phillips #0 Screwdriver](#) (1)
  - [Phillips #1 Screwdriver](#) (1)
-

## Step 1 — Power Cord



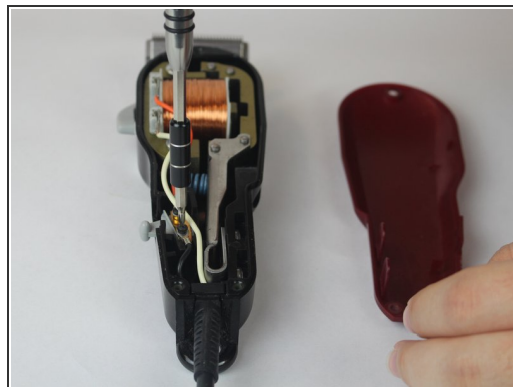
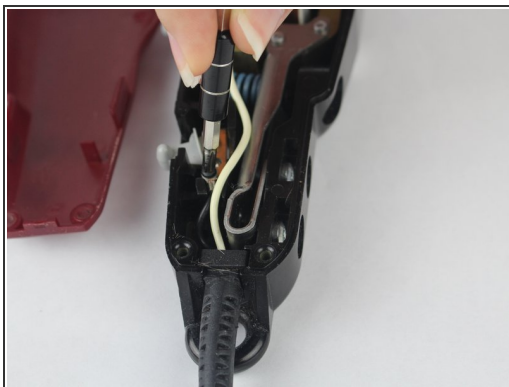
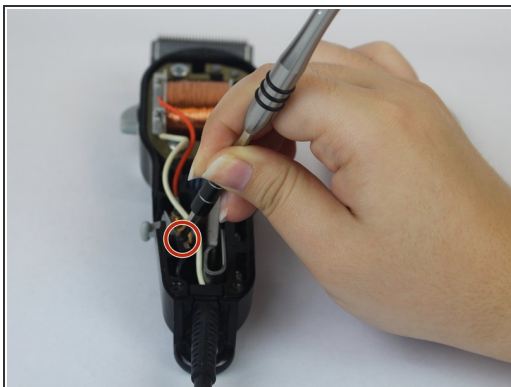
- Unscrew the 12 mm Phillips head screws located at the top of the cover and at the bottom two corners, using a Phillips #1 Screwdriver.

## Step 2



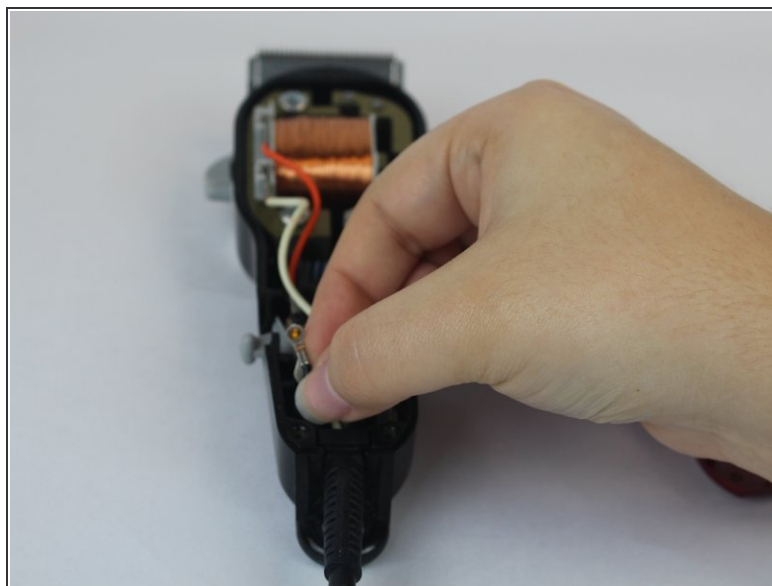
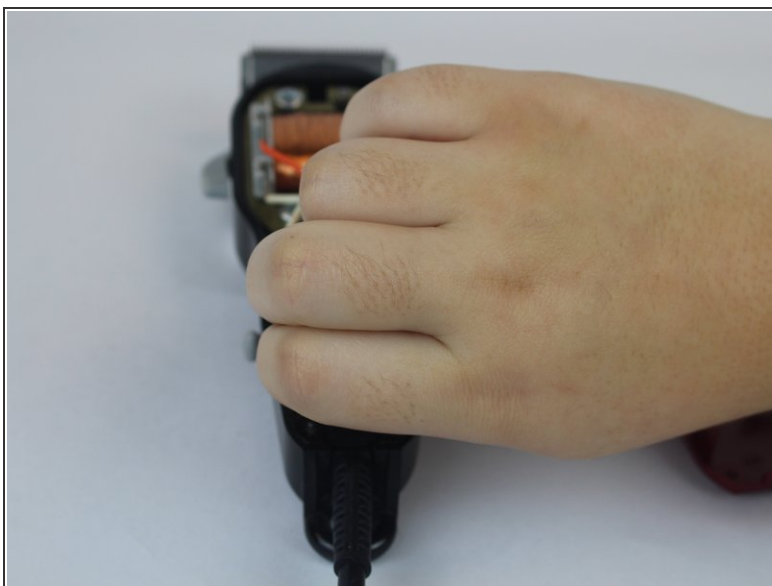
- Remove the cover from the device.

### Step 3



- Unscrew the black 5.556 mm Phillip head screw on the power switch, closest to the power cord with a Phillips #0 Screwdriver.

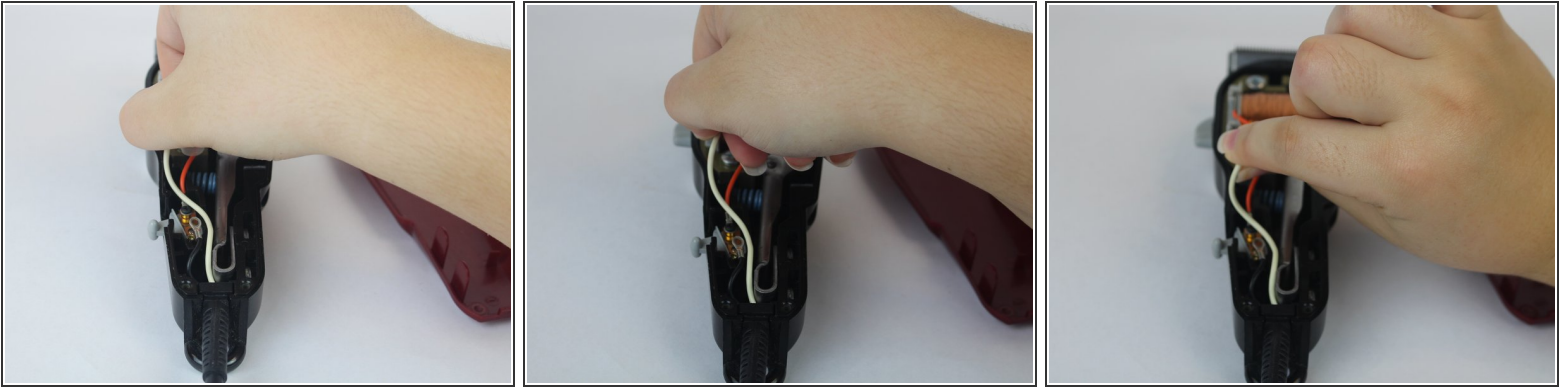
### Step 4



- Gently remove the black wire connected to the black screw.

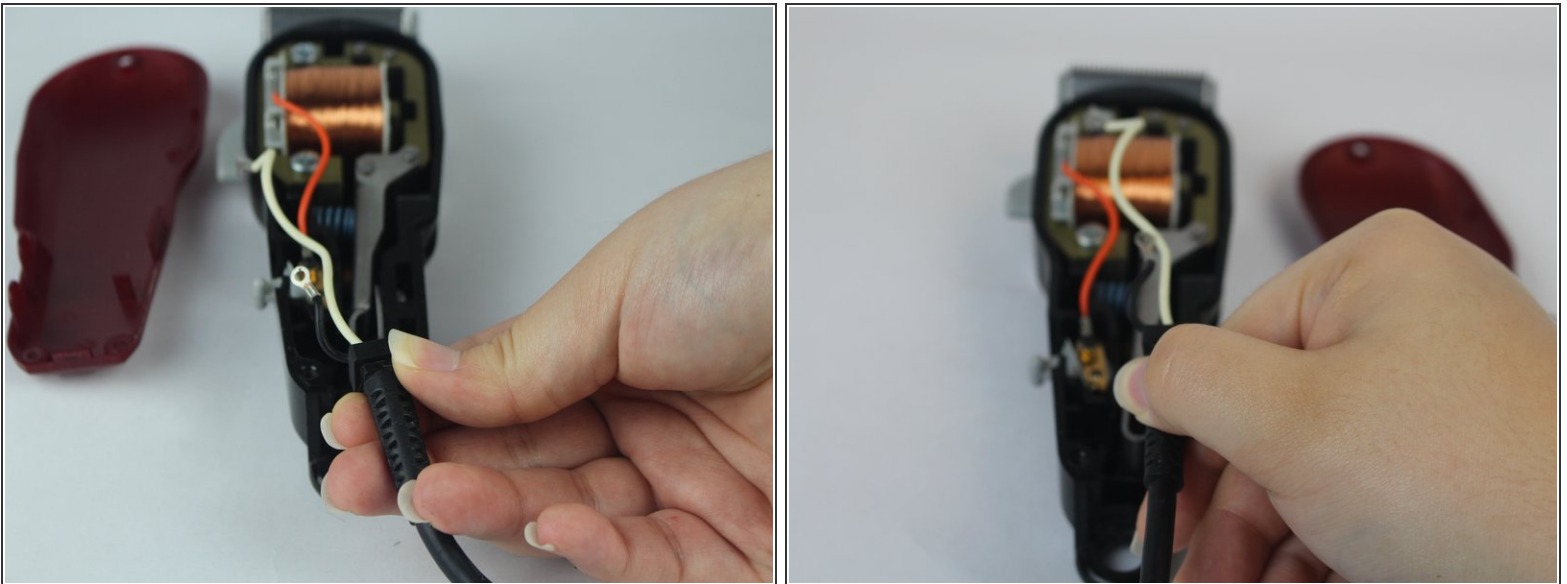


## Step 5



- Remove the white wire connected to the power cord and the motor by grabbing the white wire firmly on both sides near the motor mounting and wiggling until release.

## Step 6



- Remove the power cord from its mount at the bottom of the device.

To reassemble your device, follow these instructions in reverse order.