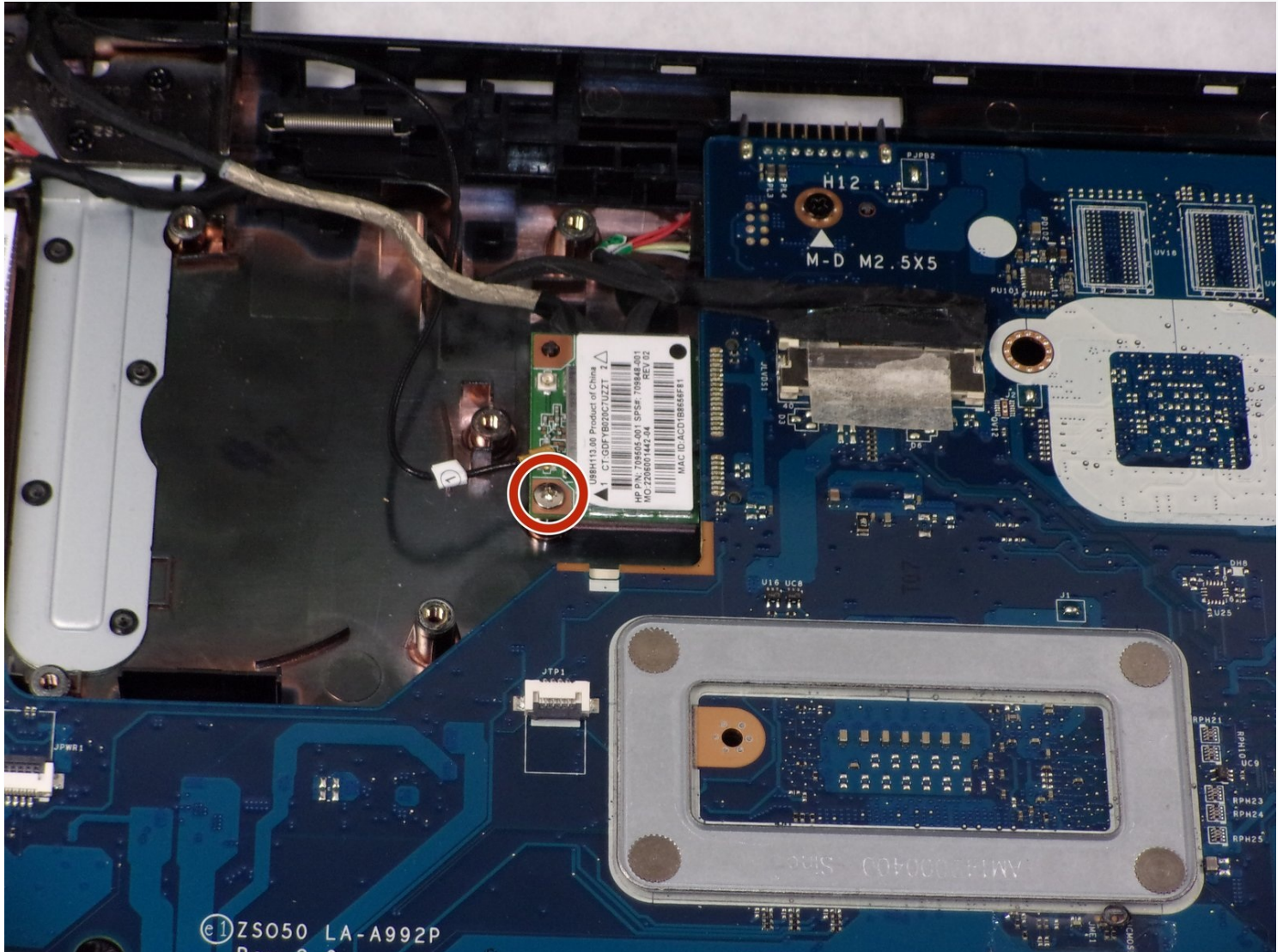




HP 15-r137wm TouchSmart Screen Replacement

You can use this guide to help you safely and...

Written By: Ross B Jacques



INTRODUCTION

You can use this guide to help you safely and effectively remove the screen from your HP 15-r137wm TouchSmart device.

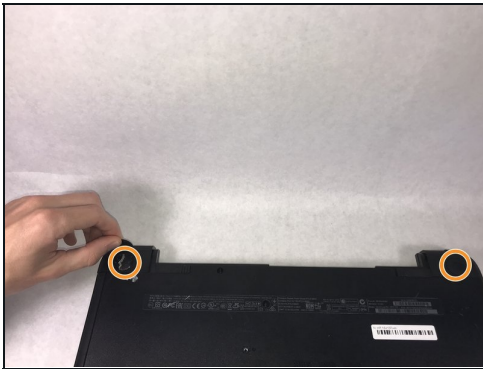
TOOLS:

[iFixit Opening Tool](#) (1)

[Anti-Static Wrist Strap](#) (1)

[Phillips #0 Screwdriver](#) (1)

Step 1 — Front Panel Assembly



 Make sure that the device is powered off and unplugged before removing components.

- Remove all ten (10) 5.5 mm Phillips #0 screws.
- Remove the two (2) plastic tabs located at the rear of the panel. Locate the two (2) 7.5mm Phillips #0 screws underneath the pads and remove.

Step 2



- Use a wide plastic opening tool to pry off the top casing.
- ⓘ Be cautious not to crack the casing near the keyboard as it is quite fragile.
- Lift the cover off carefully as there are wires still attached to internal components.

⚠ After panel is removed, use an [anti-static wrist strap](#) to ensure the motherboard does not get any external shocks from static discharge.

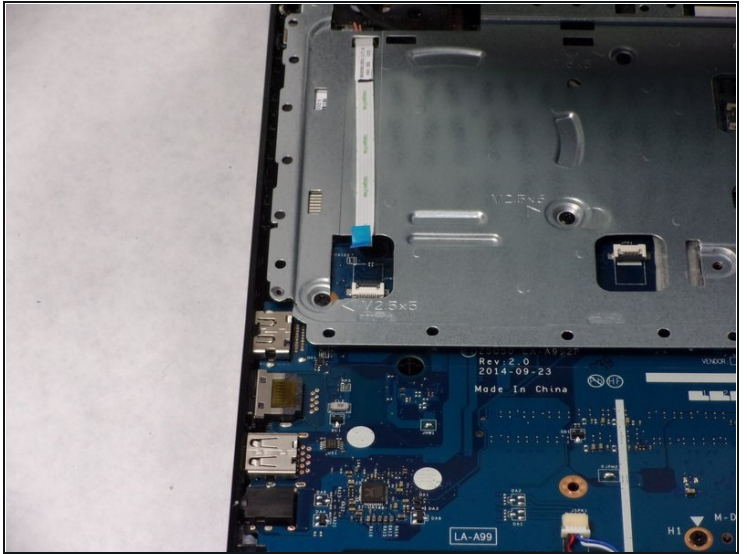
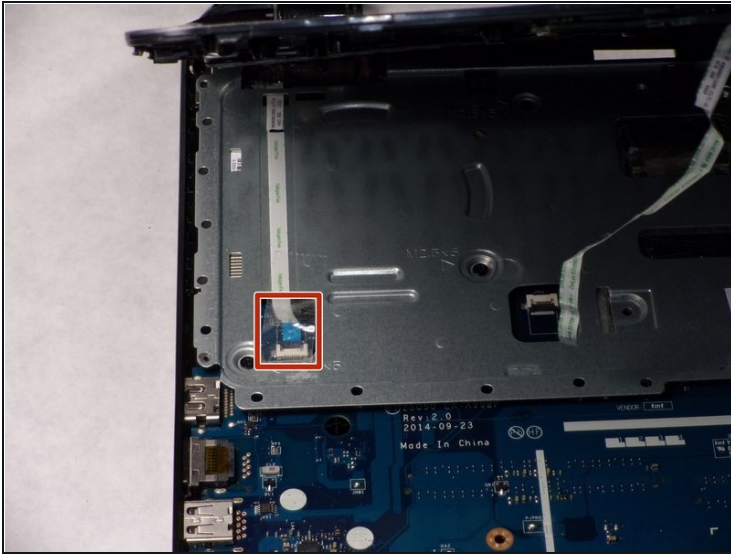
Step 3



⚠ The connection for the track pad is still connected.

- Move the keyboard slightly out of the way to locate the connection.
- Disconnect the small wire protruding from the motherboard underneath the metal plate.

Step 4

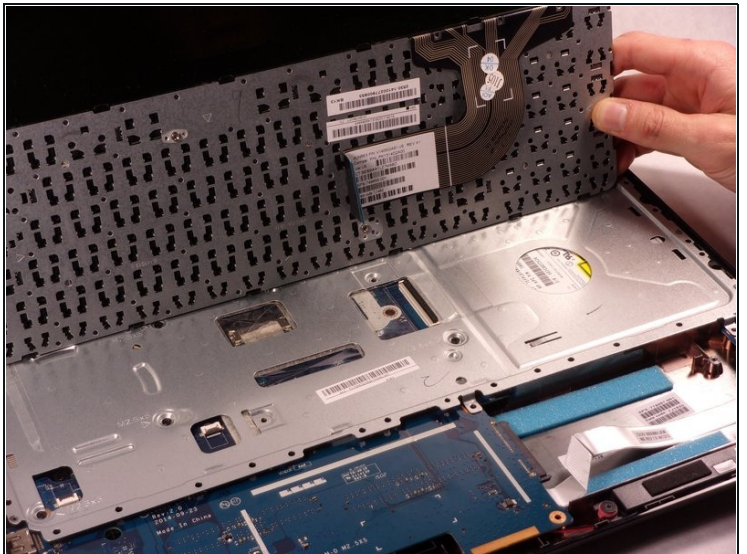
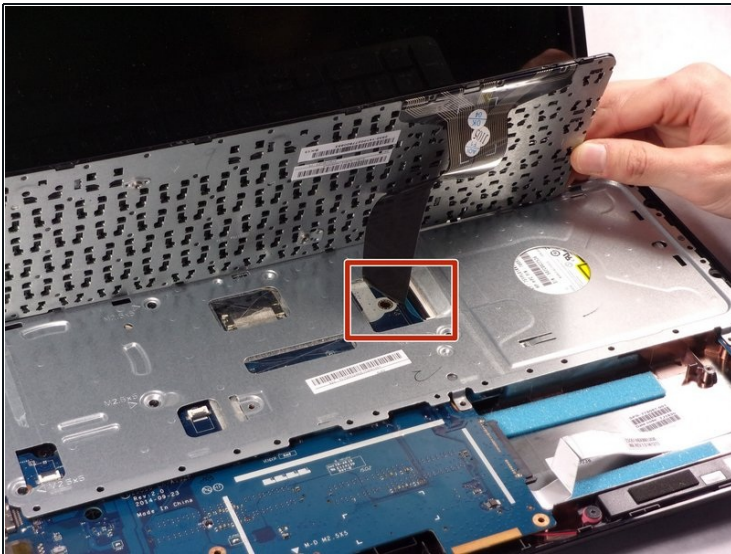


- Locate the connection between the power button and the connecting cable.

⚠ Do not lift the front panel off too far as the cable is still attached.

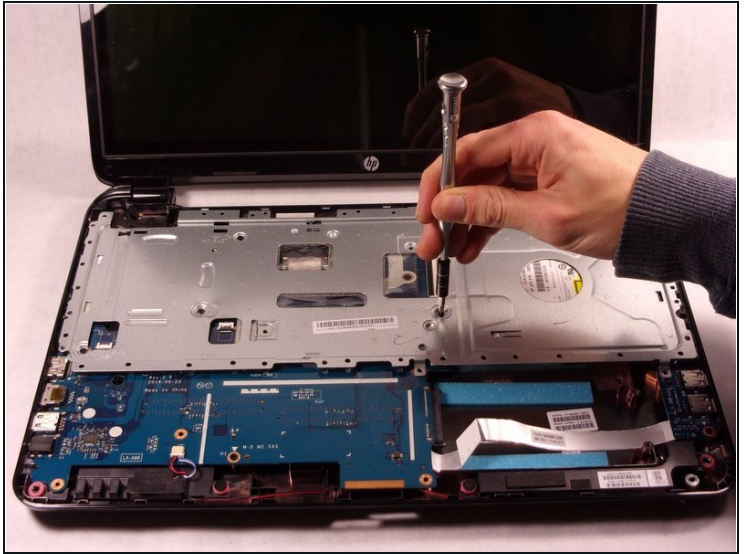
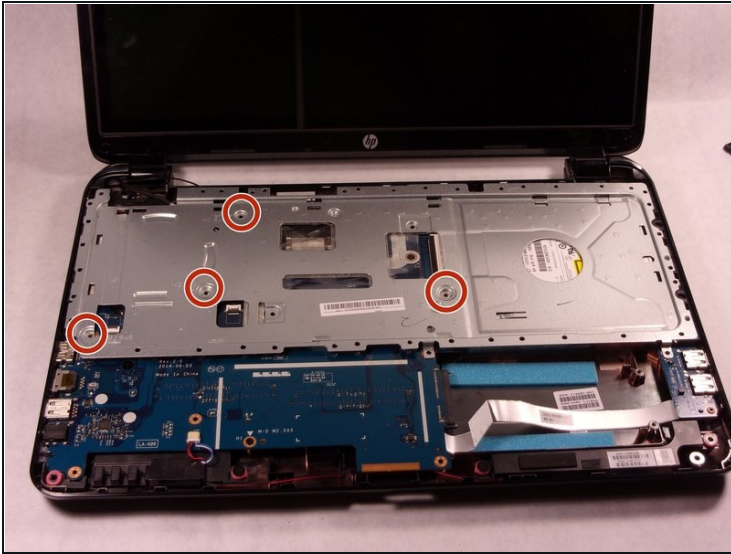
- Remove the cable from the motherboard carefully.

Step 5 — Keyboard



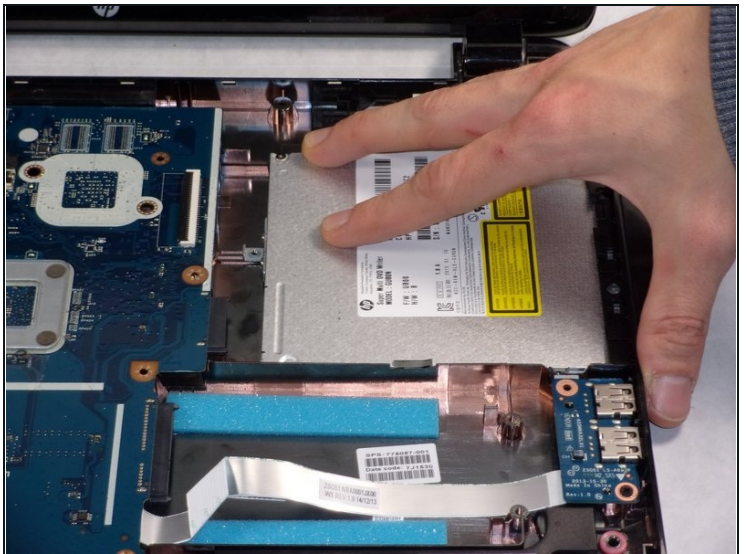
- Disconnect the connection between the keyboard and the motherboard.

Step 6



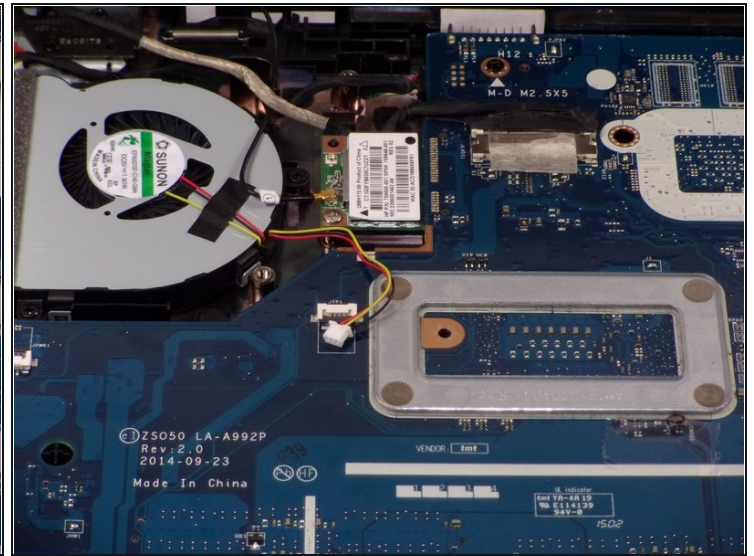
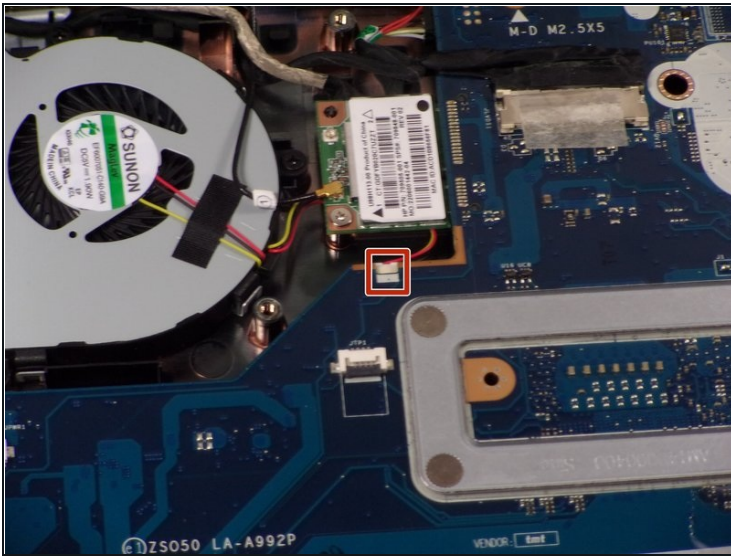
- Remove the four (4) 2.5mm by 3.5mm Phillips #0 screws from the metal retaining plate.
- Lift the metal retaining plate off and away from the device.

Step 7 — CD Drive



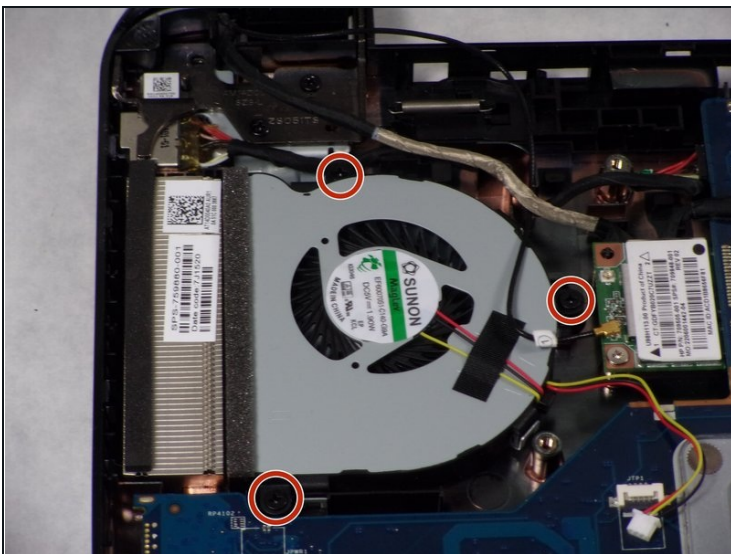
- Slide the CD drive out slowly by pulling it to the right. There are no screws attached, but there is a connection to the motherboard.

Step 8 — Cooling Fan



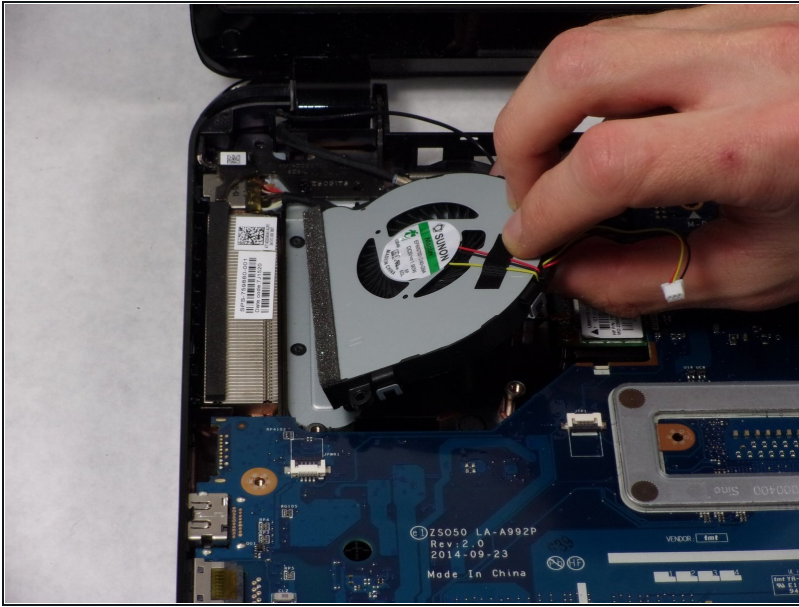
- Locate the small connection on the motherboard and disconnect it by slowly pulling it away from the motherboard.
- ⓘ Slowly disconnect the cable as the wires are very small and fragile

Step 9



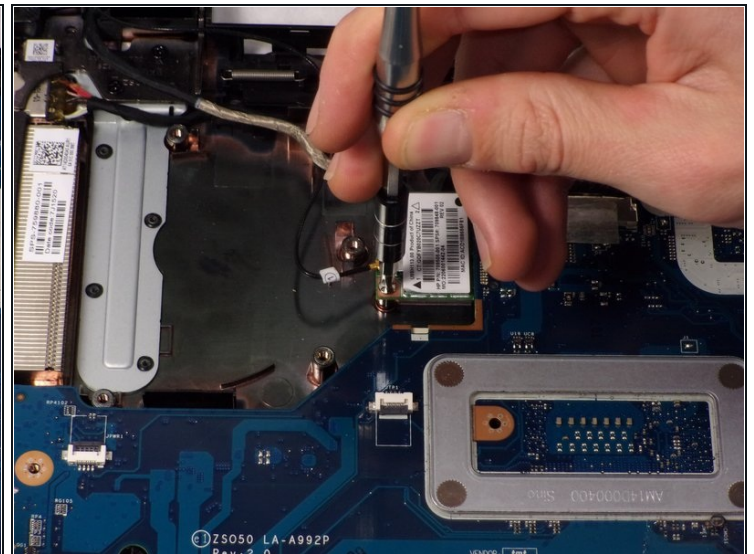
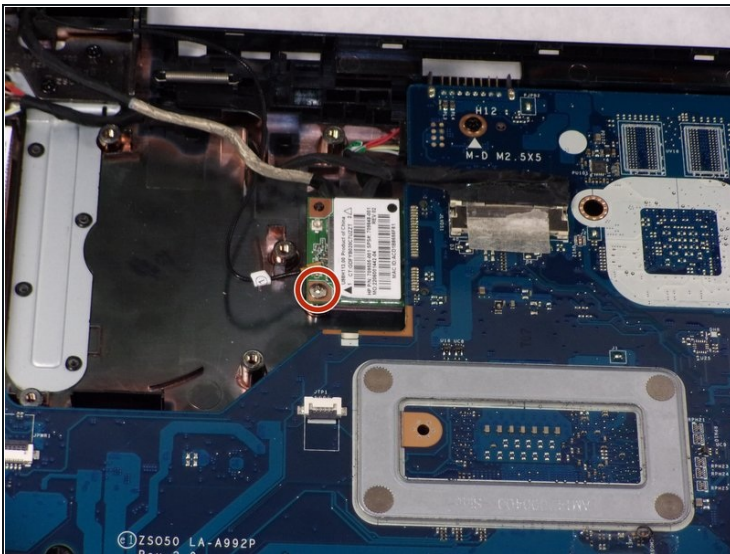
- Remove the three (3) 2.5mm by 3.5mm Phillips #0 screws from the fan.

Step 10



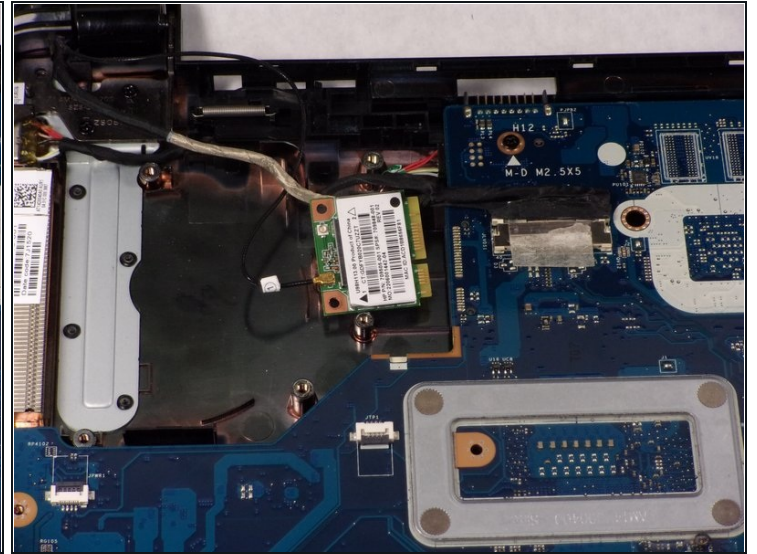
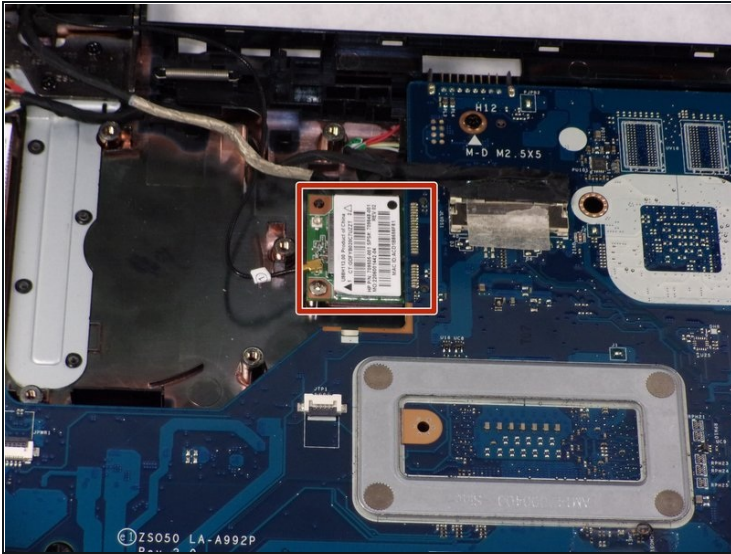
- Remove the cooling fan from the housing carefully.
- ① The fan may be connected to the small foam screen. Pull gently to release it.

Step 11 — Screen



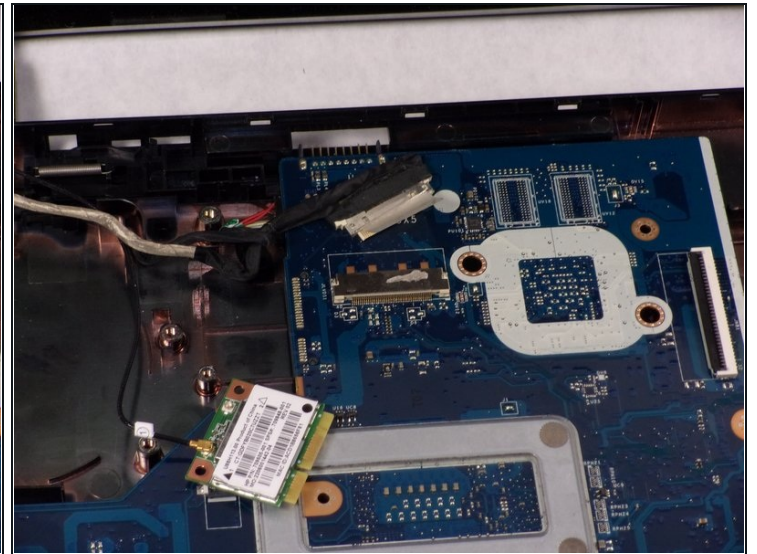
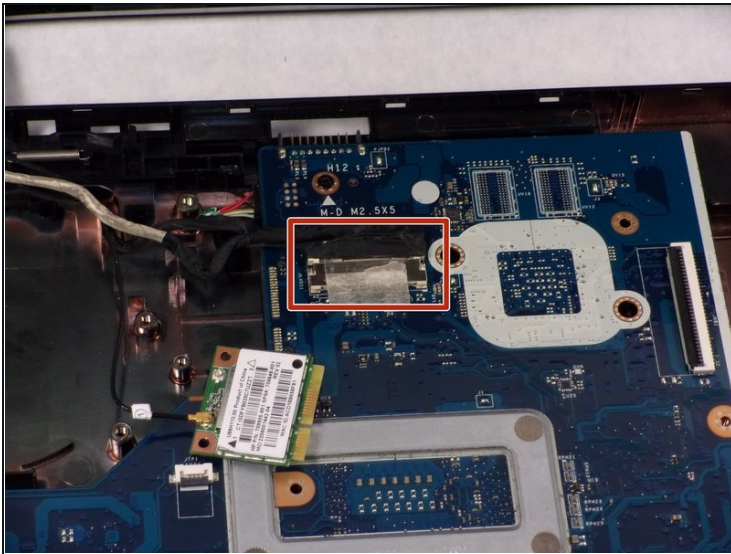
- Remove the 5.5mm Phillips #0 screw.

Step 12



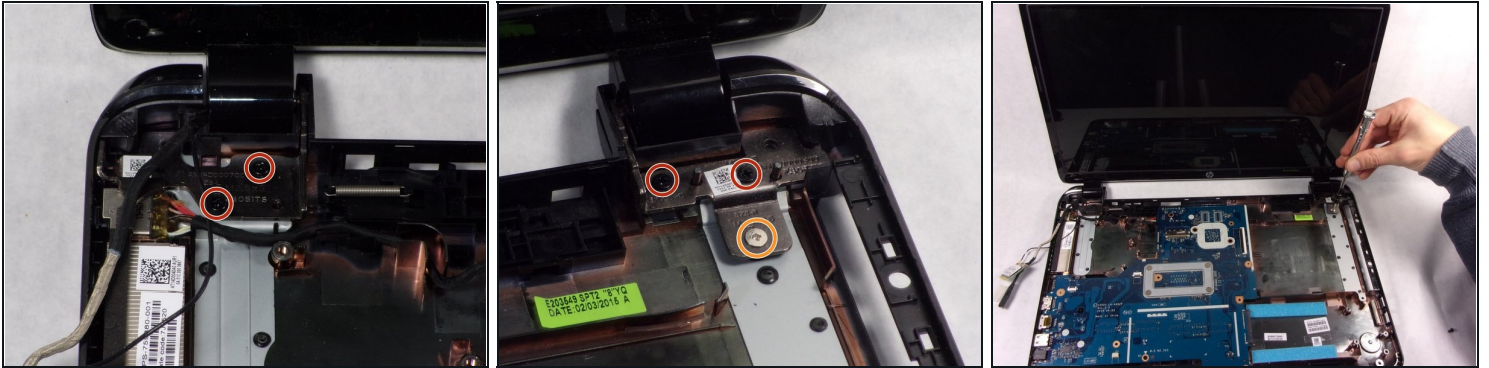
- Gently pull and slide the video card out of its connector.

Step 13



- Lift up tape, and then remove the power cable from its connector.

Step 14



- Remove all four (4) 5.5mm Phillips #0 screws.
- Remove the one (1) 2.5mm Phillips #0 screw.

⚠ Since all of the screws are now removed, the screen will begin to fall off on its own. make sure the screen is supported before removal.

Step 15



- The screen can now be lifted out of place from the laptop.

To reassemble your device, follow these instructions in reverse order.