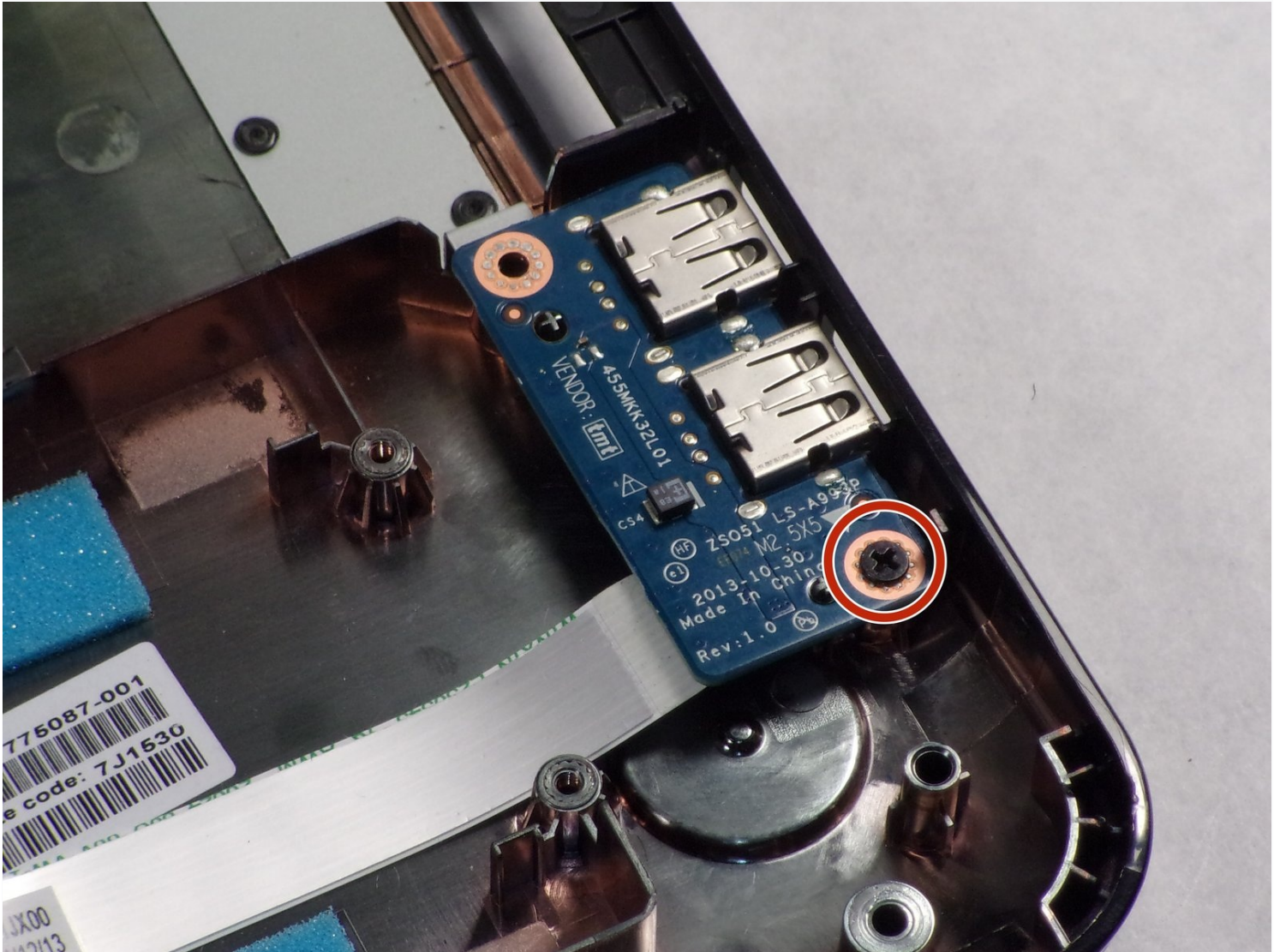




# HP 15-r137wm TouchSmart USB Ports Replacement

This guide will help you replace and/or remove...

Written By: Ross B Jacques



# INTRODUCTION

This guide will help you replace and/or remove the USB ports on your device. The USB ports are essential to connecting external devices such as flash drives and wireless mouse adapters. Removal of the USB ports is quite simple once other components are removed.

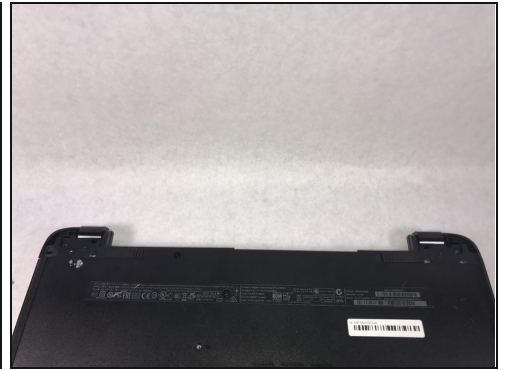
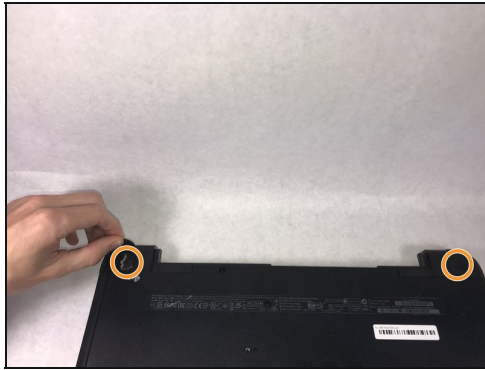
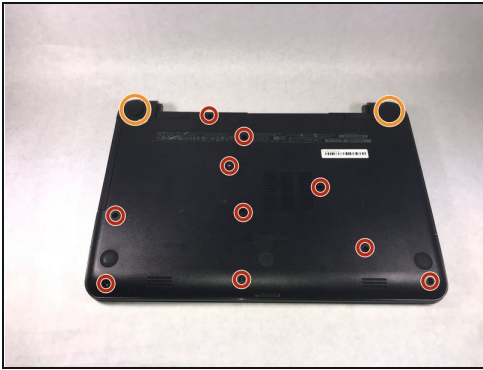
## TOOLS:

[iFixit Opening Tool](#) (1)

[Anti-Static Wrist Strap](#) (1)

[Phillips #0 Screwdriver](#) (1)

## Step 1 — Front Panel Assembly



 Make sure that the device is powered off and unplugged before removing components.

- Remove all ten (10) 5.5 mm Phillips #0 screws.
- Remove the two (2) plastic tabs located at the rear of the panel. Locate the two (2) 7.5mm Phillips #0 screws underneath the pads and remove.

## Step 2



- Use a wide plastic opening tool to pry off the top casing.
- ❗ Be cautious not to crack the casing near the keyboard as it is quite fragile.
- Lift the cover off carefully as there are wires still attached to internal components.

⚠ After panel is removed, use an [anti-static wrist strap](#) to ensure the motherboard does not get any external shocks from static discharge.

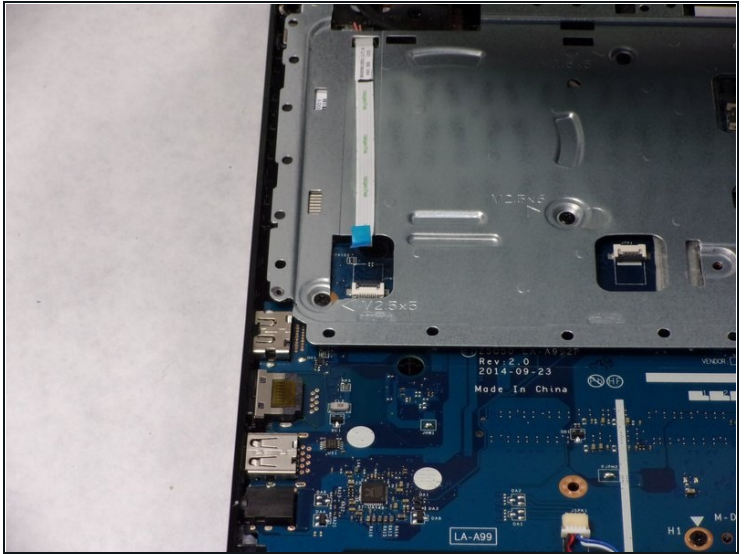
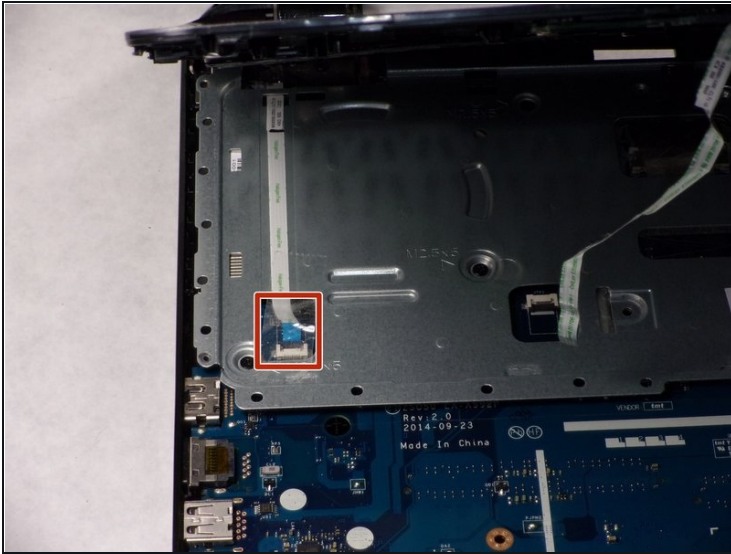
## Step 3



⚠ The connection for the track pad is still connected.

- Move the keyboard slightly out of the way to locate the connection.
- Disconnect the small wire protruding from the motherboard underneath the metal plate.

## Step 4

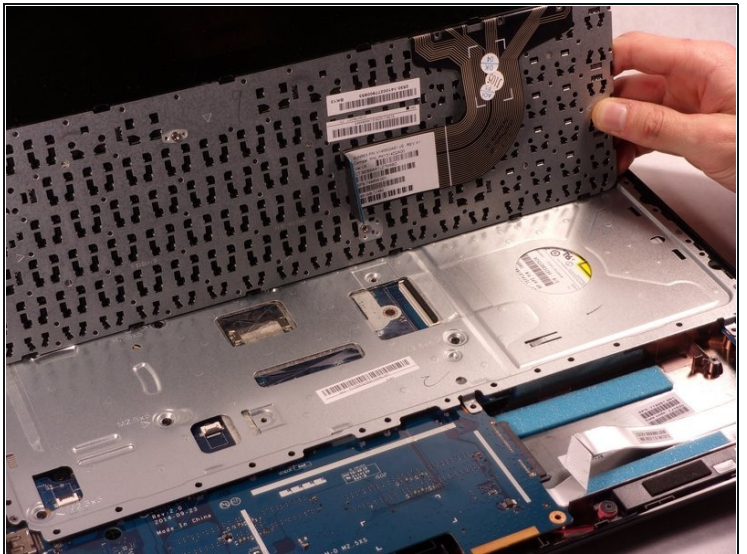
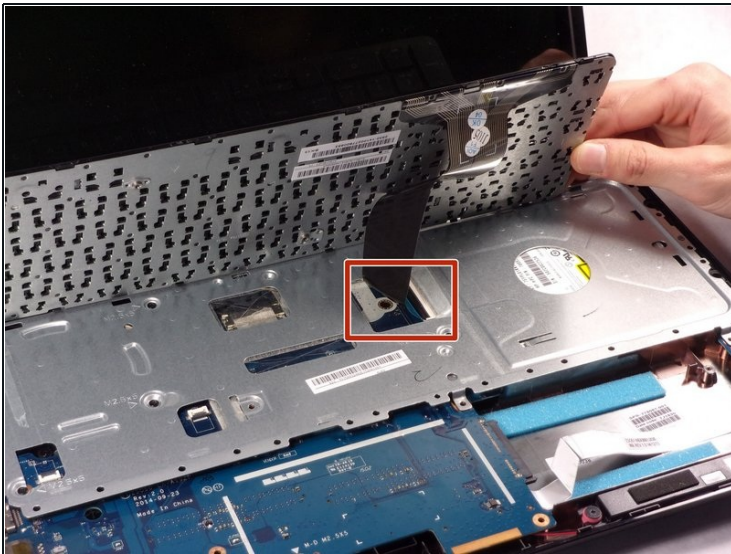


- Locate the connection between the power button and the connecting cable.

⚠ Do not lift the front panel off too far as the cable is still attached.

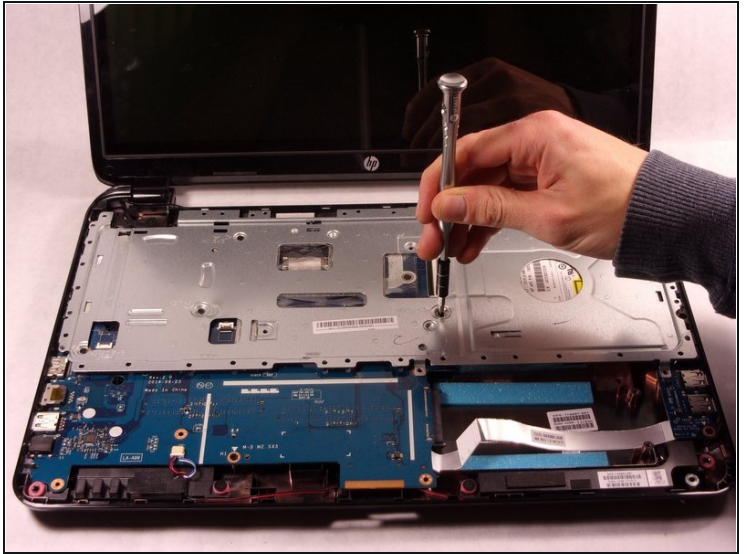
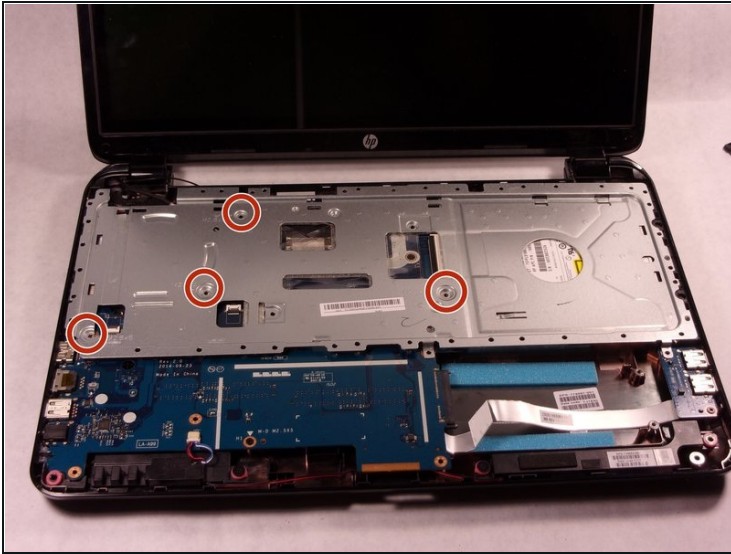
- Remove the cable from the motherboard carefully.

## Step 5 — Keyboard



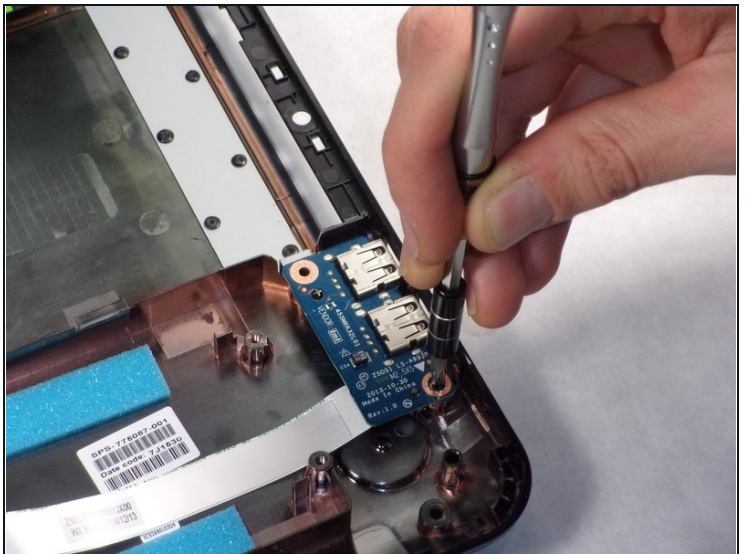
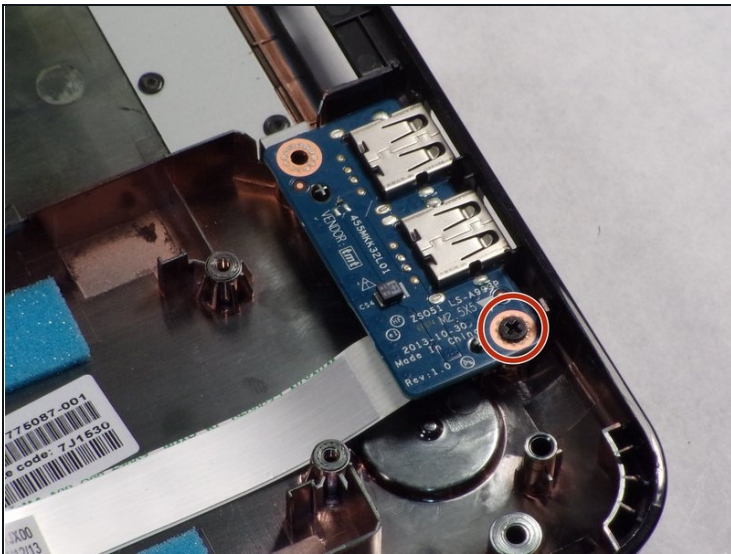
- Disconnect the connection between the keyboard and the motherboard.

## Step 6



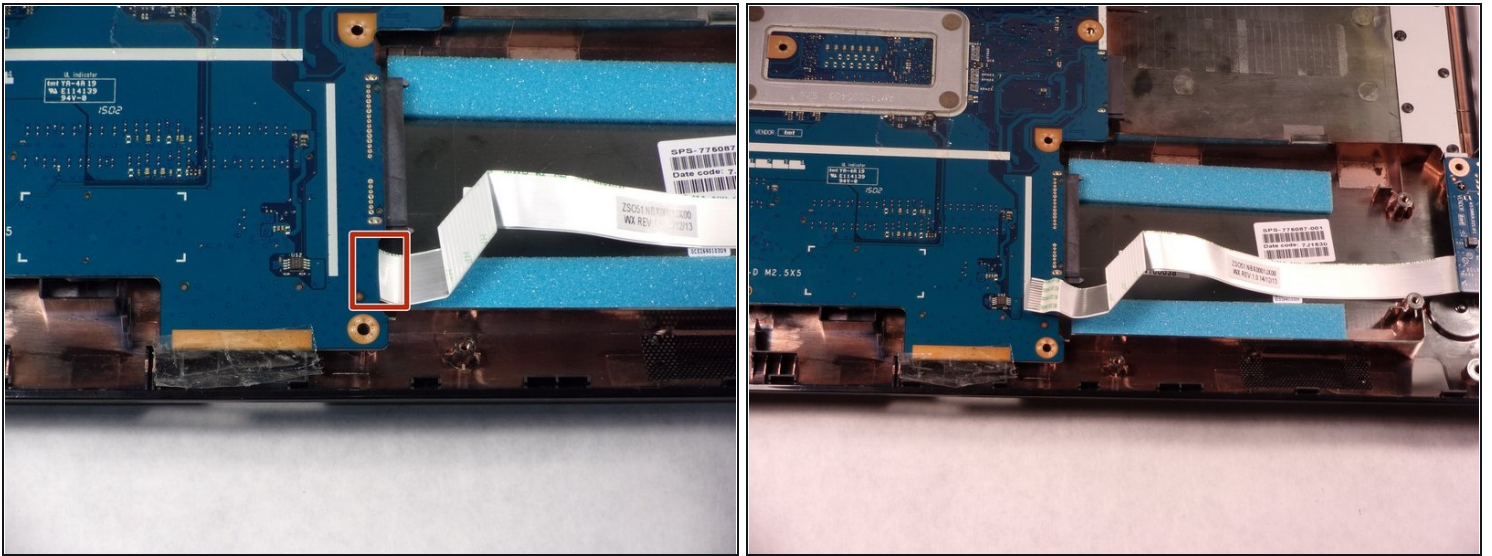
- Remove the four (4) 2.5mm by 3.5mm Phillips #0 screws from the metal retaining plate.
- Lift the metal retaining plate off and away from the device.

## Step 7 — USB Ports



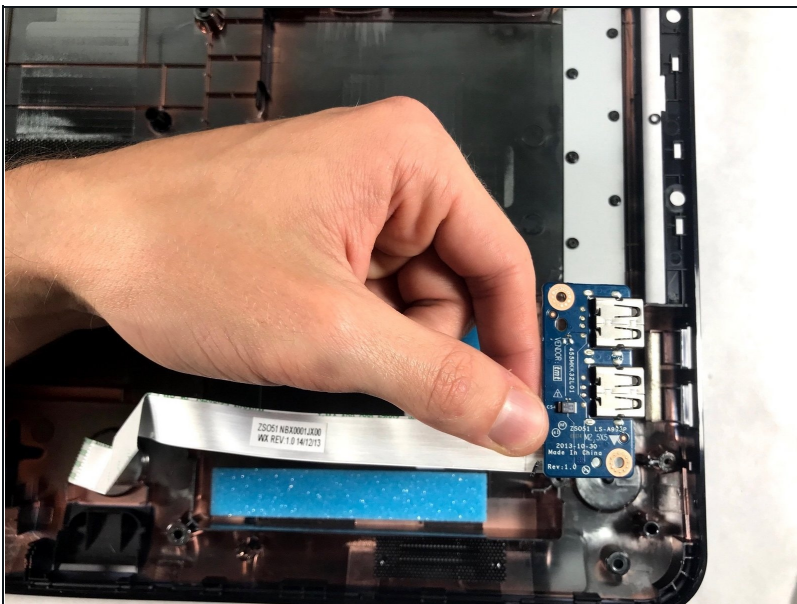
- Remove the one (1) 2.5mm by 3.5 mm Phillips #0 screw from the USB port plate.

## Step 8



- Disconnect the small connection from underneath the motherboard.
- ① The cable is glued to the housing, so gently pull to remove the entire component.

## Step 9



- Lift the USB port out of the laptop.

To reassemble your device, follow these instructions in reverse order.