



# Asus Q302UA-BHI5T20 Motherboard Replacement

It will replace a faulty motherboard.

Written By: Dymon Alfred

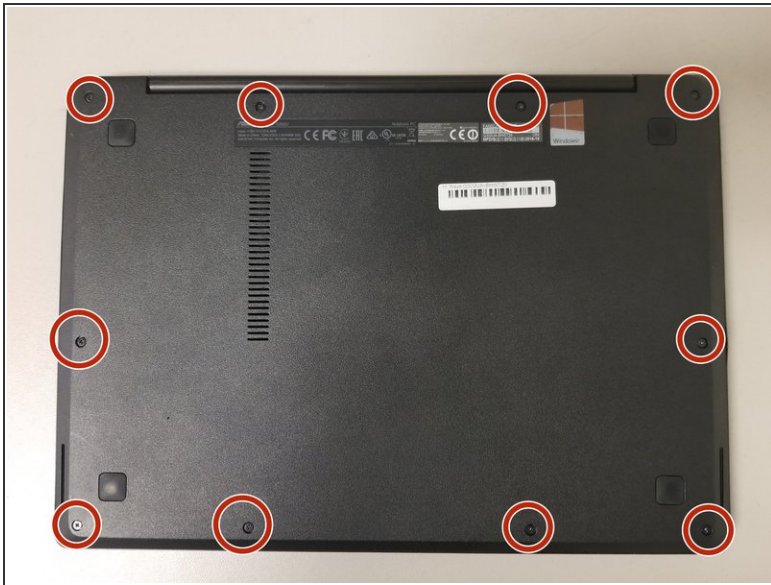




## TOOLS:

- [Phillips #0 Screwdriver](#) (1)
-

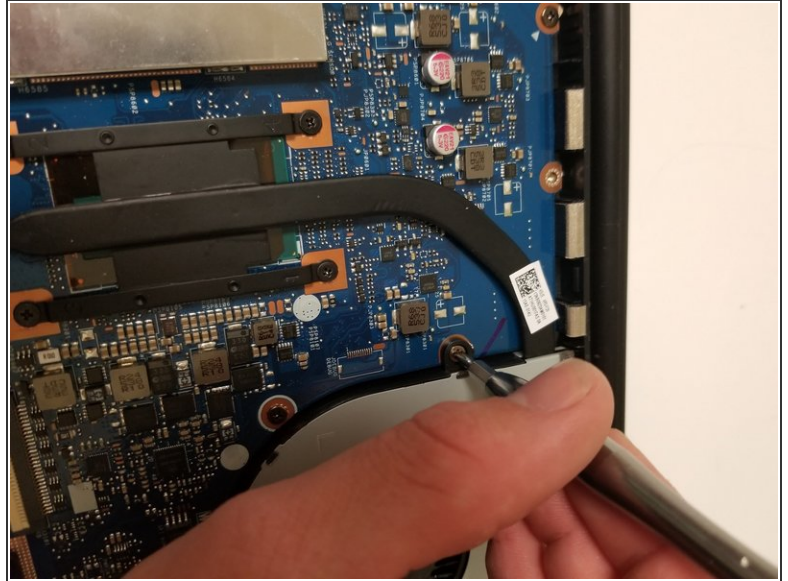
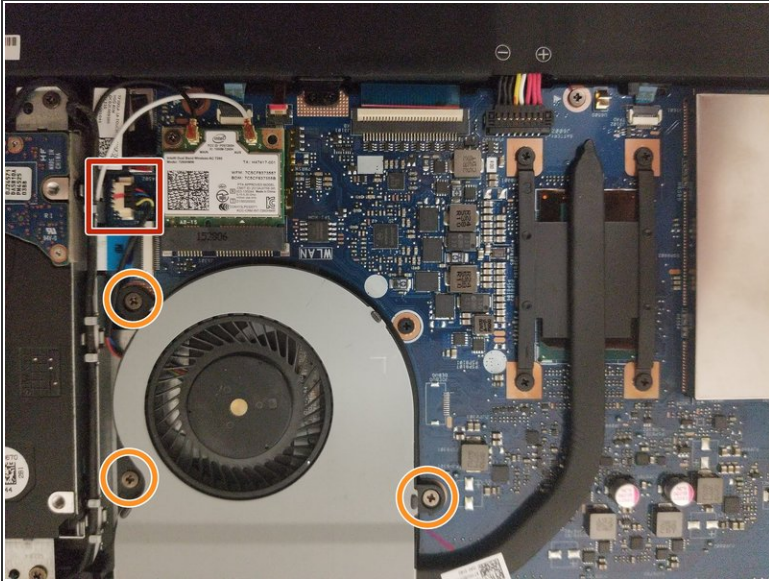
## Step 1 — Motherboard



- Place laptop upside down.
- Use a Phillips #0 screwdriver to remove the ten 1 cm case screws from the bottom of the laptop.

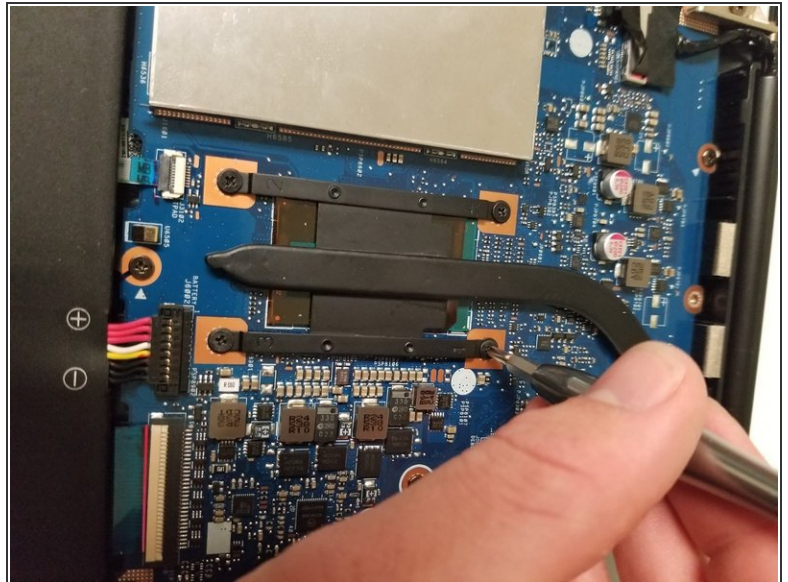
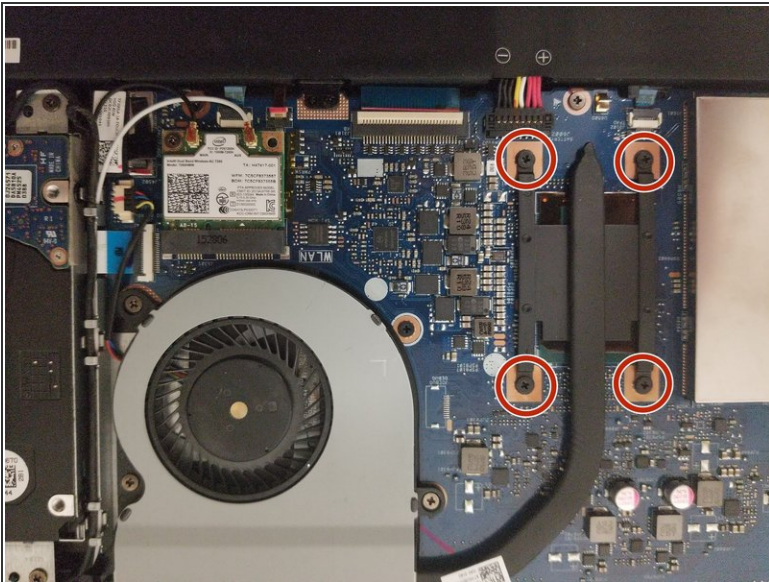


## Step 2



- Disconnect the CPU fan by carefully pulling out the small black connector(plug) located in the corner (redbox)
- Use a Phillips #0 screwdriver to remove the three 4 mm screws that secure the fan.

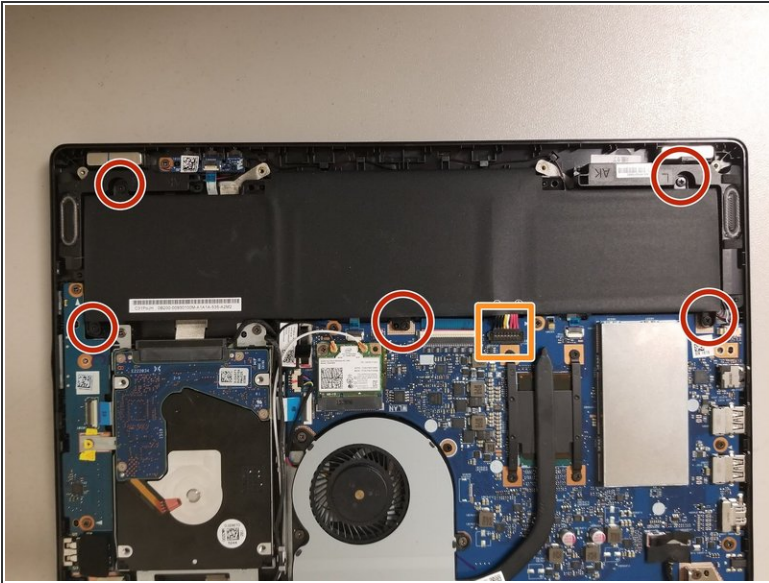
## Step 3



- Use a Phillips #0 screwdriver to remove the four 3 mm screws that secure the heat sink.

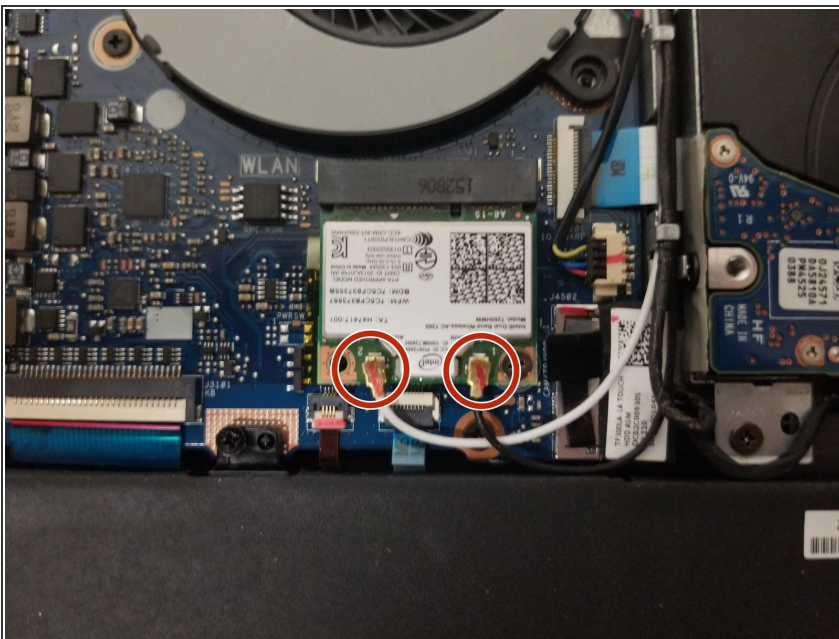


## Step 4



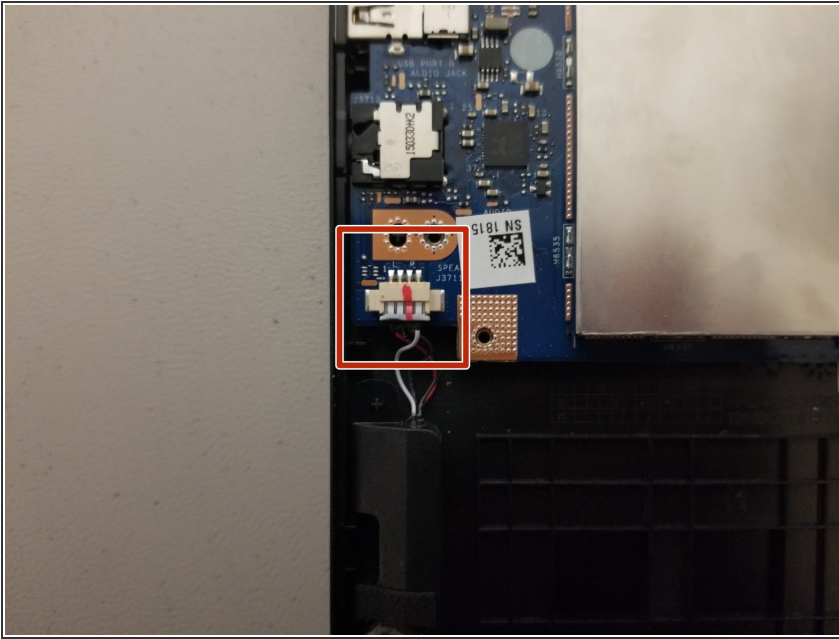
- Use a Phillips #0 screwdriver to unscrew the five 5 mm screws that secure the battery.
- Disconnect the battery's bundled cable connector and lift the battery up and out of the laptop.

## Step 5



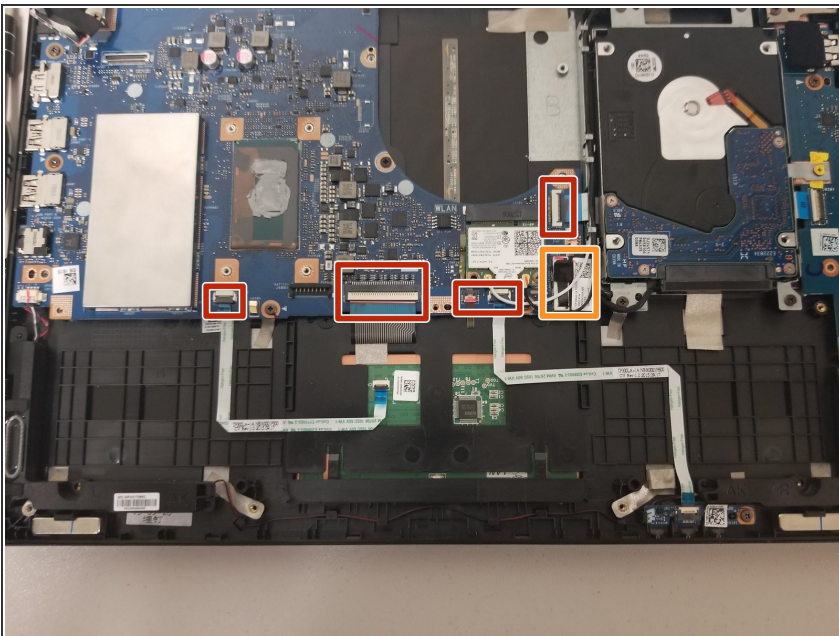
- Disconnect the WiFi antennae by gently pulling up at each antenna's connector. Use a spudger to help lift each antenna free from the WiFi card if needed.

## Step 6



- Speaker Data Connector.
- Gently pry out.

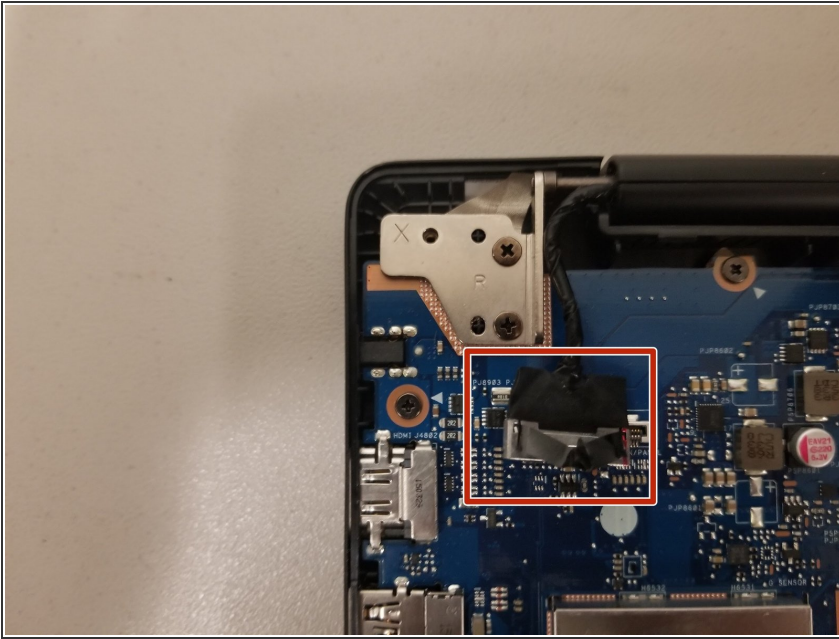
## Step 7



- Pull up the ZIF connector tabs and then pull out the ribbon cables.
- For the orange boxes, you pull the little black tab up to remove connector.
- ⓘ A little extra force might need to be used for this step.

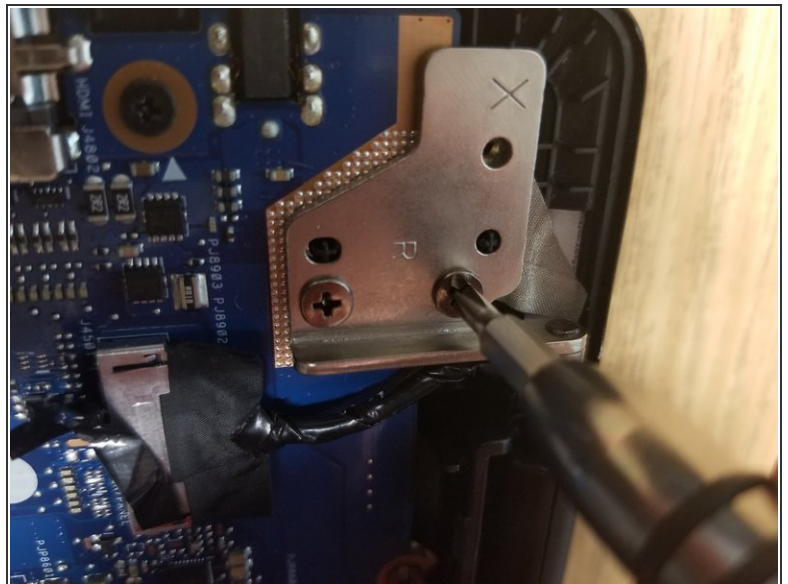
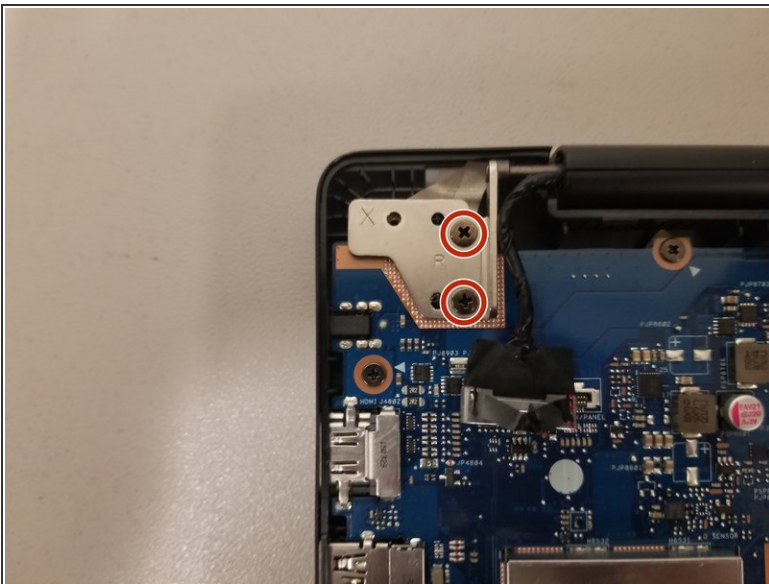


## Step 8



- Display Connector.
- Pull tab, and pull up.

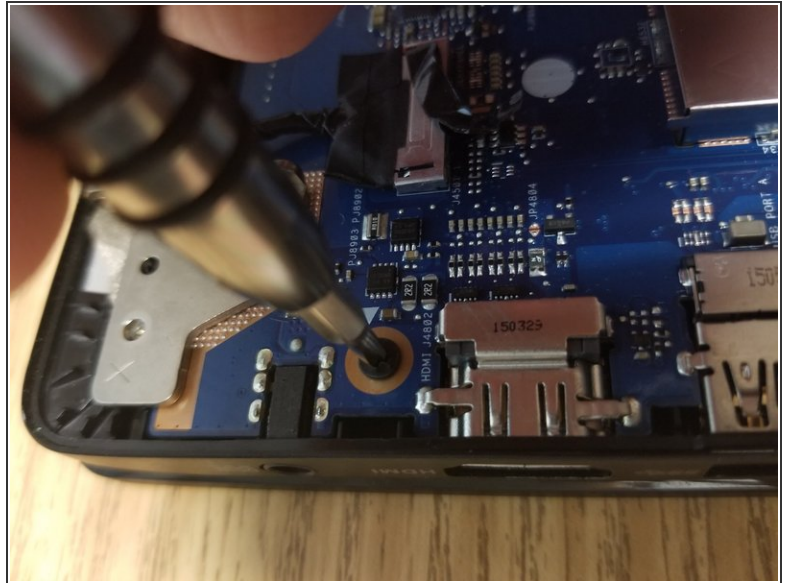
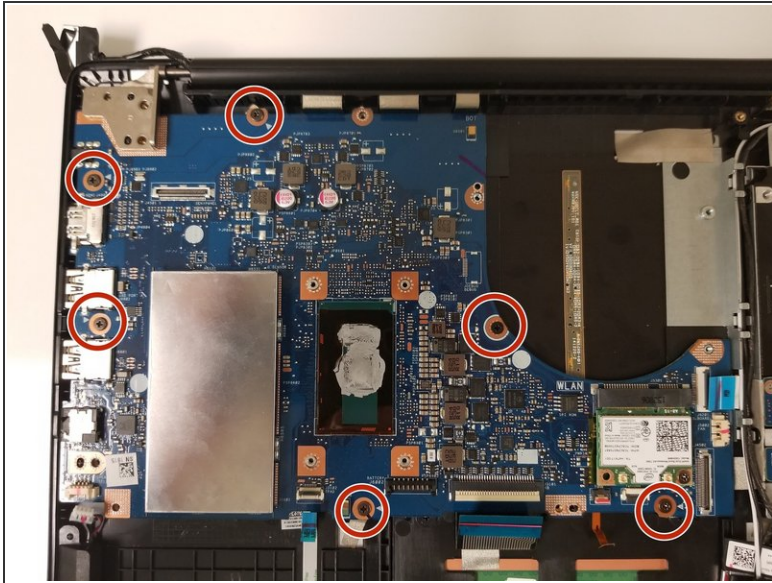
## Step 9



- Unscrew the two 6 mm screws.
- After removing the screws, lift the hinge up slightly to give clearance to the motherboard.
- ⓘ Some force is required to lift the metal hinge support up. To lift, pull up and rotate as you're pulling up.

This document was generated on 2020-11-28 06:13:47 AM (MST).

## Step 10



- Remove the six 4 mm screws.
- Gently pick up the motherboard without applying any unnecessary force.

To reassemble your device, follow these instructions in reverse order.