



# Gateway NV55S Screen Replacement

This guide teaches you how to replace the screen in a Gateway NV55S series laptop.

Written By: Joseph Sctbunio



## TOOLS:

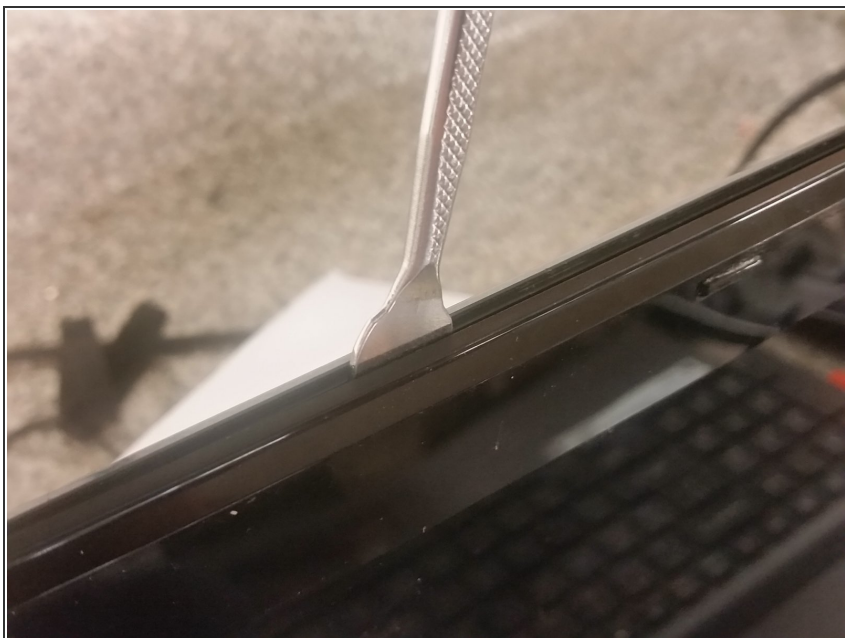
- [Pro Tech Toolkit](#) (1)

## Step 1 — Remove screw covers & screws



- At both sides of the bottom of the screen, there are screw covers. Use a flathead screwdriver to remove them.
- Behind each of them will be a screw. Unscrew each screw.

## Step 2 — Remove LCD Bezel




- Use a spudger to remove the bezel.

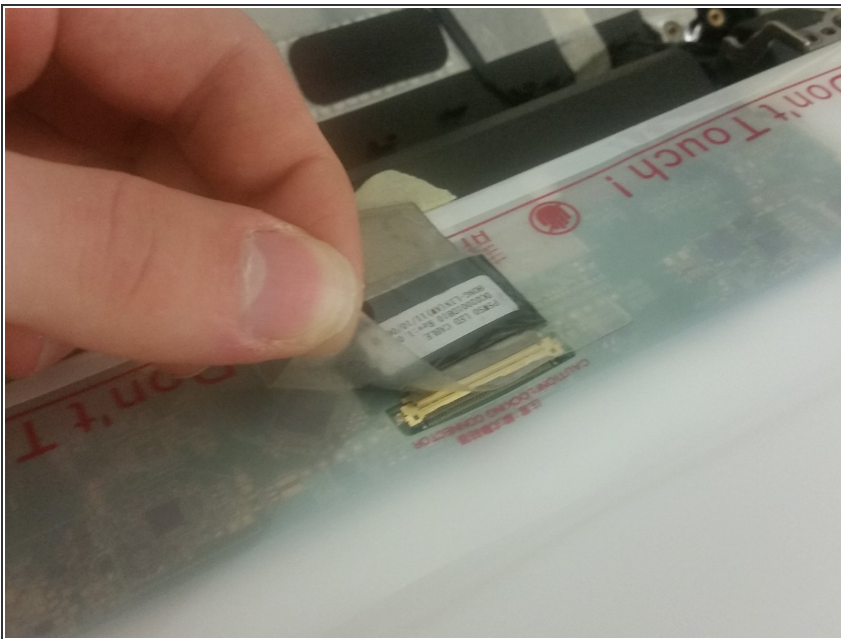
### Step 3 — Remove lid



- At each corner of the LCD will be one screw to remove. Remove each screw, disconnect the webcam (if applicable), and pull back on the lid.

 Don't forget to disconnect the webcam before pulling the lid back!

### Step 4 — Remove LCD cable



- Separate all of the tape from the back of the LCD screen, and then pull straight back on the cable to remove it from the LCD.

## Step 5 — Remove LCD



- On each side of the LCD, there are three screws holding it. Remove all of them. You're done!

To reassemble your device, follow these instructions in reverse order.