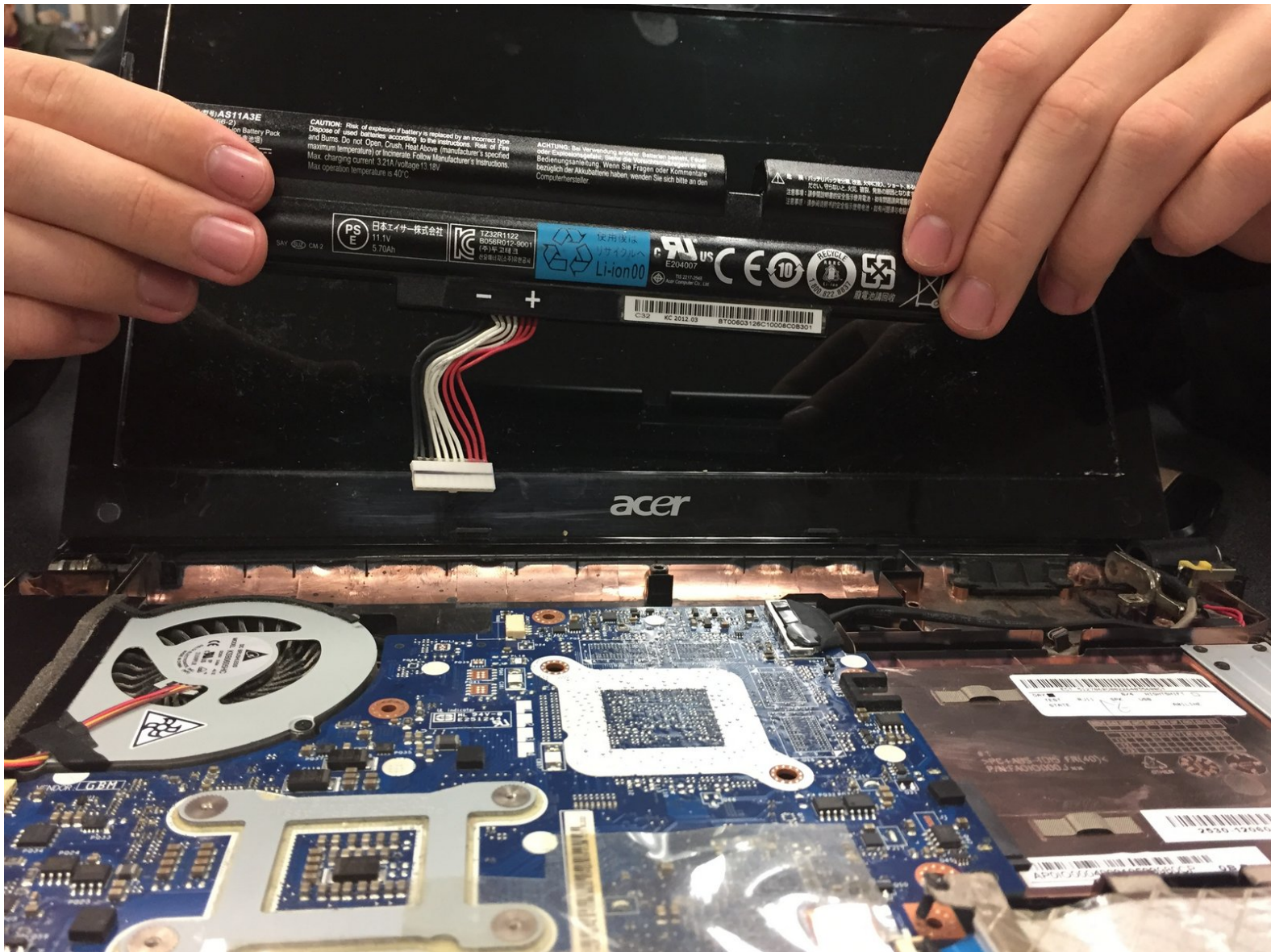




# Acer Aspire TimelineX 4830T-6682 Battery Replacement

Remove the battery in order to replace

Written By: Rachel Wagner

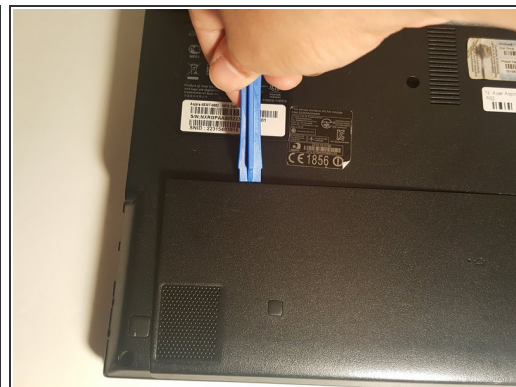
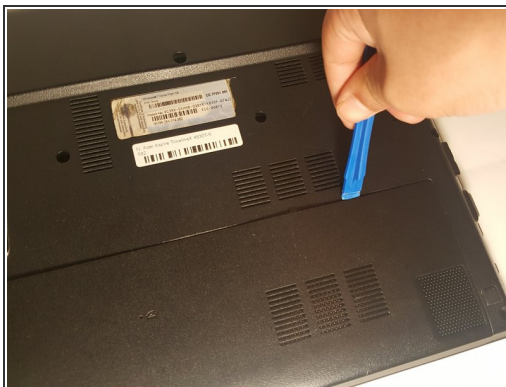




## TOOLS:

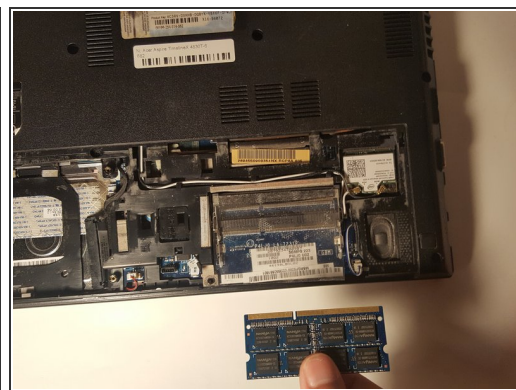
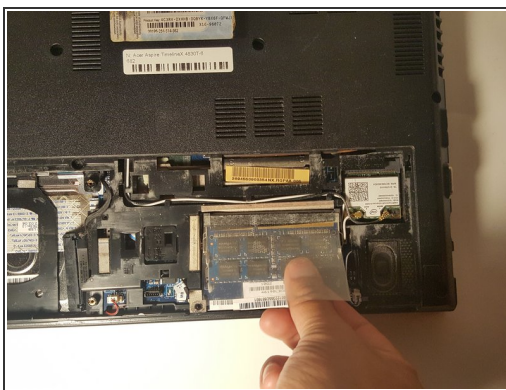
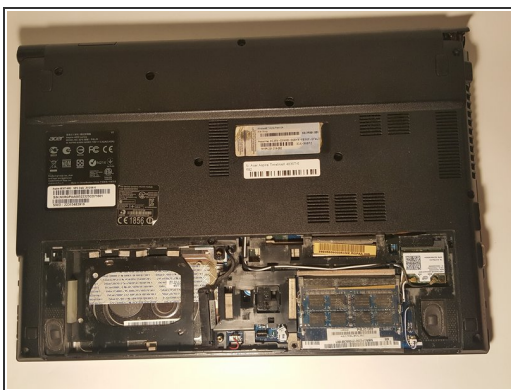
- [Phillips #0 Screwdriver](#) (1)
- [Tweezers](#) (1)
- [iFixit Opening Tools](#) (1)
- [Spudger](#) (1)

## Step 1 — Lower Back Panel



- Remove the single screw with a Phillips #0 screwdriver.
- Use a plastic opening tool on the upper part of the panel to remove it and access the RAM.
- ⓘ The other way to remove the panel is by sliding it away from the laptop. The difficulty of sliding it depends on the condition of your laptop.

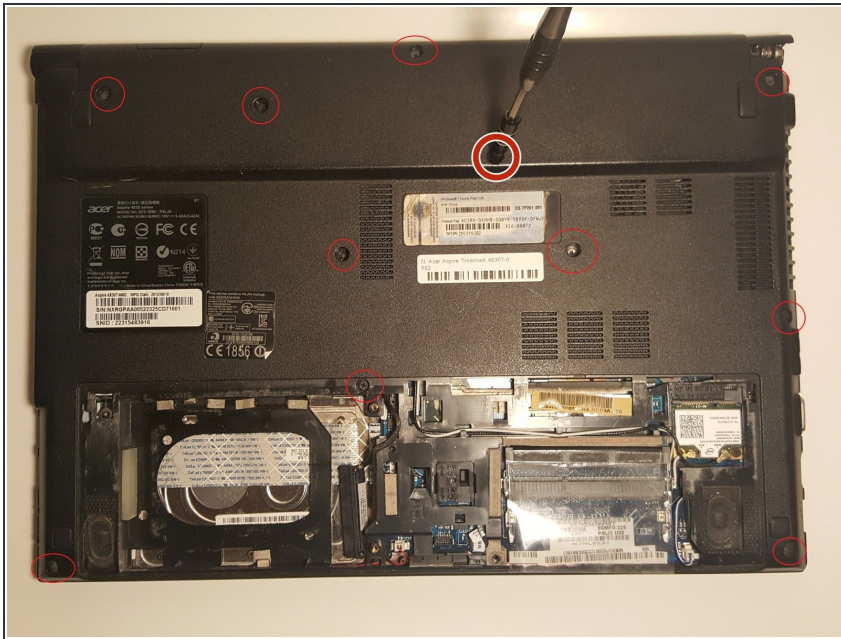
## Step 2 — RAM



- After the panel has been removed, locate the RAM. It should be on the lower right.
- There are pins around the RAM that need to be pulled back. After the pins are removed, pull the RAM chip towards you to remove it.

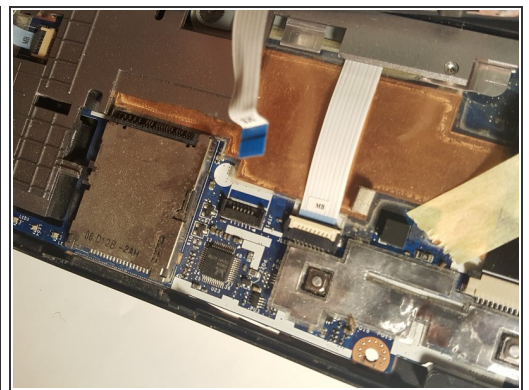
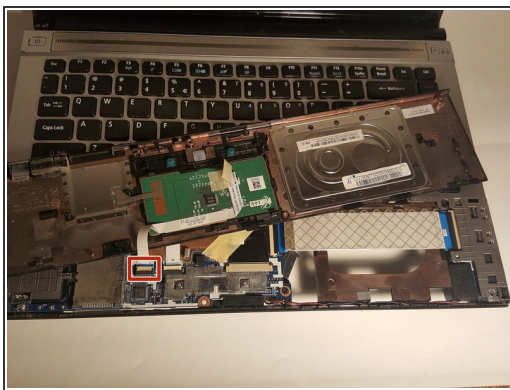


## Step 3 — Keyboard



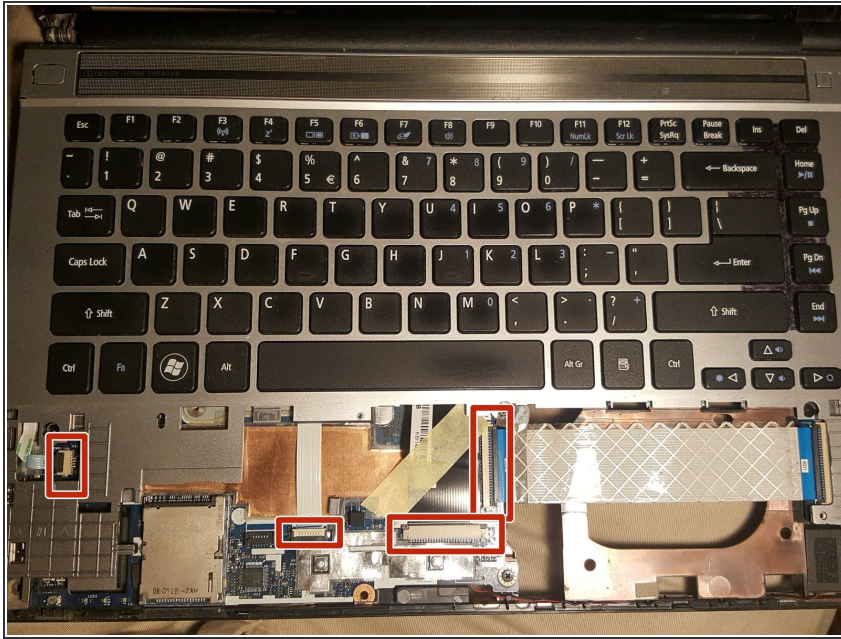
- Remove the eleven screws that hold that back panel to the laptop using a J0 Phillips screwdriver bit.

## Step 4



- Place the laptop in the upright position, the lower front touchpad panel should be easily detached at this point.
- Remove the lower front touchpad panel by using an angled tweezers to disconnect the only wired tape connected to the motherboard.

## Step 5



- Next, disconnect the 4 wired tapes of the keyboard from the motherboard just like we did with the lower front touchpad panel.

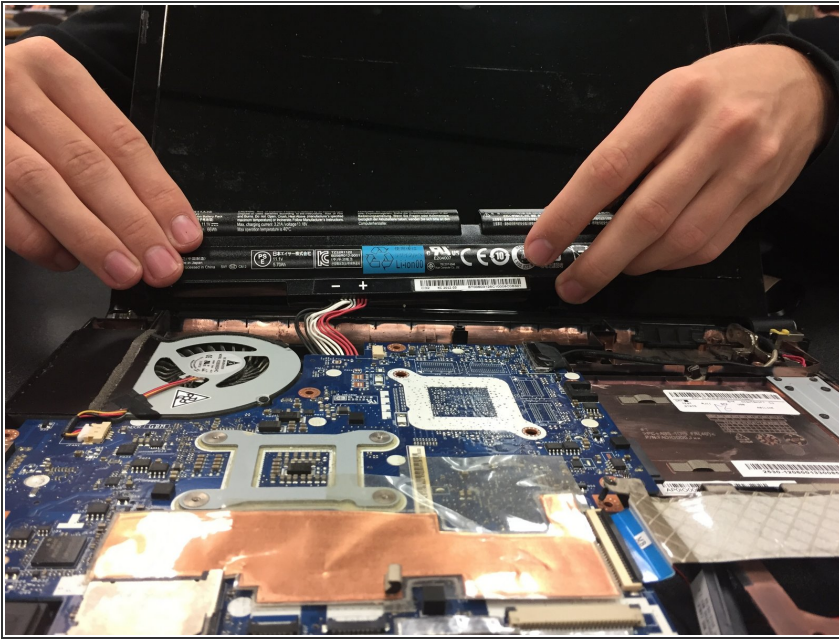
## Step 6



- Finally, using an opening tool, gently pry along the edge of the keyboard to separate it from the laptop.

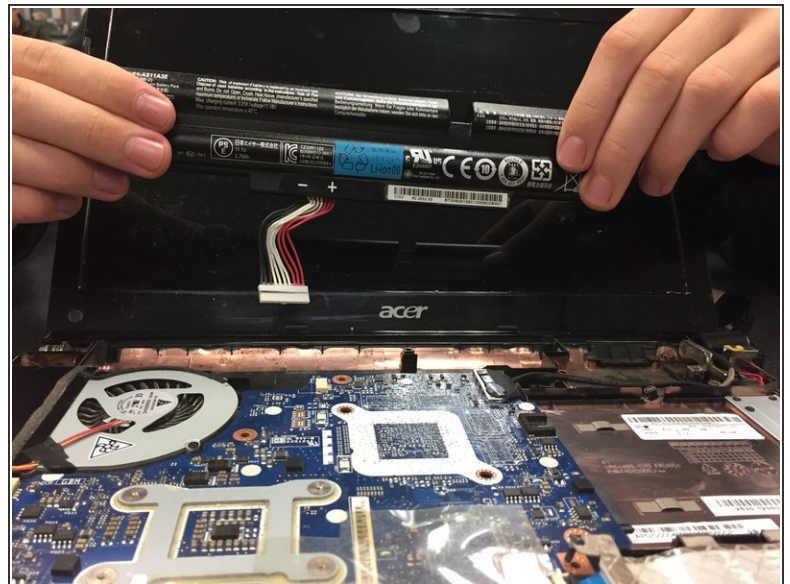


## Step 7 — Battery



- The battery will be on the side closest to the screen.
- Gently lift it out. It will still be attached by white, red, and black wires.

## Step 8



- Pull the white plug, it should easily detach.
- Remove the battery from the device.

To reassemble your device, follow these instructions in reverse order. When reattaching the back panel, make sure to pry out the pwr on/off slide switch near the center. The back panel switches it off when closing, and there is no other way to avoid it.