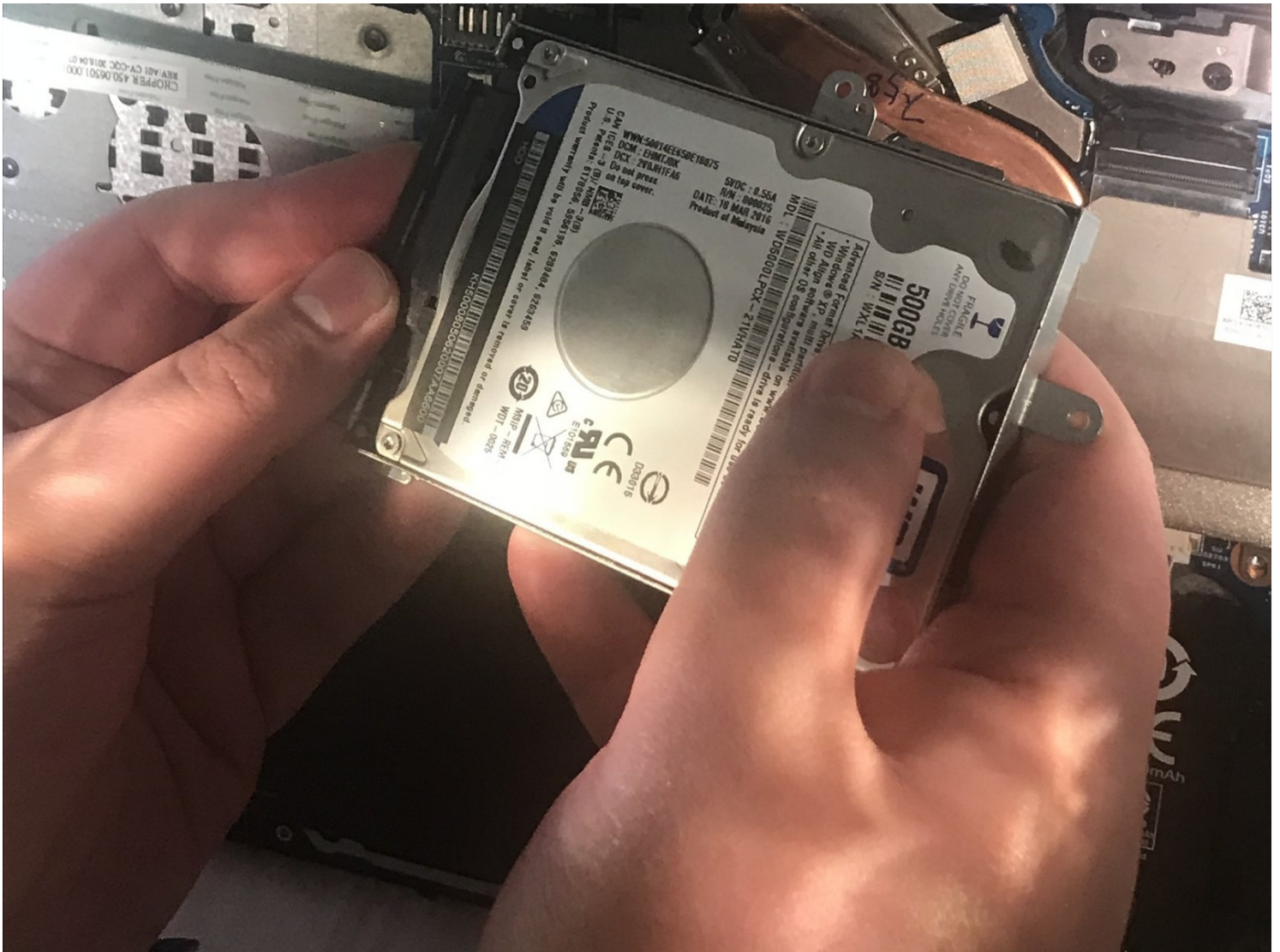




Replacement

Here is the guide to help you locate the Hard...

Written By: Jacqueline Englehardt



INTRODUCTION

Here is the guide to help you locate the Hard Drive to begin the replacement. Tools you will need to remove the screws is a PH0 sized Phillips screwdriver, anti-static wrist strap, and a metal spudger.

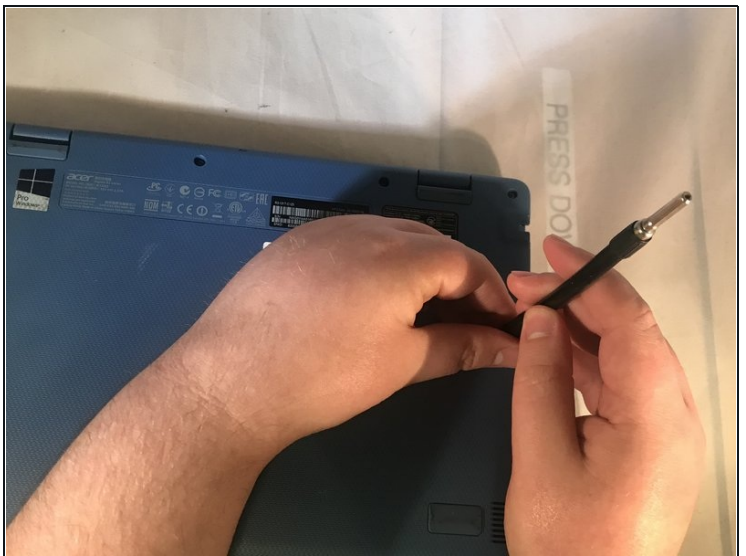
TOOLS:

64 Bit Driver Kit (1)
Metal Spudger (1)
Anti-Static Wrist Strap (1)

PARTS:

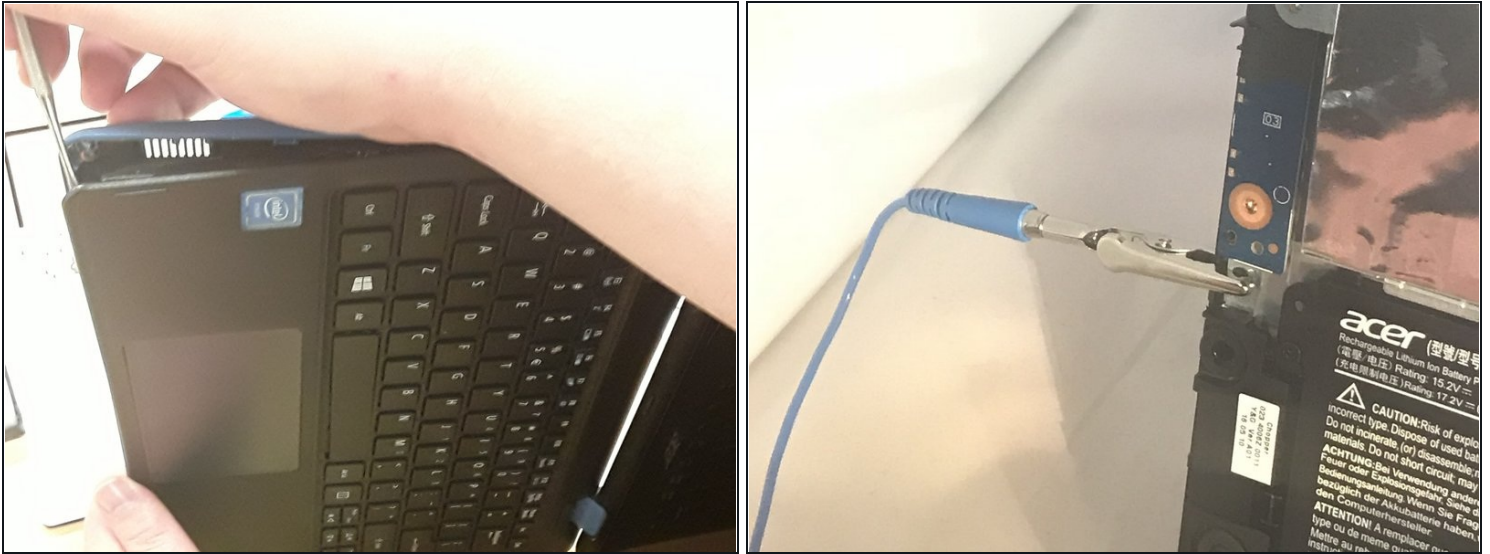
Crucial MX500 1 TB SSD (1)
Crucial MX500 250 GB SSD (1)
Crucial MX500 500 GB SSD (1)
2 TB SSD (1)

Step 1 — Hard drive



- Flip the laptop over on its front, so that the back is facing up.
- Unscrew the twelve 19.05 mm PH#0 screws.

Step 2

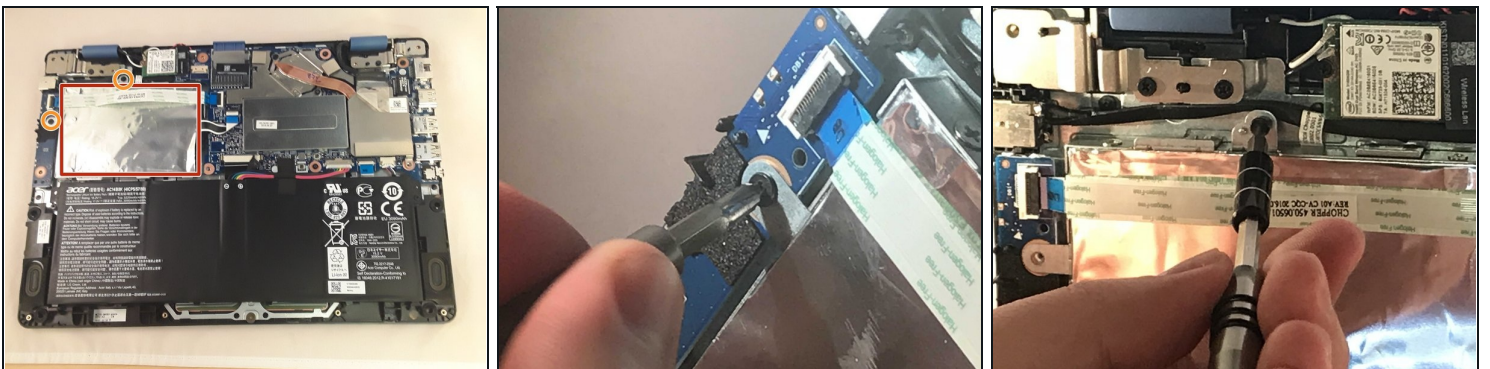


- At the left front corner of the laptop, under the intel sticker, press the sharp end of a metal spudger between the keyboard and the back cover to pry it apart.

⚠ It is important to ground yourself to avoid static.

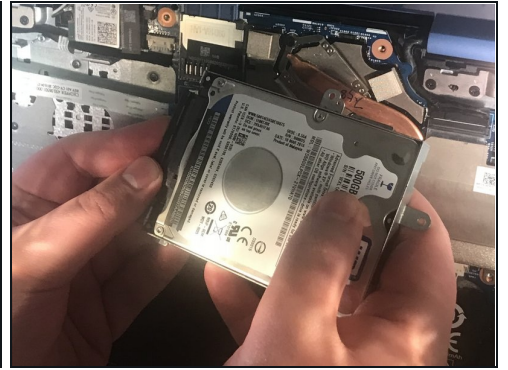
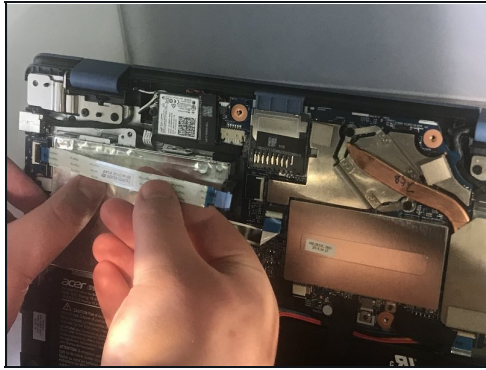
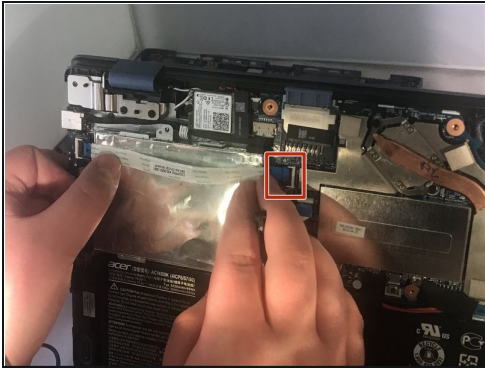
- Put on an [anti-static wrist strap](#) and connect the metal clip at the other end to any piece of metal you can identify on the laptop.

Step 3



- Locate the big silver aluminum square on the left side of the back of the laptop. This is the hard drive to the computer.
- Remove the two 12.7 mm PH#0 screws.

Step 4



- Lift and disconnect right flap of the white ribbon that runs across the hard Drive.
 - Detach the cable that is located right where you disconnected the ribbon.
 - Remove the Hard Drive
-

To reassemble your device, follow these instructions in reverse order.