



Toshiba Satellite P55W-C5316 Hard Drive Replacement

The hard drive stores the data on your laptop. If it becomes corrupted or damaged, it will need to be replaced.

Written By: Alec Bonnell



INTRODUCTION

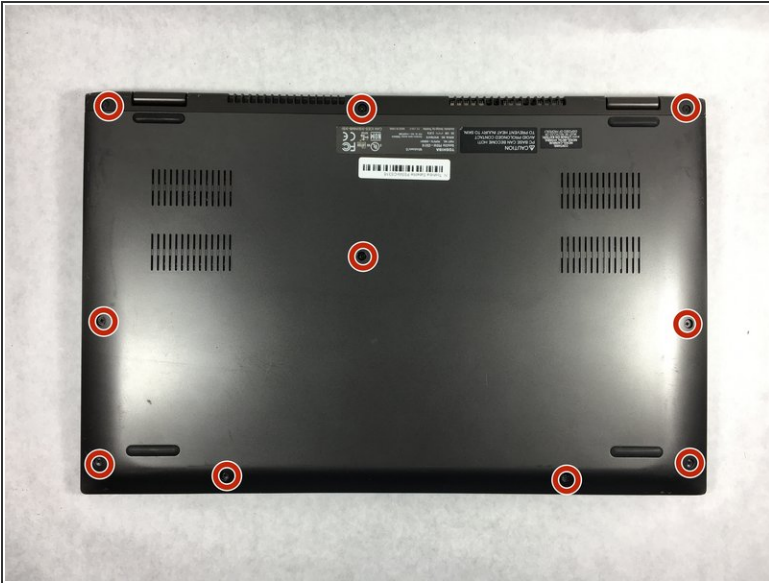
This hard drive replacement guide is fairly straightforward. The hard drive is inserted into the laptop without any screws and held in place by a rubbery bumper. Do not worry about being somewhat forceful with the opening tools since this bumper will protect the hard drive.




TOOLS:

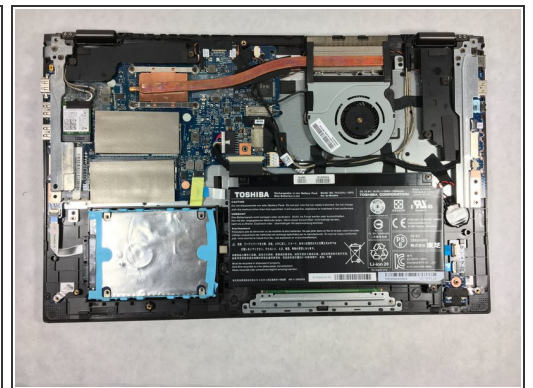
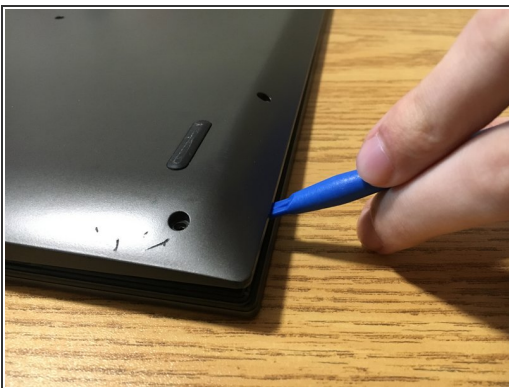
- [iFixit Opening Tools](#) (1)
 - [Phillips #1 Screwdriver](#) (1)
-



Step 1 — Back Panel



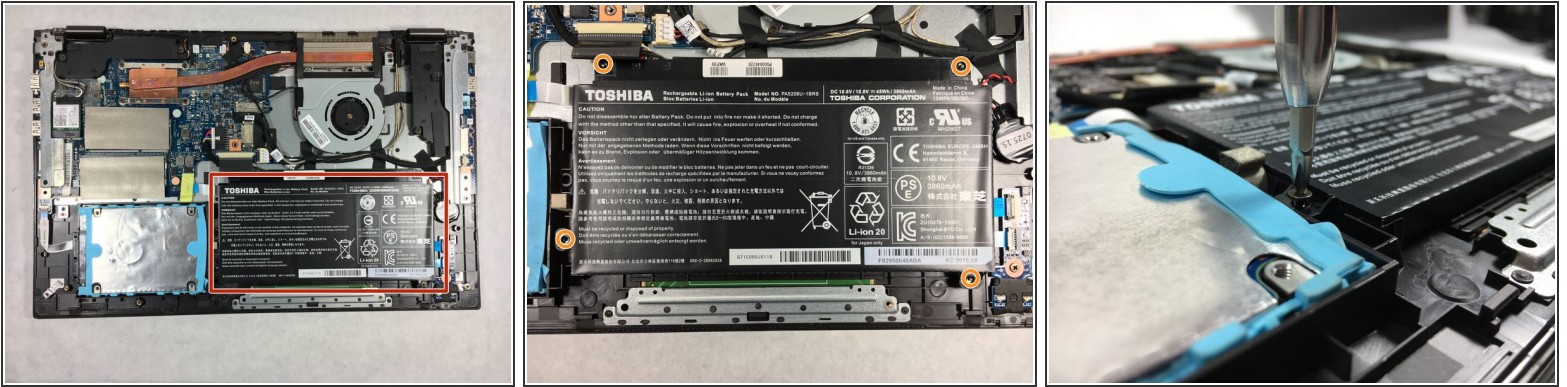
-  To prevent injury, ensure the laptop is powered off before starting your work.
- Unscrew the .3mm Phillips head screws on the back panel using the PH1 screwdriver.

Step 2



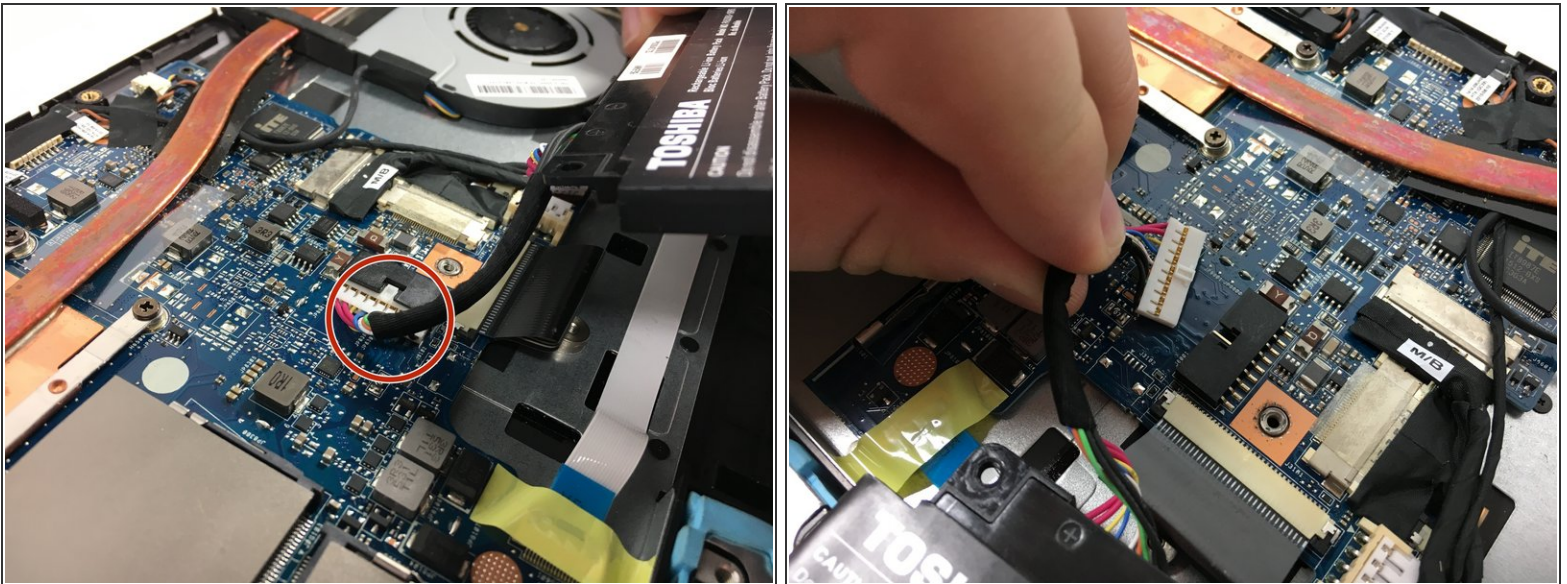
-  Be careful to not crack the panel where the USB and power cord ports are.
- Insert the opening tool in between the back panel and the laptop to pry it open.
-  The back panel is magnetically attached at the front of the laptop so you may have to move the opening tool along the length of the panel.
- Lift the panel from the front off of the laptop.

Step 3 — Battery



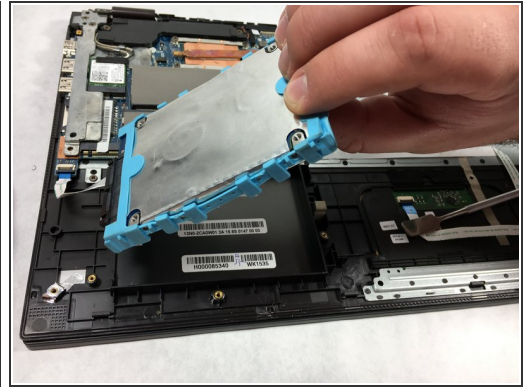
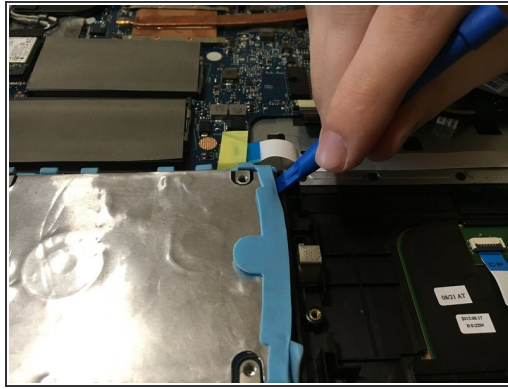
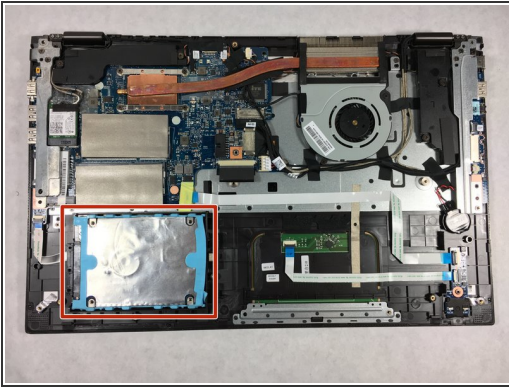
- The battery is located in the bottom right corner of the laptop.
- Remove the four .5mm Phillips head screws on the battery using the PH1 screwdriver.

Step 4



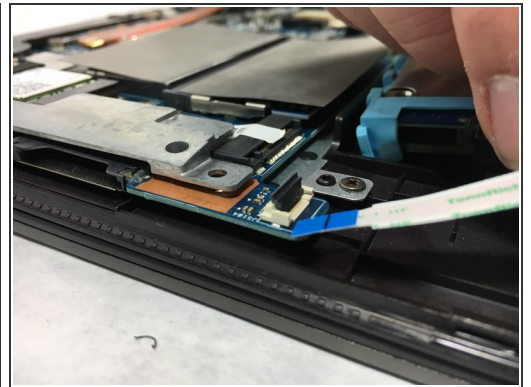
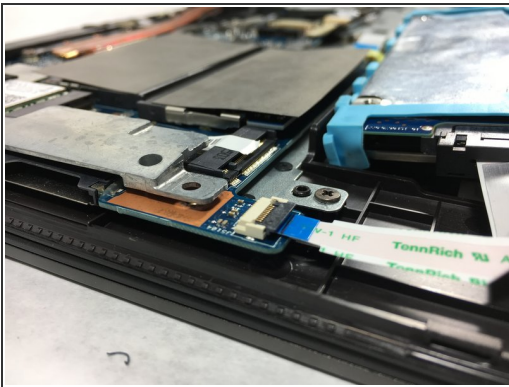
- Do not tug on the cord or battery. Instead, pull evenly on the connector.
- Lift the battery and gently pull out the bundled cable connector.


Step 5 — Hard Drive



- Insert the opening tool between the hard drive and the laptop on the right hand side.
- Gently lift the hard drive from the laptop.

Step 6



 Do not pull on the ZIF connector that connects the hard drive to the laptop.

- Lift the black clip on the end of the ZIF connector.
- Gently remove the cable from the connector.

To reassemble your device, follow these instructions in reverse order.