



Toshiba Satellite P55W-C5316 Battery Replacement

The battery is an essential component for the laptop. It powers the device when it is not plugged into a power outlet.

Written By: Alec Bonnell



INTRODUCTION

This guide about removing the battery is fairly straightforward. Be careful to not yank on the connector between the battery and the laptop. Also, make sure that the laptop is turned off before attempting this guide.



TOOLS:

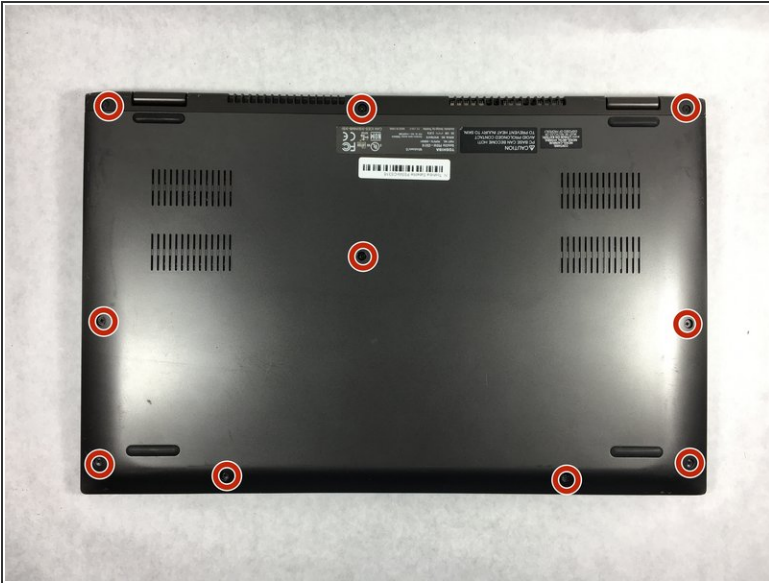
- [iFixit Opening Tools](#) (1)
- [Phillips #1 Screwdriver](#) (1)



PARTS:

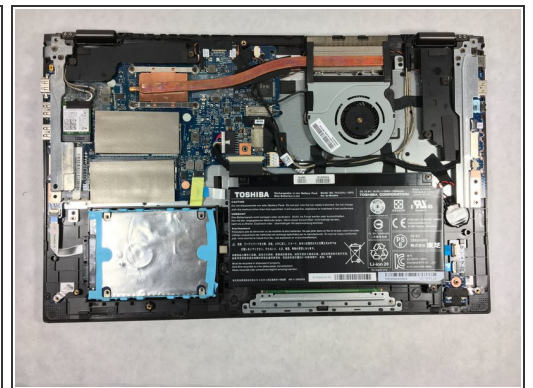
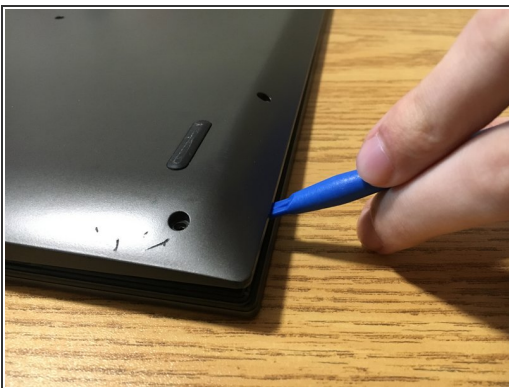
- [Toshiba PA5208U-1BRS Replacement Laptop Battery](#) (1)

Step 1 — Back Panel



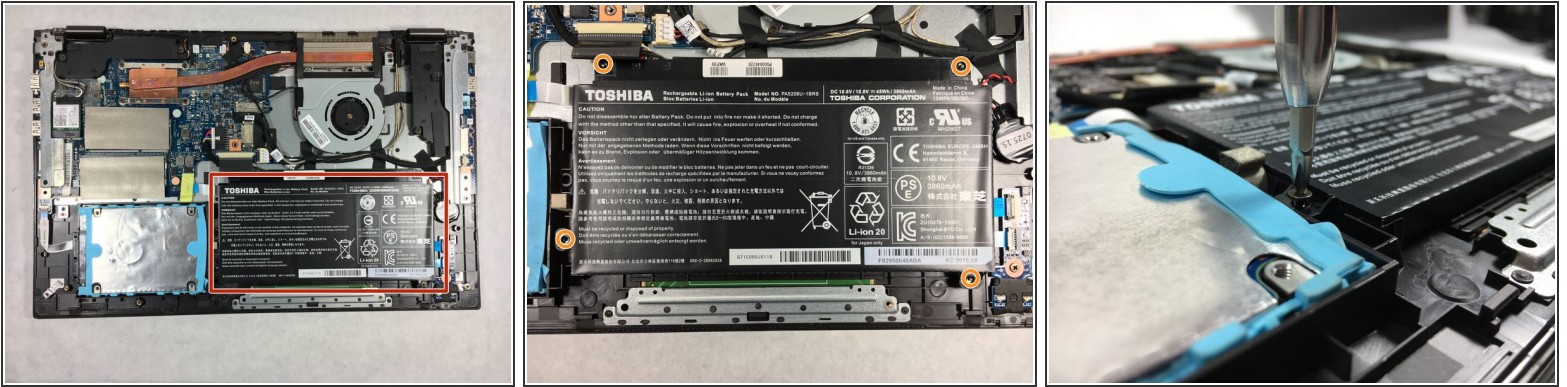
- i** To prevent injury, ensure the laptop is powered off before starting your work.
- Unscrew the .3mm Phillips head screws on the back panel using the PH1 screwdriver.

Step 2



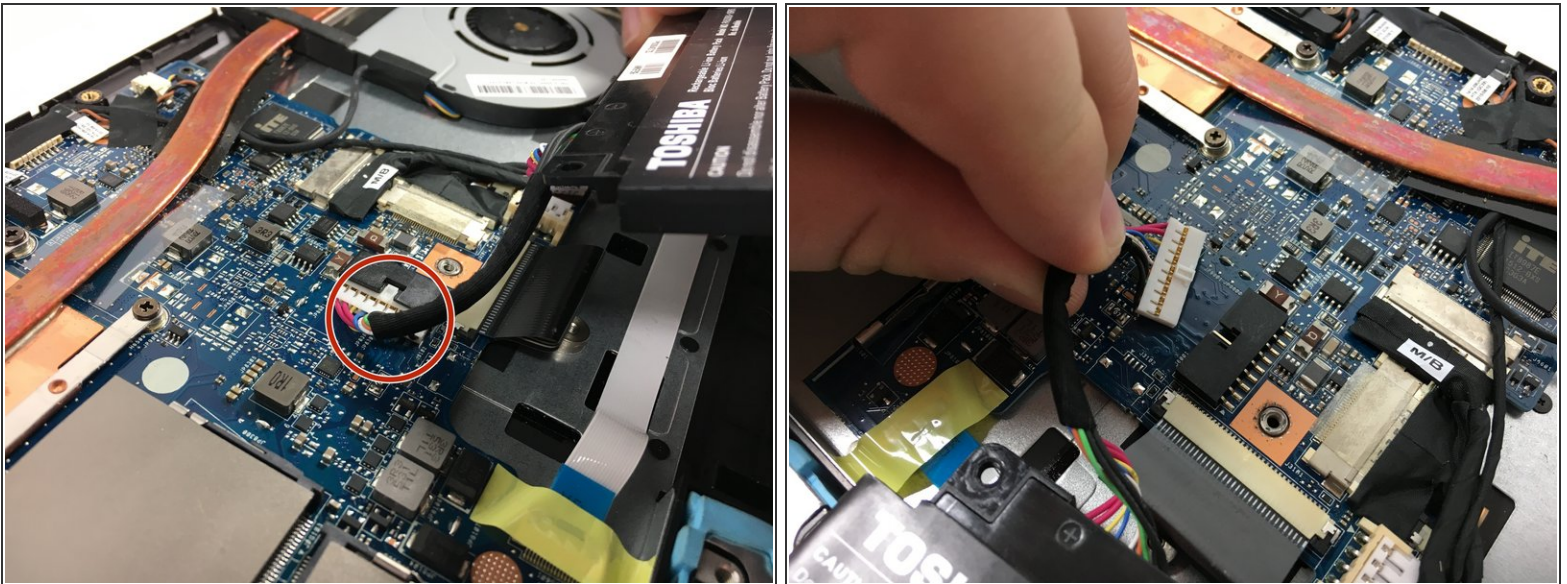
- !** Be careful to not crack the panel where the USB and power cord ports are.
- Insert the opening tool in between the back panel and the laptop to pry it open.
- i** The back panel is magnetically attached at the front of the laptop so you may have to move the opening tool along the length of the panel.
- Lift the panel from the front off of the laptop.

Step 3 — Battery



- The battery is located in the bottom right corner of the laptop.
- Remove the four .5mm Phillips head screws on the battery using the PH1 screwdriver.

Step 4



- Do not tug on the cord or battery. Instead, pull evenly on the connector.
- Lift the battery and gently pull out the bundled cable connector.

To reassemble your device, follow these instructions in reverse order.