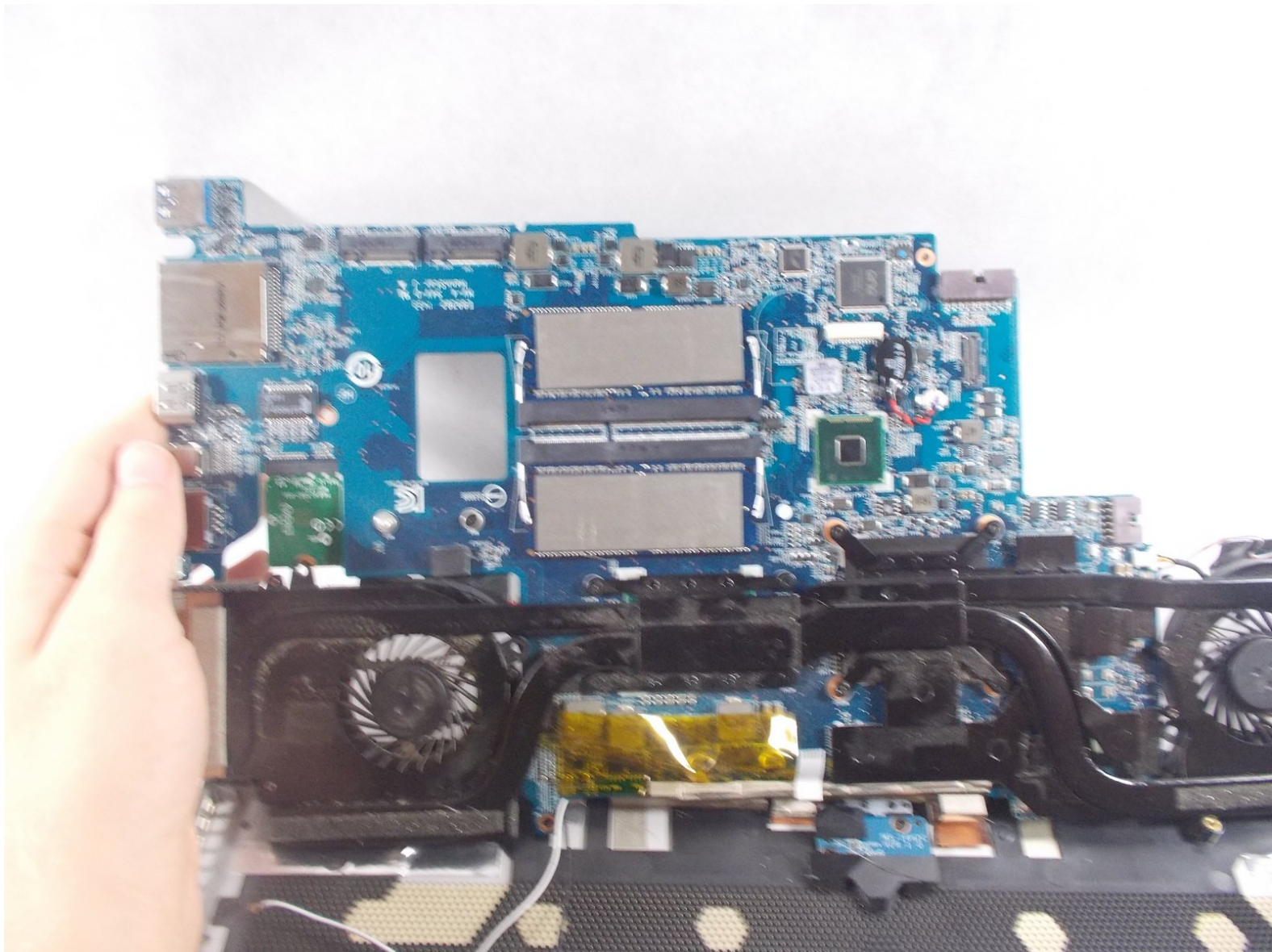




# MSI GS60 Ghost Pro 4K Gold Edition RAM Cards Replacement

This guide will show you how to replace the RAM cards in the MSI GS60 Ghost Pro 4K Gold Edition.

Written By: Stephen Felix



# INTRODUCTION

This guide will show you how to replace the RAM cards in your laptop.



## TOOLS:

- [iFixit Opening Tools](#) (1)
- [Phillips #0 Screwdriver](#) (1)



## PARTS:

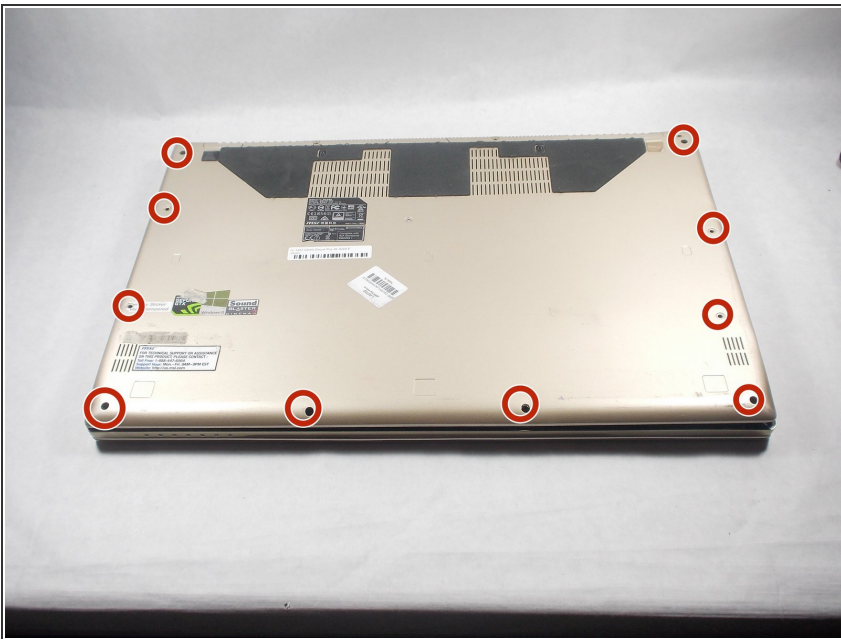
- [MSI \(Micro Star\) GS60 2QE Ghost Pro 4K Gold Edition](#) (1)

## Step 1 — Back Panel



- Place this device back panel facing up.

## Step 2



- Using the screwdriver, unscrew the highlighted 1.2mm Phillips head #0 screws which secure the back panel into place.



### Step 3



- Using the plastic opening tools, separate the back panel from the rest of the device.
- Do this by firmly pressing the head of the tool into the space between the back panel, and the rest of the device.

### Step 4 — Battery



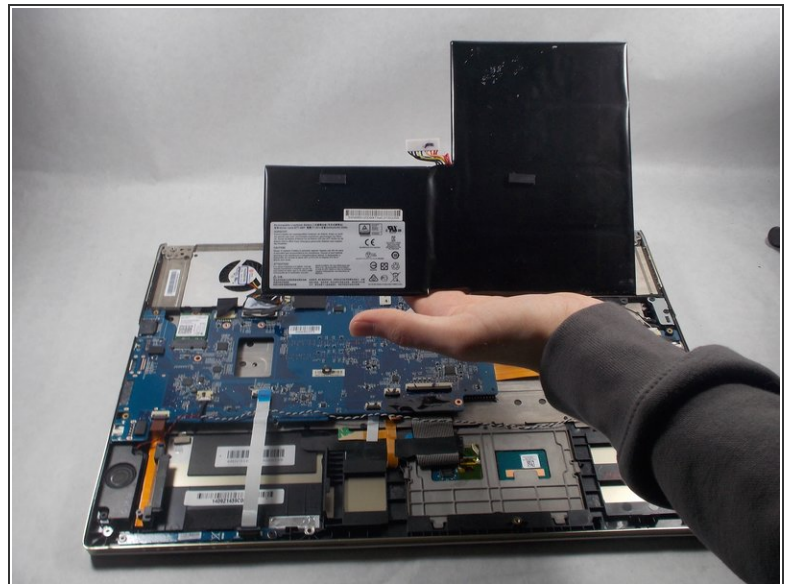
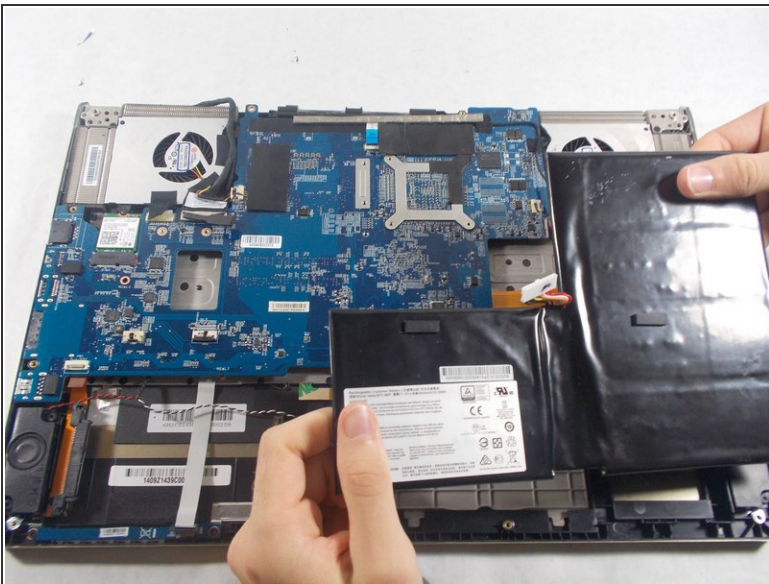
- Pull the back panel off.

## Step 5



- Notice the L-shaped battery in the lower right corner of the opened laptop.
- Disconnect the battery from the slot it is connected to. You'll need to push on the sides of the clip and pull.

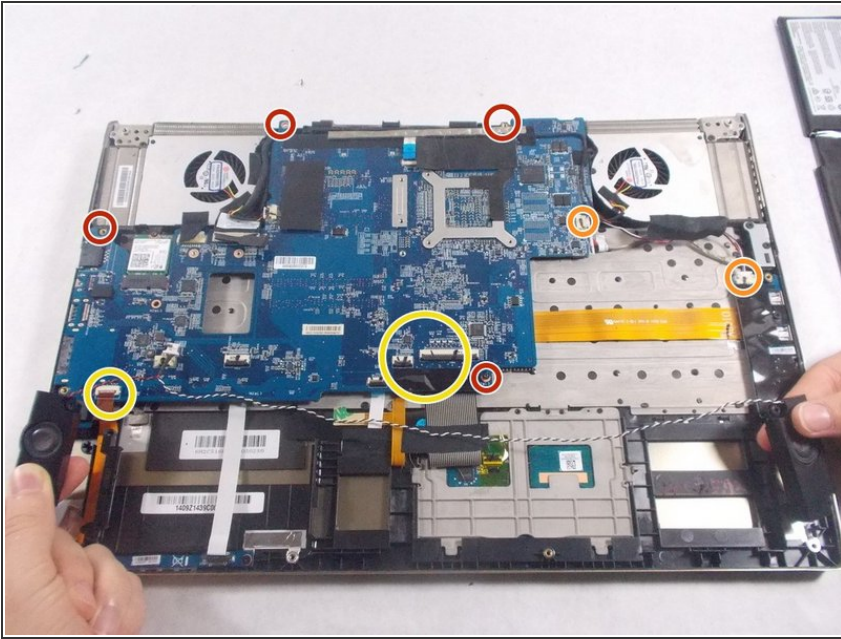
## Step 6



- Lift up the battery with your fingers and remove it from the laptop.
- Place the battery away from the laptop in a safe spot and insert your new battery by hooking it up to the slot you previously disconnected the old battery from.

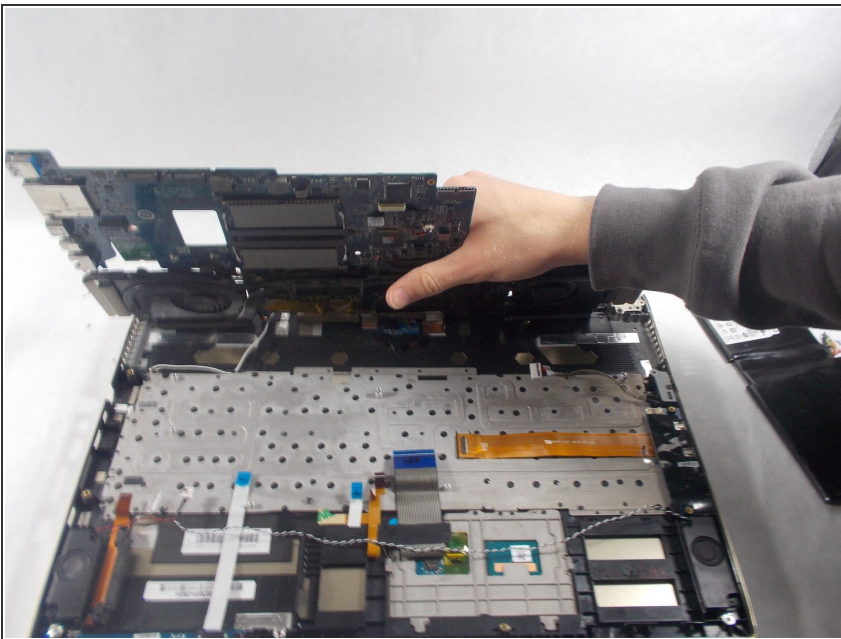


## Step 7 — MotherBoard



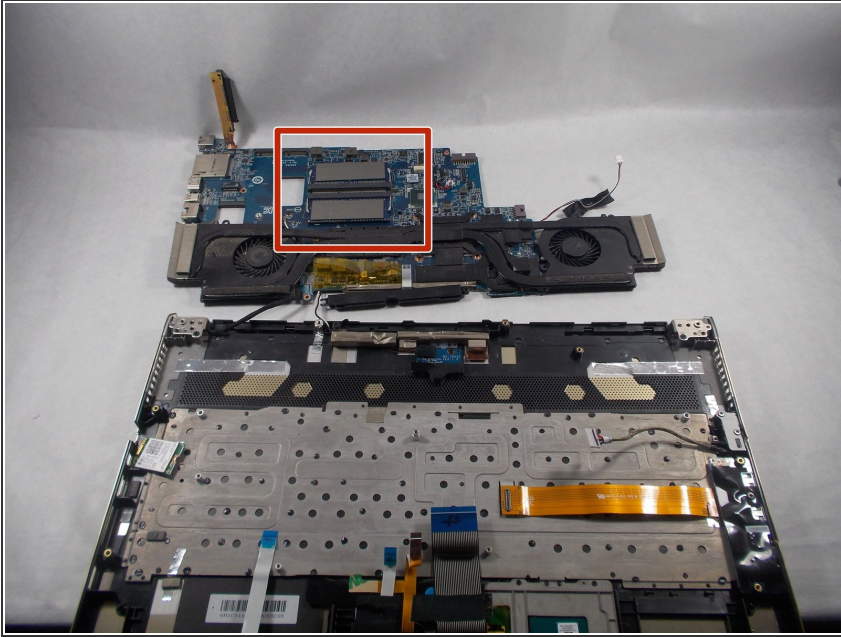
- Unscrew the 4 1.2mm Phillips #0 screws connecting the motherboard to the laptop case.
- Disconnect the wires connecting to the motherboard to the USB ports.
- Disconnect the ribbon cables connecting the keyboard, and track pad of the device.

## Step 8



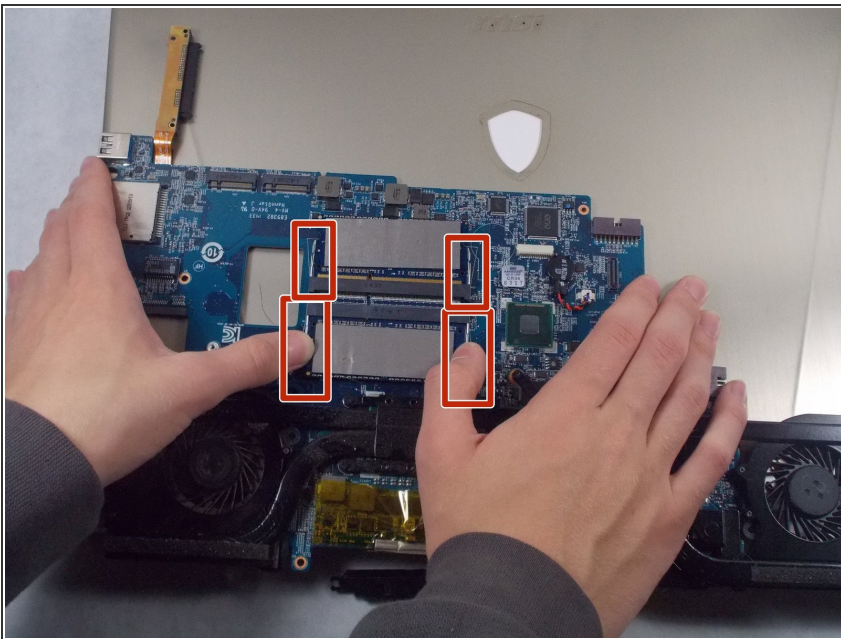
- Lift the motherboard up and out of the device casing.

## Step 9 — RAM Cards



- Lift the motherboard around.
- You'll notice the RAM cards located where the red box is shown.

## Step 10



- Pull the silver latches to release the RAM cards.
- Pull out the cards and replace them with new ones.

To reassemble your device, follow these instructions in reverse order.