



How to Fix LYCAON Bicycle Bell

This guide will show how to fix the spring inside the LYCAON Bicycle Bell button to restore sound.

Written By: Abel Semma



INTRODUCTION

Often a bike bell stops working because of gear issues. In this guide we will show you how to, in simple and easy to follow steps, fix gear related issues. The gears inside a bike bell can simply be adjusted to restore it back.



TOOLS:

- [Spudger](#) (1)
-

Step 1 — How to Fix LYCAON Bicycle Bell



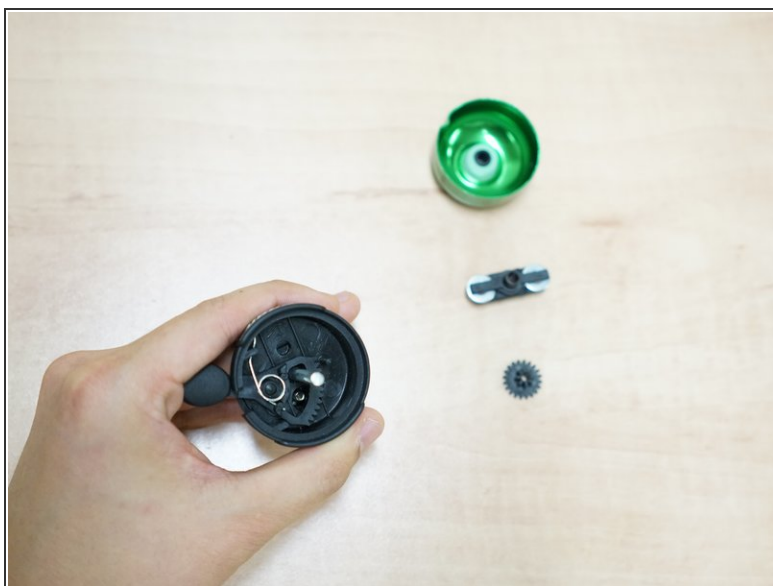
- Open up the hood by twisting the bell cap.

Step 2



- Take out the rotating bar.
- ⓘ The rotating bar is the rectangular plastic that has two metal bearings attached to it.

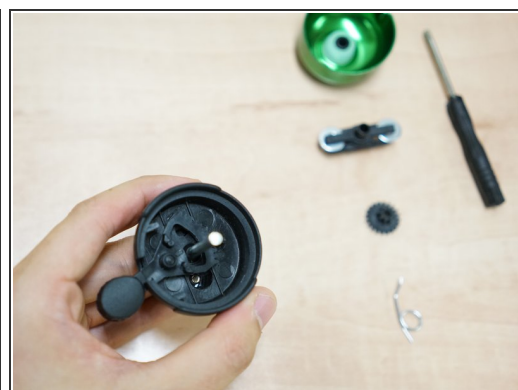
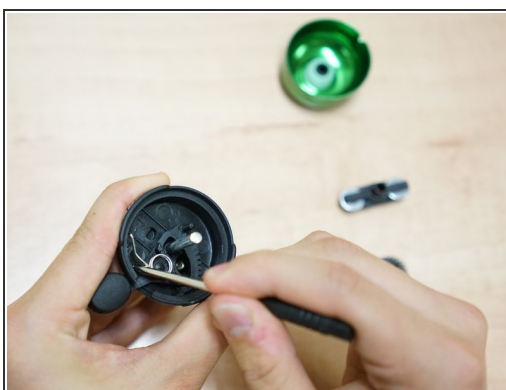
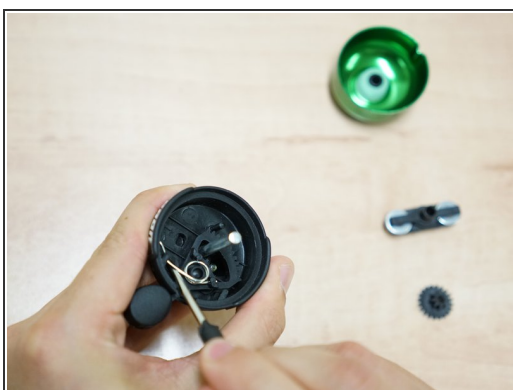
Step 3



- Take out the coat wheel.

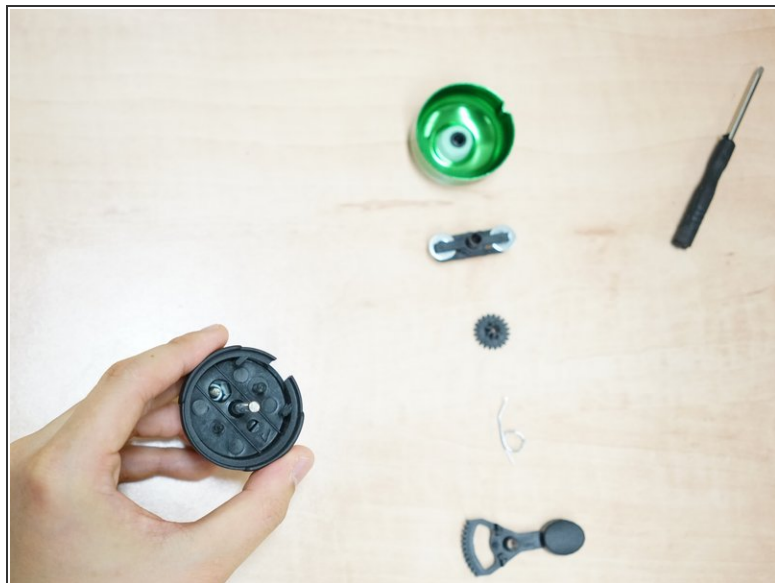
i The coat wheel is the black round plastic gear.

Step 4



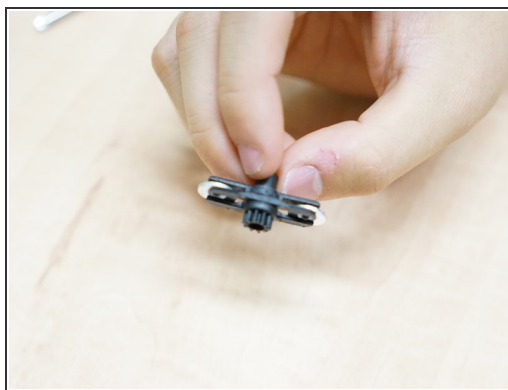
- Use a spudger or a small metal bar to detach the end of the spring from the plastic that hangs off the circular base.

Step 5



- Take out the arm.
- ⓘ The arm is the bell switch that is attached to a gear.

Step 6



- Put the components back to their original place in sequence, make sure the teeth of gears match.

Step 7



- Pull the trigger to test if the rotating bar spins properly.
- Put back the bell hood.

Step 8



- Test the bell.