



# Toshiba Satellite P55W-C5316 Back Panel Replacement

Prerequisite to Replacement Guides for this device.

Written By: Nicholas Caswell



## INTRODUCTION

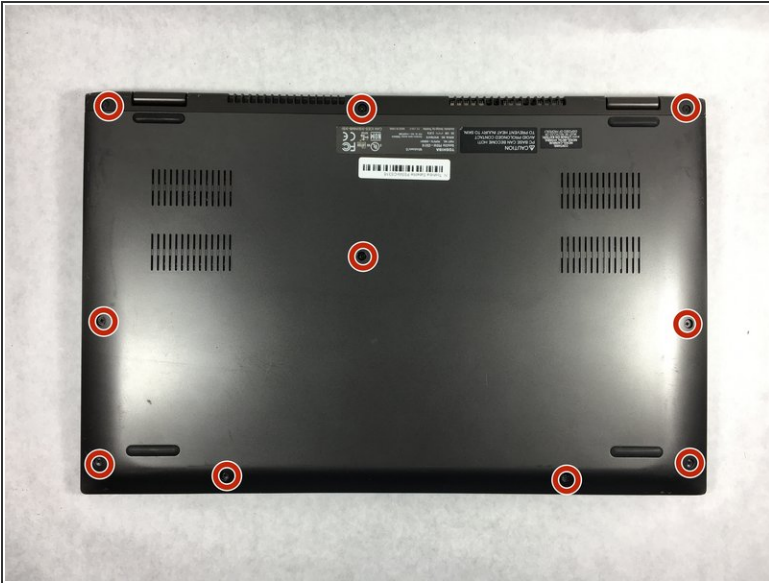
The back panel is the key piece to remove before any other internal components can be removed. This panel is magnetically attached at the front, so it may close after being opened. Also, make sure to look at the side of the panel where the connectors are to make sure you do not crack the panel while removing it. Follow the instructions to safely remove the back panel on the laptop.




### TOOLS:

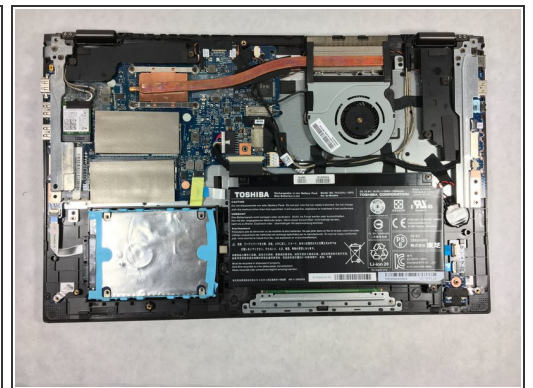
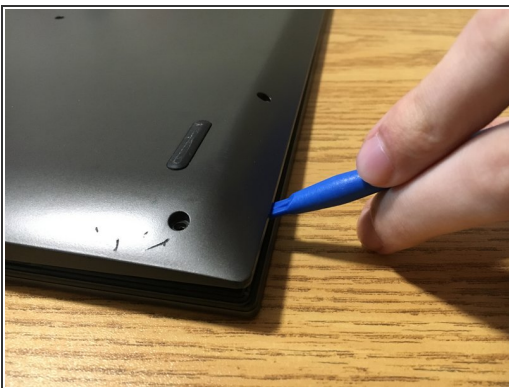
- [iFixit Opening Tools](#) (1)
  - [Phillips #1 Screwdriver](#) (1)
-



## Step 1 — Back Panel



-  To prevent injury, ensure the laptop is powered off before starting your work.
- Unscrew the .3mm Phillips head screws on the back panel using the PH1 screwdriver.

## Step 2



-  Be careful to not crack the panel where the USB and power cord ports are.
- Insert the opening tool in between the back panel and the laptop to pry it open.
-  The back panel is magnetically attached at the front of the laptop so you may have to move the opening tool along the length of the panel.
- Lift the panel from the front off of the laptop.

To reassemble your device, follow these instructions in reverse order.