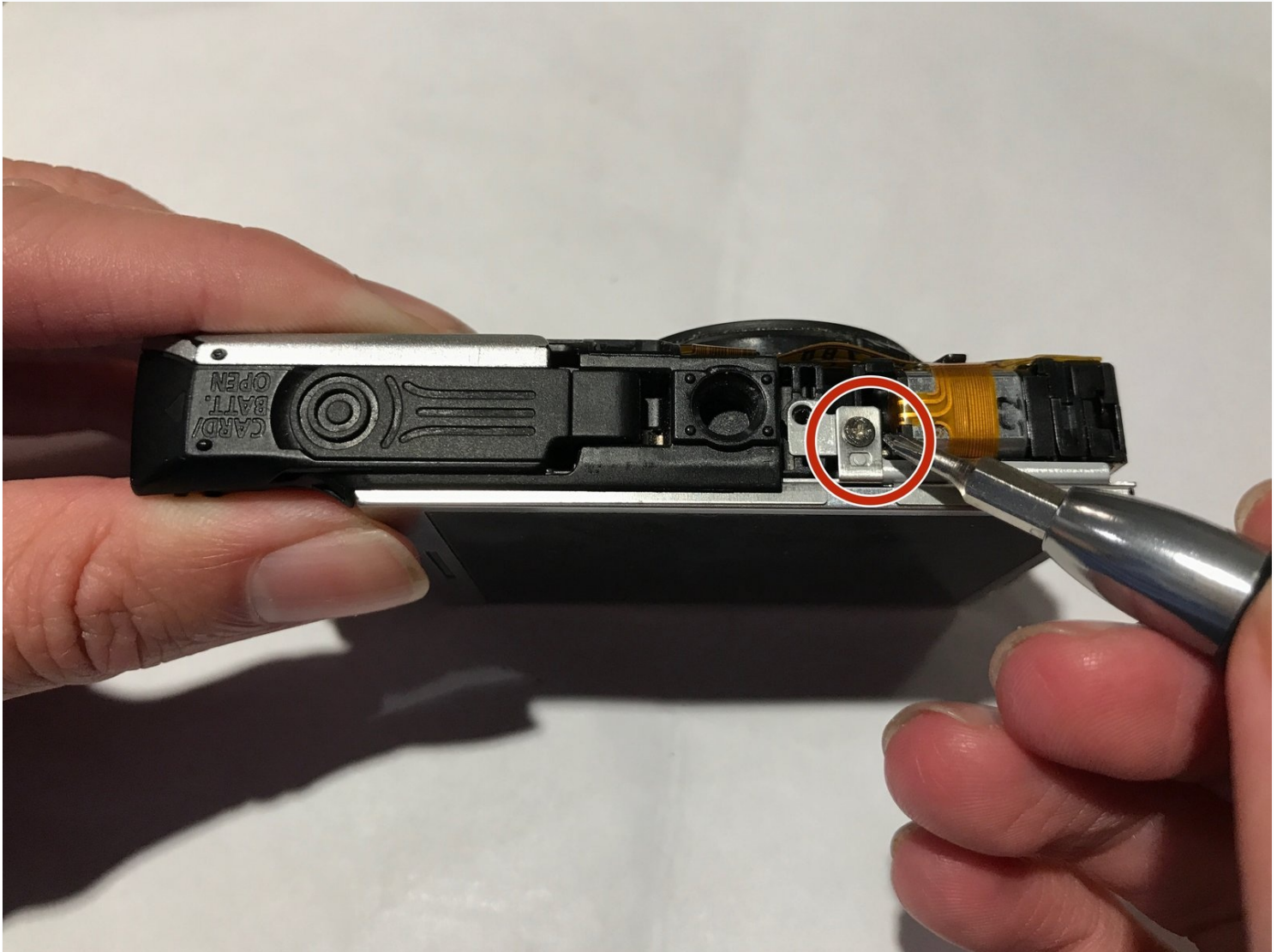




Canon Powershot A3300 IS LCD Display Replacement

This guide will show you how to replace a...

Written By: Kenny Chui



INTRODUCTION

This guide will show you how to replace a broken or malfunctioning LCD display.

TOOLS:

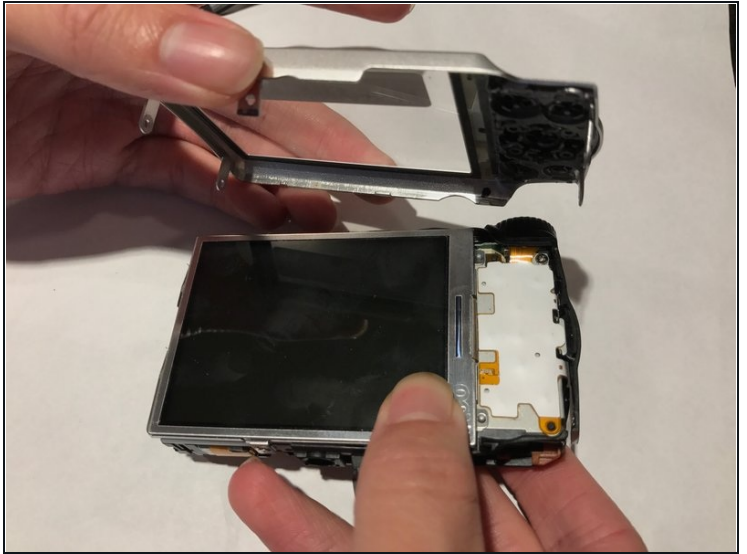
JIS #000 Screwdriver (1)

Step 1 — Back Cover



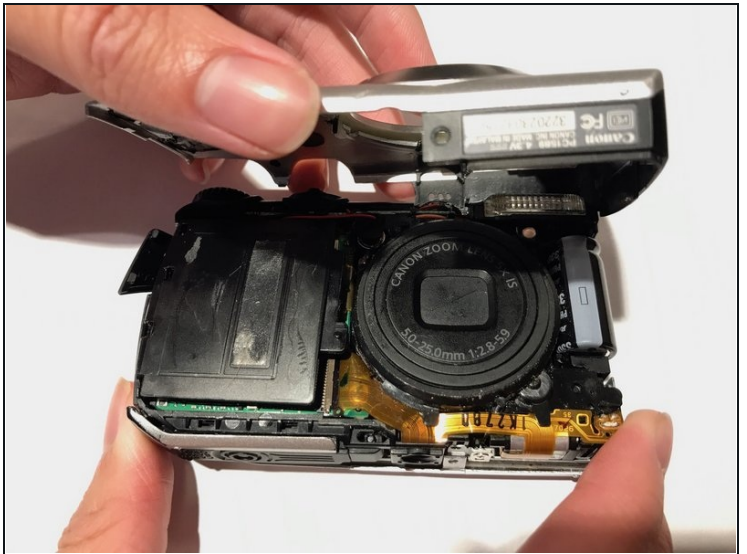
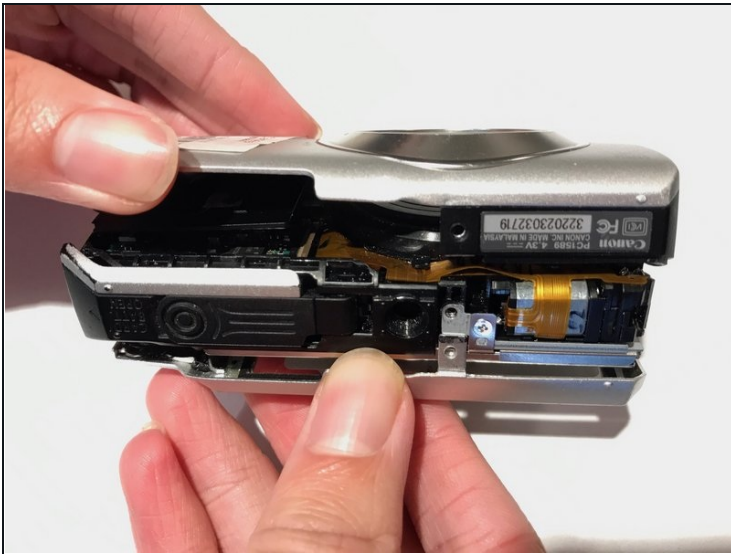
- Remove four 2.7 mm screws, two on each side, from the camera with a JIS 000 screwdriver.
- Remove one 3.5 mm screw on the bottom of the camera with a JIS 000 screwdriver.
- ① When removing the front and back housings, be careful to not break the tabs that hook into the top section of the chassis.

Step 2



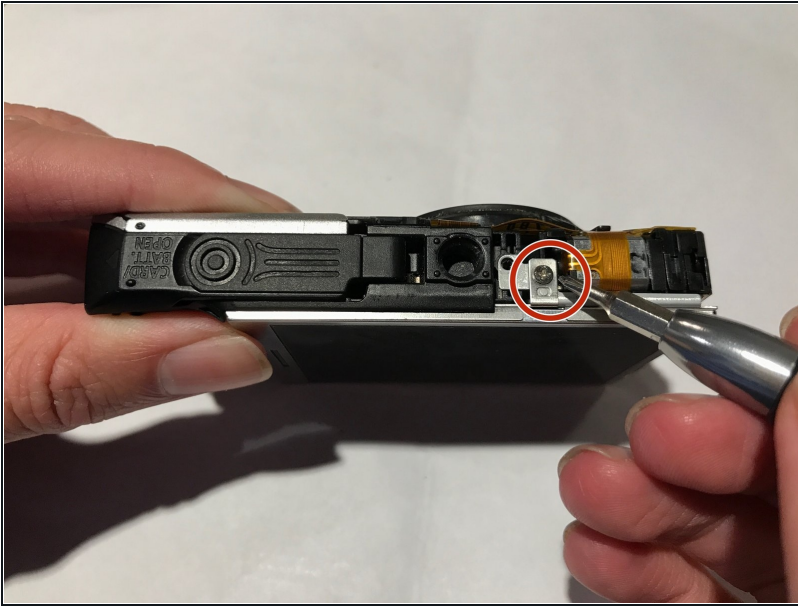
- Pull off the back cover.

Step 3 — Front Cover



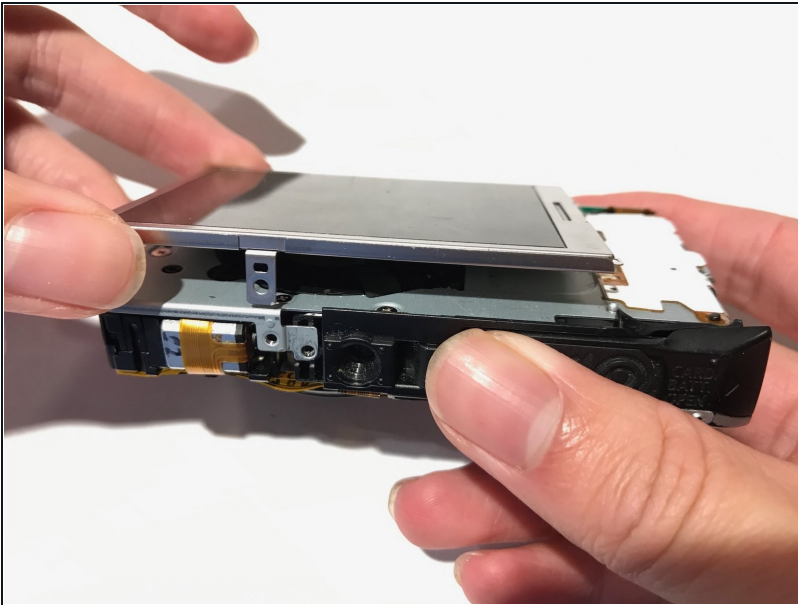
- Pull the front cover off.

Step 4 — LCD Display



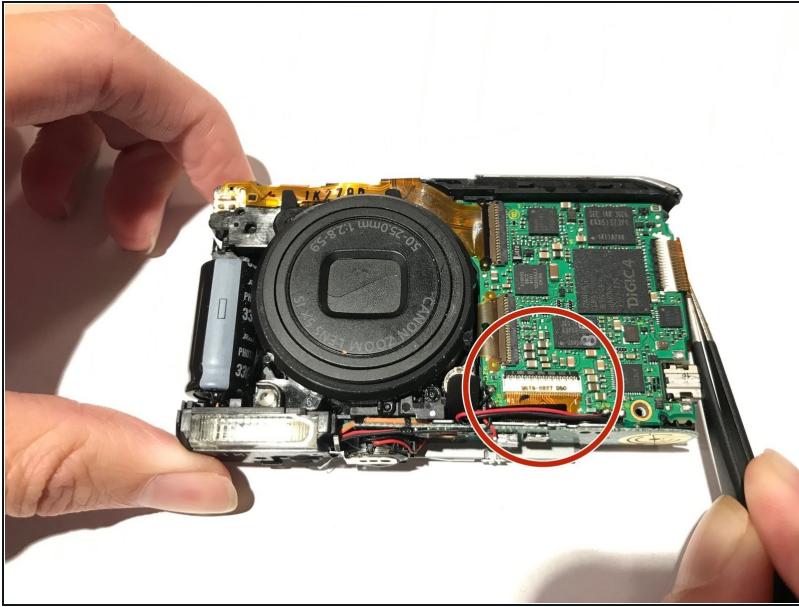
- Use a JIS 000 screwdriver and remove the 3.0mm screw from the bottom housing.

Step 5



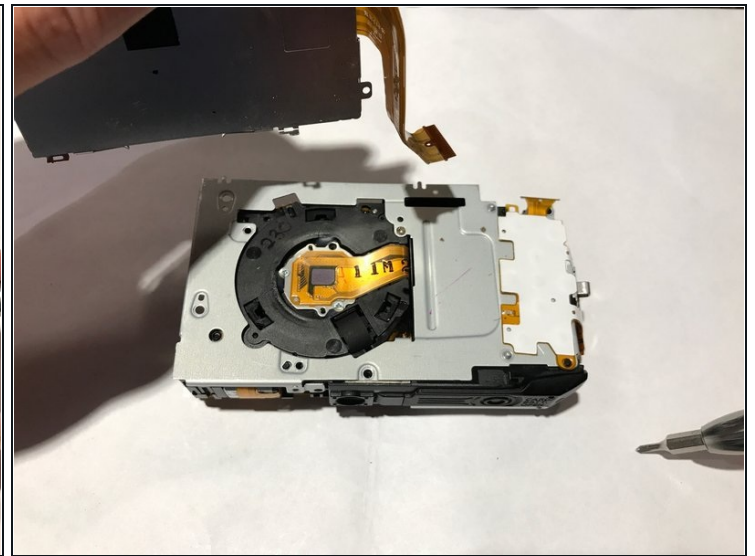
- Gently lift the LCD screen off the back of the camera.

Step 6



- Use [tweezers](#) to pull out the circled brown flat flexible wire from its connection.

Step 7



- Use a spudger to reach under the connecting wire.
- Gently slide the spudger under the wire and lift the wire off the connection.

To reassemble your device, follow these instructions in reverse order.