



Samsung Series 7XE700T1A Power button Replacement

Written By: james





TOOLS:

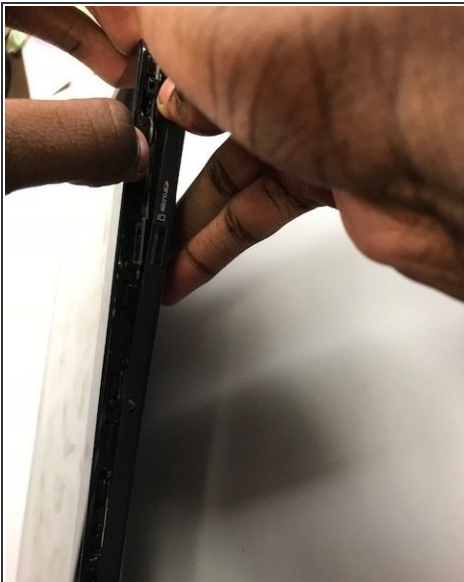
- [iFixit Opening Tool](#) (1)
-

Step 1 — Back panel



- Remove the microSD card before attempting to open the device. Wedge the opening tools inside the device and move it around the perimeter (between the black and silver panels, not between the glass and the black panel) until you have loosened the adhesive that is keeping it together.

Step 2



- With your hands, open up the back panel, separating it from the tablet.

Step 3 — Power button



- With the back panel already removed from the body of the tablet, push the power button(the button with the O/I symbol next to it) out of the panel from the inside. Do so with either your fingers or the removal tools.

To reassemble your device, follow these instructions in reverse order.