



Repair electronics

The sonic toothbrush Philips Sonicare suffer water damage after some time. This guide describes how to fix it.

Written By: Gerd Conzetti

INTRODUCTION

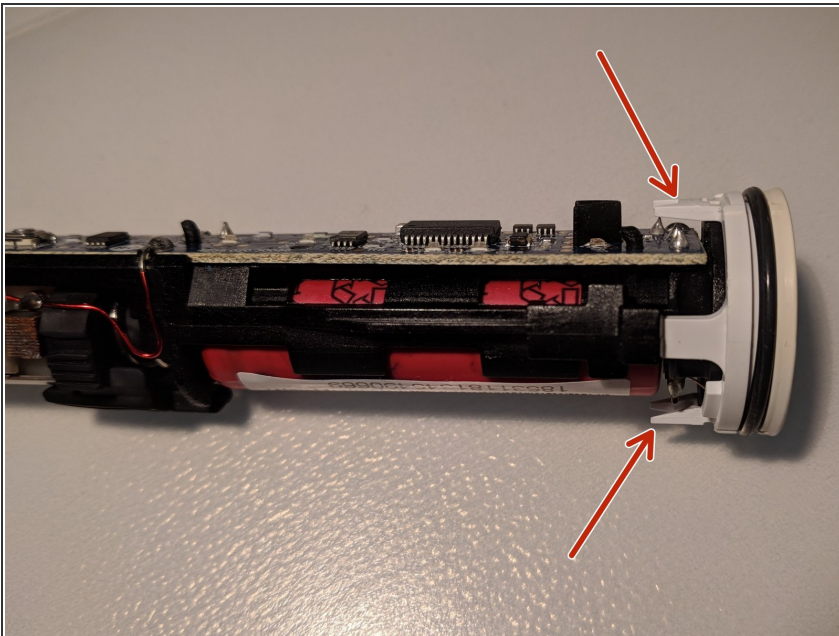
The Philips Sonicare has a lot of votes on the internet, good and bad. Good especially as long as the product works, bad because it does not last very long.

Step 1 — Opening the handpiece



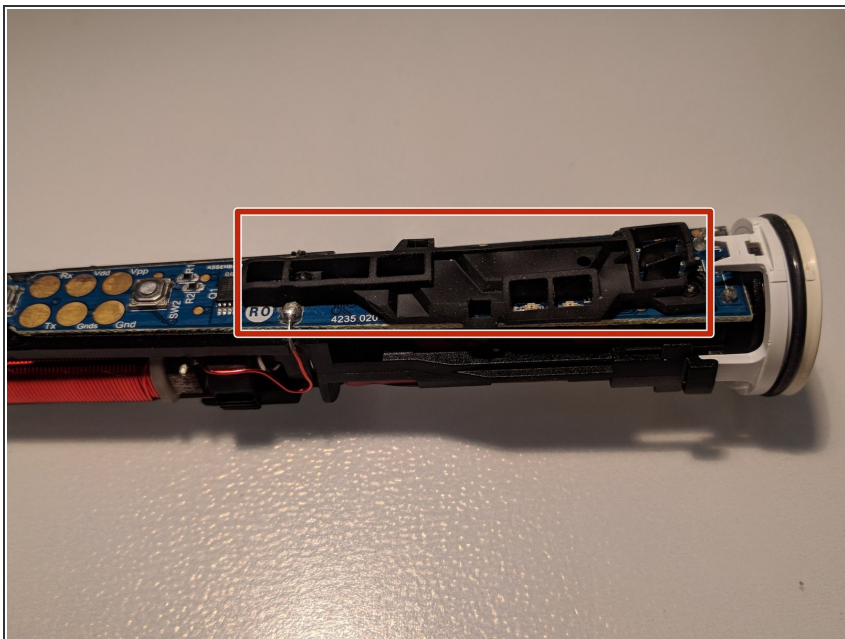
- Seen from below, the handpiece is oval-shaped. Wrap with a cloth, with a pair of pliers, a nutcracker or similar. start where the feet are and put the oval in a circle. At the same time, press the handpiece upside down, ie with the metal shank in front, onto a wooden base, whereby the inner life is expelled.

Step 2 — Remove handpiece base



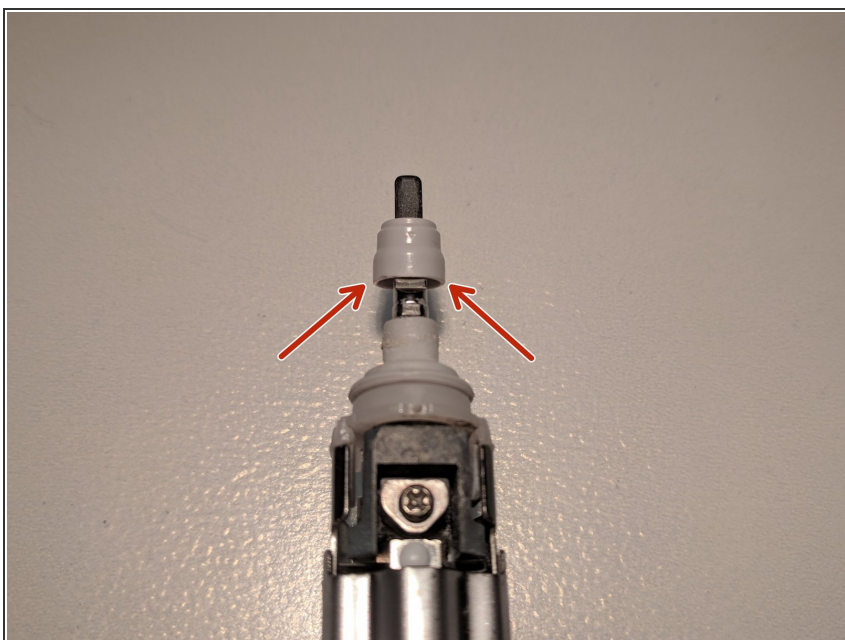
- Remove the underside of the handpiece by carefully lifting the tabs at the two farthest vertexes of the oval with a small screwdriver.

Step 3 — Remove the rubber pad from the motherboard



- Remove the rubber pad from the motherboard

Step 4 — Remove plastic cap from metal shaft



- Use a puller to remove the plastic cap from the metal shaft to expose the defective rubber boot.

Step 5 — Clean items



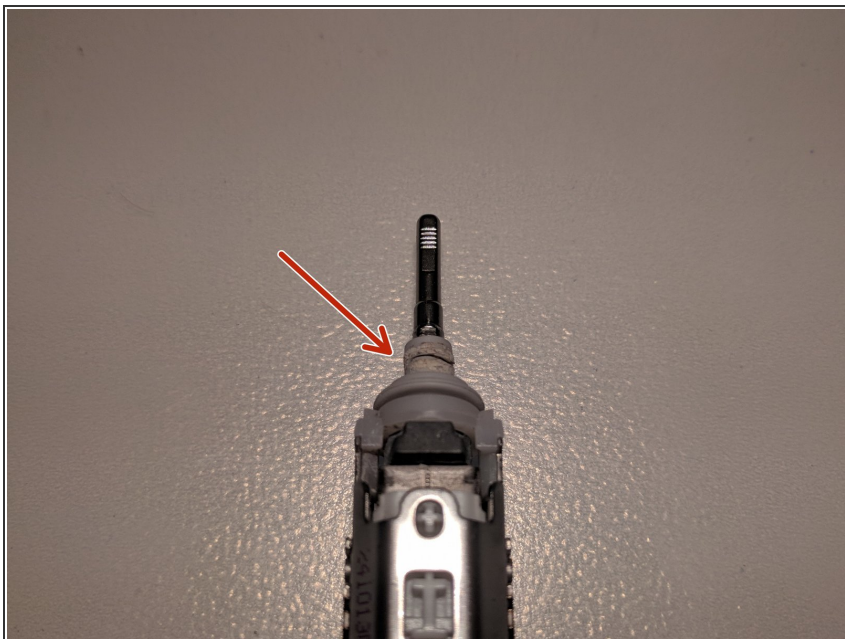
- Thoroughly clean all housing parts with water and cloth.
- Thoroughly clean the electronics and mechanics with isopropyl alcohol and a fine brush.
- Also completely rid the metal shaft of any residue.

Step 6 — Repair electronics



- Place the inner workings of the handpiece without housing parts in a container in such a way that the main board points downwards and the battery points upwards.
- Now fill the container with isopropyl alcohol just enough so that the liquid level reaches the circuit board.
- Leave to stand for 1-2 hours under supervision, then remove the device from the liquid bath and allow to dry.

Step 7 — Replace rubber sleeve



- The defective rubber sleeve on the metal shaft must be replaced. A spare part is available for less than € 4 on eBay under the following designation: "Philips electric toothbrush Waterproof sealing parts for HX6730 HX6930 HX9340»".

Repeat the steps in order to reassemble your device.