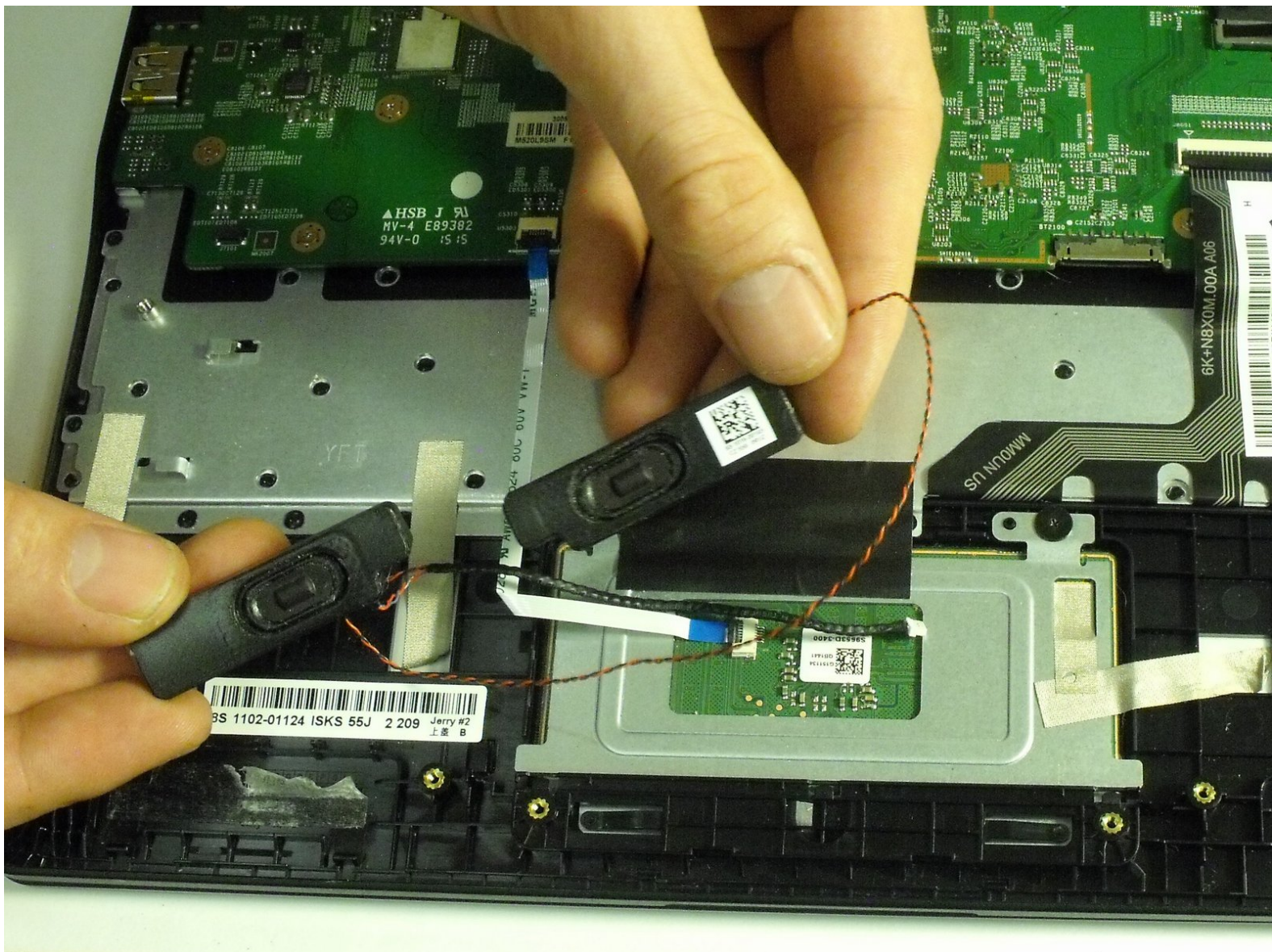




# Poin2 Chromebook 11 Speaker Replacement

This guide shows how to replace the speakers in a Poin2 Chromebook 11.

Written By: Whitney Lunny



# INTRODUCTION

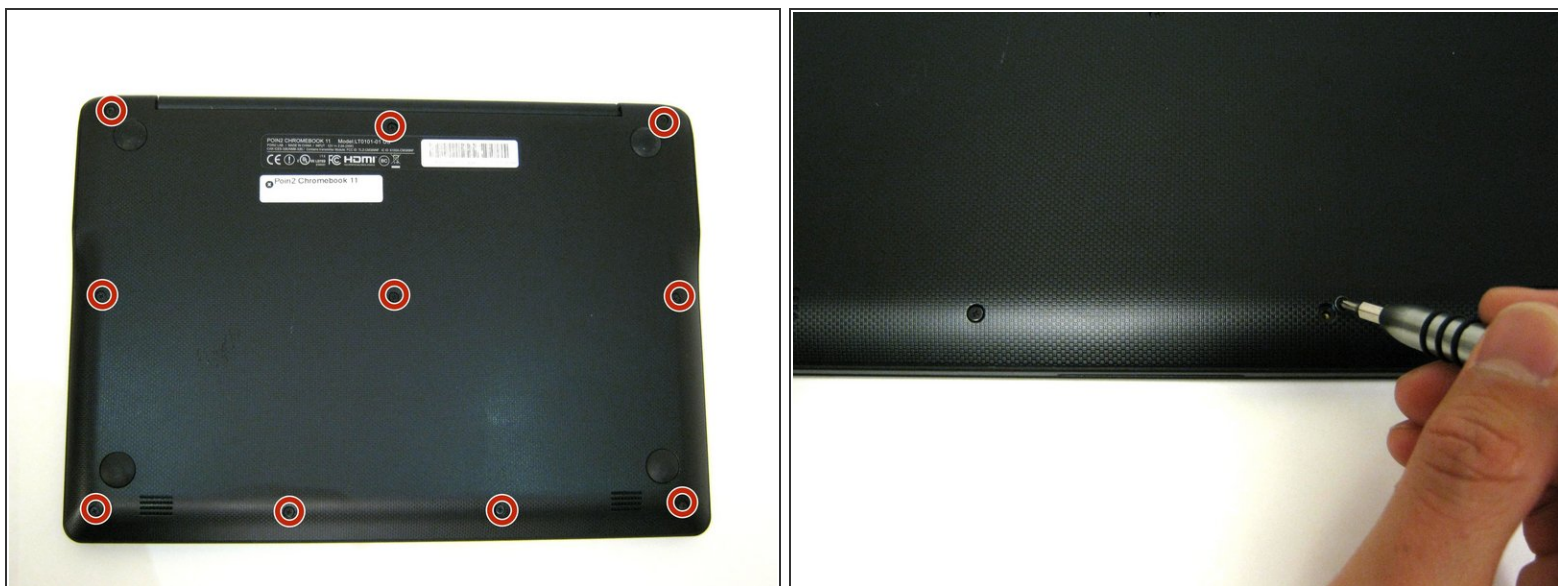
This guide shows how to replace the speakers of the Poin2 Chromebook 11.



## TOOLS:

- [iFixit Opening Tools](#) (1)
  - [Phillips #0 Screwdriver](#) (1)
  - [Spudger](#) (1)
-

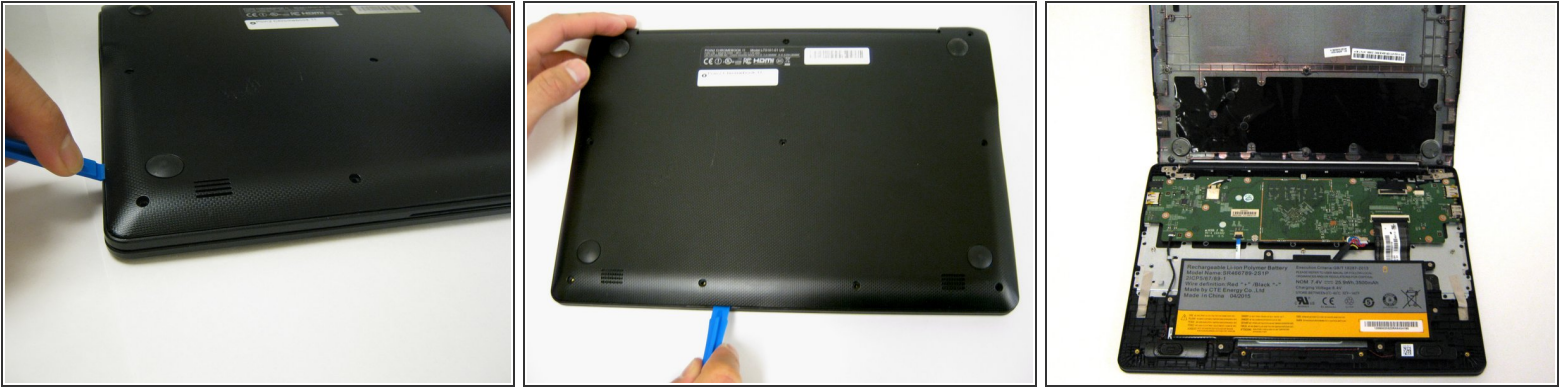
## Step 1 — Battery



- Power down the Poin2 Chromebook 11 and disconnect the power adapter.
- Close the Chromebook and position it with the base facing up.
- Use a #0 Phillips screwdriver to unscrew the ten 7mm screws that hold the base to the rest of the frame
- ⓘ Poin2 Chromebook 11 does not have screws under its rubber feet at the base.

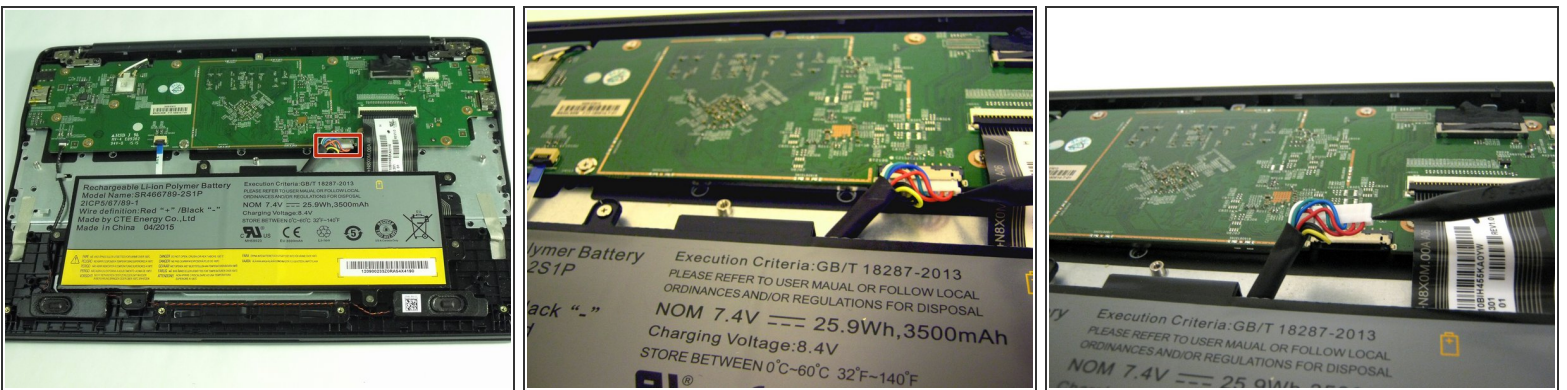


## Step 2



- Insert a 1cm-wide plastic opening tool between the base and top frame.
- ① Applying pressure up and down with the tool may be necessary. When you hear a "click," this indicates the separation of the frame.
- Pry (up and down) around the entire border of the Chromebook to separate.
- Use your hands to gently lift the base away from the frame.

## Step 3



- Disconnect the white 8-wire battery connector from the motherboard using a spudger to push the two L-shaped clips out of the port.
- ① The connector is a tight fit and requires careful pressure for release.

## Step 4



- Remove the six 4mm screws using a Phillips #0 screwdriver.

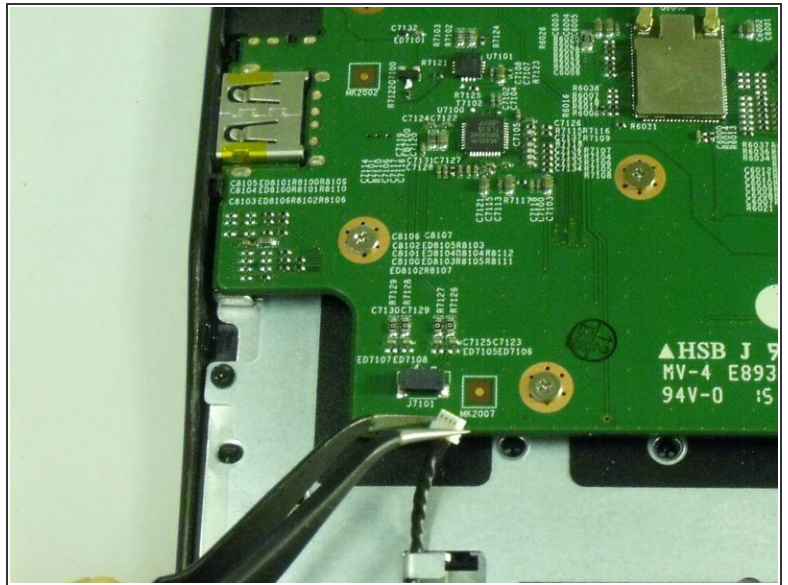
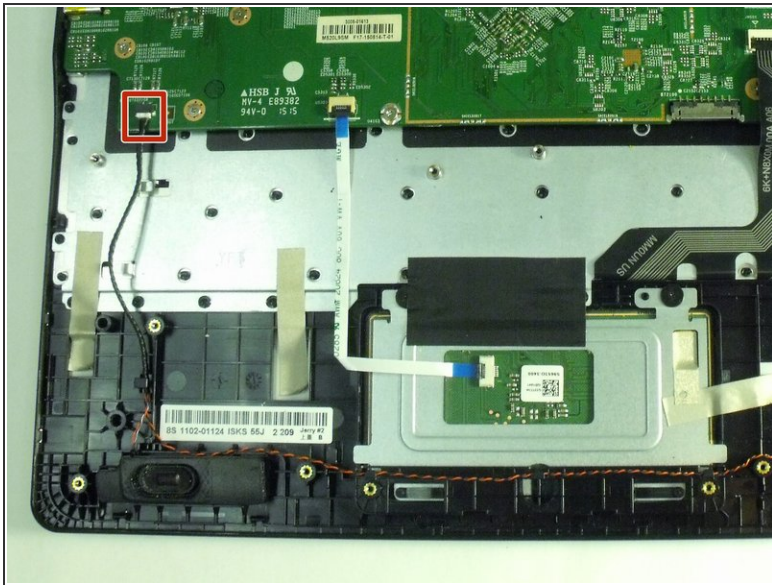
## Step 5



- Lift the battery from the frame.

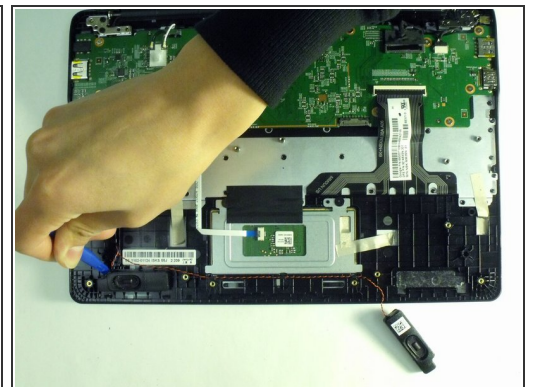
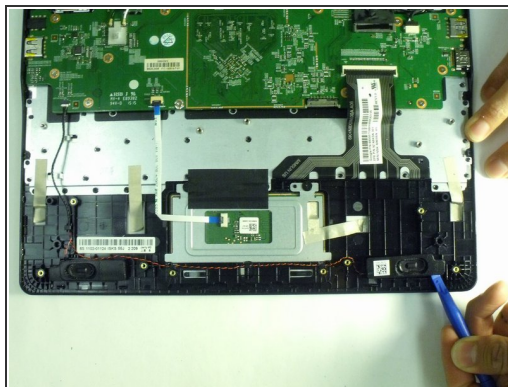
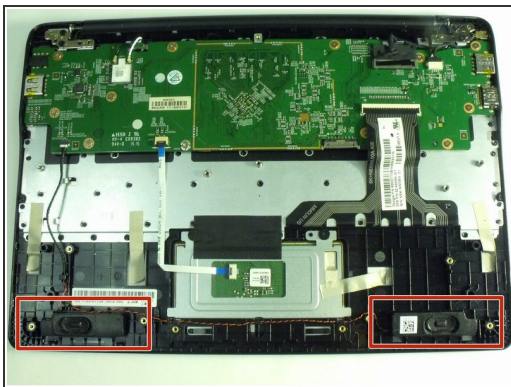


## Step 6 — Speakers



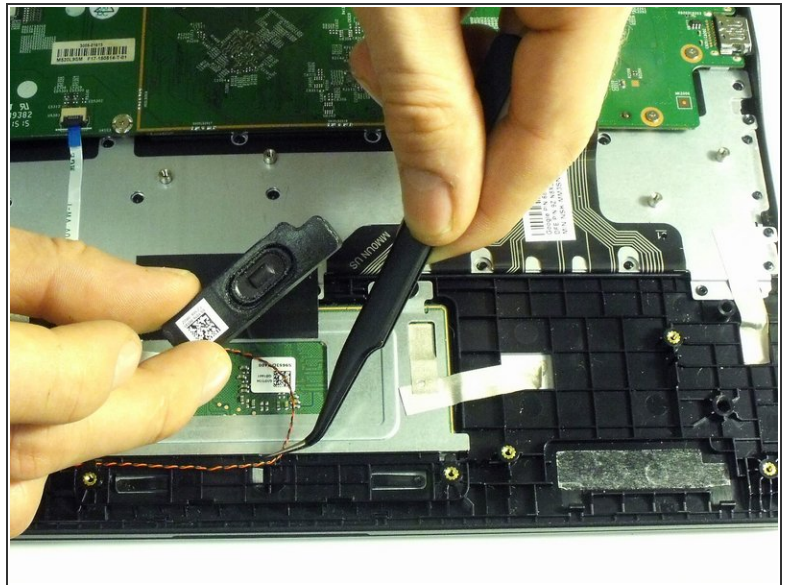
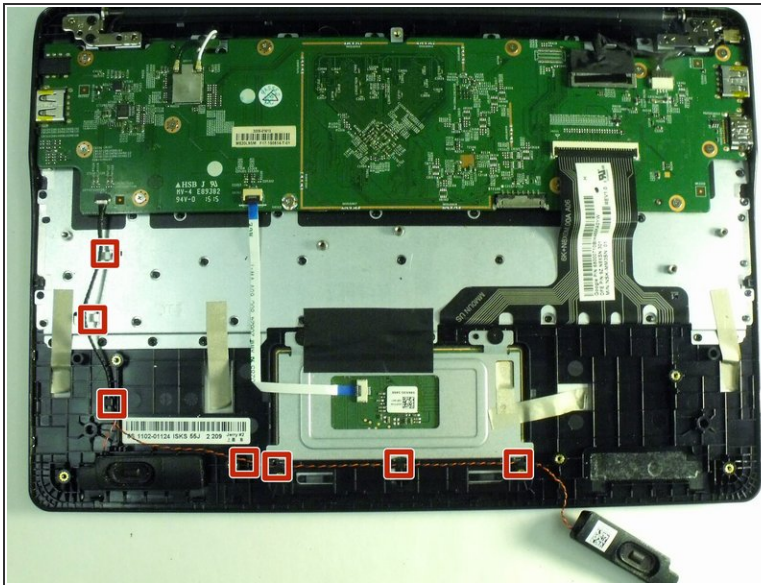
- Unplug the black speaker cable from the lower, left side of the motherboard.

## Step 7



- Use the opening tool to pry the two speakers away from the frame.
- i** An adhesive strip attaches each speaker to the frame. The speakers should pull away with moderate force.

## Step 8



- Detach the speaker cord from the hooks holding it to the frame and lift the speakers away.

To reassemble your device, follow these instructions in reverse order.