



Samsung NP350V5C-T02US Wifi card Replacement

Guide shows how to replace Wifi card for Samsung NP350V5C-T02US.

Written By: Syed Asad



INTRODUCTION

This guide helps users to replace the Wifi card successfully by following these easy steps.



TOOLS:

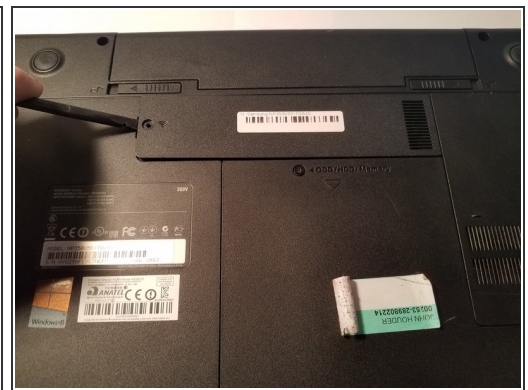
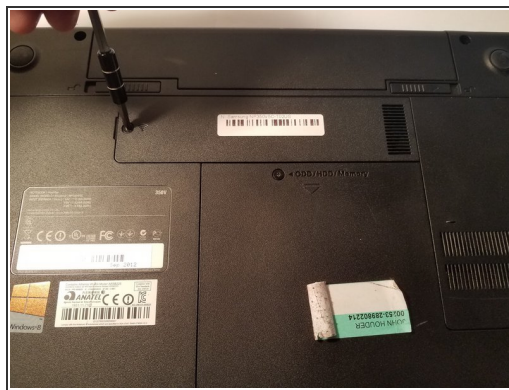
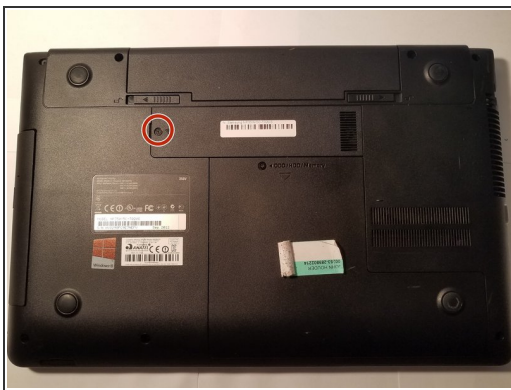
- [Phillips #1 Screwdriver](#) (1)
 - [Spudger](#) (1)
-

Step 1 — Wifi card



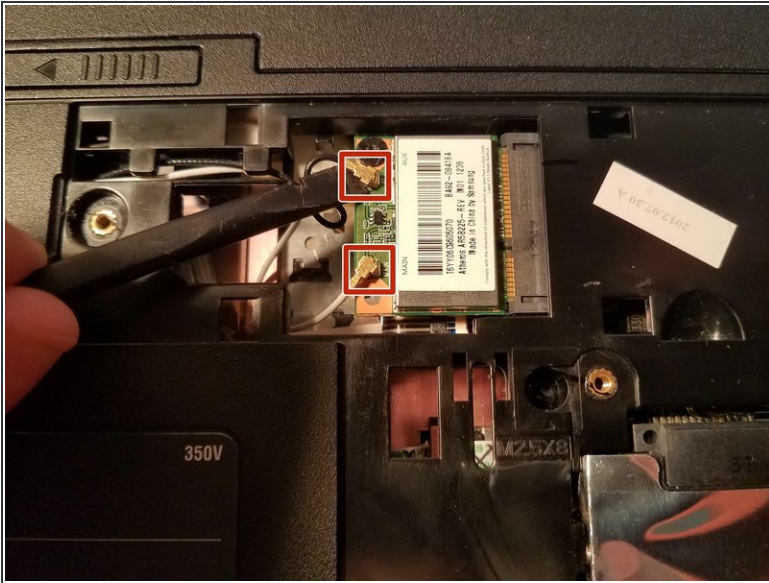
- Flip over the laptop so you are facing the backside.

Step 2



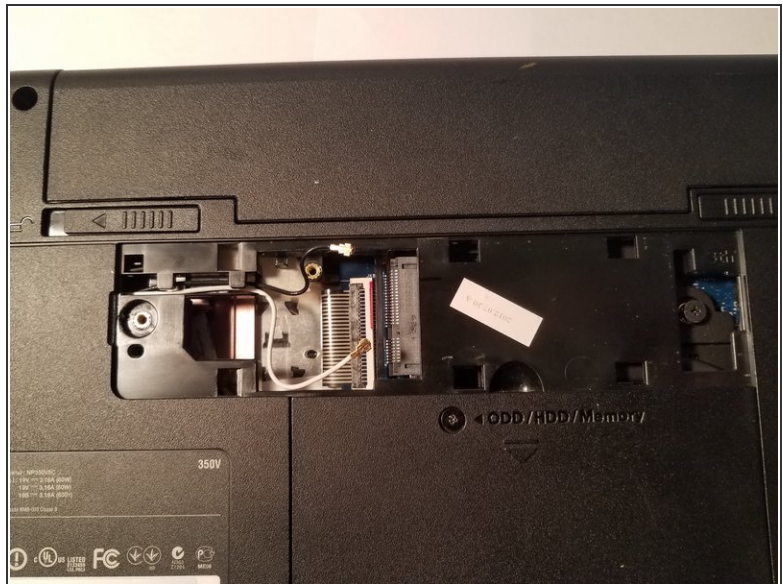
- Look for the compartment with the Wifi symbol on it.
- Using the Phillips #1 screwdriver remove the M2.5X5 screw, located beside the Wifi Symbol.
- Using the plastic spudger, carefully pry the Wifi panel off.

Step 3



- Gently remove the two wires attached to the the Wifi card by using the plastic spudger to pry from underneath the attachment points.
- Using the #2 Phillips screwdriver, remove the M2.5X3 mm screw holding in the Wifi card

Step 4



- Using you hand, gently pull out the Wifi card.

To reassemble your device, follow these instructions in reverse order.