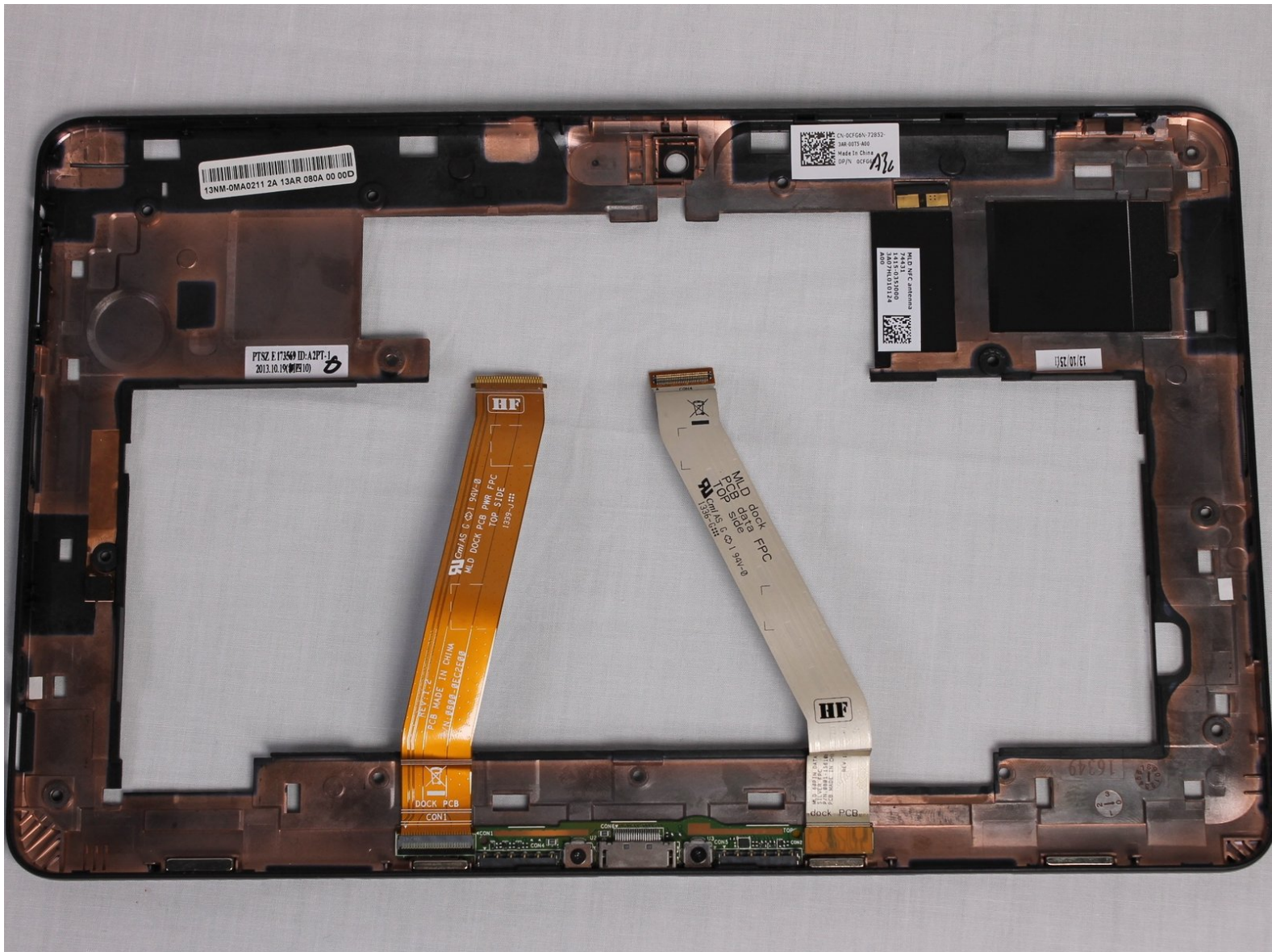




Dell Venue 11 Pro Keyboard Port Replacement

This guide explains how to replace the keyboard port of your Dell Venue 11 Pro device.

Written By: Tom Nguyen



INTRODUCTION

You will need to follow the Battery and Frame replacement guides before working on the Keyboard Port replacement guide. You will encounter two ribbon cables and several screws to remove the keyboard circuit board.



TOOLS:

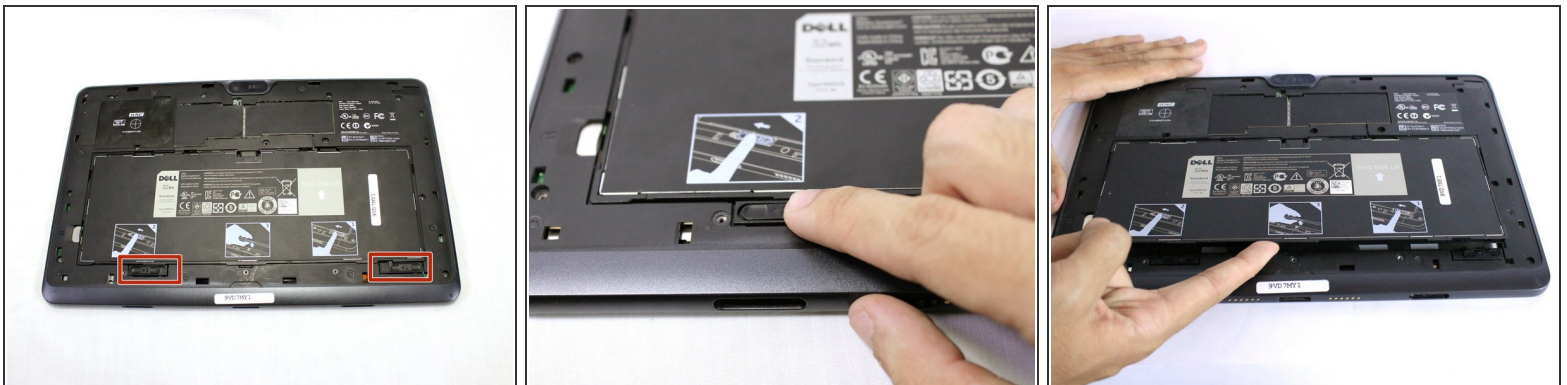
- [Phillips #000 Screwdriver](#) (1)
 - [Spudger](#) (1)
 - [Pin Punch](#) (1)
 - [iFixit Opening Tools](#) (1)
-

Step 1 — Battery



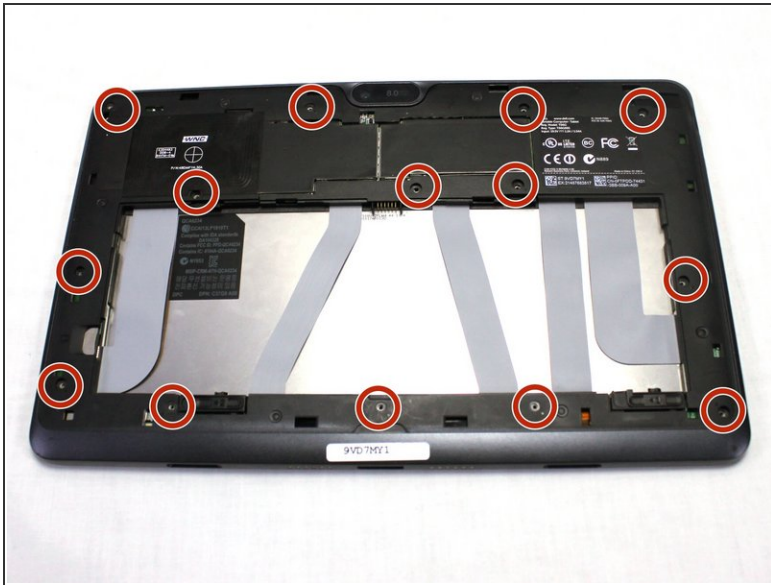
- Turn your device over to the backside. On the notch at the bottom portion of the tablet, use your fingers to lift up the back cover.

Step 2



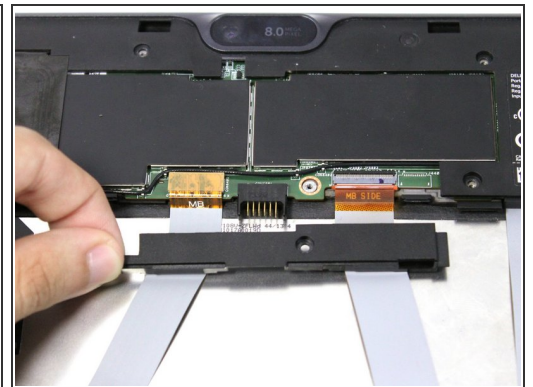
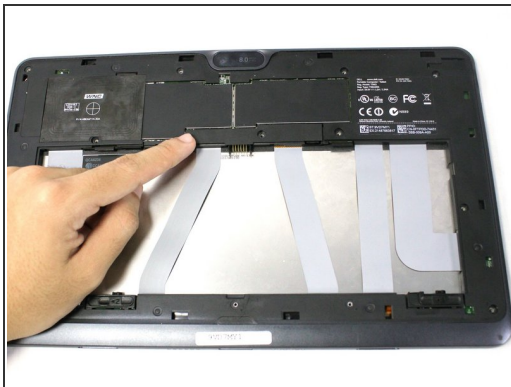
- Below the battery pack, there are two lock mechanisms. Push EACH lock to the LEFT until it makes a click noise. Lift the battery from the bottom up and remove.

Step 3 — Frame



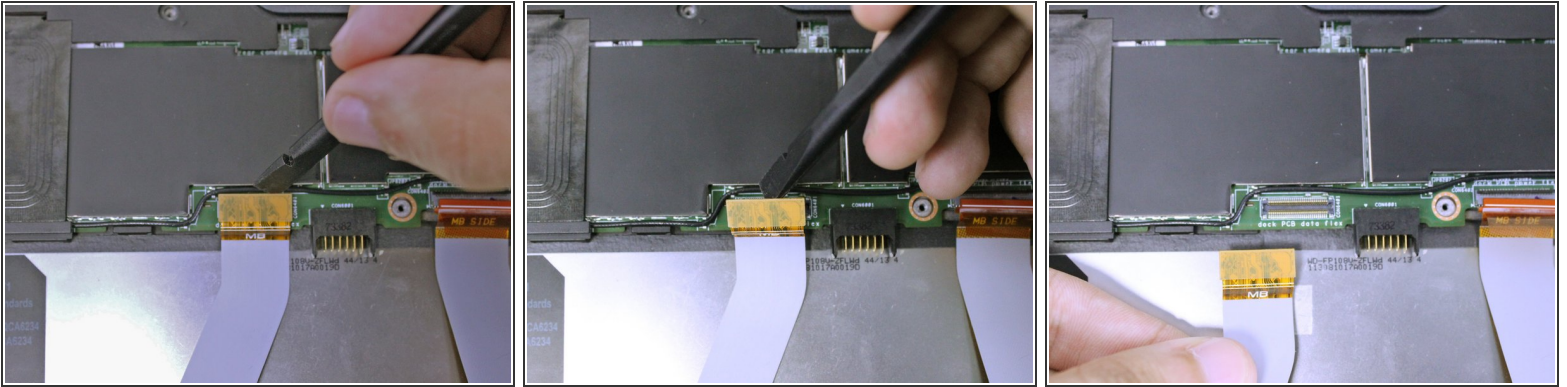
- Use your Philips #000 screwdriver to unscrew the fourteen 2.5 mm screws marked on the tablet.
- ⓘ These screws are extremely small. Place the screws aside in a container or on your magnetic mat to prevent accidental loss.

Step 4



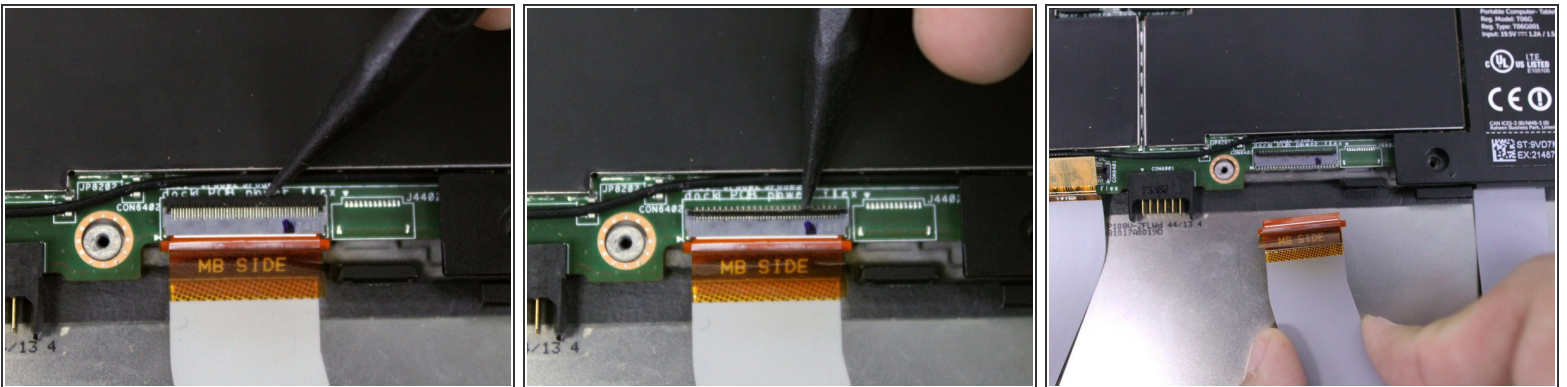
- Slide the cover on the two middle ribbon cables out to remove it. It should uncover the orange cable connectors.

Step 5



- To disconnect the left ribbon cable from the motherboard, place the flat end of your spudger under the edge of the [pop connector](#) and pry the connector straight up.
- ❗ The two ribbon cables connect the keyboard attachment ports to the motherboard. Damage to either cables can induce problems with the Dell mobile keyboard.

Step 6



- The right ribbon cable has a [ZIF connector](#). Use the flat end of your spudger to lift up the small locking flap, then pull out the cable.
- ⚠ Pulling the ribbon cable out before unlocking the connector can potentially damage the cable.

Step 7



- There are adhesive strips between the device and the two ribbon cables we disconnected. Pull each cable away from the device just enough to break the adhesive bonds.

Step 8



- Use your pin punch driver to push into the hole on the sim card, then pull out the sim tray.

Step 9



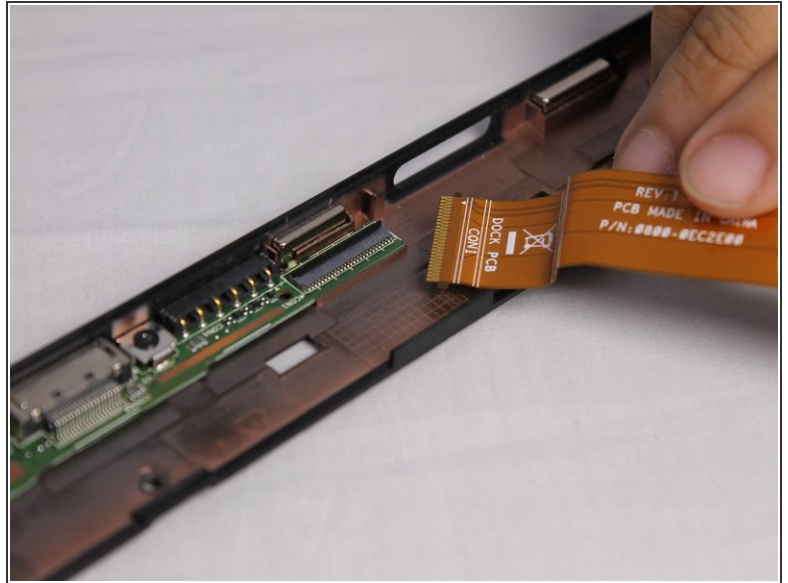
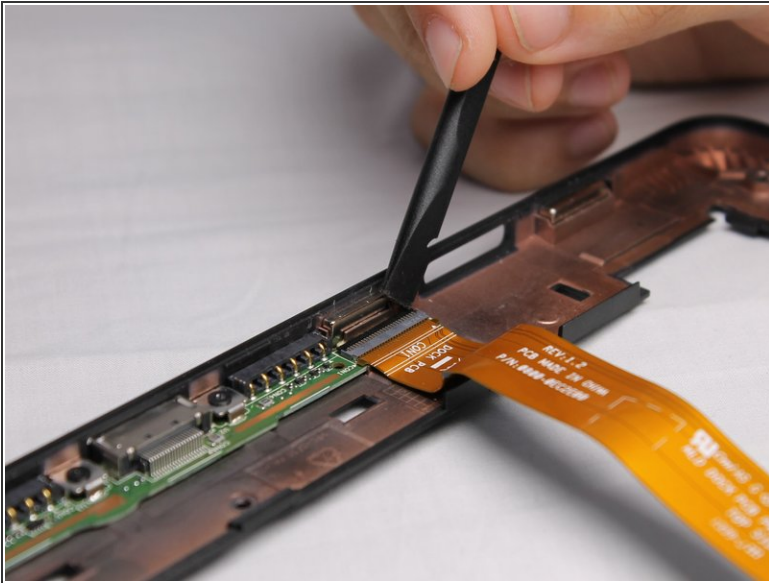
- Insert your plastic opening tool between the screen and frame, and run the tool around the edges to separate the frame from the tablet.

Step 10 — Keyboard Port



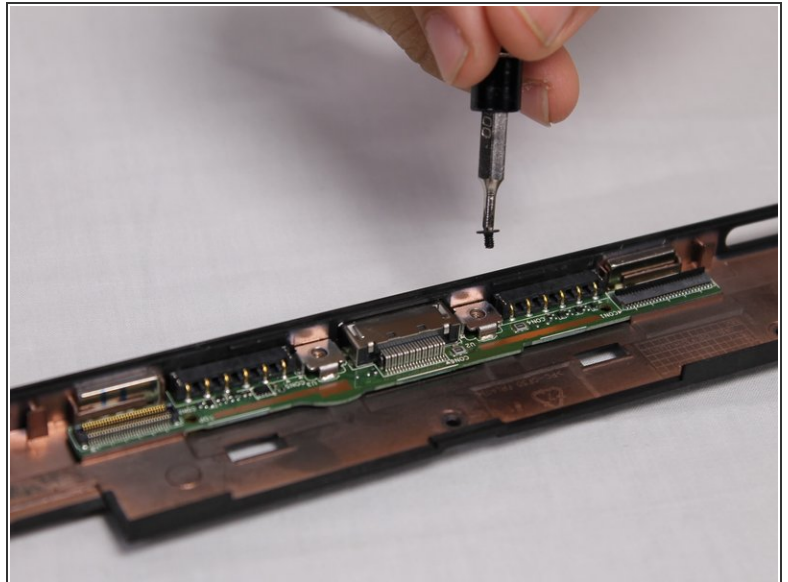
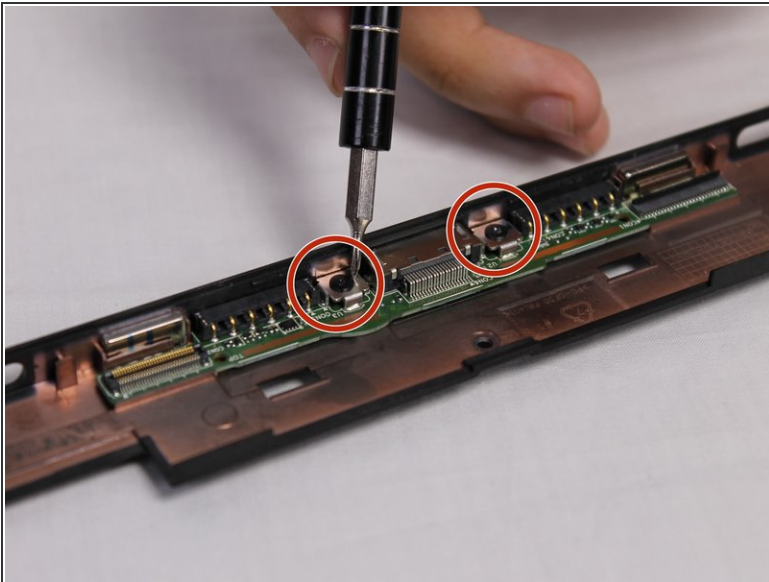
- Next, you need to remove the two ribbon cables located at the bottom of the frame. To detach the first ribbon cable you need to pull straight up on the orange connector.

Step 11



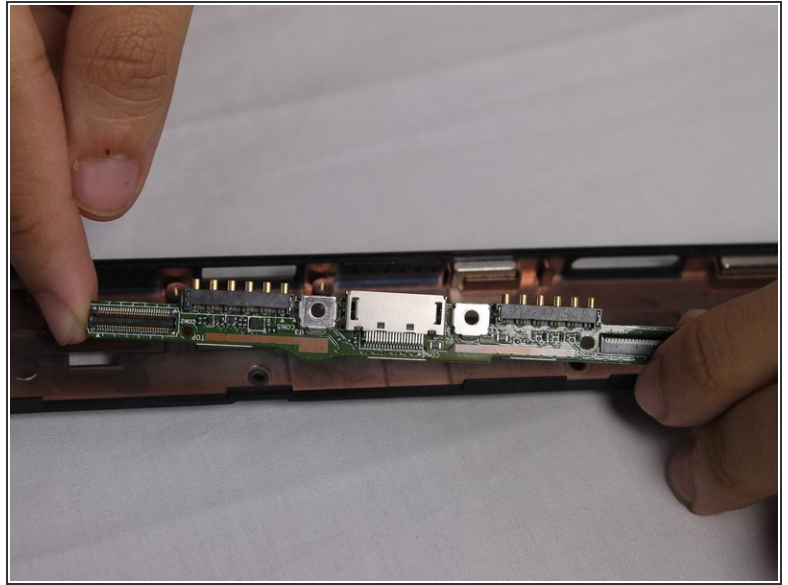
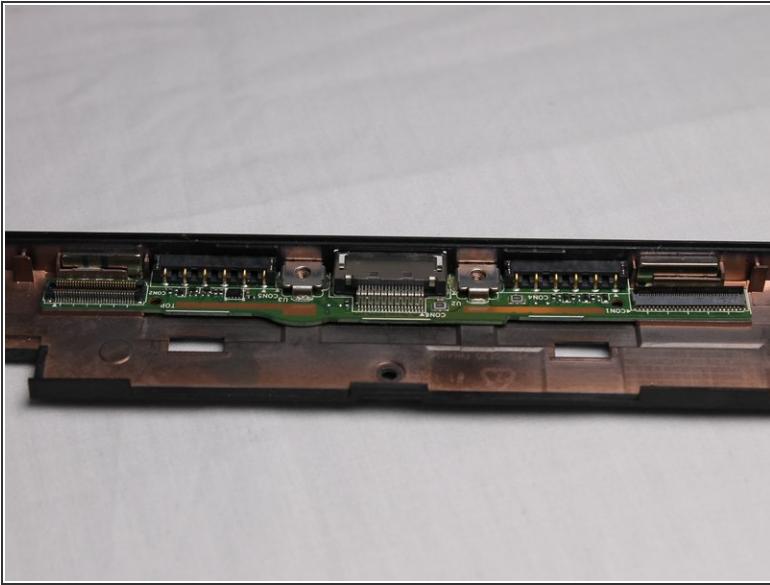
- To remove the second ribbon cable you must first raise a black retainer with a thin plastic tool. Then you must pull the cable down to free it from the frame.

Step 12



- Now you must remove two 2.5mm screws that are securing the keyboard port to the frame. When removing the screws use the Phillips #000 bit.

Step 13



- The final step is to lift the keyboard port free from the frame using your fingers.

To reassemble your device, follow these instructions in reverse order.