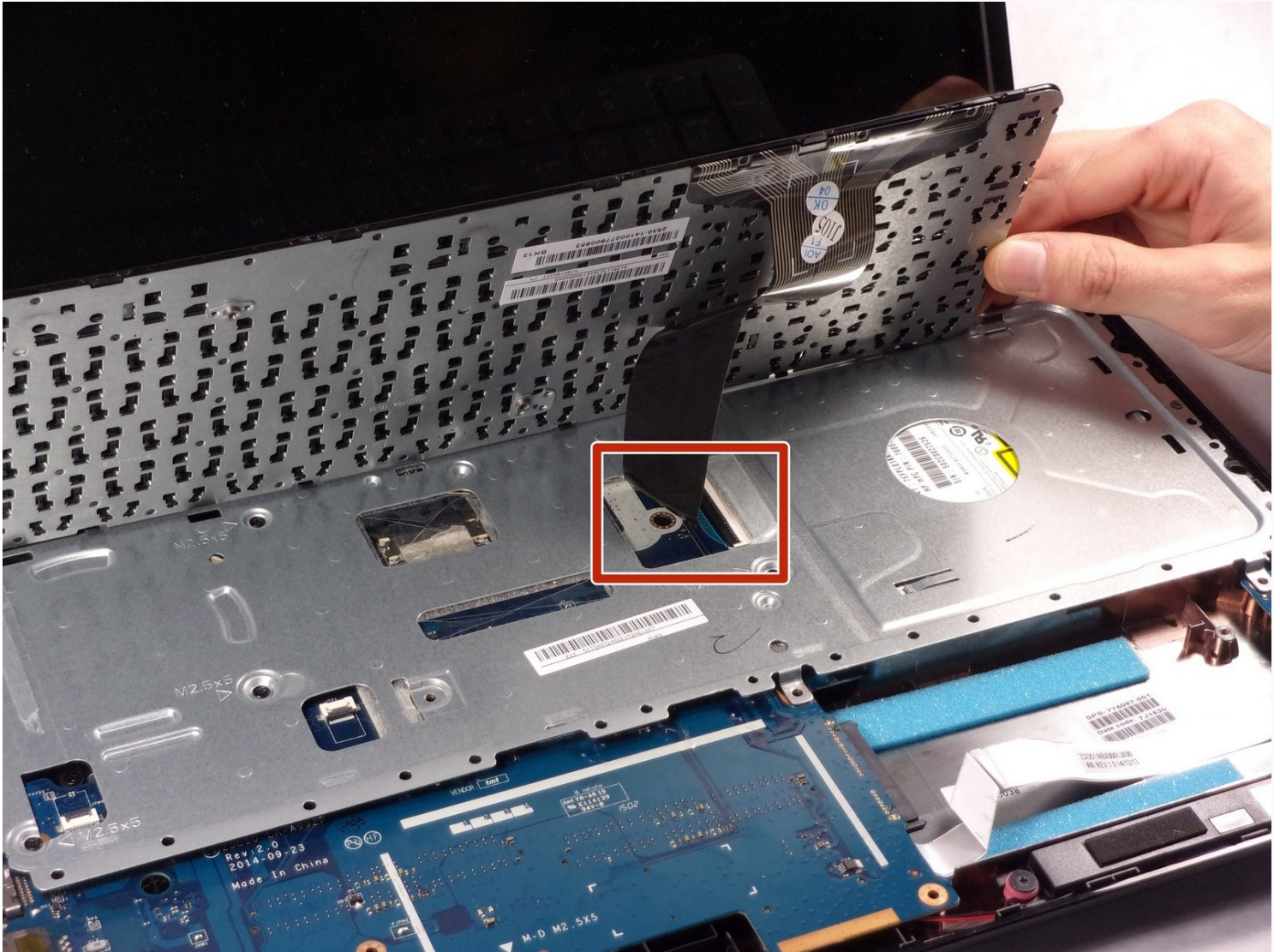




# HP 15-r137wm TouchSmart Keyboard Replacement

You can use this guide to help you safely and...

Written By: Ross B Jacques



# INTRODUCTION

You can use this guide to help you safely and effectively remove the keyboard from your HP 15-r137wm TouchSmart device. Be sure to follow all steps in order to ensure proper removal of components and connections. This guide is a prerequisite for all guides of this device following the removal of the keyboard, since it is required to remove the housing to access the components. The prerequisite guide of the front panel assembly is required for this guide.

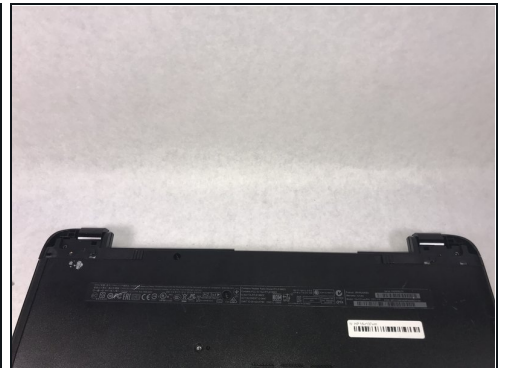
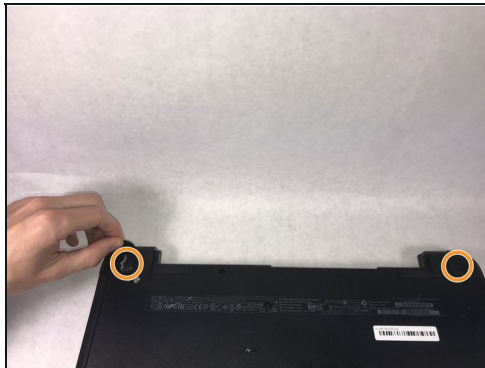
## TOOLS:

[iFixit Opening Tool](#) (1)

[Anti-Static Wrist Strap](#) (1)

[Phillips #0 Screwdriver](#) (1)

## Step 1 — Front Panel Assembly



 **Make sure that the device is powered off and unplugged before removing components.**

- Remove all ten (10) 5.5 mm Phillips #0 screws.
- Remove the two (2) plastic tabs located at the rear of the panel. Locate the two (2) 7.5mm Phillips #0 screws underneath the pads and remove.

## Step 2



- Use a wide plastic opening tool to pry off the top casing.
- ❗ Be cautious not to crack the casing near the keyboard as it is quite fragile.
- Lift the cover off carefully as there are wires still attached to internal components.

⚠ After panel is removed, use an [anti-static wrist strap](#) to ensure the motherboard does not get any external shocks from static discharge.

## Step 3

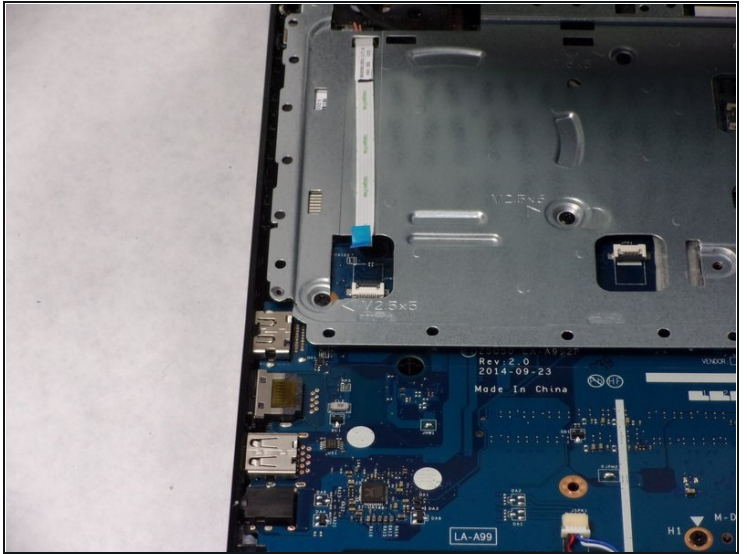
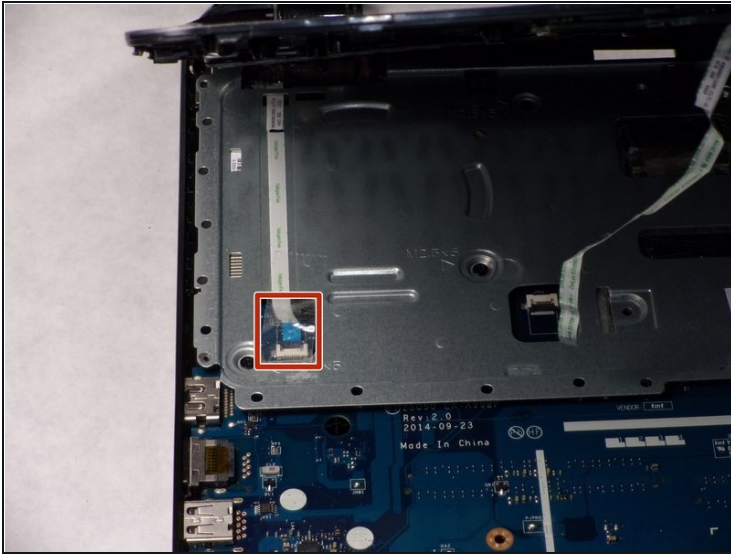


⚠ The connection for the track pad is still connected.

- Move the keyboard slightly out of the way to locate the connection.
- Disconnect the small wire protruding from the motherboard underneath the metal plate.



## Step 4

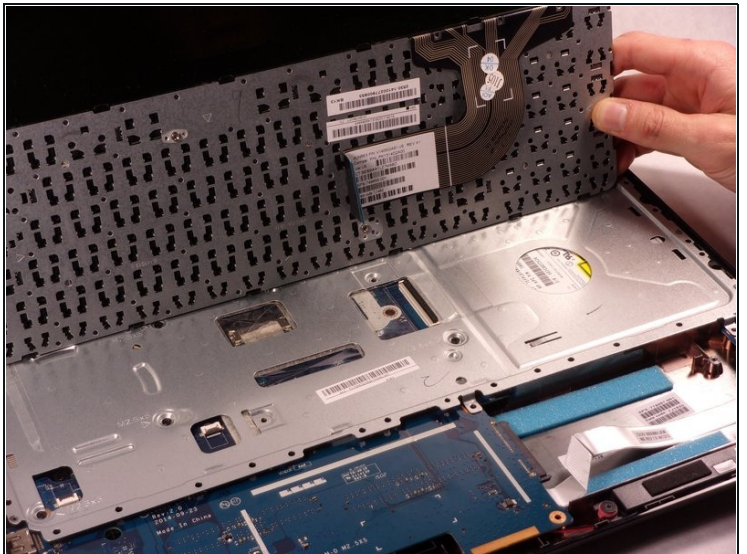
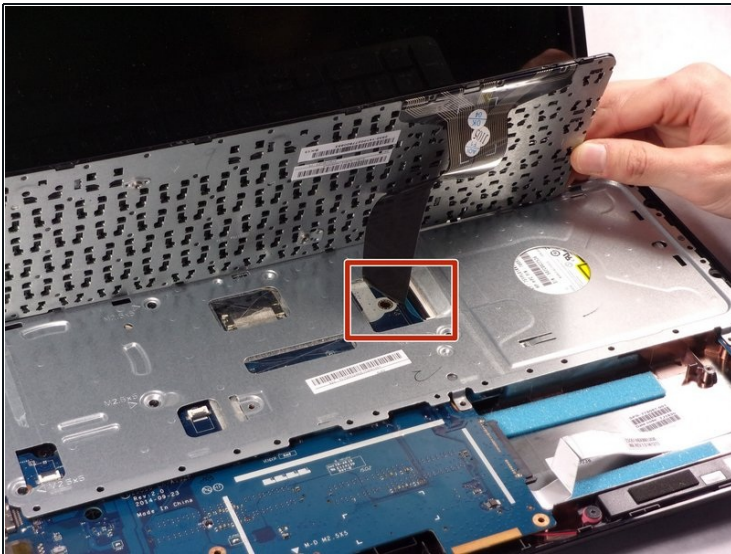


- Locate the connection between the power button and the connecting cable.

⚠ Do not lift the front panel off too far as the cable is still attached.

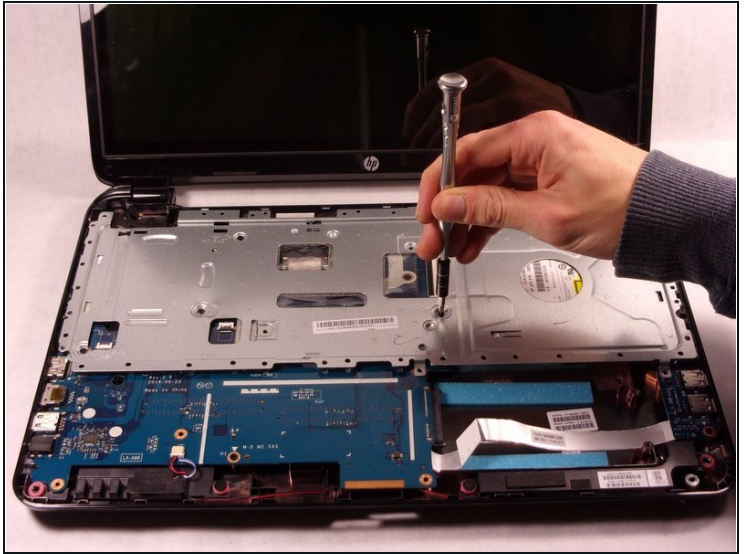
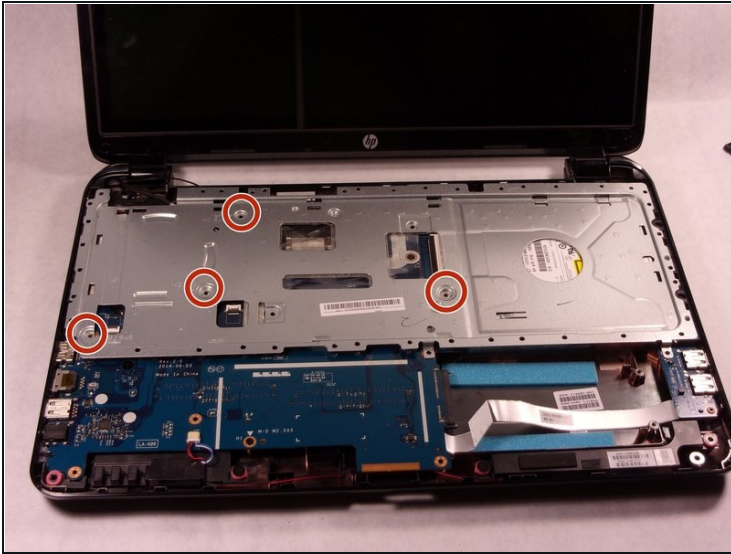
- Remove the cable from the motherboard carefully.

## Step 5 — Keyboard



- Disconnect the connection between the keyboard and the motherboard.

## Step 6



- Remove the four (4) 2.5mm by 3.5mm Phillips #0 screws from the metal retaining plate.
- Lift the metal retaining plate off and away from the device.

---

To reassemble your device, follow these instructions in reverse order.