



Retro-Bit Retro Duo Controller Button and Pad Replacement.

Replacement of the Retro-Bit Retro Duo Game Console controller buttons and pads.

Written By: Evelyn



INTRODUCTION

If your controller(s) have button malfunctions, they can be replaced.

TOOLS:

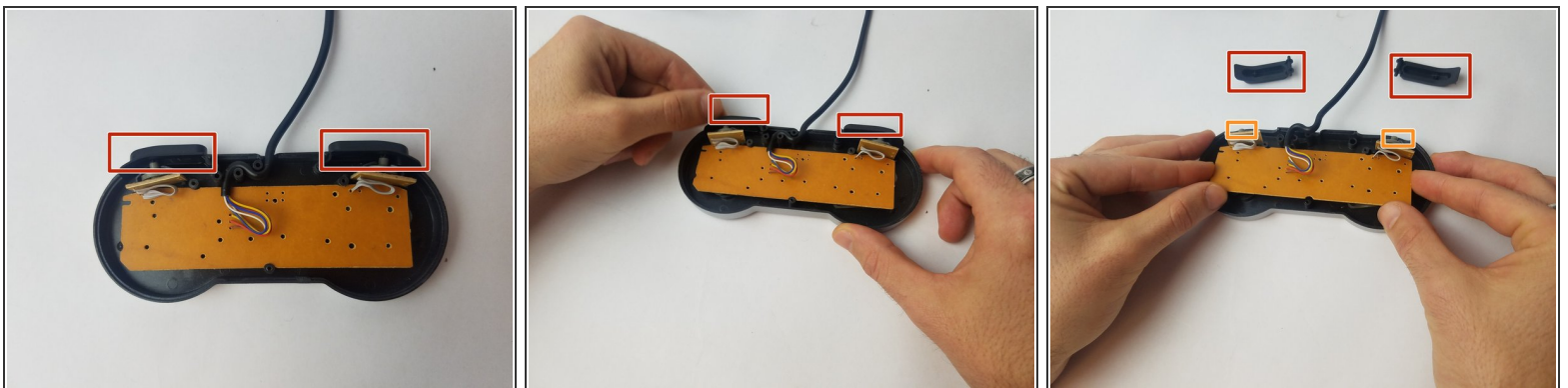
- [Phillips #1 Screwdriver](#) (1)
-

Step 1 — Buttons and Pads in Controller(s)



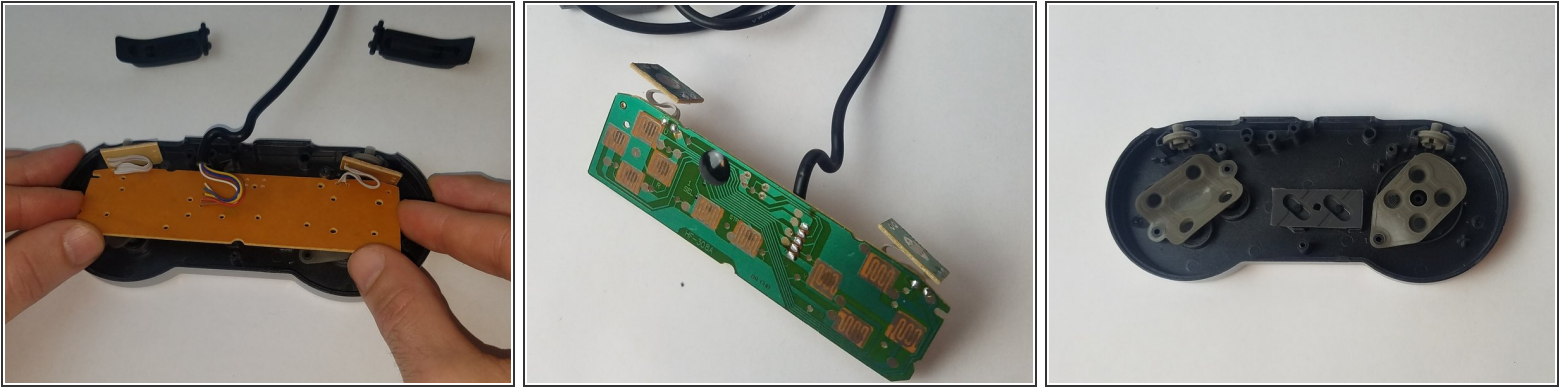
- With the controller on its face, remove the five 6 mm Phillips #1 screws.
- After screw removal, carefully lift the controller casing.

Step 2



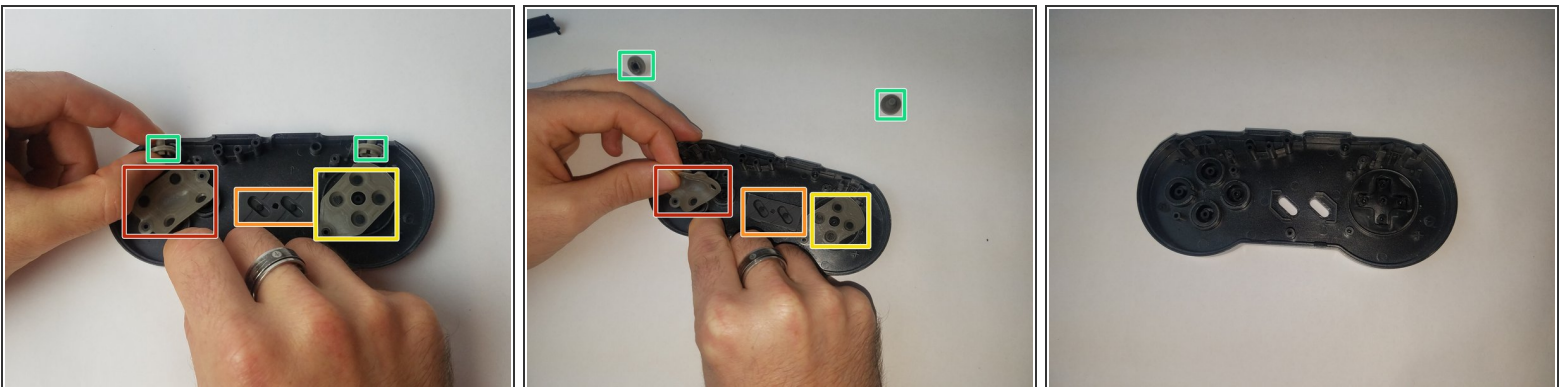
- Pinch the top and bottom of the shoulder pads, then lift out.
- There are small elastic pads below each shoulder pad. Replace these if they are not functioning correctly.

Step 3



- Carefully lift the circuit board from the controller case.

Step 4



- To replace the action button pad, lift this part out.
- Lift the Select and Start button pad.
- If replacing the D-Pad, lift this pad.
- Pinch and lift the shoulder button pads.

Step 5



- Support the controller face and push buttons toward the inner case.
 - ⓘ Use care. The buttons have a tiny tab to keep them in place.
- Support the controller face and push the D-Pad toward the inner case.

To reassemble your device, follow these instructions in reverse order.