



Nextbook NXA8QC116B Display Assembly Replacement

This guide will provide steps to remove and replace the Nextbook NXA8QC116 Display Assembly

Written By: Robert Englehardt



INTRODUCTION

If you have a cracked glass or a poor sensing touchscreen, they need to be replaced. This guide will take you through the steps to replace the display assembly which consists of the screen and glass as one component. You will begin by removing the battery, then the motherboard, and finish with the display assembly. The most difficult part will be removing the back cover, so please follow the steps carefully. The entire process is moderately difficult and will take you approximately 31 minutes to complete.



TOOLS:

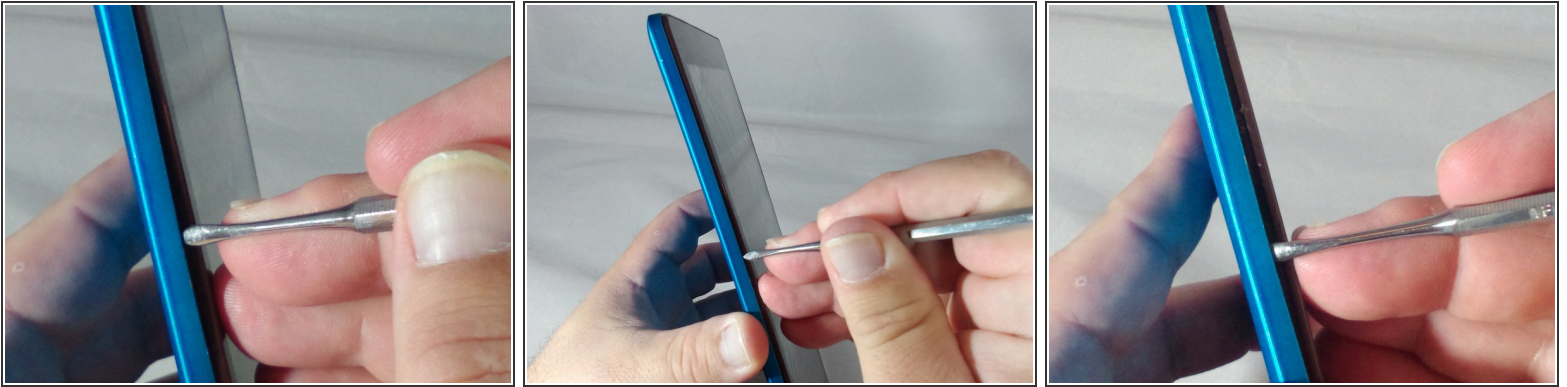
- [Tweezers](#) (1)
- [Metal Spudger](#) (1)
- [Small Needle Nose Pliers](#) (1)
- [JIS #00 Screwdriver](#) (1)
- [Spudger](#) (1)



PARTS:

- [Copper tape](#) (1)

Step 1 — Battery

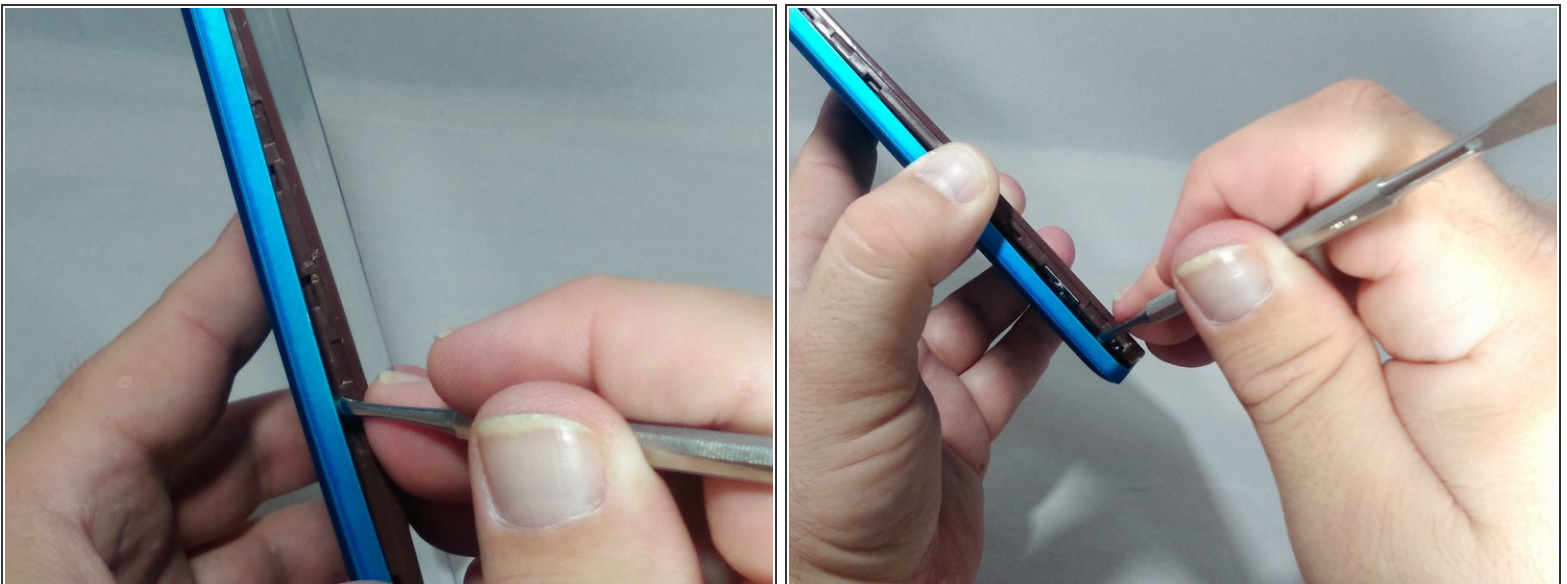


⚠ If you see any leakage coming from the tablet do not open the back cover!

⚠ Ensure you do not pry around the buttons. This could result in damage and render them inoperable.

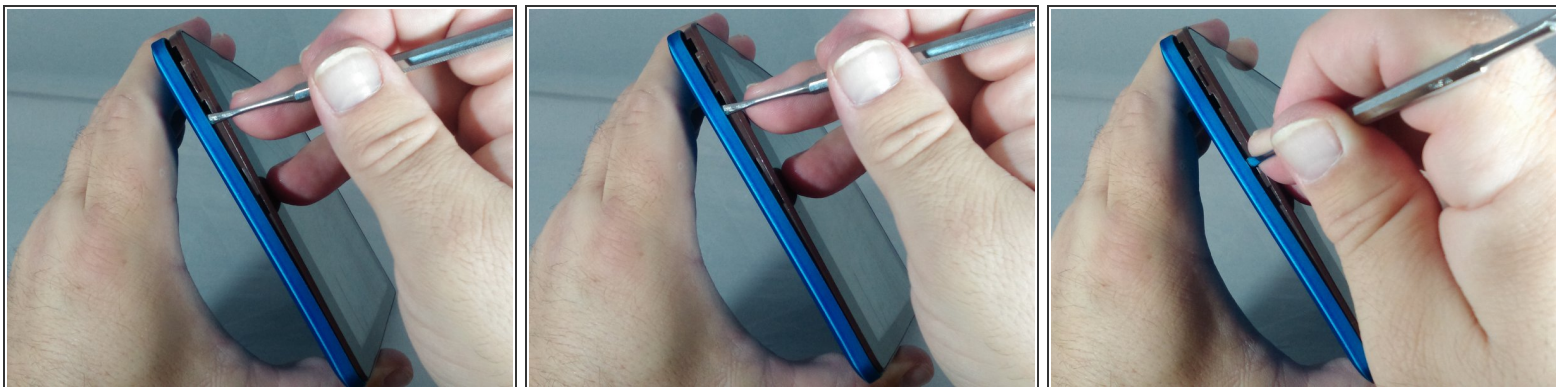
- With the tip of the thin metal spudger in place, use a prying motion to work the spudger down the side to the corner of the device.

Step 2



- Continue working the spudger downward and pry with the spudger until the bottom left-hand corner of the tablet is reached.

Step 3



- Along the bottom of the tablet, keep using a working and prying motion with the spudger to loosen the cover.

Step 4



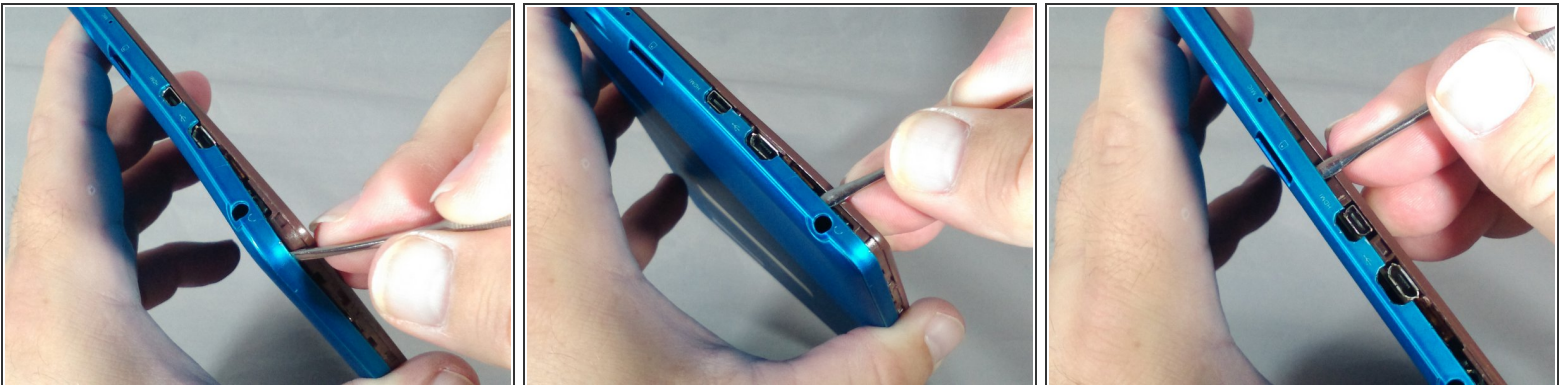
- Continue prying motion until the bottom right-hand corner of the tablet is reached.

Step 5



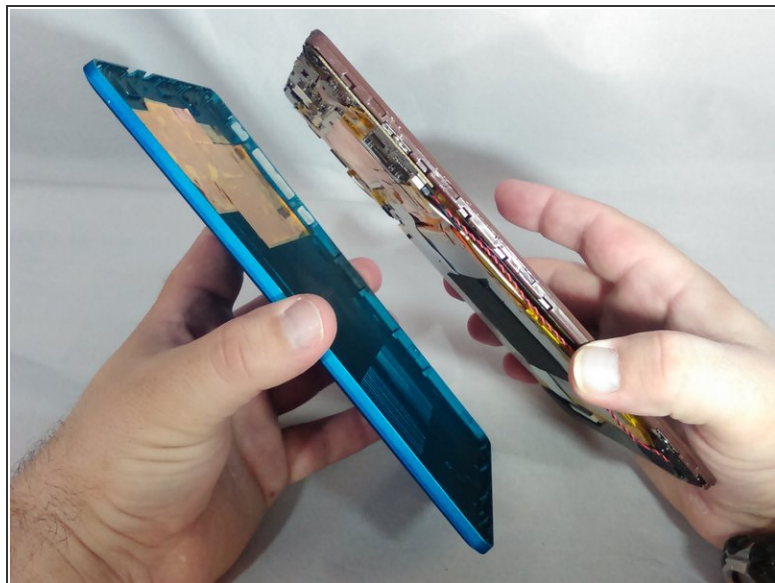
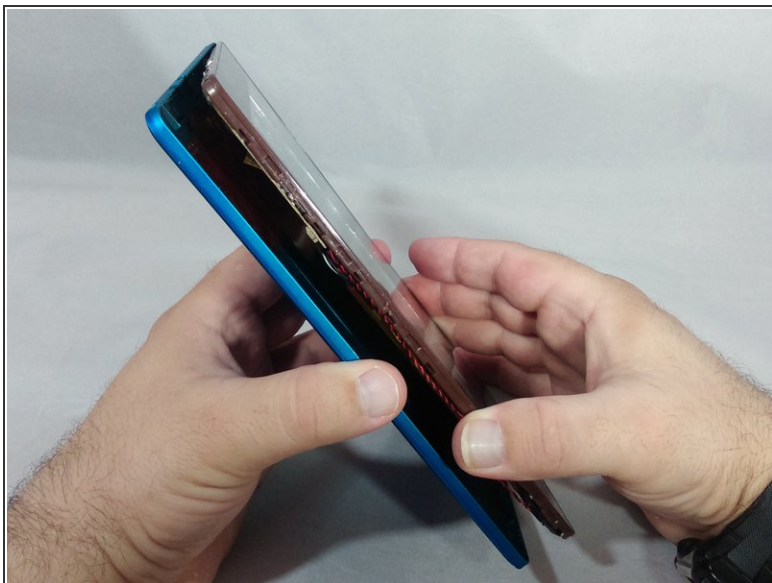
- Work the spudger to the upper left-hand corner of the tablet.

Step 6



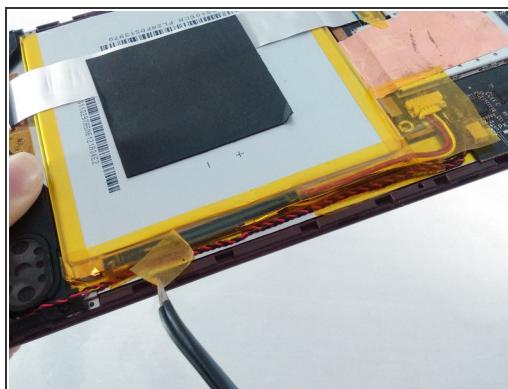
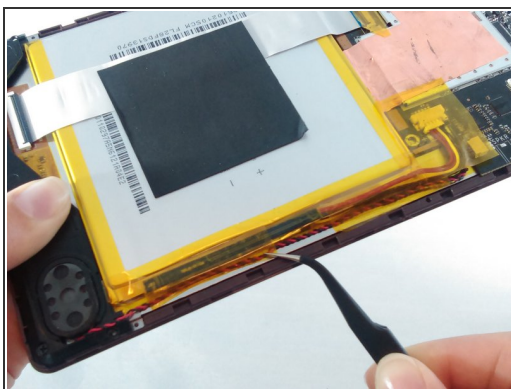
- ⚠ Be careful once you get to the top of the tablet with the spudger so as not to damage the headphone jack and other ports.
- ⓘ When prying along the top of the tablet, try to keep the spudger between 70 to 85 degrees (almost perpendicular) to the tablet screen.
- Continue working the spudger around the tablet until the cover of the device comes off

Step 7



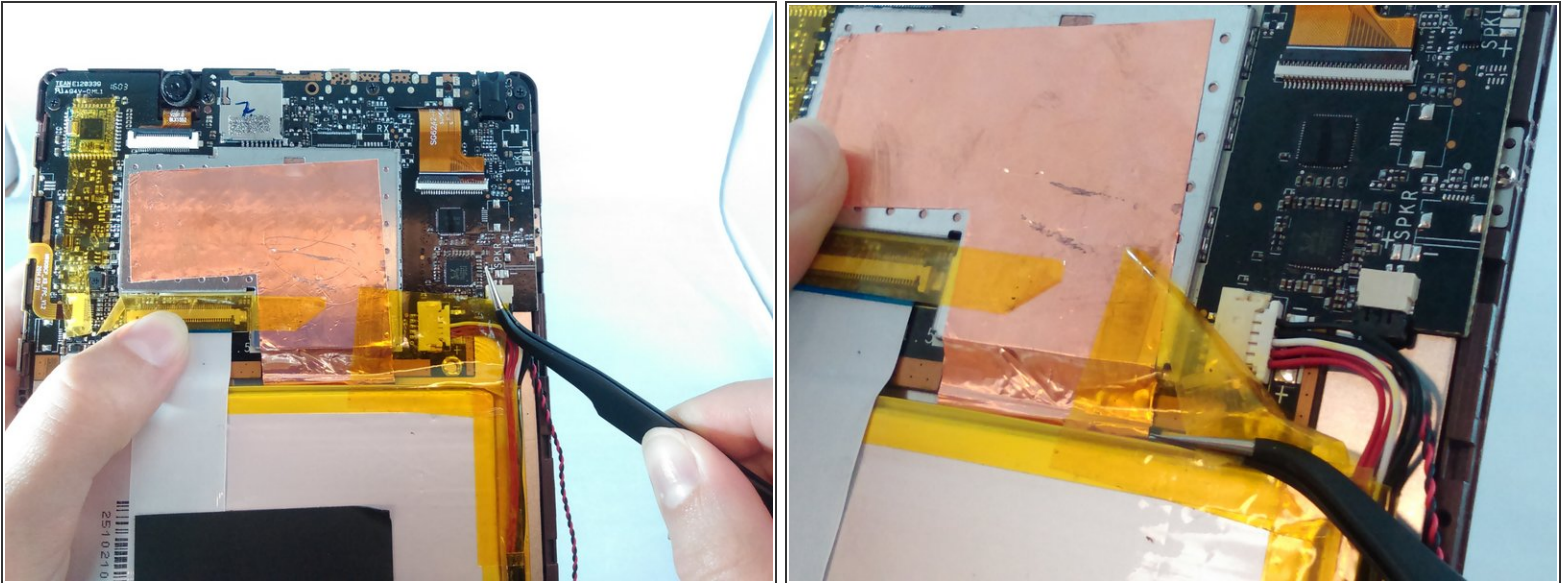
- Separate from the cover from the tablet.

Step 8



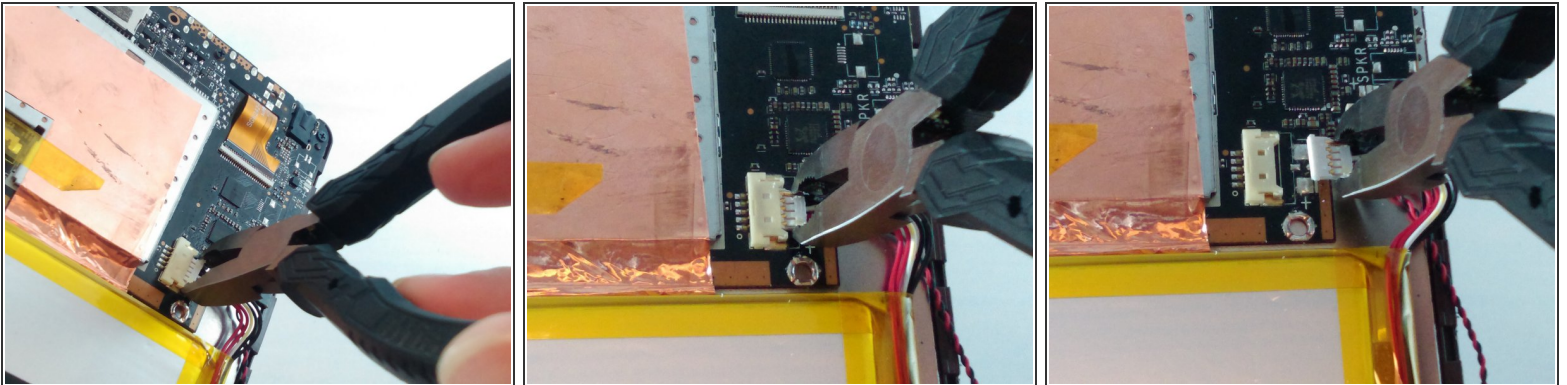
- Locate and carefully remove the yellow cellophane tape from the red and black speaker wires that connect the speaker to the edge of the motherboard.

Step 9



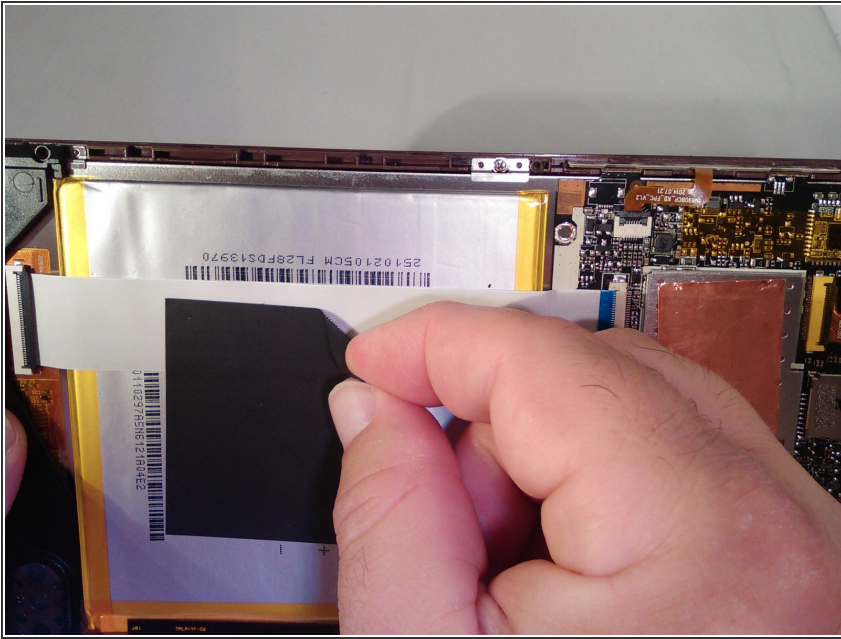
- Locate and carefully remove the yellow cellophane tape with tweezers from the battery connector and black and red speaker wires on the edge of the motherboard.

Step 10



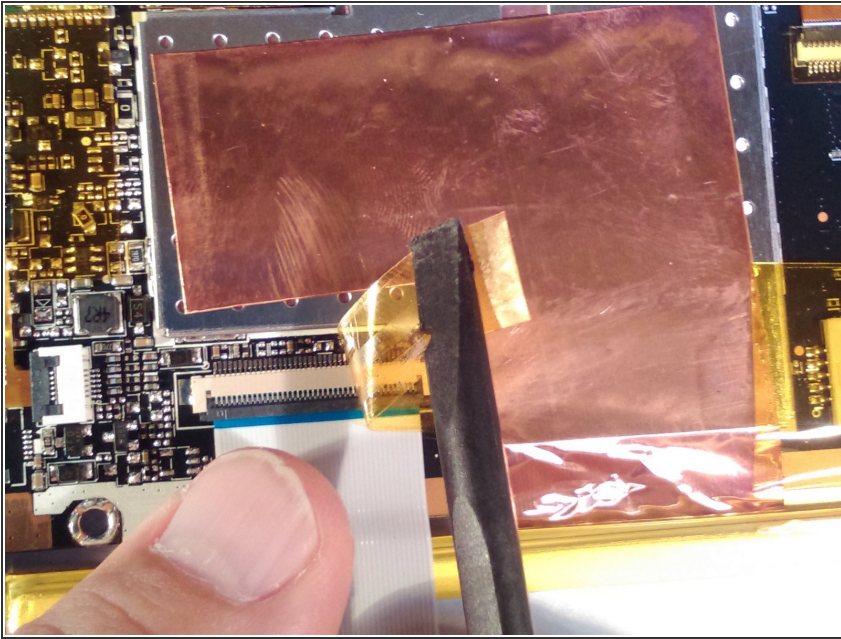
- Using small pliers, carefully disconnect the male battery connector from the motherboard.
- ⓘ If you are only replacing the front camera, skip to step 17 in the camera replacement guide and continue.

Step 11



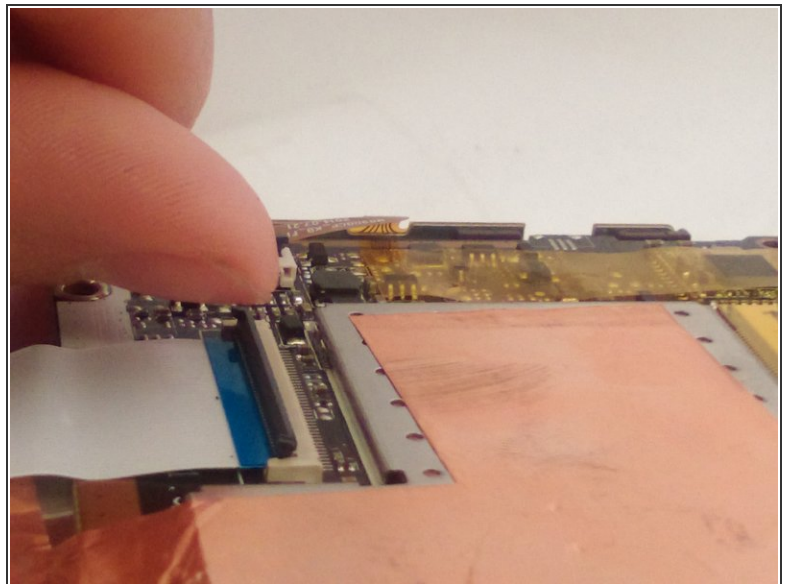
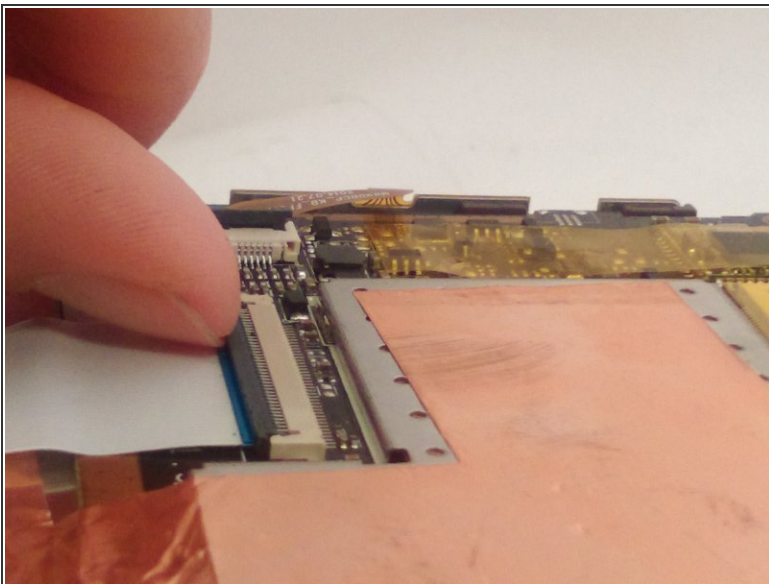
- ⚠ If the battery is leaking or bulging, stop and get away from it!
- Carefully remove the gray square pad glued to both the white ribbon cable and the battery by pulling slowly.

Step 12



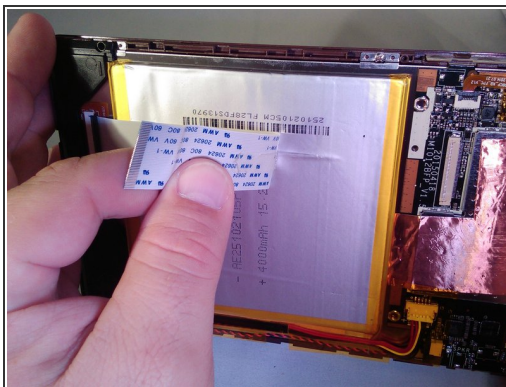
- Locate the white ribbon cable Zero Insertion Force (ZIF) connector between the battery and the motherboard, and peel the yellow cellophane tape off the connector.

Step 13



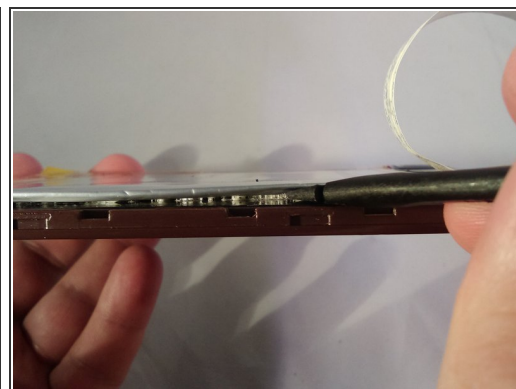
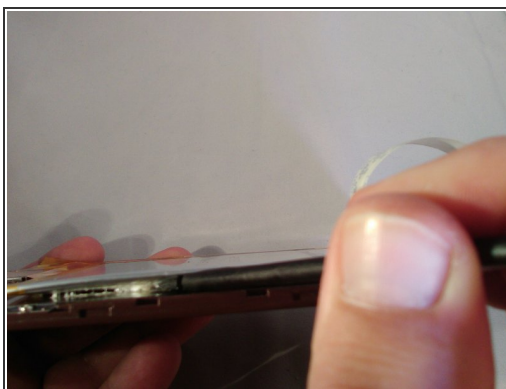
- Flip up the gray retainer clip on the white ribbon cable ZIF connector on the motherboard with your fingernail. If you do not have fingernails long enough, carefully use a black plastic spudger.

Step 14



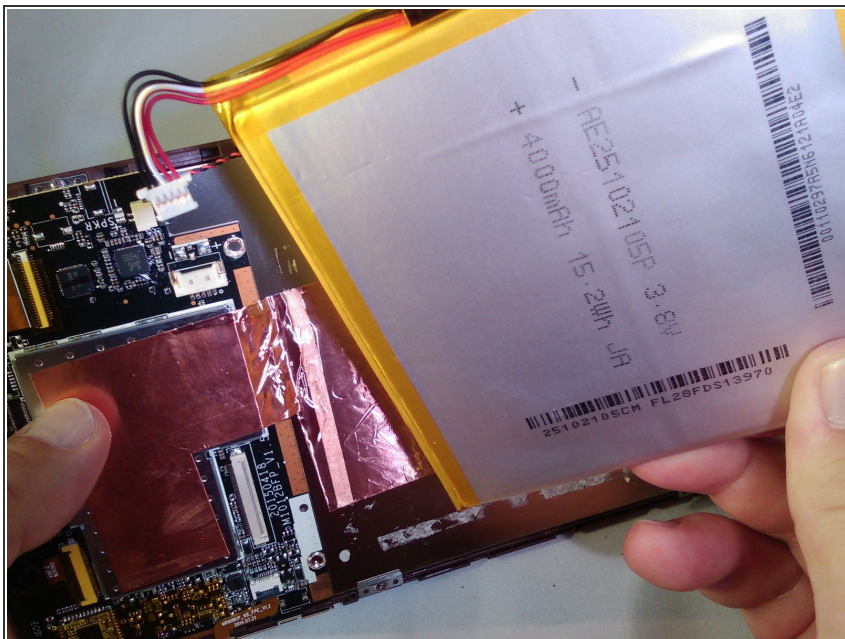
- Remove the white ribbon cable and carefully peel it off the battery.

Step 15



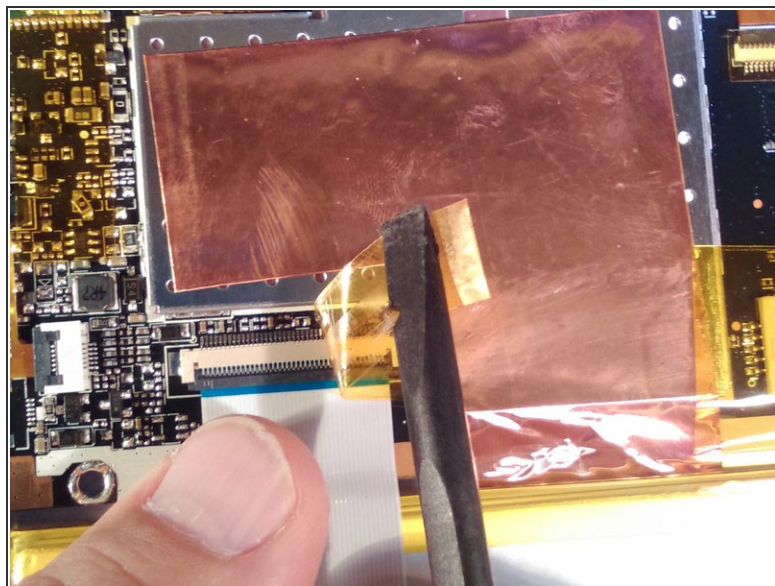
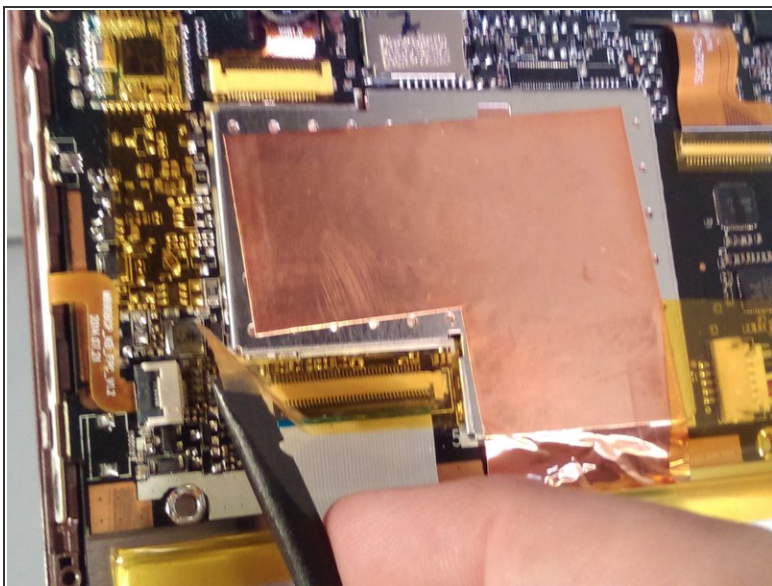
- Move the spudger in a left-to-right scraping motion to loosen the glue until the battery is separated from the tablet.

Step 16



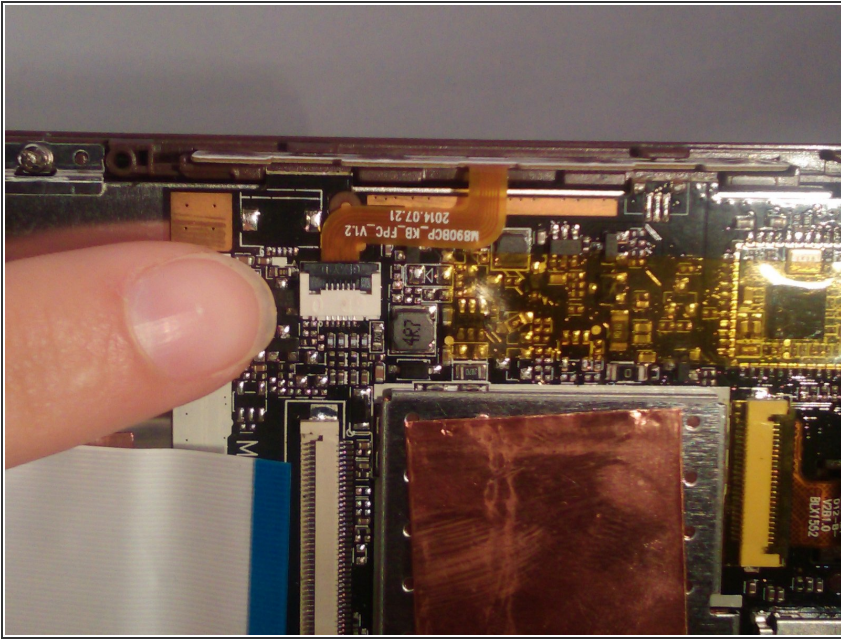
- Remove the battery.

Step 17 — Motherboard



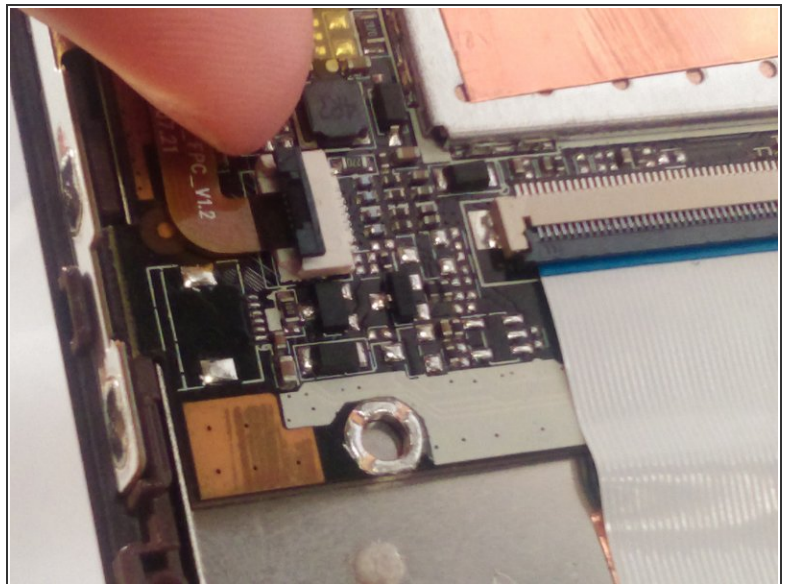
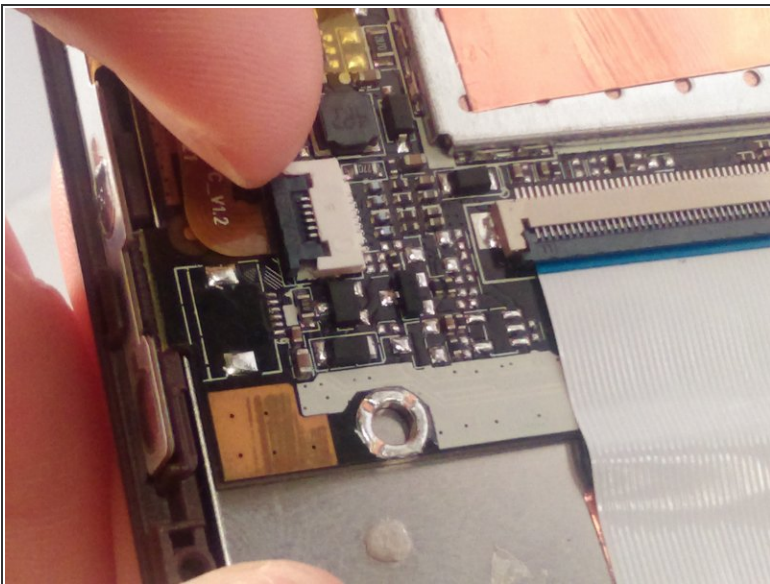
- Locate and remove the yellow cellophane tape from the display assembly ribbon cable ZIF connector.

Step 18



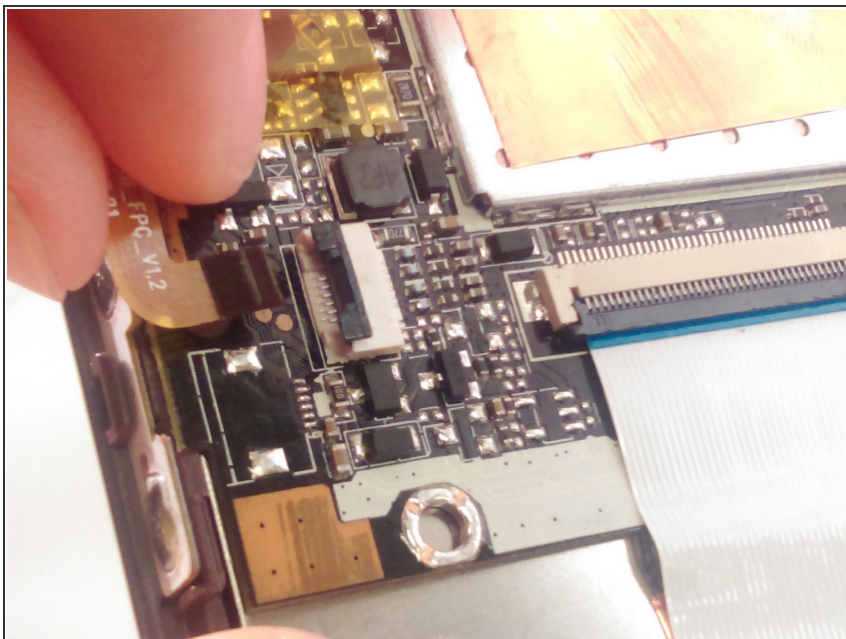
- Locate the volume, power, home button ribbon cable ZIF connector.

Step 19



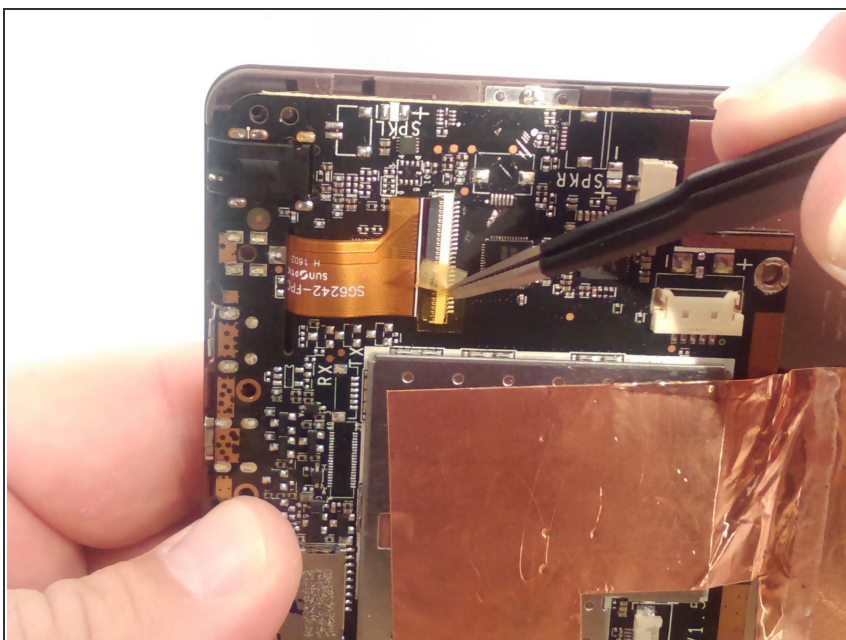
- Flip the ZIF connector retainer up with your fingernail. If you do not have fingernails long enough, carefully use the black plastic spudger.

Step 20



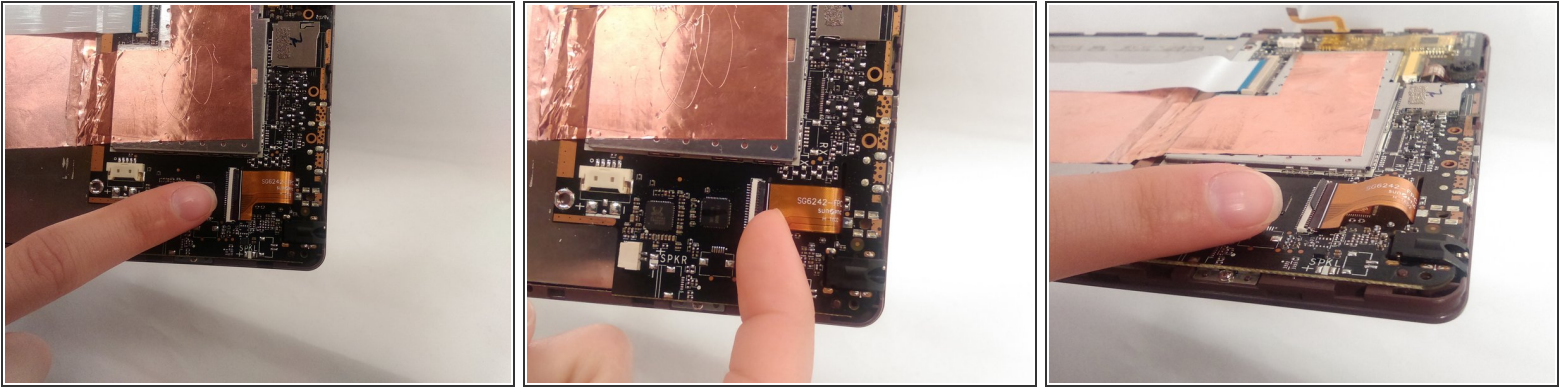
- Remove the ribbon cable by gently pulling on it.

Step 21



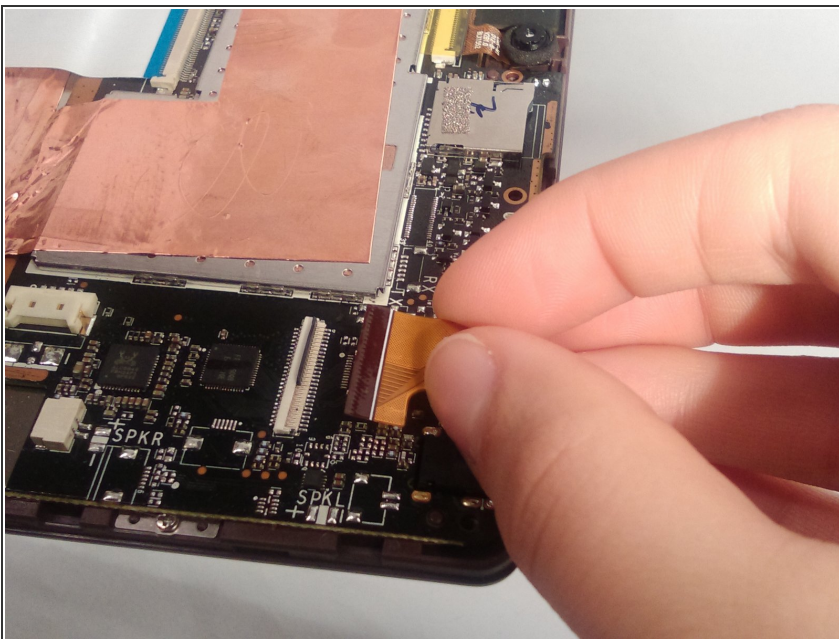
- Locate the Display Assembly ribbon cable ZIF connector, and using tweezers, remove the yellow cellophane tape.

Step 22



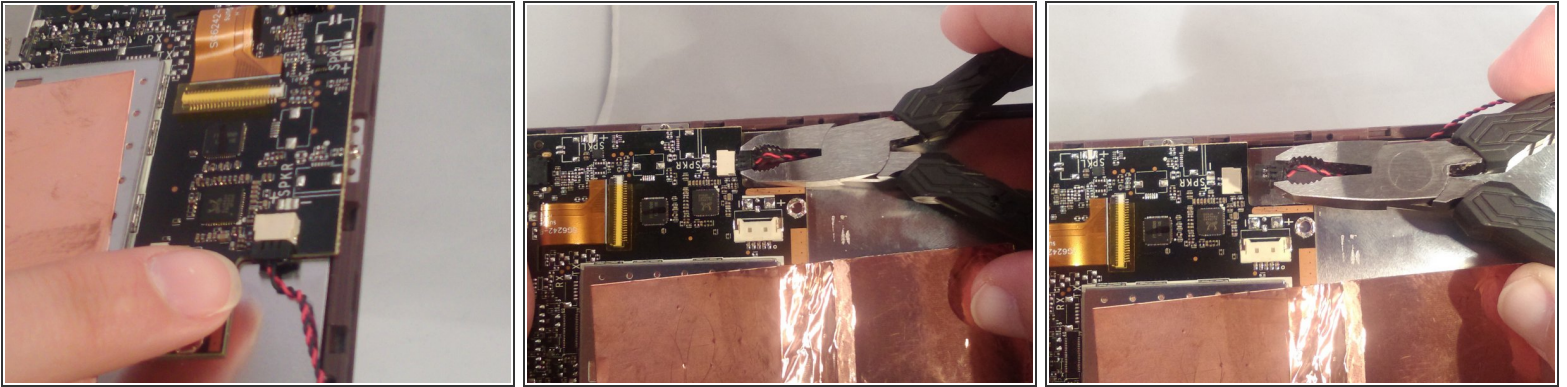
- Put your fingernail under the gray ZIF connector retainer and flip the retainer up. If you do not have fingernails long enough, carefully use a black plastic spudger.

Step 23



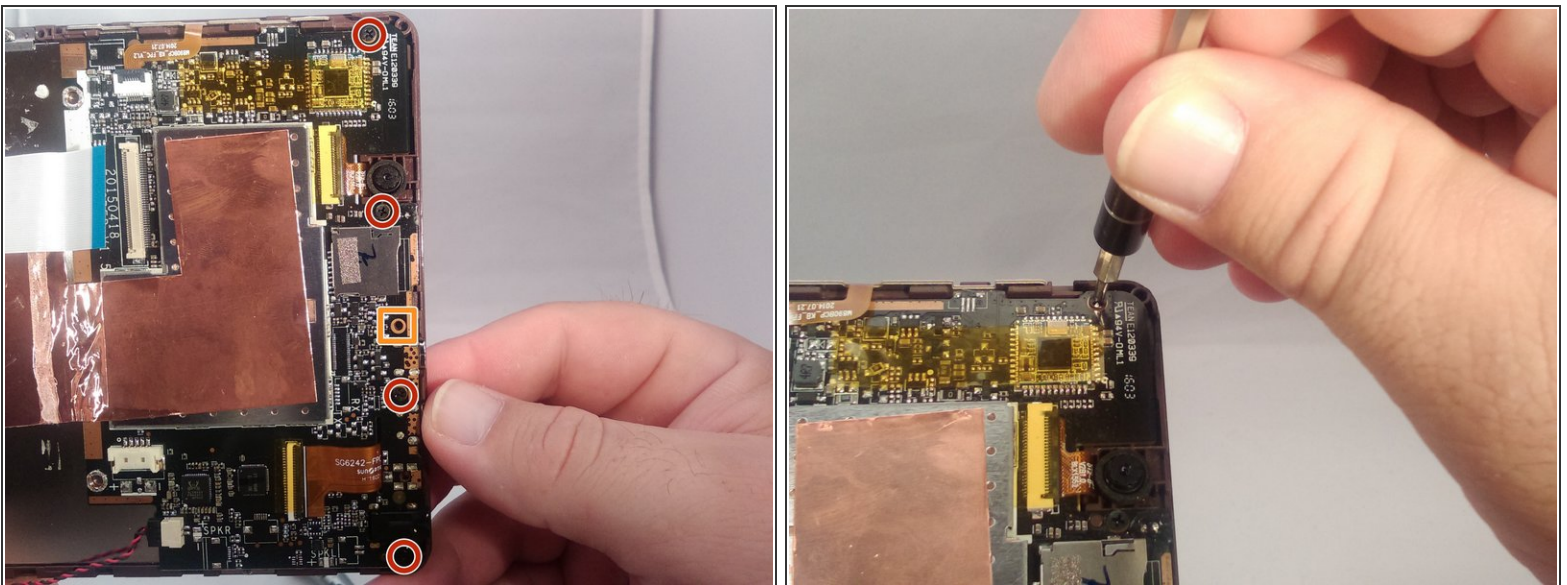
- Remove the Display Assembly ribbon cable by gently pulling on it.

Step 24



- Use small pliers to pull the connector, wiggling it a little as you pull it from its connection.

Step 25



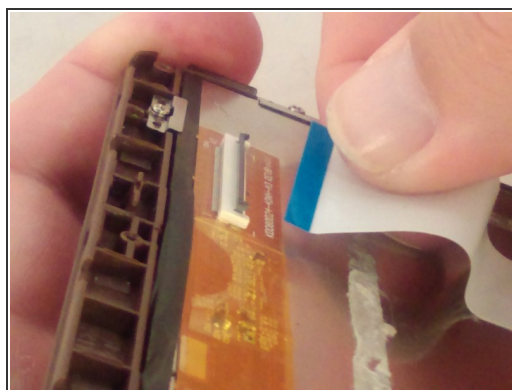
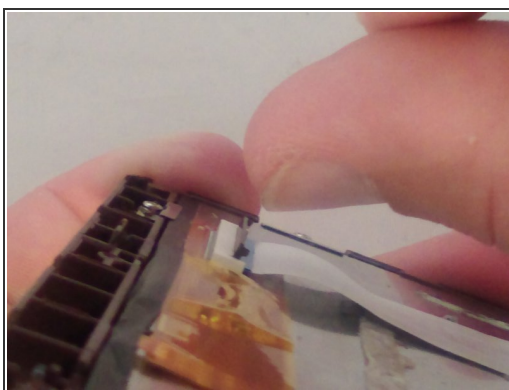
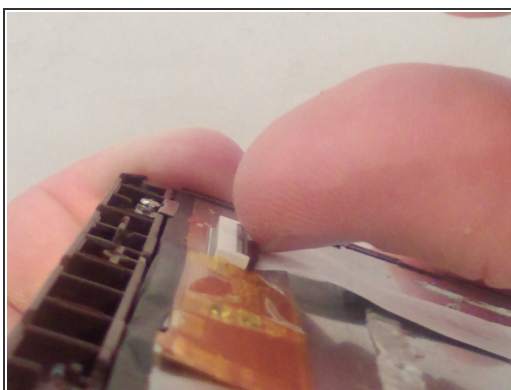
- Using a J00 screwdriver, remove the 4 black 4.0 mm screws.
- There is no screw at this location.

Step 26



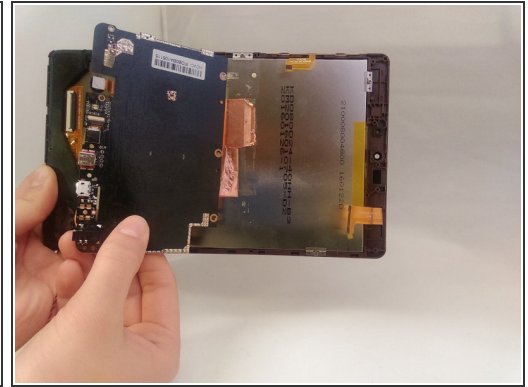
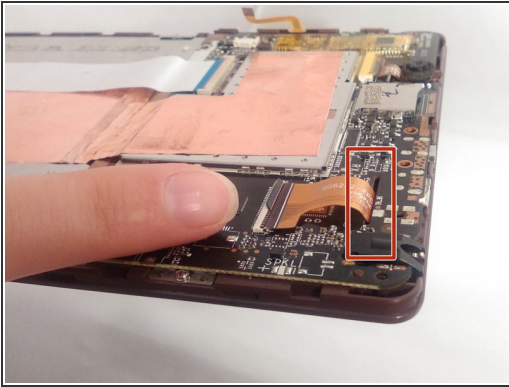
- Locate the ZIF connector to remove the white ribbon cable


Step 27



- To remove the white ribbon cable, put your fingernail under the gray ZIF connector retainer and flip the retainer up.

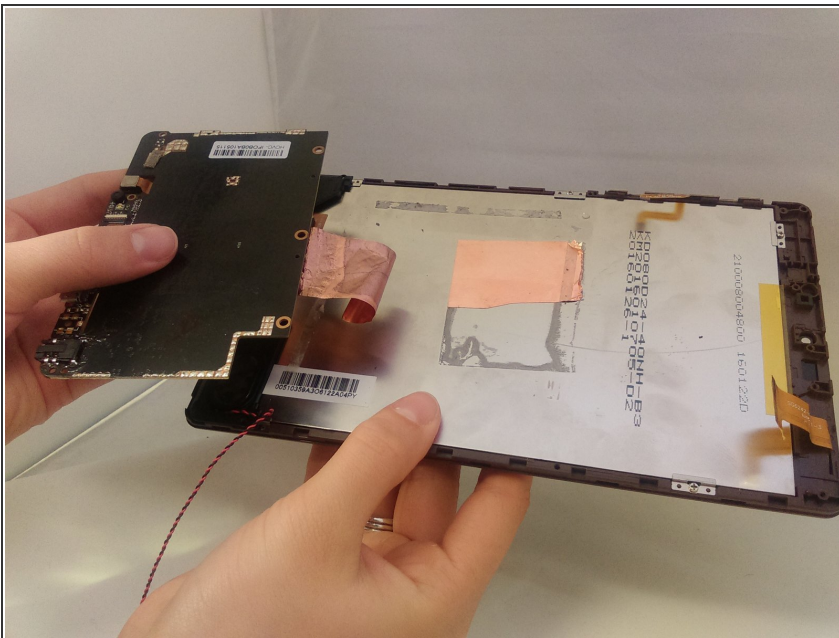
Step 28




 Ensure the ribbon cable does not get caught when removing the motherboard. Damage to the ribbon cable may result.

- Pull the motherboard back over the copper tape to tear the tape and remove the motherboard.

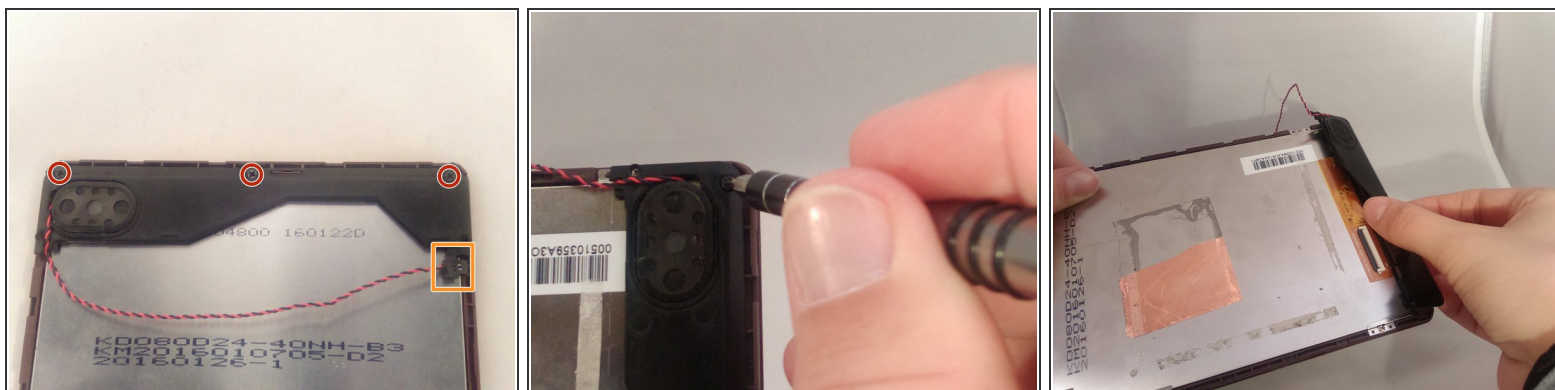
Step 29



- Remove the remaining copper tape from the back of the display assembly and the motherboard.

 Replace with new tape when reassembling.

Step 30 — Display Assembly



- Locate and remove the 3 black 4.0 mm screws on the speaker panel using a J00 screwdriver.
- Disconnect the speaker from the motherboard.
- Remove the panel.

Step 31



- Display Assembly

To reassemble your device, follow these instructions in reverse order.