



Written By: Paola



Page 1 of 5

INTRODUCTION

After disassembling the battery, the back panel needs to be disassembled in order to get access to other parts of the device.

TOOLS:

- [Spudger](#) (1)
 - [Phillips #1 Screwdriver](#) (1)
-

Step 1 — Battery



- Locate your device.
- Flip device onto its back.

Step 2



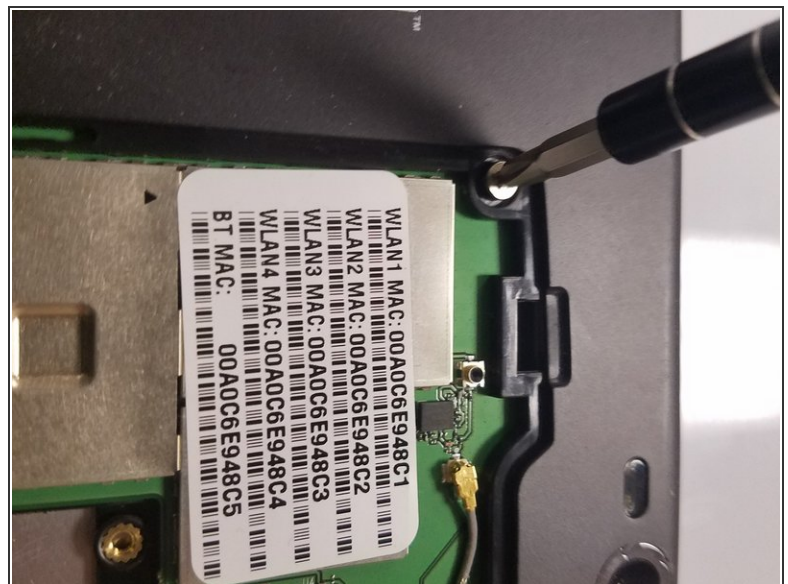
- Remove the tablet's back cover.

Step 3



- Locate the battery and remove it.
- If you wish to replace the battery you can do so here.

Step 4 — Back Panel



- Use the Phillips PH1 screwdriver to unscrew the five 4x2.5mm screws that hold the back cover.

Step 5



- Pop out the back cover.

To reassemble your device, follow these instructions in reverse order.