



# Craig CMP801 Front and Rear Facing Camera Replacement

Use this guide to replace the front and rear facing camera in your Craig CMP801.

Written By: Erin



---

## INTRODUCTION

This guide will walk you through the process of replacing the broken front or rear facing camera of a Craig CMP801.

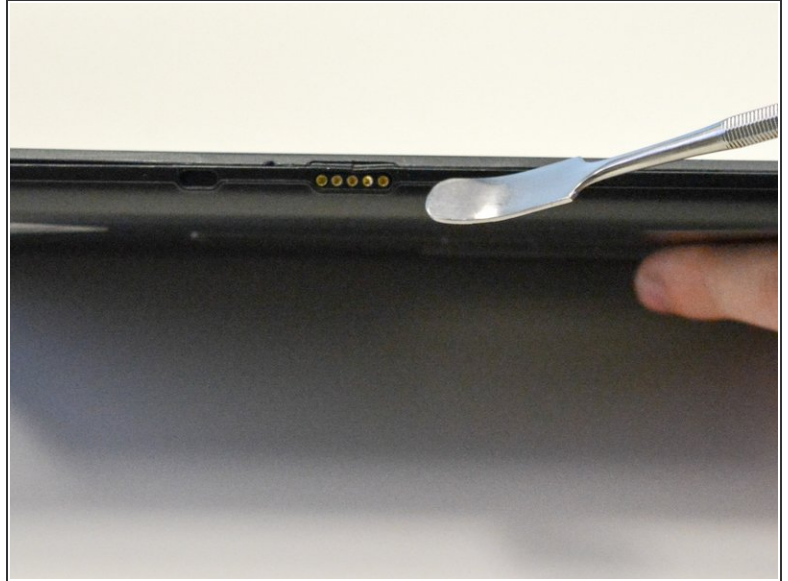
---



### TOOLS:

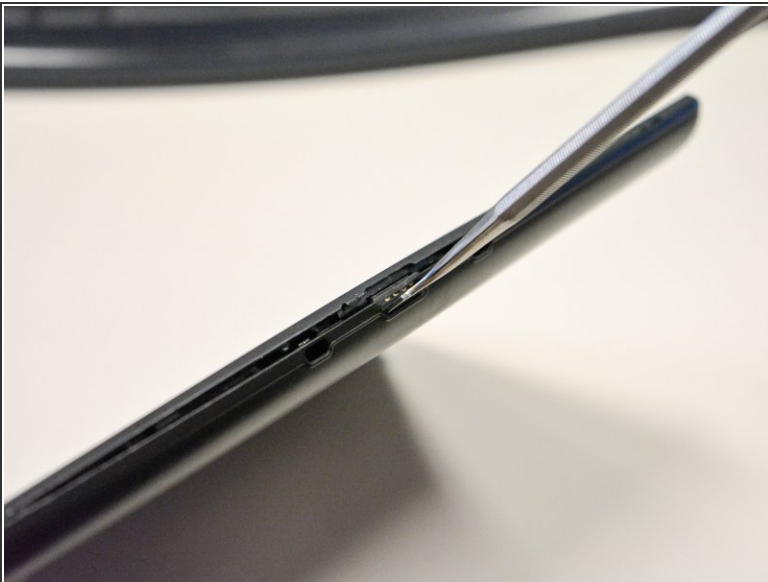
- [Metal Spudger](#) (1)
  - [iFixit Opening Tools](#) (1)
-

## Step 1 — Back Cover



- Locate the opening line between the cover and the device. Then locate the groove near the charging port.

## Step 2



- Use a metal spudger to separate the back cover from the front touch screen.
- To do this, place the metal spudger in between the groove near the charging port of the device to unlatch the first clip.

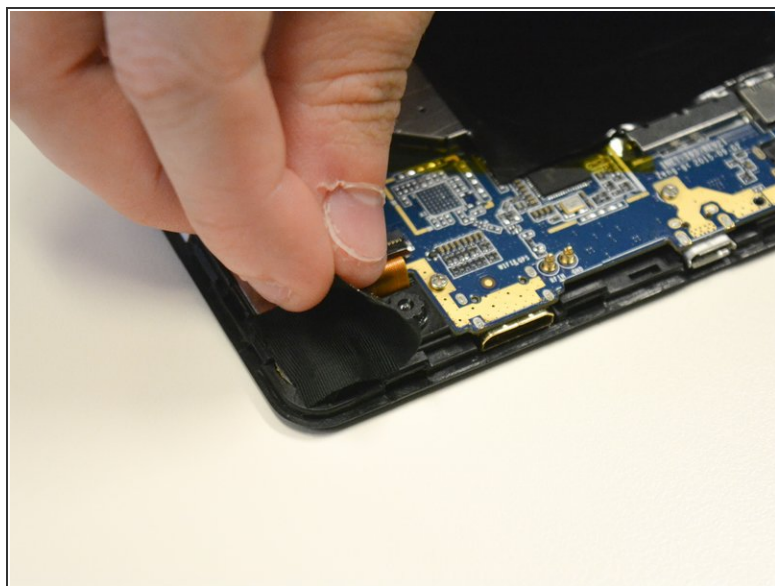


## Step 3



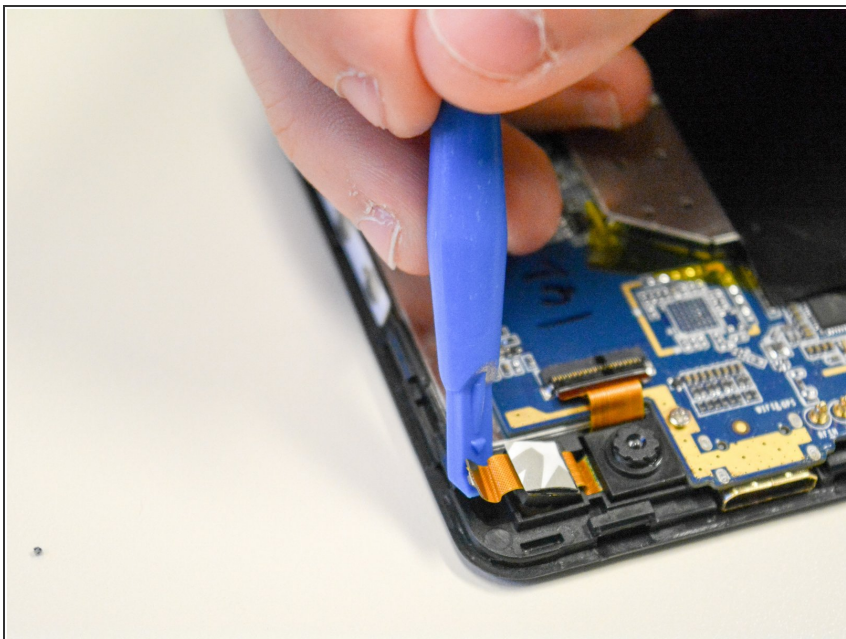
- Continue to separate all of the clips around the device until the back cover comes off completely.

## Step 4 — Front and Rear Facing Camera



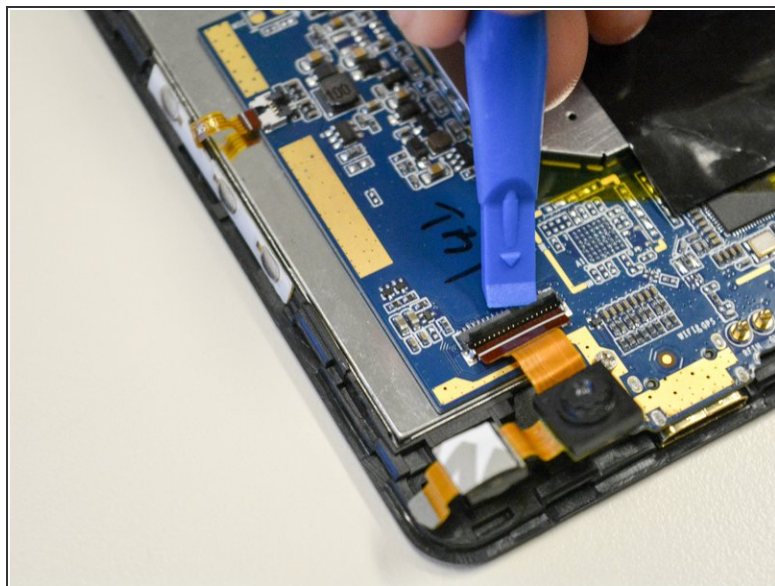
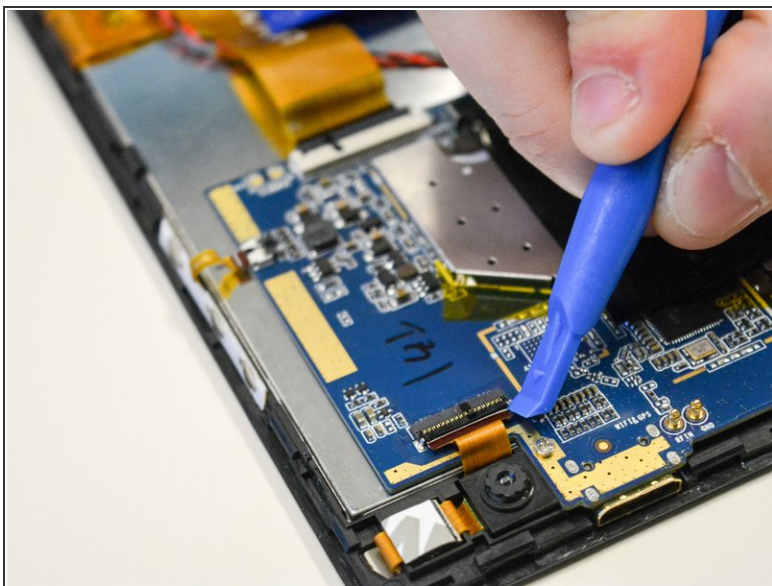
- Once the back cover is removed, gently remove the black tape that covers the front and rear facing camera.

## Step 5



- Near the edge of the device, lift up the tab connected to the front-facing camera.

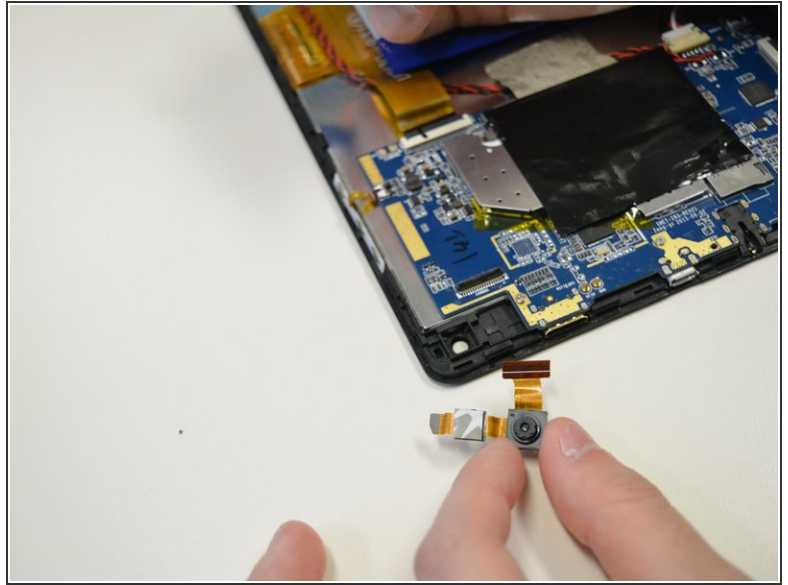
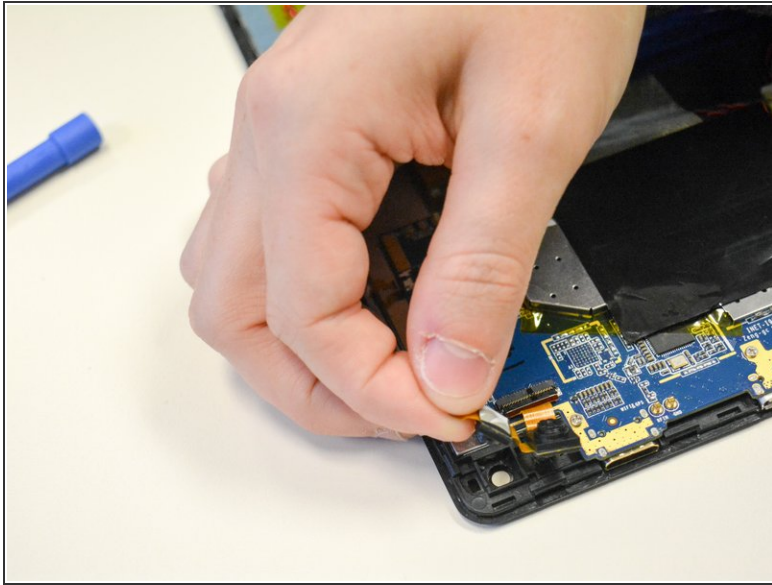
## Step 6



- Locate the black flap that covers and holds down the tab connected to the rear-facing camera.
- Flip the flap up to release the tab.



## Step 7



- Gently pull on the tab connected to the front-facing camera to release both the front and rear-facing cameras.

To reassemble your device, follow these instructions in reverse order.