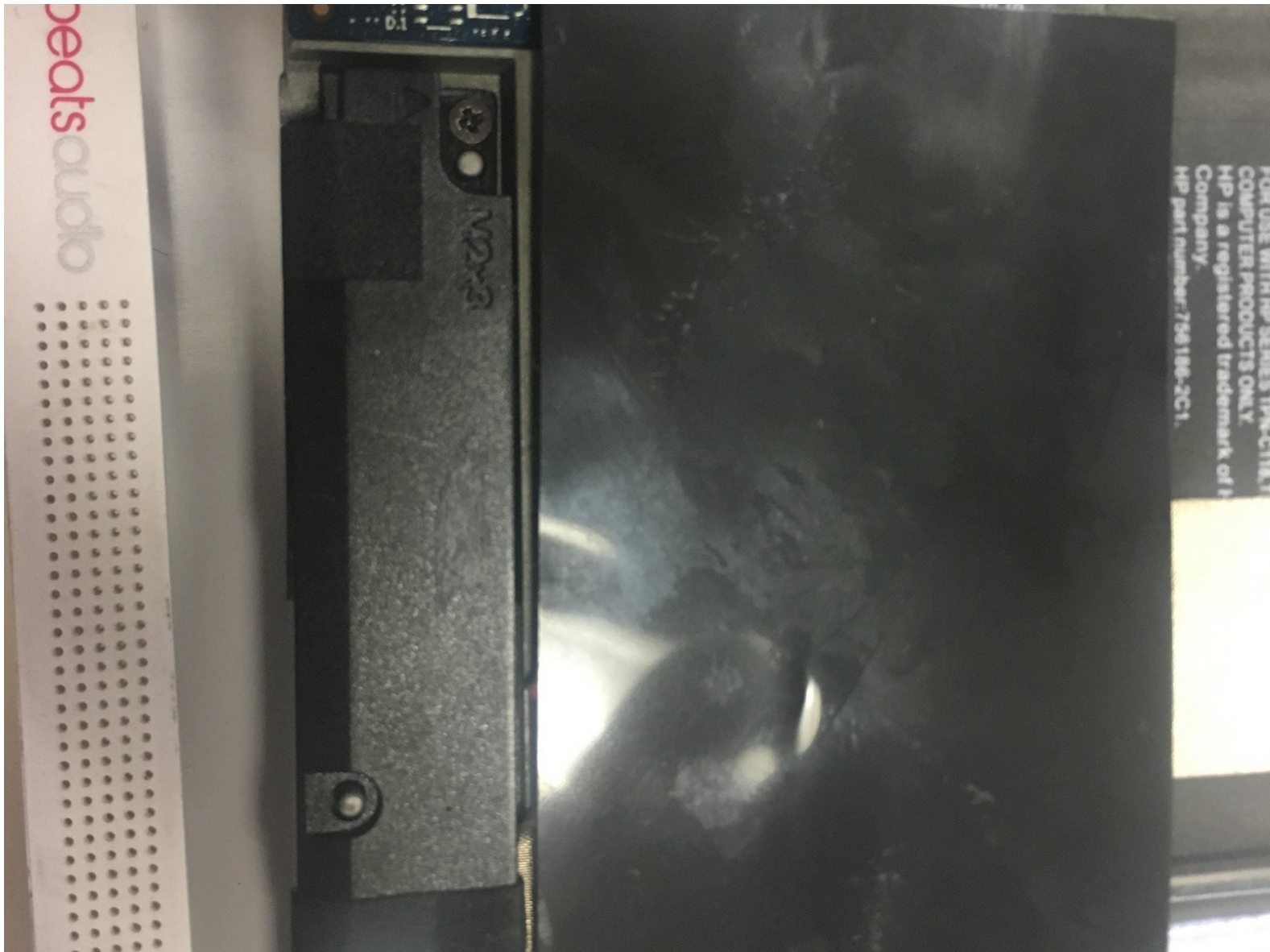




Written By: Kim



INTRODUCTION

This guide will help you learn how to replace the speaker in the HP Split 13-r010dx.



TOOLS:

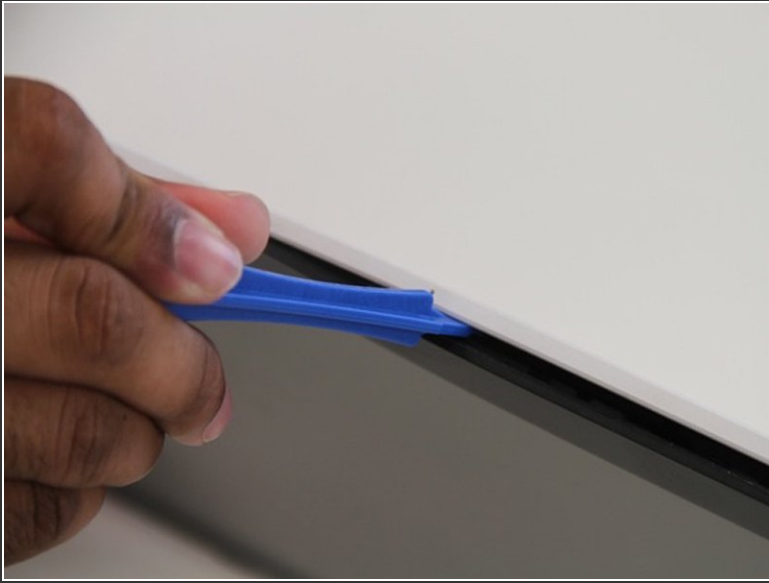
- [iFixit Opening Tool](#) (1)
 - [Phillips #0 Screwdriver](#) (1)
 - [Tweezers](#) (1)
-

Step 1 — Front and Back Panel



- Locate the four screws at the bottom of the device. (Note that the keyboard attachment is missing from this device.)
- Use a Philips head #0 screwdriver to remove each of the screws (Size: 4mm)

Step 2



- Gently wedge the plastic opening tool in between where the display and back panel meet.
- Slowly and gently apply force to the plastic opening tool in a downwards motion to loosen the front panel from the back panel.
- Rotate the device so that the side is facing up and repeat the previous step for the sides.
- Do NOT attempt to wedge the plastic opening tool on the bottom . Once the sides and top are loose you are ready to continue to the next step.

Step 3



- Gently and slowly pull the front and back panel away from each other (in opposite directions). (Pulling them apart will not separate the two panels)
- Only separate the panels by a few inches from each other so that there is room to separate the front and back panel in the next step. Proceed to the next step.

Step 4



- Hold the back panel firmly and pull the front panel upwards to completely separate the front panel from the back panel.
- The device is now ready to be repaired or replacements installed.

Step 5 — Speaker



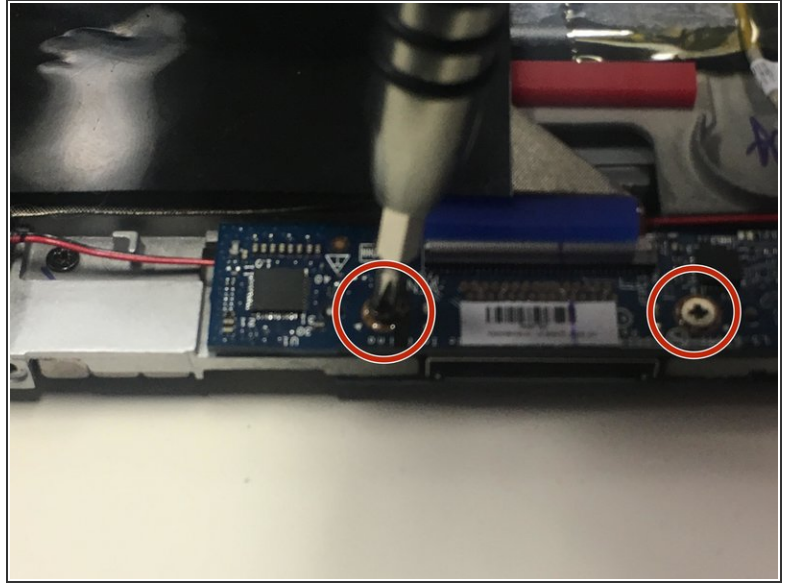
- Using the PH 0 screw head unscrew each of the screws located into the upper right of the speakers.

Step 6



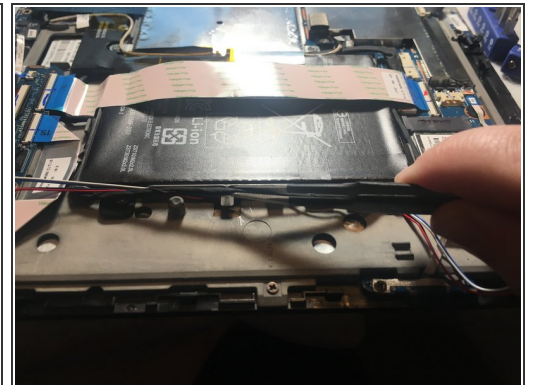
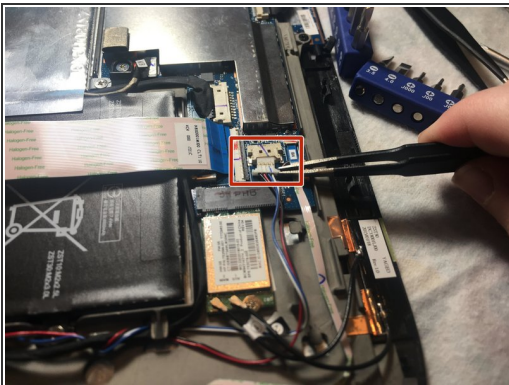
- After unscrewing the speakers, gently lift the speaker out using the tweezers.

Step 7



- Once each speaker is out, remove the center plate in between the speakers, using the PH0 bit.

Step 8



- After removing the the speakers completely, using the tweezers gently remove the micro chip connection from the system.
- Then untwist the wires from the thick black cord.

⚠ Be careful when pulling the cord underneath the plug-ins marked in red. They may unplug.

To reassemble your device, follow these instructions in reverse order.