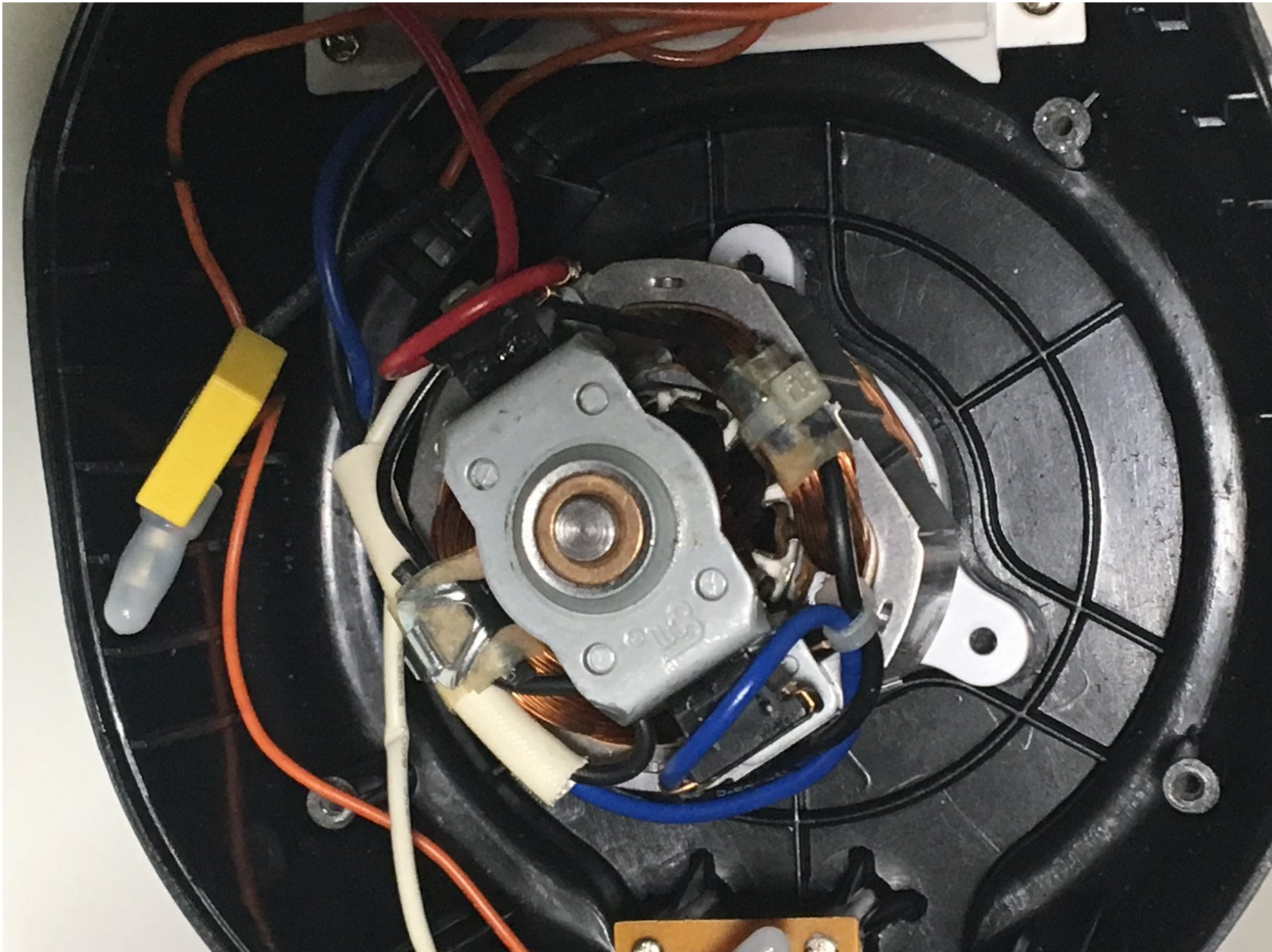




# Cuisinart Mini-Prep DLC-2A Motor Replacement

Use this guide to replace the motor in your Cuisinart Mini-Prep DLC-2A.

Written By: Eduardo Torres



---

## INTRODUCTION

This guide will lead you through the process of replacing a dead or dying motor in your Cuisinart Mini-Prep DLC-2A.

---



### TOOLS:

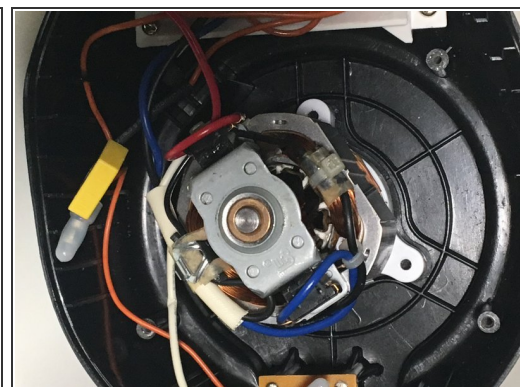
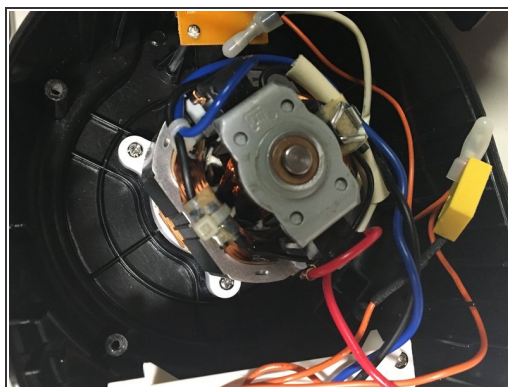
- [Phillips #1 Screwdriver](#) (1)
  - [Electric Screwdriver](#) (1)
-

## Step 1 — Cuisinart Mini-Prep DLC-2A Case Disassembly



- Remove the back panel using a Phillips #1 Screwdriver on the four screws that hold it in place.

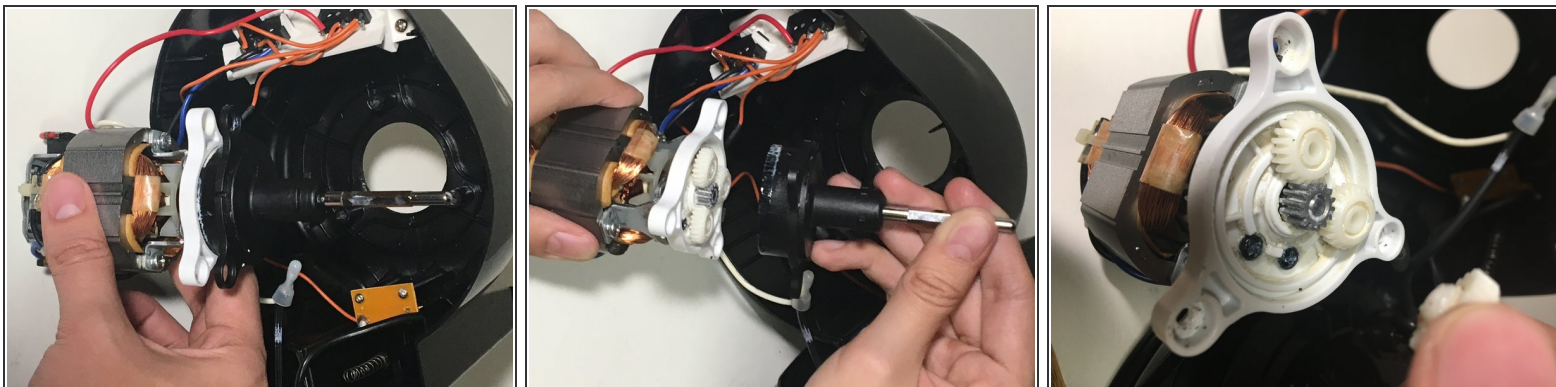
## Step 2 — Motor



- Remove the three screws that hold the motor to the top case using a Phillips #1 screwdriver.

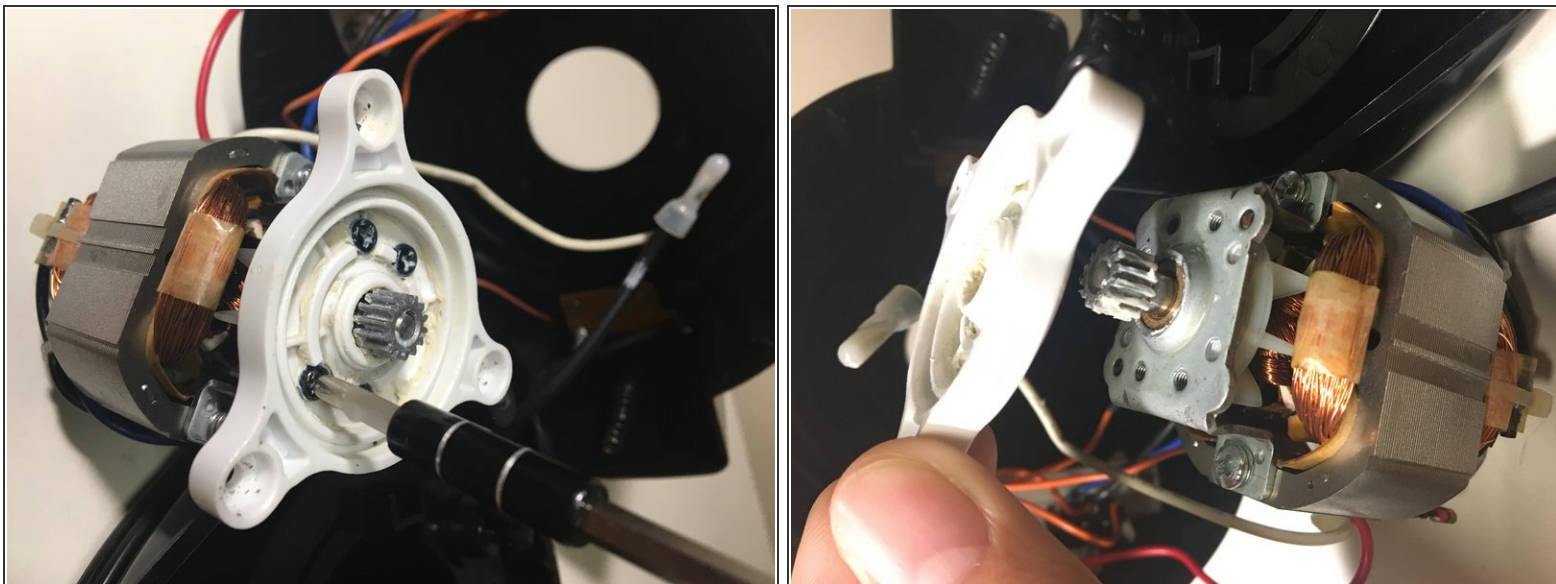


### Step 3



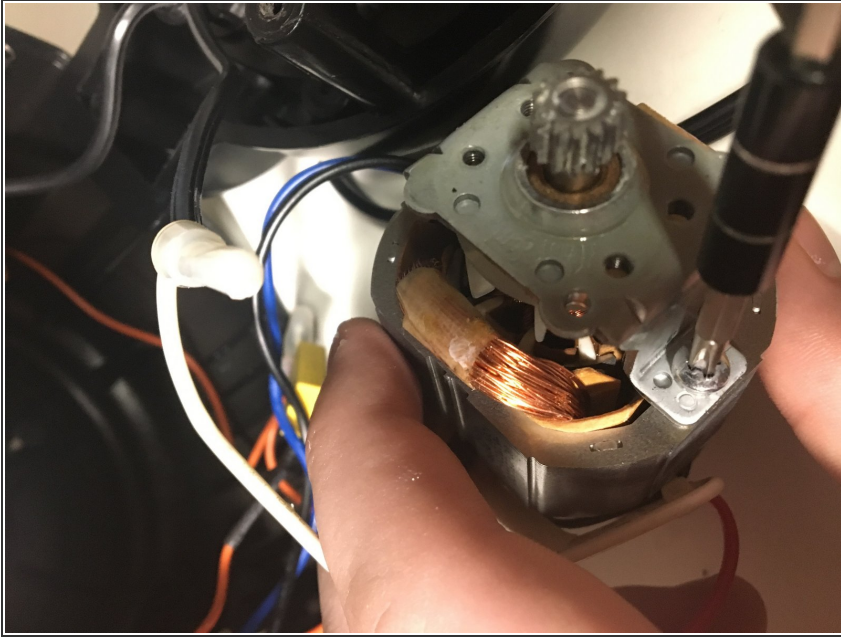
- Pull out the metal piece from the casing.
- Pull apart the plastic casing that contains the rod.
- Take off the plastic gears.

### Step 4



- Use the Phillips #1 screwdriver to take off the screws that hold the white plastic to the metal piece.
- Pull apart the white plastic from the metal piece.

## Step 5



- Use an electric screwdriver with a Phillips #1 head to take off the top metal piece.

To reassemble your device, follow these instructions in reverse order.