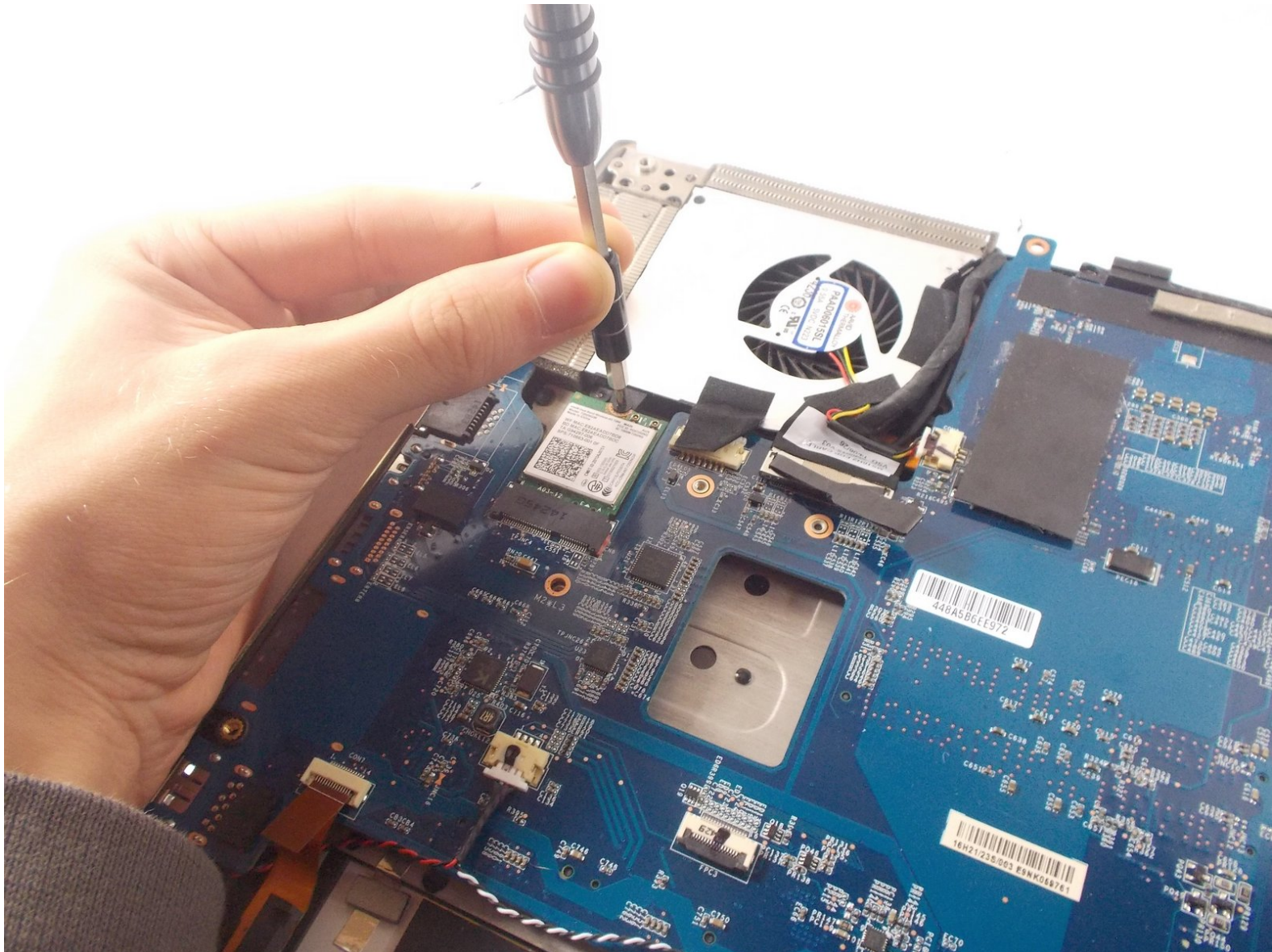




# MSI GS60 Ghost Pro 4K Gold Edition Wi-Fi Card Replacement

This guide will detail how to replace the Wi-Fi card inside the MSI GS60 Ghost Pro 4K Gold Edition.

Written By: Jordan Williams



This document was generated on 2020-11-28 06:11:21 AM (MST).

# INTRODUCTION

This guide will detail how to replace the Wi-Fi card inside the MSI GS60 Ghost Pro 4K Gold Edition.



## TOOLS:

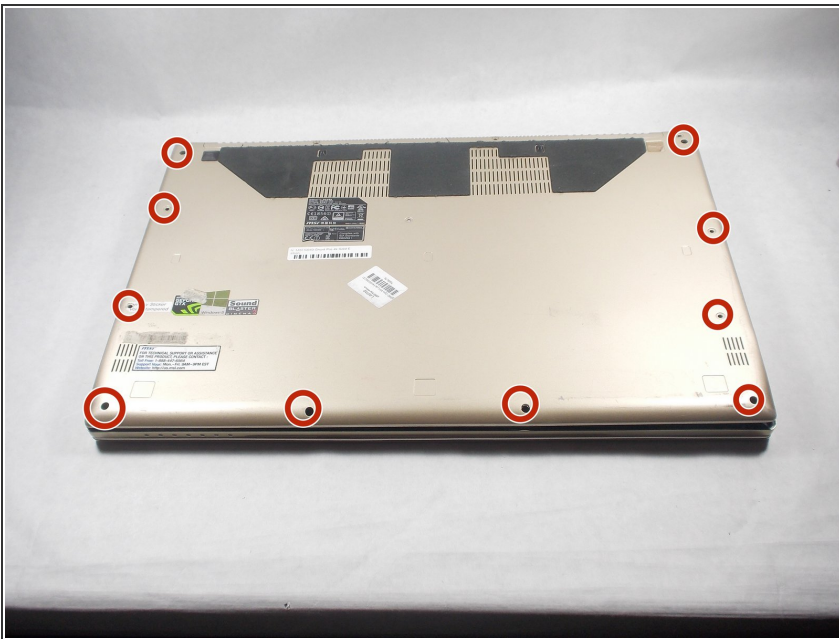
- [iFixit Opening Tools](#) (1)
  - [Phillips #0 Screwdriver](#) (1)
-

## Step 1 — Back Panel



- Place this device back panel facing up.

## Step 2



- Using the screwdriver, unscrew the highlighted 1.2mm Phillips head #0 screws which secure the back panel into place.

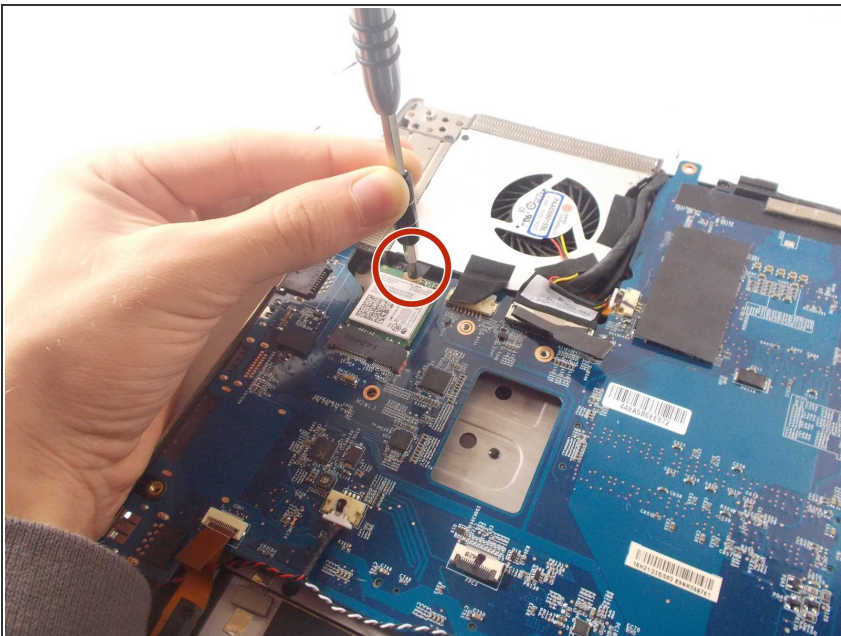


### Step 3



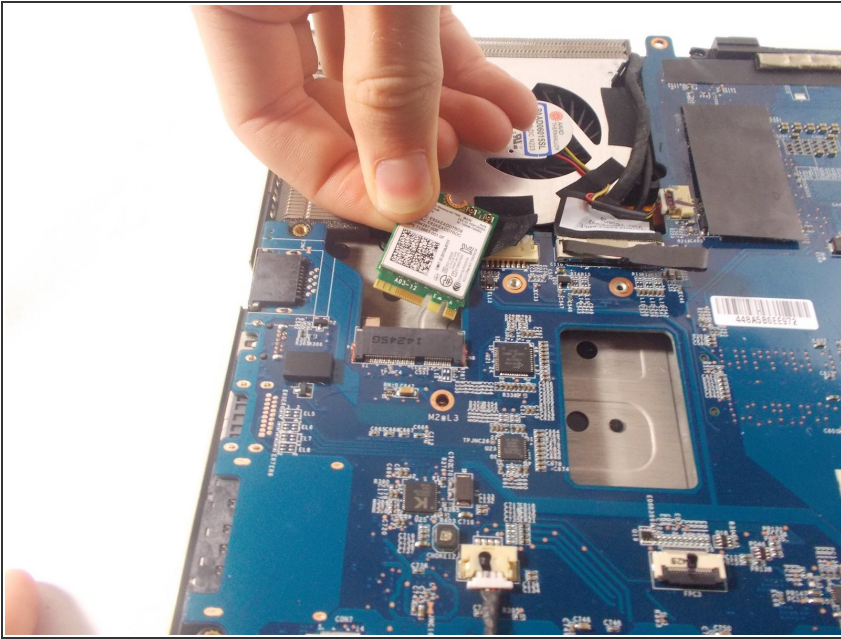
- Using the plastic opening tools, separate the back panel from the rest of the device.
- Do this by firmly pressing the head of the tool into the space between the back panel, and the rest of the device.

### Step 4 — Wi-Fi Card



- Use the screwdriver to unscrew the 0.5mm Phillips #0 screw holding the Wi-Fi card in place.

## Step 5



- Take out the Wi-Fi card.
- Replace the faulty Wi-Fi card with a new Wi-Fi card.

To reassemble your device, follow these instructions in reverse order.