



Asus Chromebook C300MA-BBCLN12

Keyboard Replacement

Replace a defective keyboard in the Asus Chromebook C300MA-BBCLN12.

Written By: Brooke Austin



INTRODUCTION

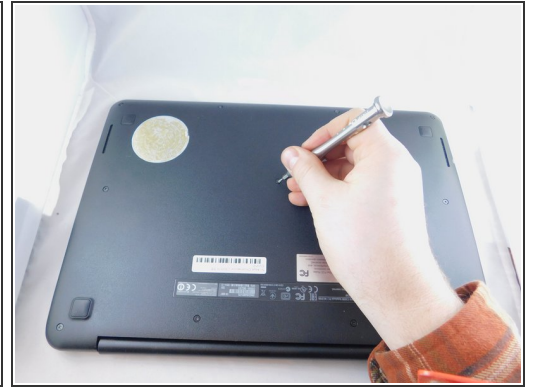
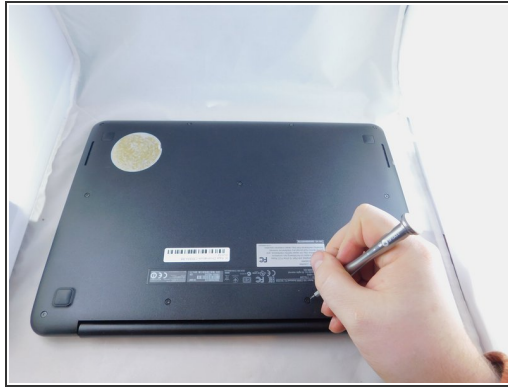
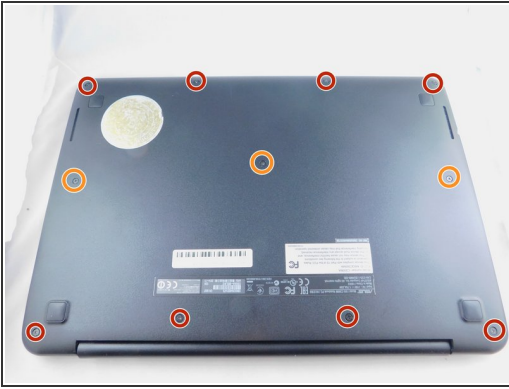
This repair guide provides step-by-step instructions for replacing the keyboard of the ASUS Chromebook C300M-BBCLN12 keyboard. The repair may be required if the keyboard is no longer functional.



TOOLS:

- [Phillips #00 Screwdriver](#) (1)
 - [Tweezers](#) (1)
 - [iFixit Opening Tools](#) (1)
 - [Spudger](#) (1)
-

Step 1 — Keyboard



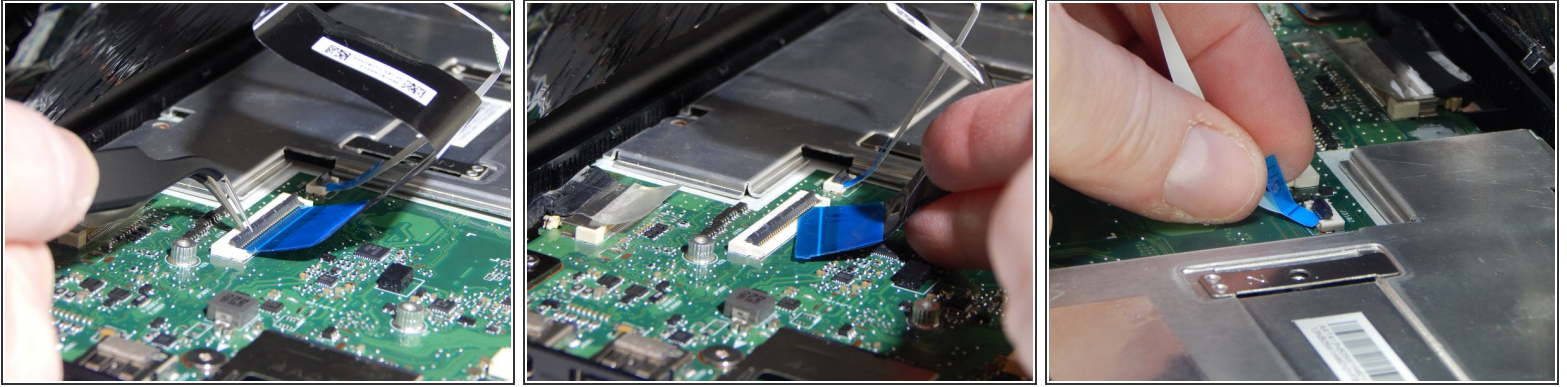
- Remove the eight 9.0mm PH00 Phillips screws along the perimeter of the bottom housing.
- Remove the three 6.0mm PH00 Phillips screws from the center of the bottom housing.

Step 2



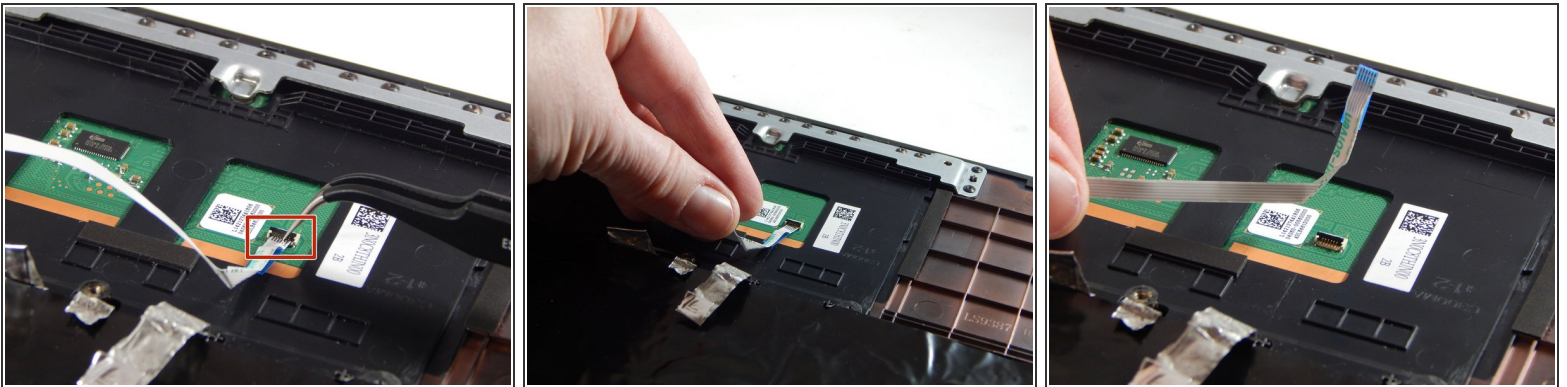
- Separate the palm rest assembly from the bottom housing using the plastic opening tool.
- ⓘ It is recommended that you start from a corner and run the tip of the plastic opening tool along the edge of the housing.
- ⚠ Lift the palm rest assembly slowly to prevent damaging the two cables connecting it to the motherboard.

Step 3



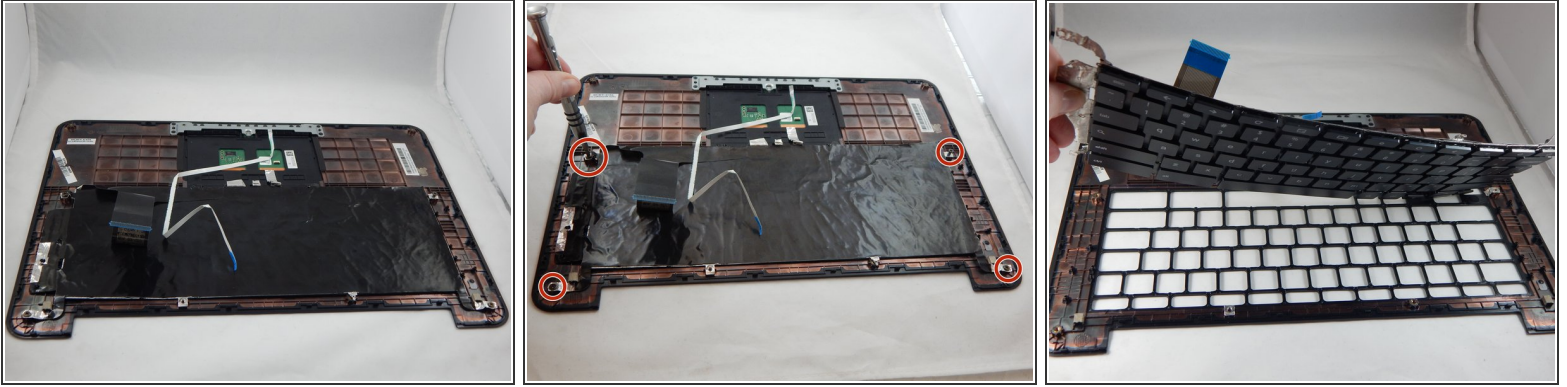
- Flip back the hinges on the connectors that secure the wide black cable and the narrow white cable using the tweezers.
- Disconnect the wide black cable from the motherboard by pulling the blue cable tab straight out of the connector.
- Disconnect the white ribbon cable from the motherboard by pulling the blue cable tab straight out of the connector.

Step 4



- Flip back the hinge on the connector that secures the white ribbon cable to the underside of the palm rest assembly using the tweezers.
- Disconnect the white ribbon cable from the palm rest assembly by pulling the cable straight out of the connector.

Step 5



- Remove the palm rest assembly from the bottom housing and lay it on a flat surface with the keyboard facing downward.
- Remove the four 5.0mm PH00 Phillips screws securing the keyboard to the palm rest assembly.
- Separate the keyboard from the palm rest assembly.

To reassemble your device, follow these instructions in reverse order.