



HP Pavilion 15-ab165us Wi-Fi Card Replacement

This guide will teach you how to safely remove a defective or damaged Wi-Fi card in the HP Pavilion 15-ab165us laptop.

Written By: Grace Chapek



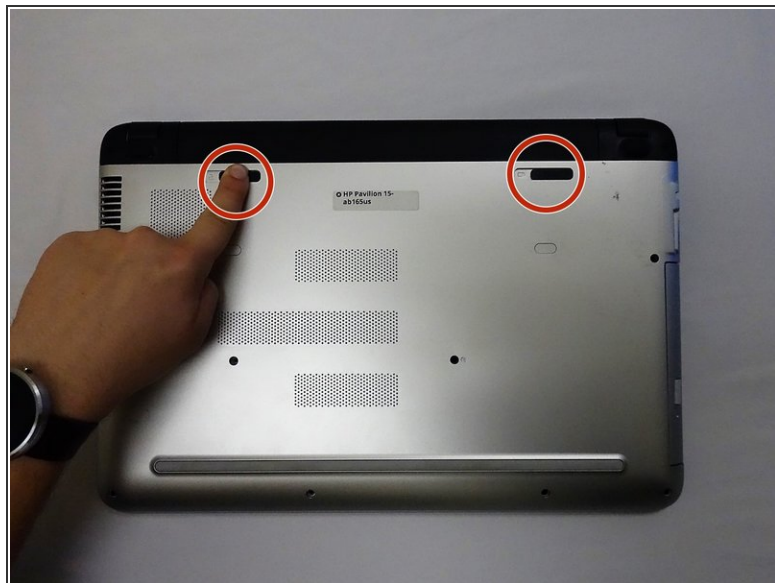
INTRODUCTION

This guide will teach you how to safely remove a defective or damaged Wi-Fi card in the HP Pavilion 15-ab165us laptop.

TOOLS:

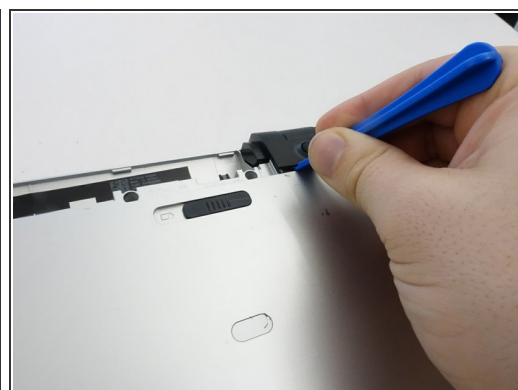
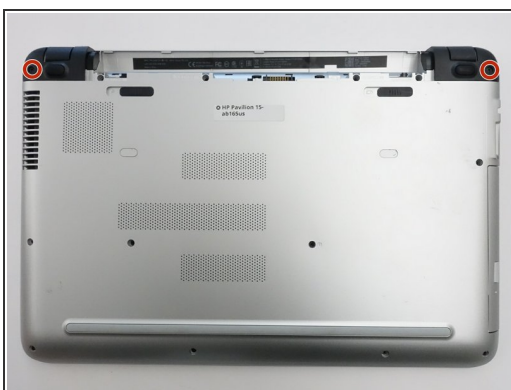
- [Phillips #00 Screwdriver](#) (1)
 - [iFixit Opening Tools](#) (1)
 - [Metal Spudger](#) (1)
 - [Spudger](#) (1)
 - [Phillips #1 Screwdriver](#) (1)
-

Step 1 — Battery and Back Cover



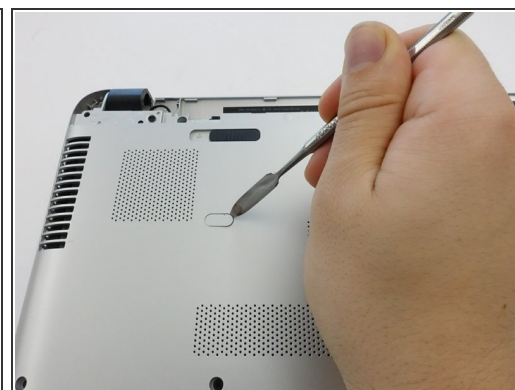
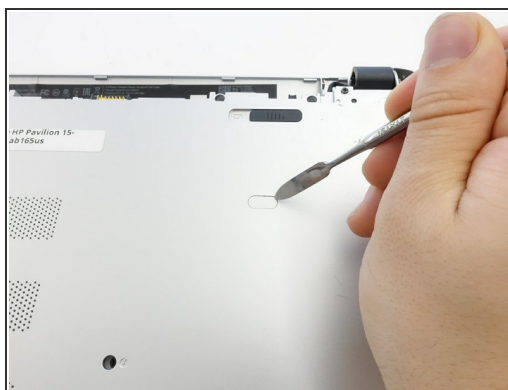
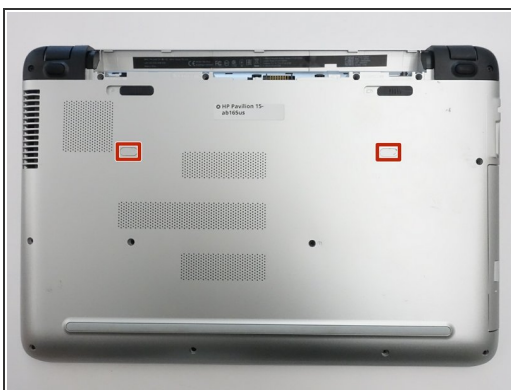
- Flip the computer over so that the bottom cover is facing you.
- Slide the two locks to the "unlock" position and remove the battery.

Step 2



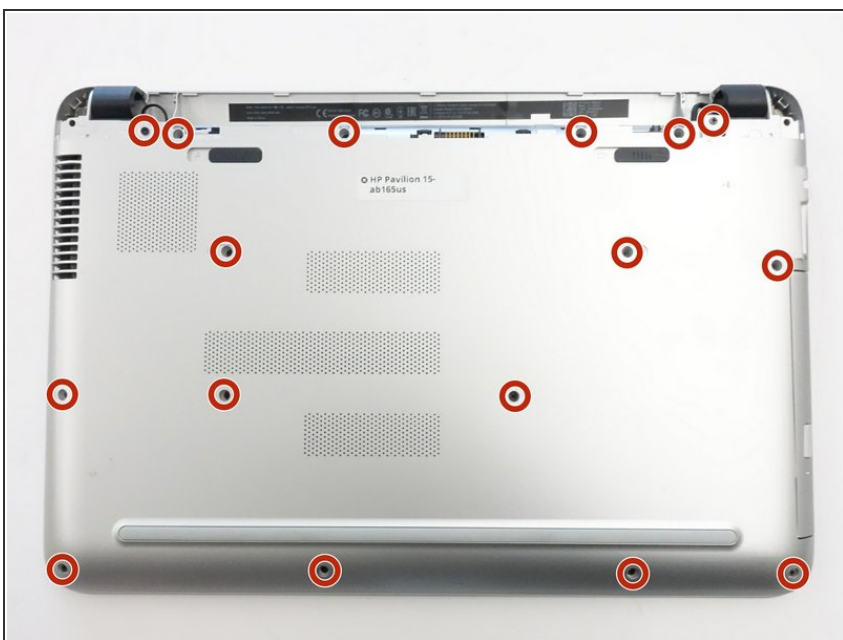
- Remove the two 8mm screws underneath with a Phillips #1 screwdriver.
- Use a plastic opening tool to remove the plastic feet.

Step 3



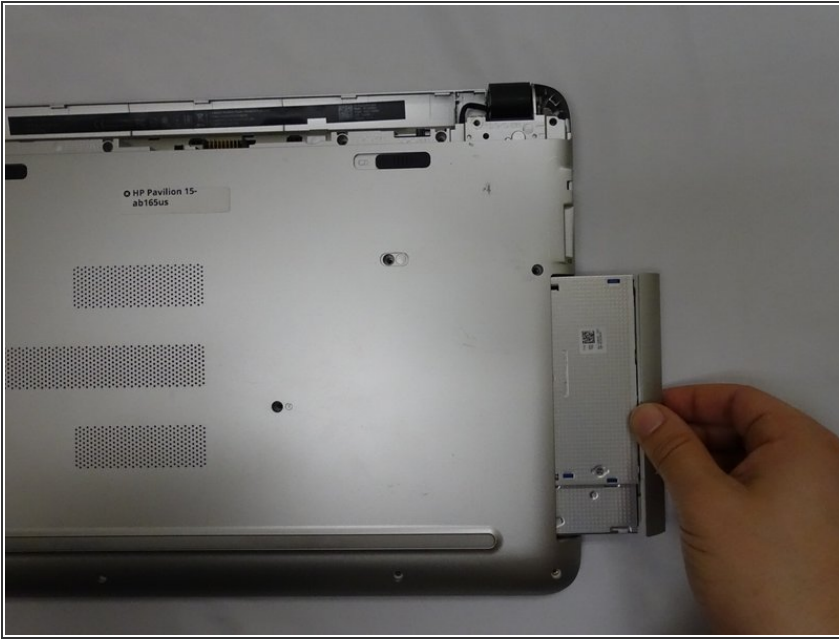
- Remove the two plastic tabs with a metal spudger.

Step 4



- Remove the sixteen 8mm screws that hold the bottom cover with a Phillips #1 screwdriver.

Step 5



- Pull the Optical Drive out.

Step 6



- Remove the 3mm screws that were hidden under the Optical Drive with a Phillips #0 screwdriver.

Step 7



- Flip the computer back over.
- Use a plastic opening tool to release the clips holding the keyboard section in place.

Step 8



- Close the lid and pull the screen and keyboard section up and away from the disconnected bottom cover.
- ⚠ The hard drive is NOT screwed into place on the underside of the keyboard section.

Step 9 — Wi-Fi Card



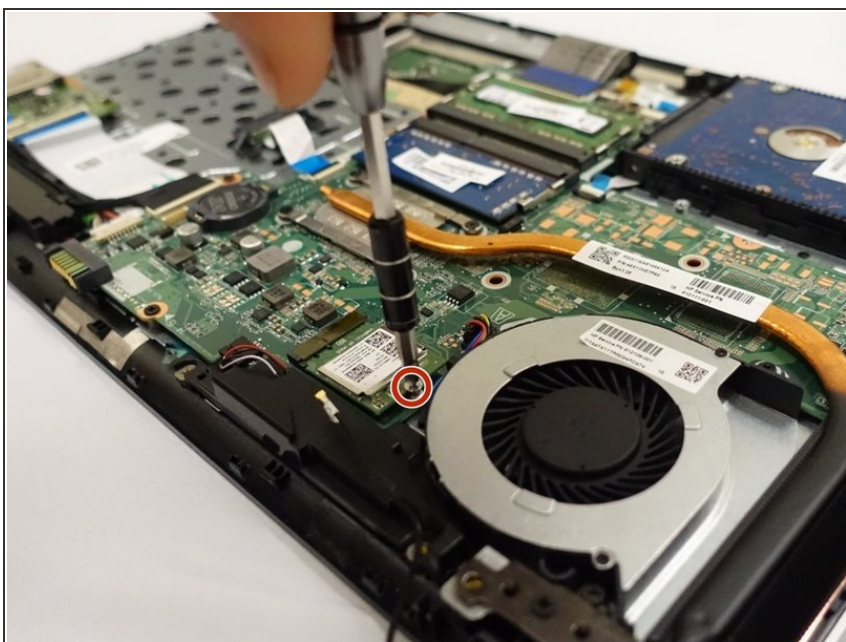
- Locate the Wi-Fi card.

Step 10



- Pull the cable from the clips and use the spudger to disconnect the wire from the Wi-Fi card.

Step 11



- Use the Phillips #1 screwdriver to remove the single 4mm screw.

Step 12



- Pull the Wi-Fi card up and out.

To reassemble your device, follow these instructions in reverse order.