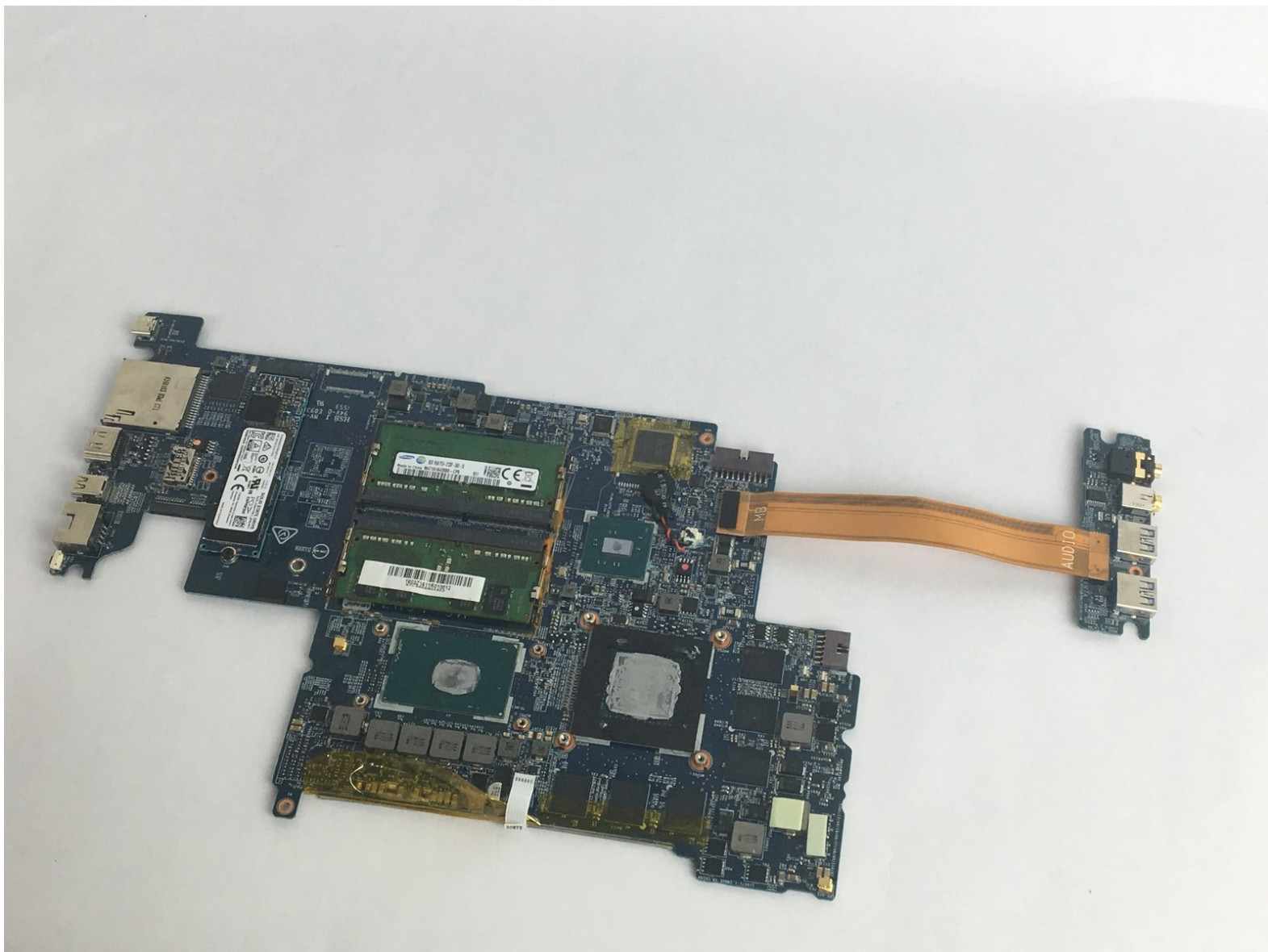




MSI GS60 6QE GHOST PRO 4K RAM Replacement

In this guide a step by step explanation of how to replace the RAM.

Written By: Justin Pelley



INTRODUCTION

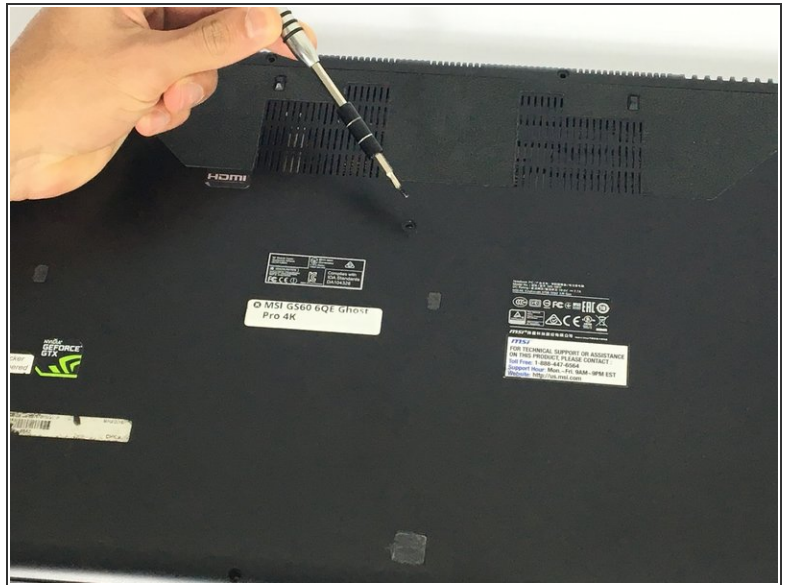
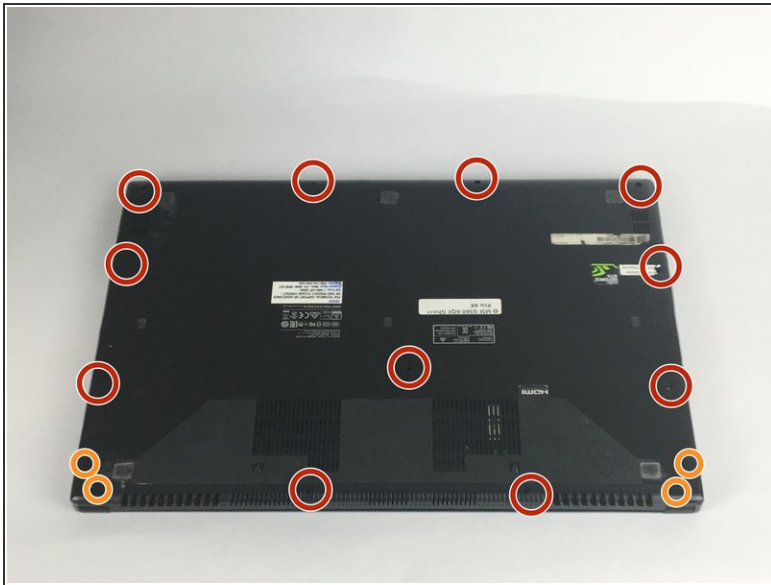
This replacement guide is difficult only because in order to replace the RAM, the motherboard need to be taken out of the device completely. However, replacing the RAM itself is not hard at all. so basically all the hard work is to unplug the motherboard completely and take it out to reach the RAM.



TOOLS:

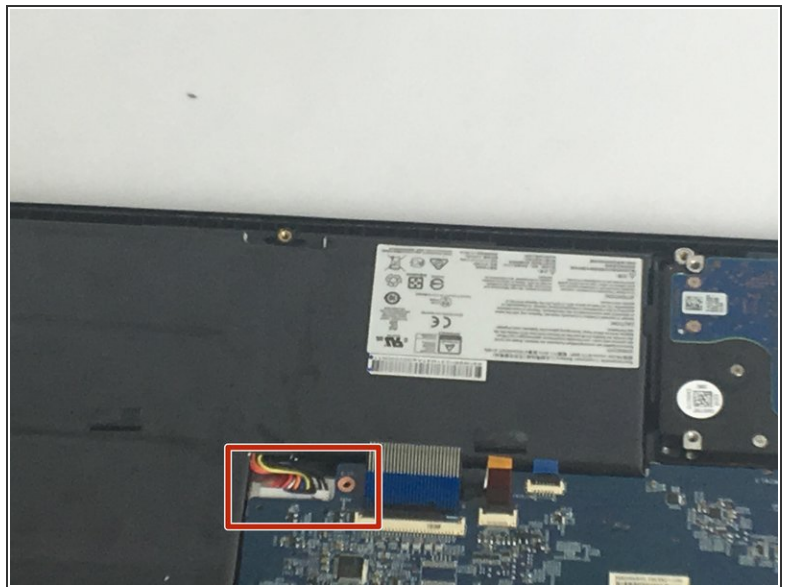
- [Phillips #0 Screwdriver](#) (1)

Step 1 — Battery



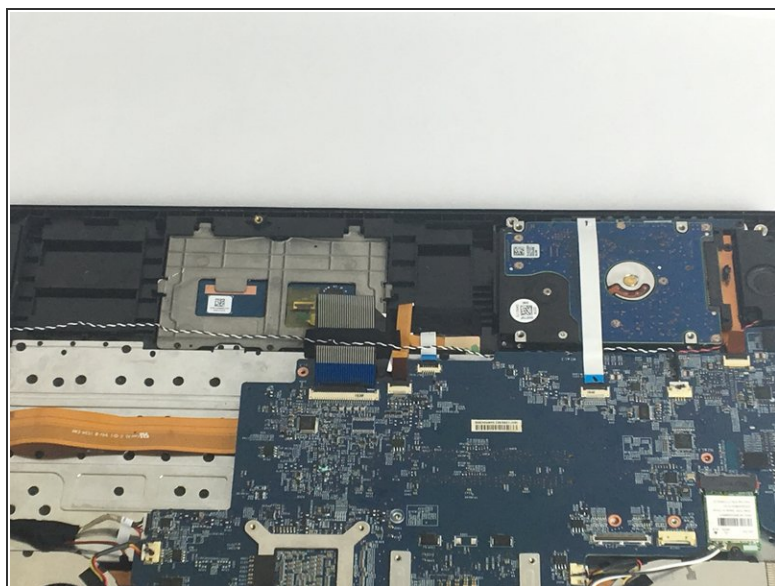
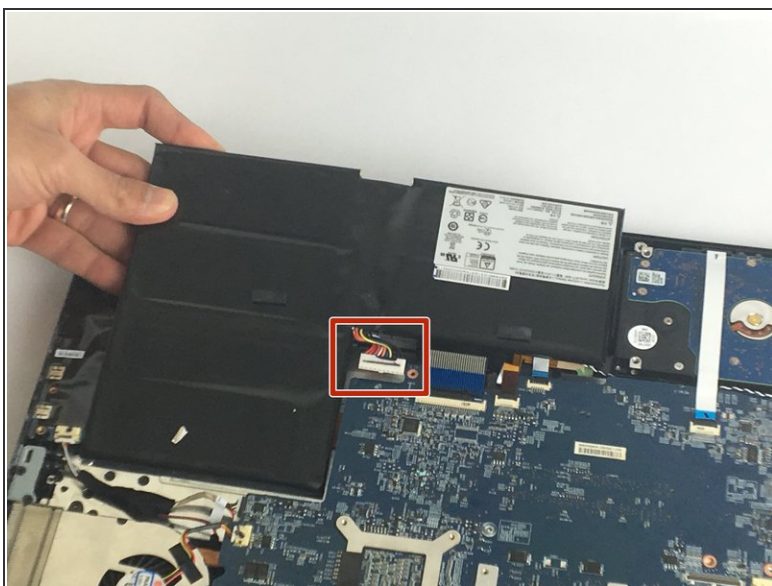
- Remove the eleven 5mm screws with a Phillips #0 bit.
- Remove the four 2.5mm screws with a Phillips #0 bit.

Step 2



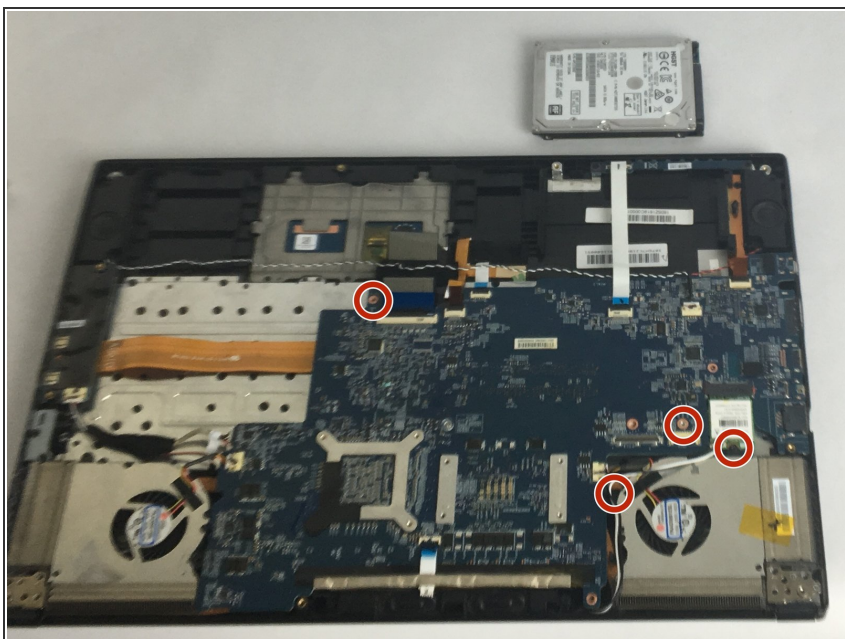
- After opening the bottom plate, locate the battery and the battery connection.

Step 3



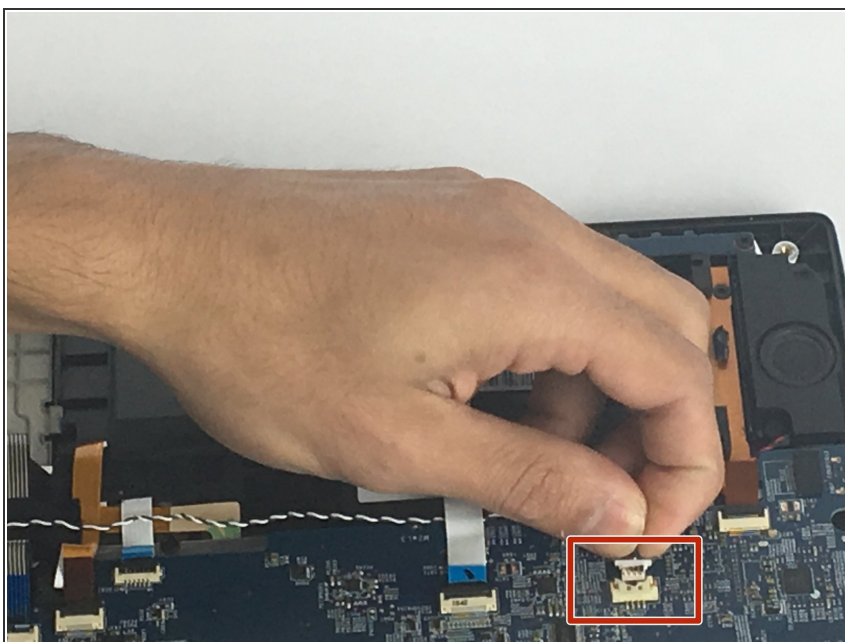
- Unplug the battery connection carefully from the motherboard, and remove the old battery.

Step 4 — Motherboard



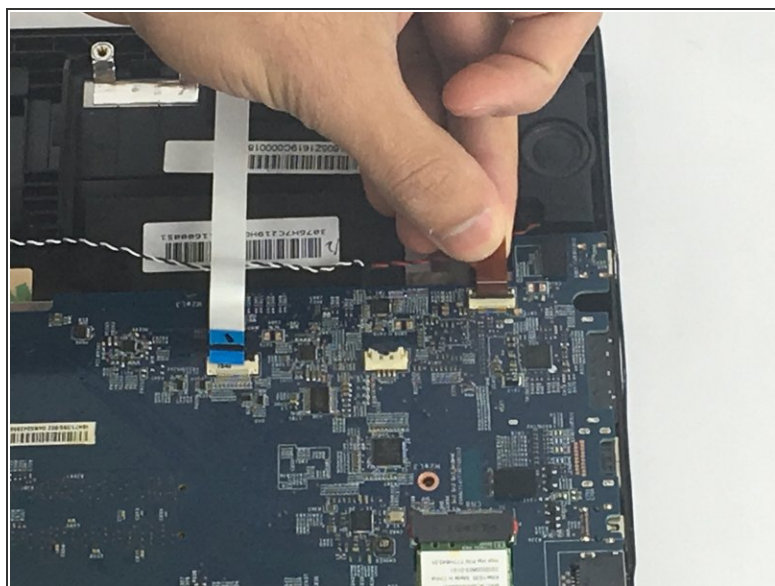
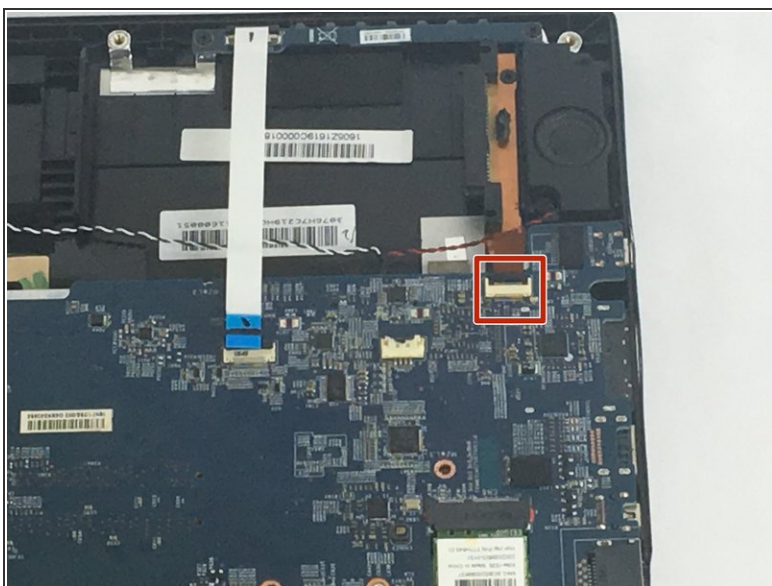
- Remove the four 2.5 mm screws from the motherboard.

Step 5



- Unplug the speaker wire.

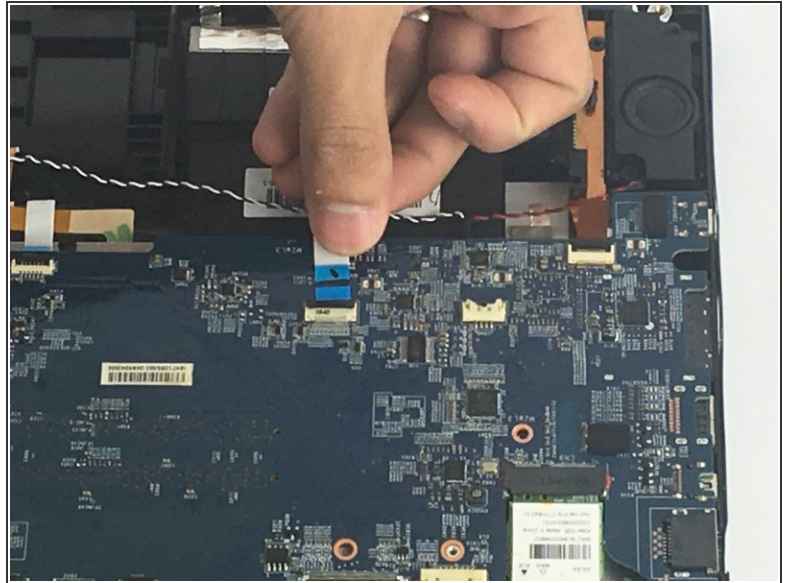
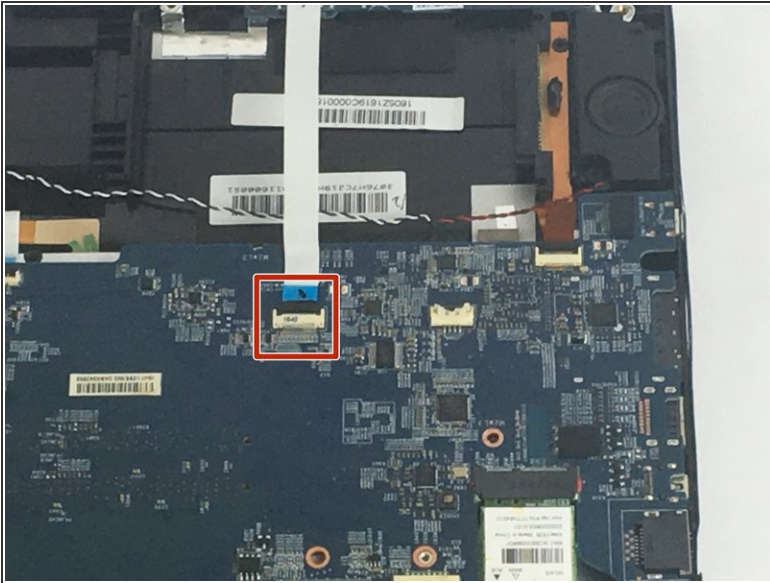
Step 6



- Gently lift the selected black tab that connects the cable onto the board and then slide out the cable.

⚠ Be careful not to break the black cover.

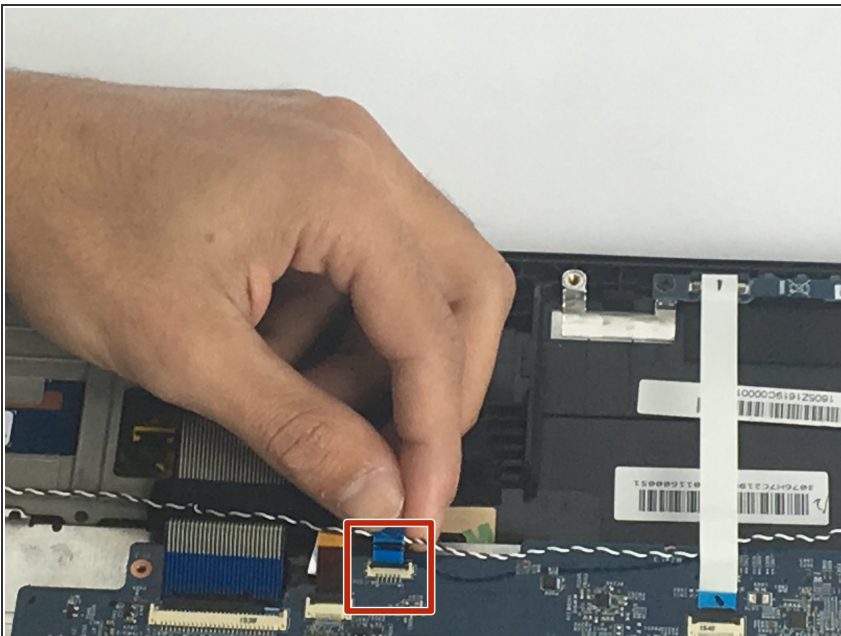
Step 7



- Gently lift the selected black tab that connects the cable onto the board and then slide out the cable.

⚠ Be careful not to break the black cover because it can be broken easily

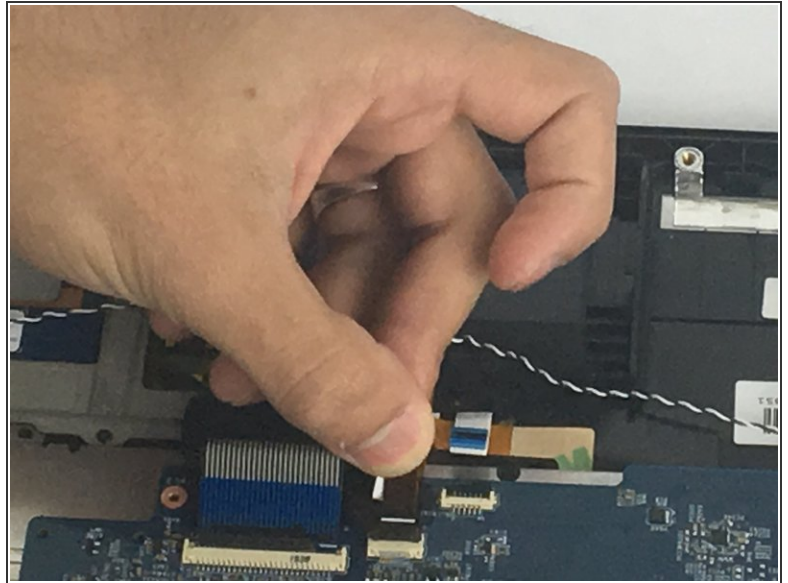
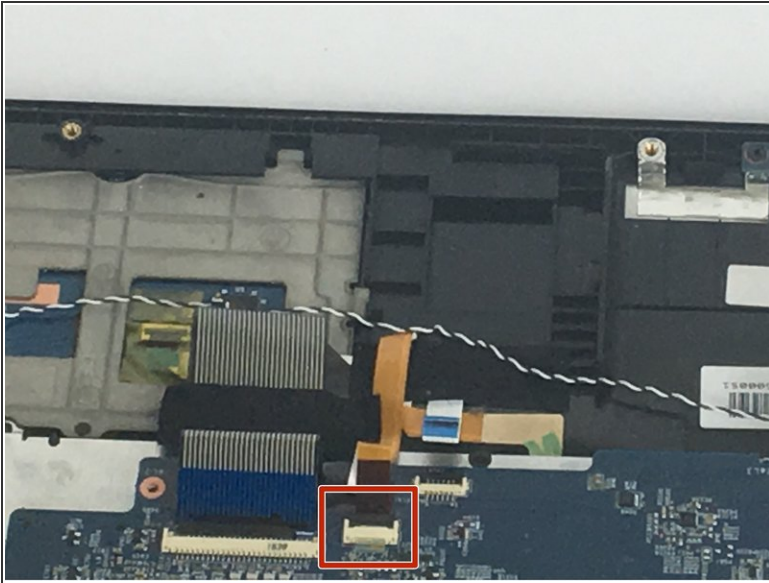
Step 8



- Gently lift the selected black tab that connects the cable onto the board and then slide out the cable.

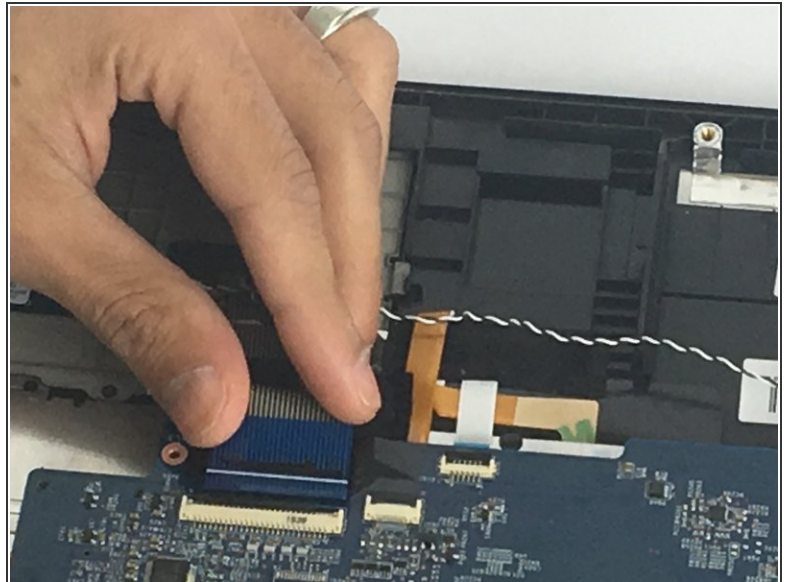
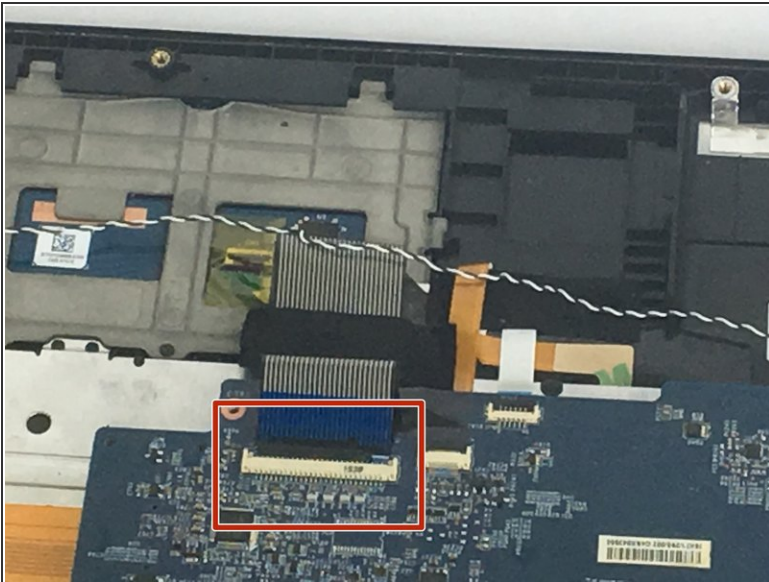
⚠ Be careful not to break the black cover. lift it up gently

Step 9



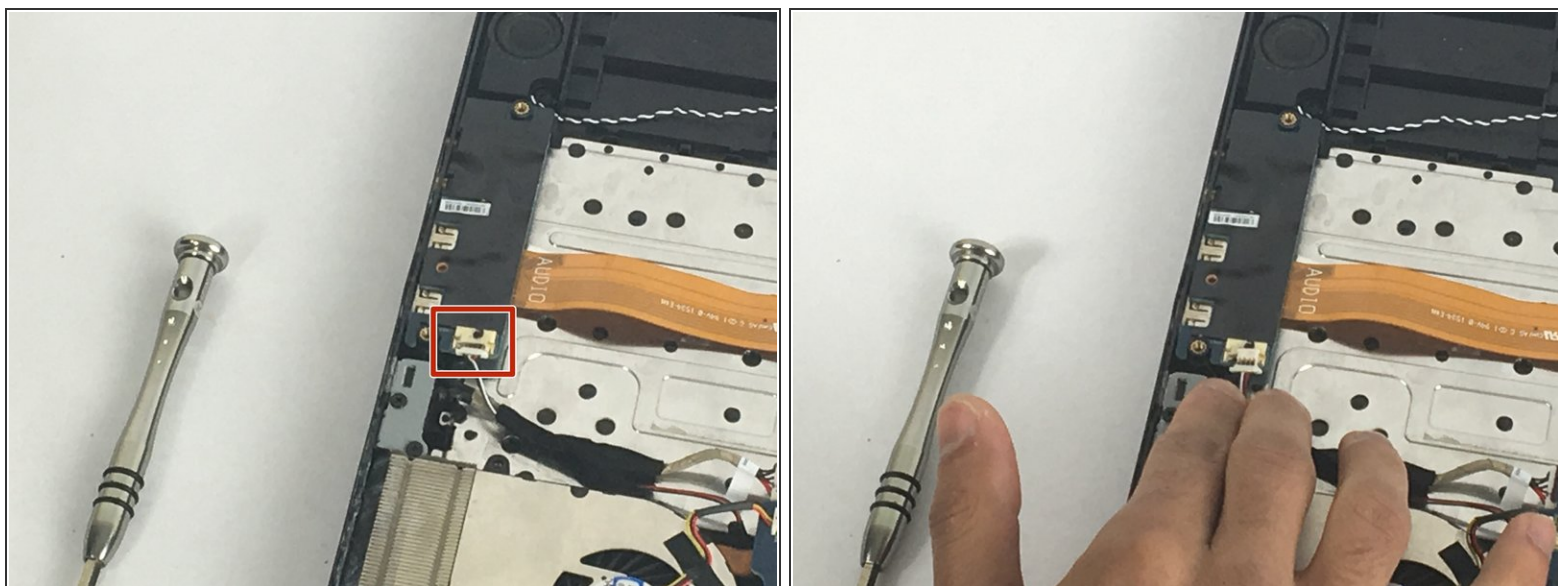
- Gently lift the selected black tab that connects the cable onto the board and then slide out the cable.

Step 10



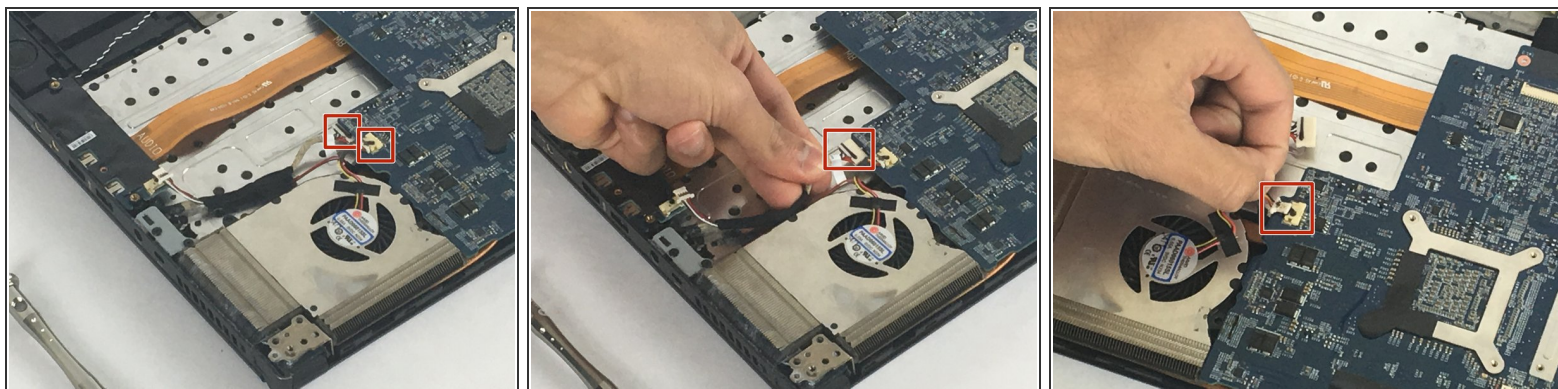
- Gently lift the selected black tab that connects the cable onto the board and then slide out the cable.

Step 11



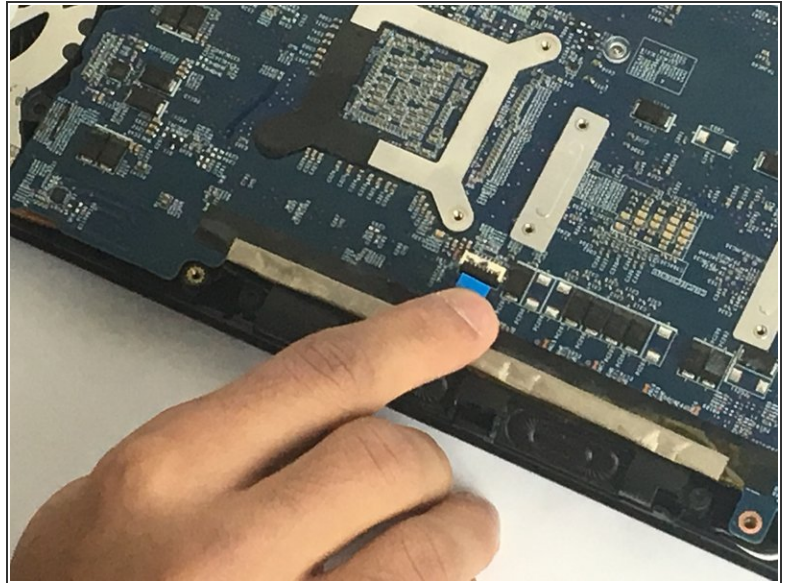
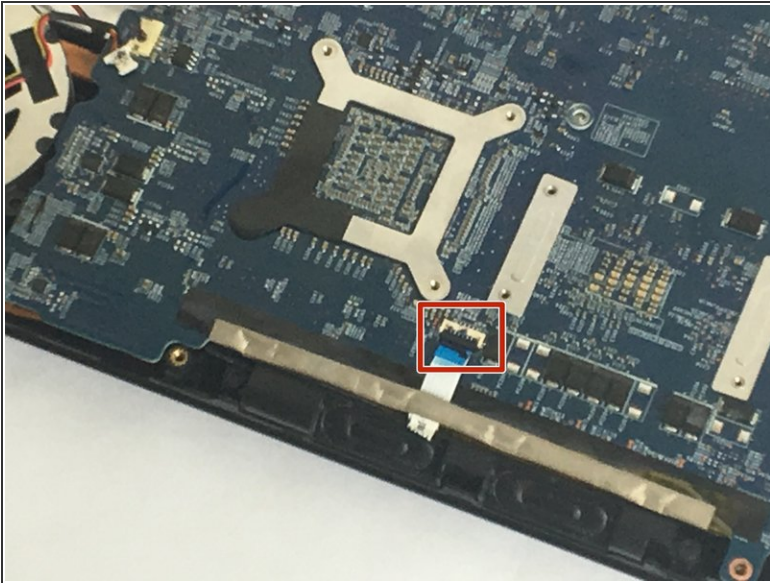
- Unplug the selected cable

Step 12



- Locate and unplug the selected cables.

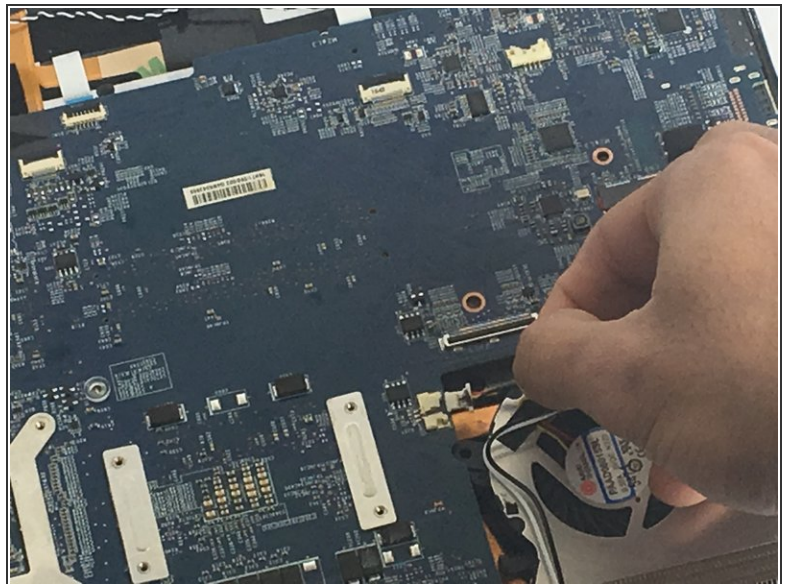
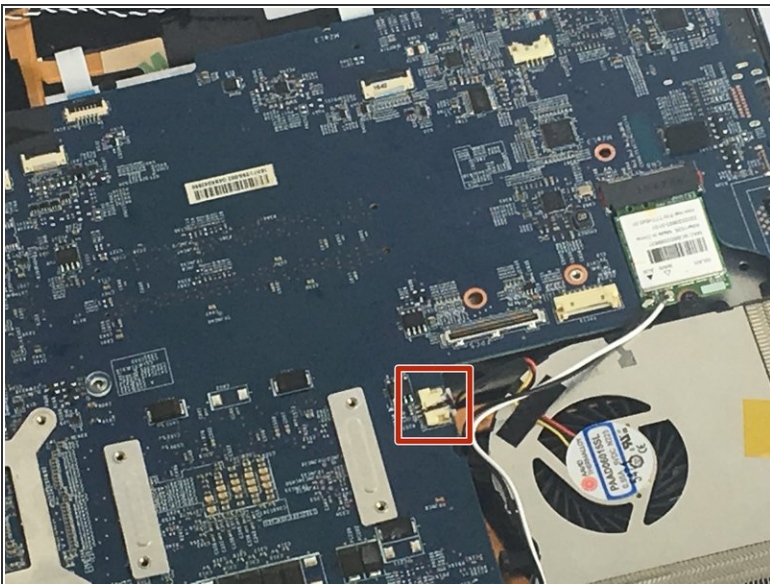
Step 13



- Gently lift the selected black tab that connects the cable onto the board and then slide out the cable.

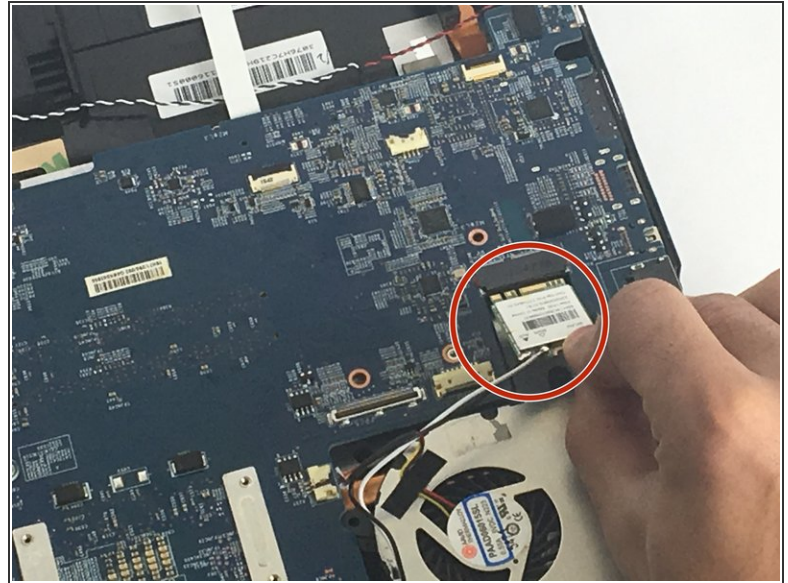
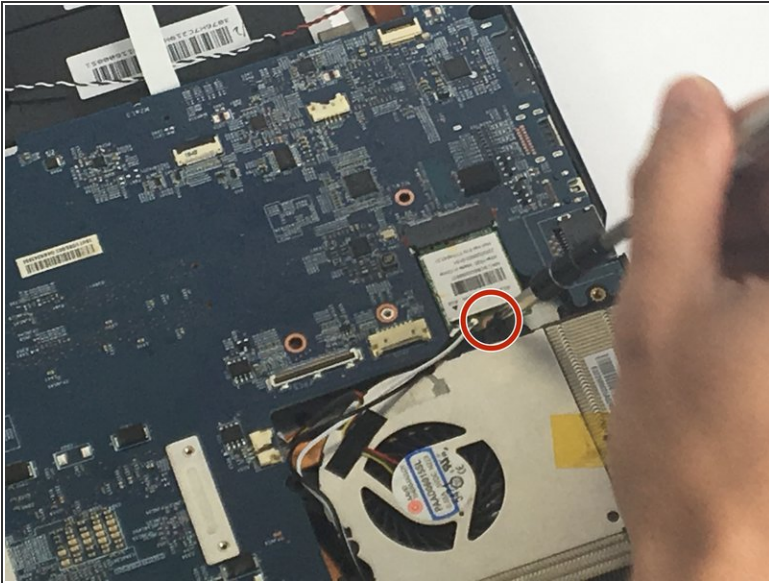
⚠ Unplug it carefully without breaking the black cover.

Step 14



- Gently unplug the selected cable

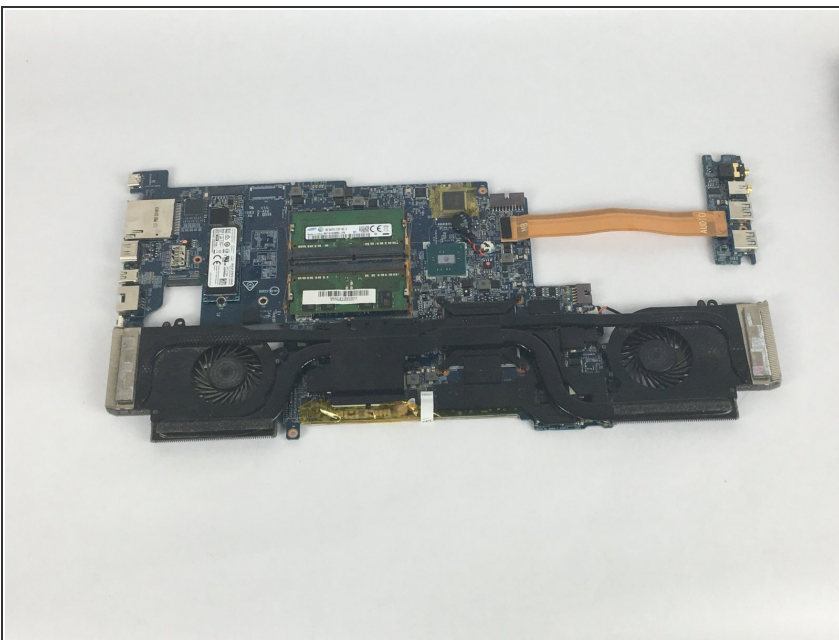
Step 15



- Gently remove the electronic component by sliding it out and lifting it up after unscrewing the 2.5 mm screw

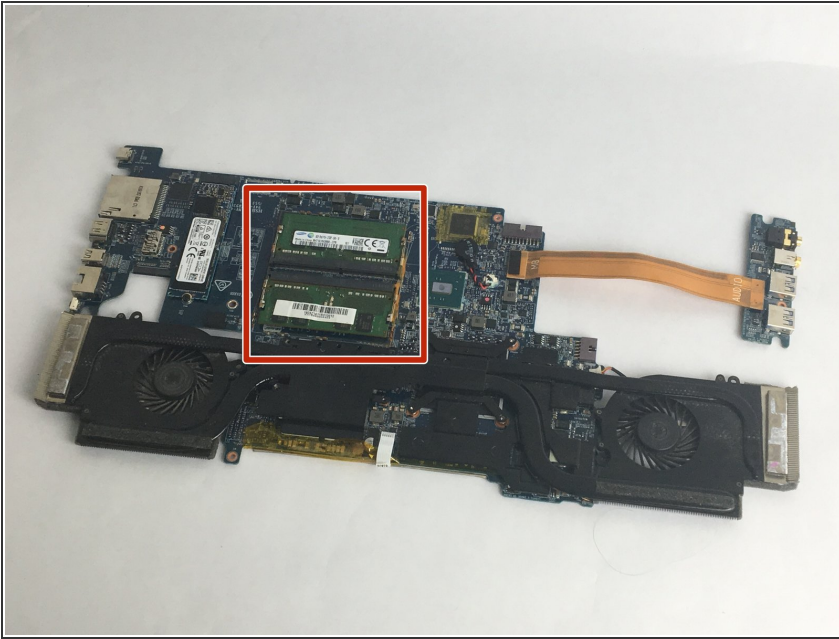
⚠ Make sure you unscrew the screw first and unplug the chip from the motherboard. Do not disconnect the wires connected to the chip

Step 16



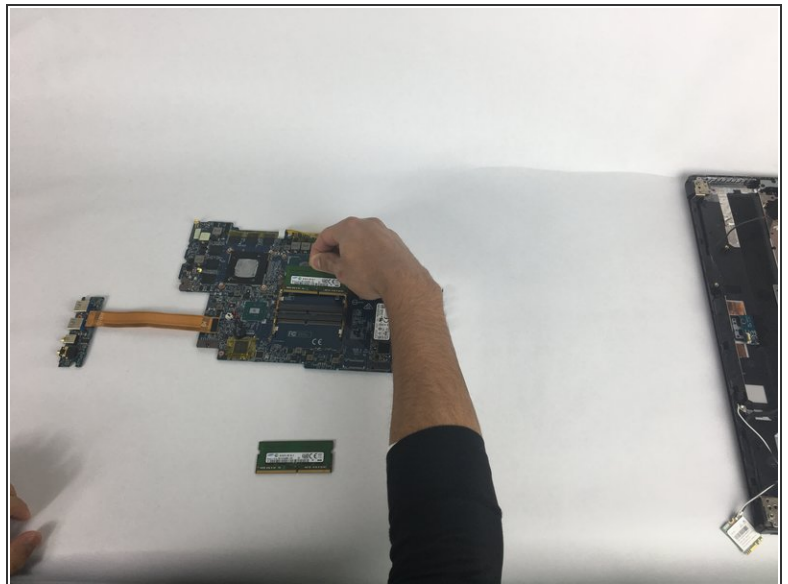
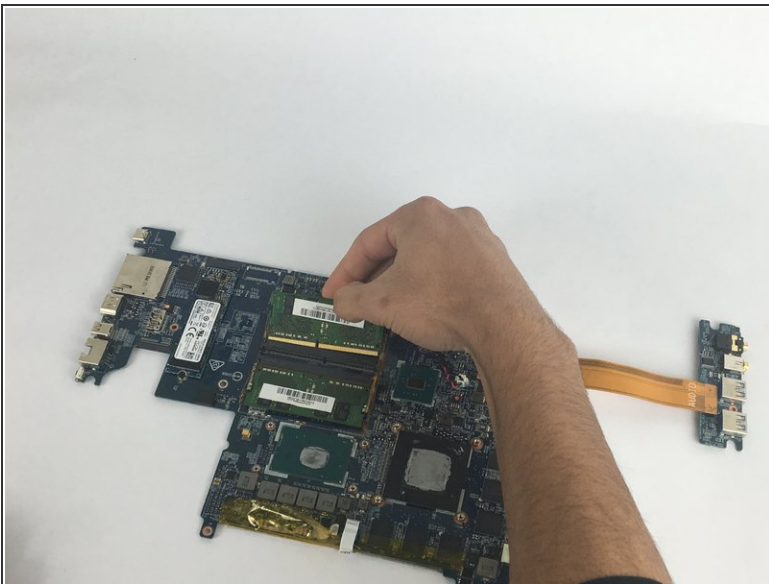
- After unplugging all of the cables and unscrewing all of the screws, gently remove the motherboard out of the computer chassis
- This part will take some effort but remember not to apply too much pressure on the motherboard as to not damage any of the small electrical components on the board

Step 17 — RAM



- After removing the motherboard from the laptop chassis locate the RAM chips indicated by the red rectangle.

Step 18



- Firmly grip the two rectangular Ram components, one at a time, and pull them up from the Motherboard, be gentle. Once this process is complete, you have successfully removed the Ram.

To reassemble your device, follow these instructions in reverse order.

This document was generated on 2020-11-28 06:11:10 AM (MST).

