



Samsung Radiant 360 R1 3.5" Woofer Speaker Replacement

Reference this guide if you have poor base or high pitch frequency audio.

Written By: Aaron Bristow



INTRODUCTION

The woofer speaker is responsible for all the deep bass sounds in your speaker, and if you hear any weird rattling or pinging noises there is a good chance your woofer speaker will need to be replaced. This guide will demonstrate how to replace the woofer speaker in the Samsung Radiant 360 R1.



TOOLS:

- [Phillips #1 Screwdriver](#) (1)
 - [iFixit Opening Tools](#) (1)
-

- Use the plastic opening tool to lift and remove the rubber grommet plugs.

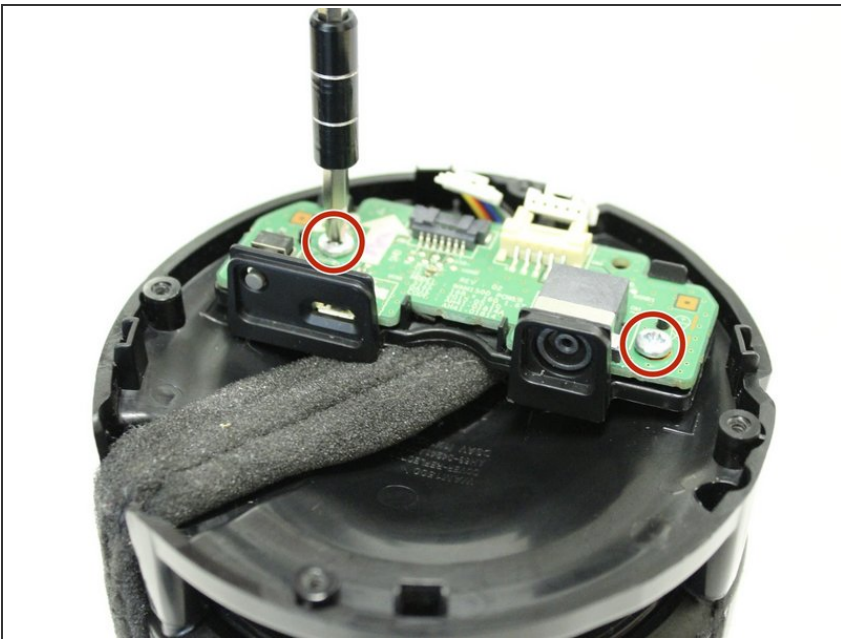
- Using a PH1 Philips screwdriver, remove four (9.5mm x 1.6mm) screws from the base plate.
- Remove base plate by stabilizing speaker and using plastic prying tool to pry the base plate from the speaker.

Step 3



- Place the speaker on the table with the Touch Pad facing down. This will leave you with the Port Panel exposed.
- Remove speaker grill by stabilizing speaker on a table and applying pressure to the bottom of the speaker. Slide the speaker grill up and away from the remaining endcap.

Step 4



- Remove the two exposed (9.5mm x 1.6mm) PH1 Phillips screws on the Port Panel.
- Remove the Port Panel from the speaker body, exposing the ribbon cables.

Step 5



- While stabilizing the Port Panel remove the two ribbon cables one at a time by pressing the locking clip down on the ribbon cable connectors and pulling the connector away from the Port Panel.

Step 6 — 3.5" Woofer Speaker



- Remove the eight (9.5mm x 1.66mm) PH1 Phillips screws on the right side of the speaker body.
- Remove the one (9.5mm x 1.66mm) PH1 Phillips head screws on the left side of the speaker body.

Step 7



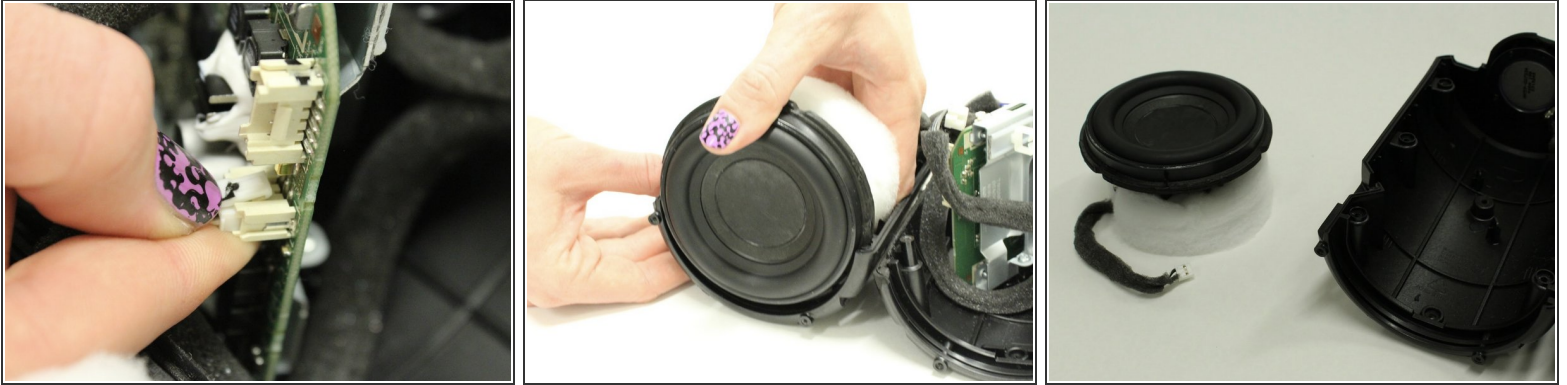
- Remove the four (9.5mm x 1.66mm) PH1 Phillips screws on the port speaker body.
- Remove the Port Panel exposing the subwoofer.

Step 8



- Open up the speaker body to expose the inner panel, and motherboard.

Step 9



- Remove the ribbon cable from the subwoofer which is attached to the main motherboard.
- Slide the subwoofer out of the enclosure.

To reassemble your device, follow these instructions in reverse order.