



Asus V500CA-DB51T WiFi Card Replacement

In this guide, you will learn how to replace...

Written By: Galen P Garofalo



INTRODUCTION

In this guide, you will learn how to replace the WiFi Card found in the Asus V500CA-DB51T. This guide was made to help with replacing a broken or defective WiFi Card, and is an easy repair for any skill level.

TOOLS:

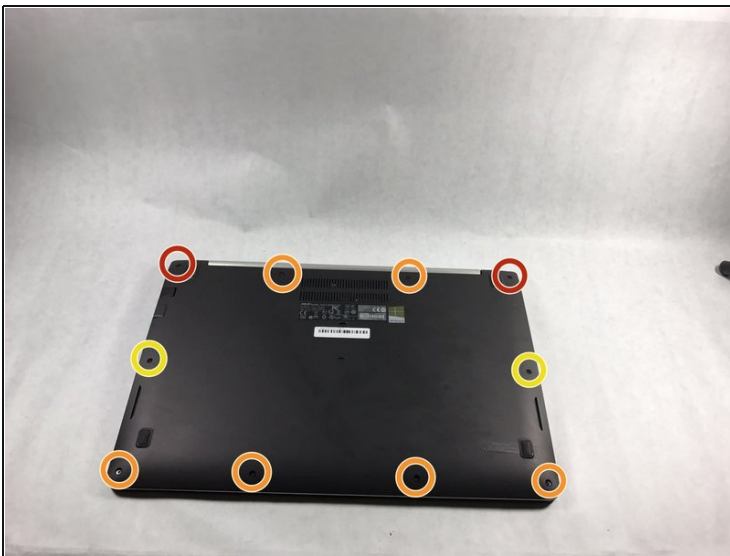
[Phillips #00 Screwdriver](#) (1)

[iFixit Opening Tool](#) (1)

[Tweezers](#) (1)

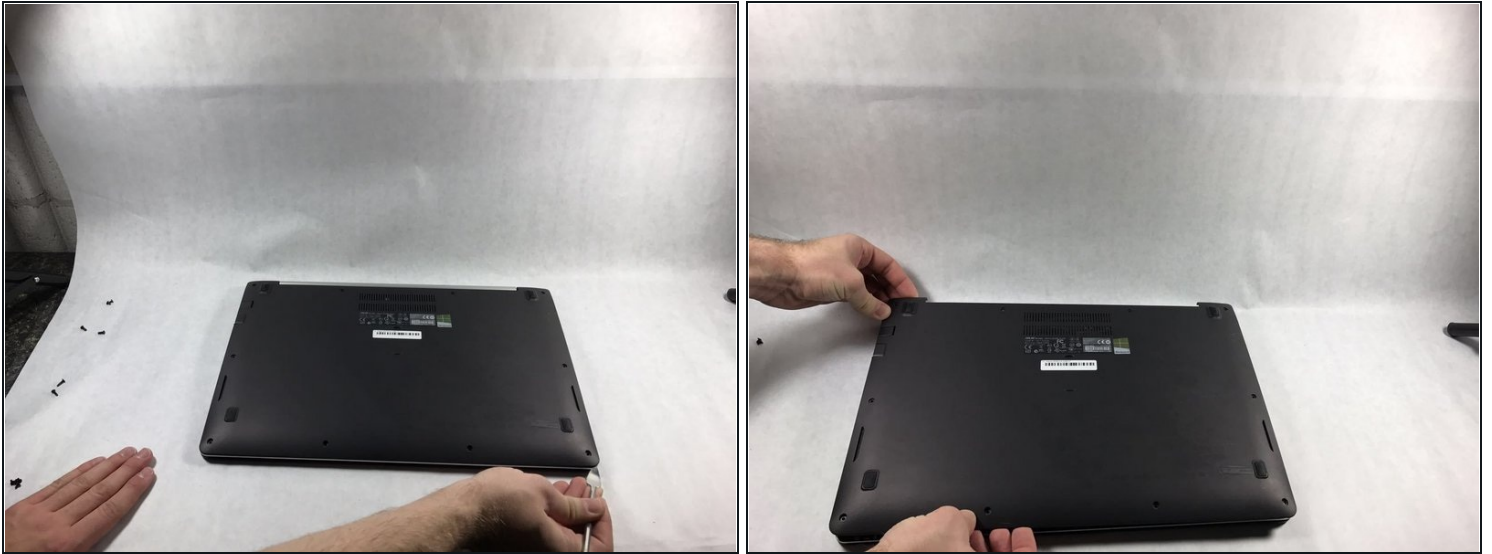
[Tri-point Y0 Screwdriver](#) (1)

Step 1 — Battery



- Remove the following ten screws securing the lower case to the upper case:
 - The top left and right corners have .7 cm screws.
 - The two top-middle and four bottom are .4 cm screws.
 - The middle left and right are .8 cm screws.
- Remove the screws using the Phillips #00 screwdriver.

Step 2



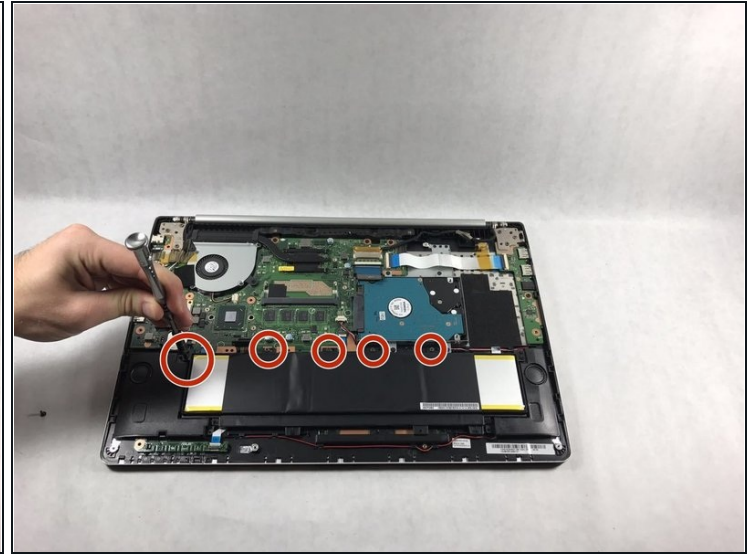
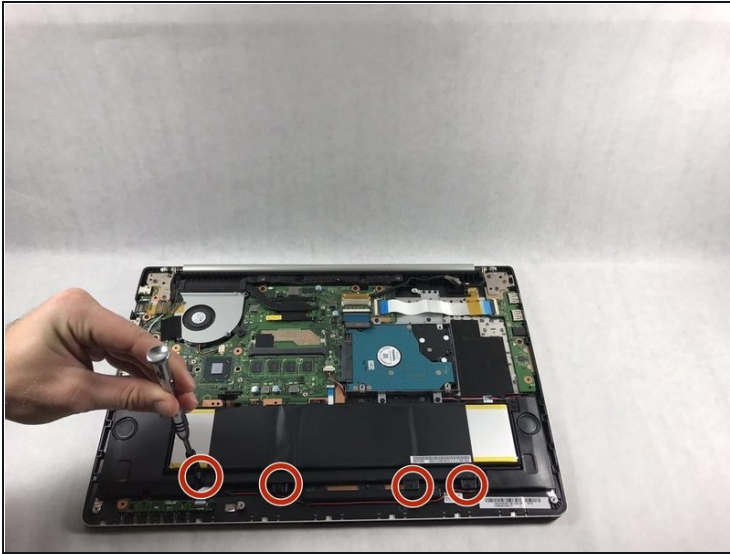
- Wedge your fingers between the upper case and the lower case.
- Gently pull the lower case away from the upper case.
- Remove the lower case and set it aside.

Step 3



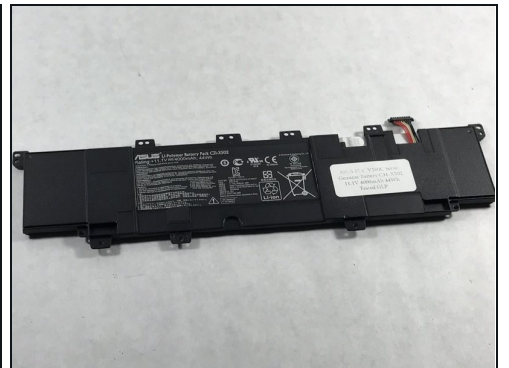
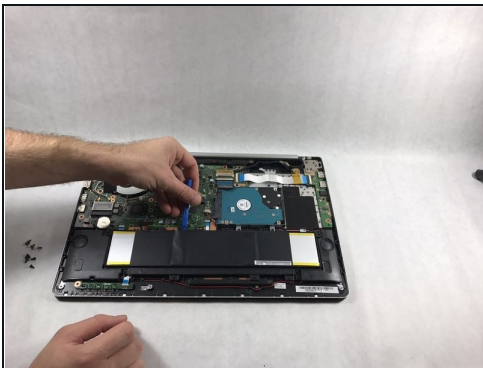
- Use the flat end of the blue plastic opening tool to lift the battery connector up out of its socket on the motherboard.

Step 4



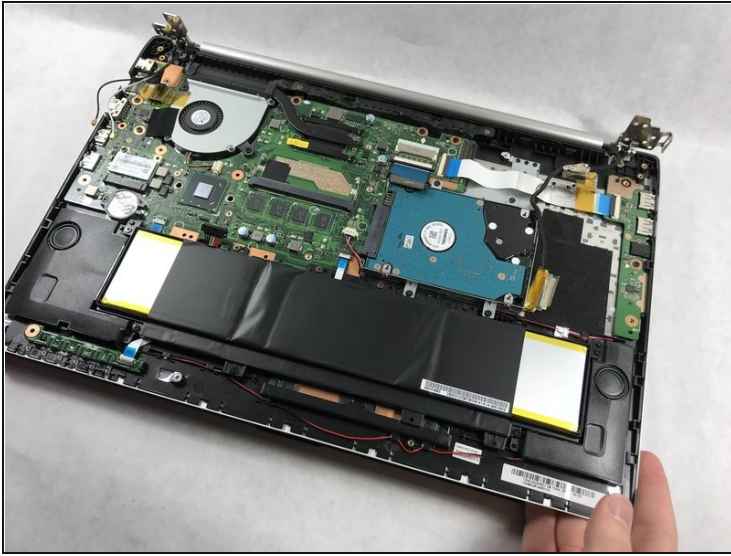
- Remove the tri-point screws that secure the battery to the casing.
- All screws securing the battery in place are .5 cm tri-point screws.

Step 5



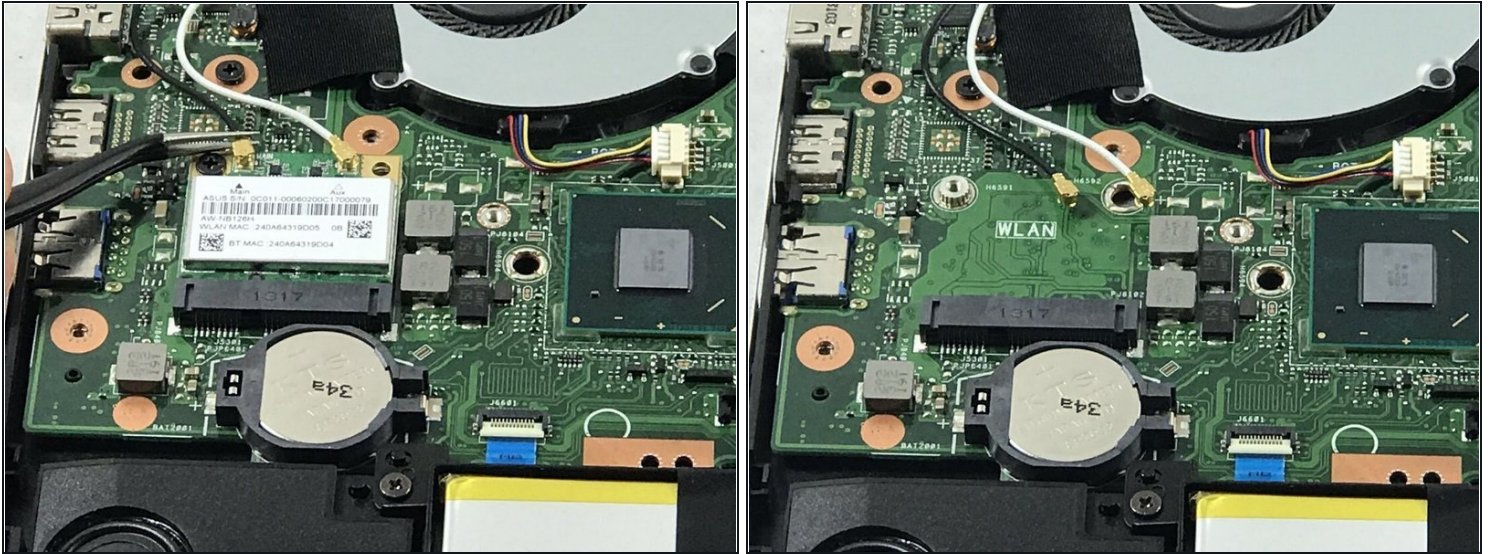
- Use the opening tool to pop up the battery away from the casing.

Step 6 — WiFi Card



- Locate the section of the device that houses the WiFi Card.
- This should be a white, square-shaped object located just above the left end of the battery.

Step 7



- Disconnect the black and white wires that are connected to the WiFi card by gently pulling them upward with a pair of [tweezers](#).
- Using the tweezers, gently pull the WiFi card out away from yourself.

⚠ If you try pulling up you could cause damage, so be sure to slowly and gently pull the card away from yourself.

To reassemble your device, follow these instructions in reverse order.