



HP Envy 4-1105dx Display Replacement

Use this guide to replace the cracked or broken screen of your HP device. This guide does not include the removal of the front facing camera.

Written By: Parvathy Nambidi



INTRODUCTION

Use this guide to replace the broken display on your HP Envy 4-1105dx.



TOOLS:

- [Metal Spudger](#) (1)
 - [Spudger](#) (1)
 - [iFixit Opening Tools](#) (1)
 - [Phillips #0 Screwdriver](#) (1)
 - [Phillips #1 Screwdriver](#) (1)
-

Step 1 — Battery



- ❗ Power off the device before beginning disassembly. Disconnect all external devices.
- Flip the device on its back.

Step 2



- Unscrew and remove the one 7.5 mm Phillips-head screw using Phillips #1 screwdriver.

Step 3



- Unscrew twelve 6.0 mm Phillips-head screws using Phillips #1 screwdriver.

Step 4



- Use the plastic opening tool (which is short and has a thin end for prying open device parts) to pry open the back case of the device.

Step 5



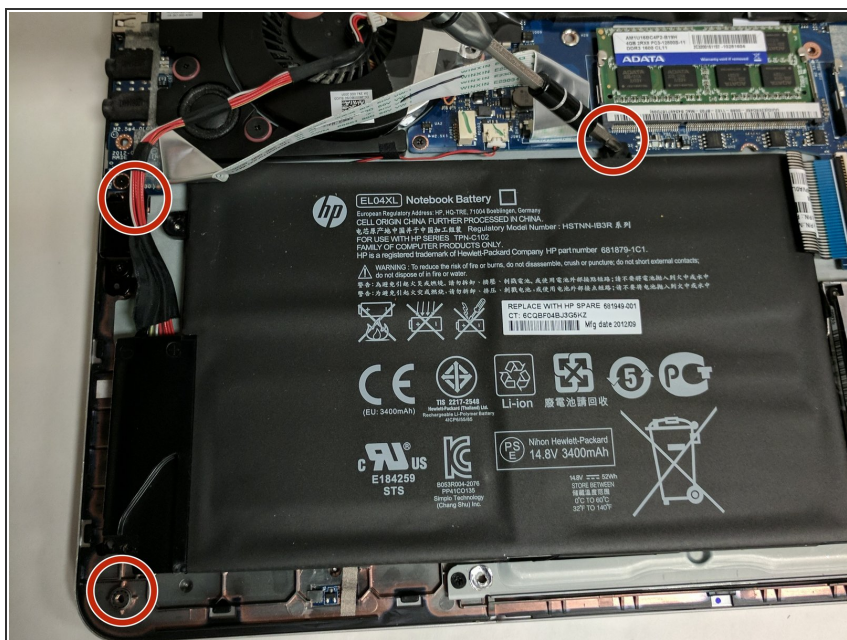
- Once the device is open, move the ribbon cable to the side.

Step 6



- Use the flat end of a plastic spudger to disconnect the battery cable from its socket in the motherboard.

Step 7



- Unscrew and remove the three 4.0 mm Phillips-head screws that hold the battery in place, using a Phillips #1 screwdriver.

Step 8



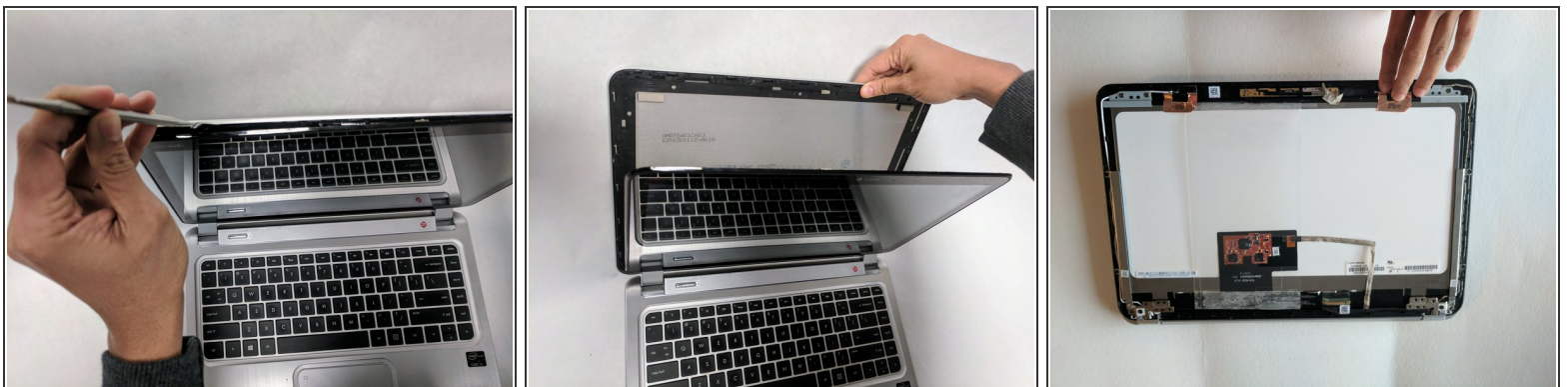
- Lift the battery up and remove.
- ⚠ Removing the battery can dislodge the touchpad bracket. Place the battery carefully over the alignment pins.

Step 9 — Display



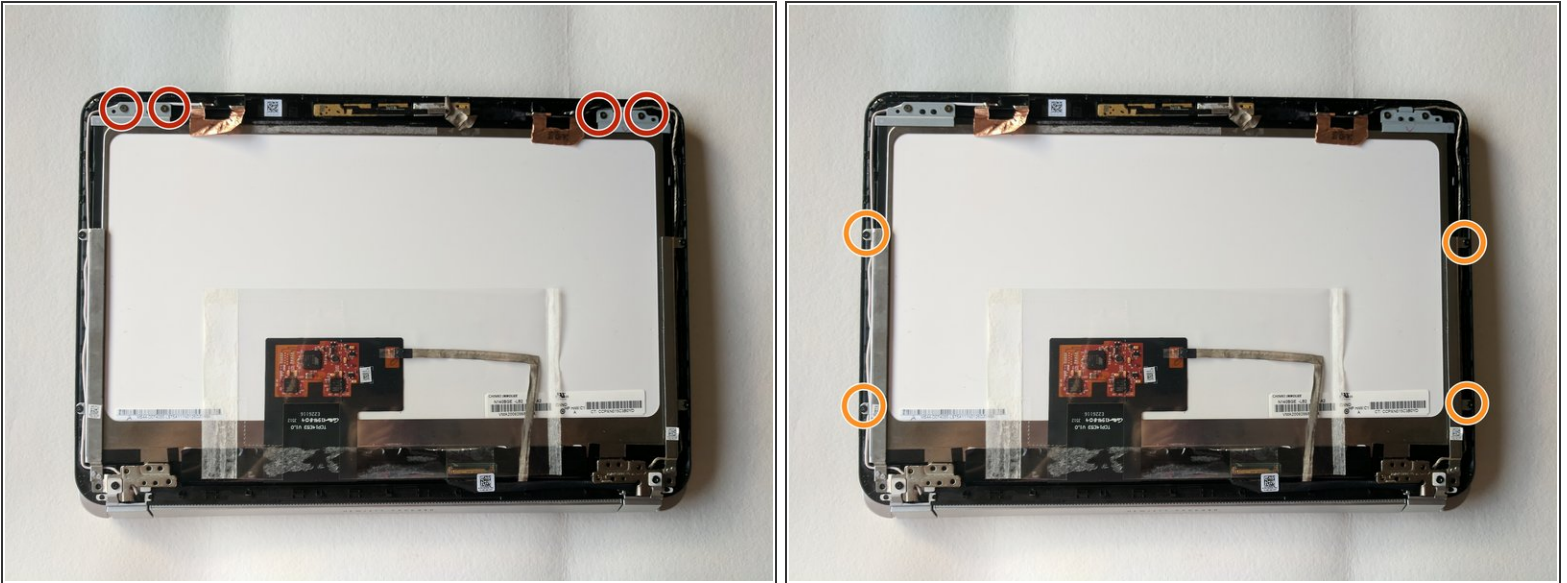
- Close the device and turn it right-side up. Locate the two screw covers on the left and right side base of the display panel.
- Remove the screw covers, using the black plastic spudger.
- Remove the two 3.0 mm Phillips-front screws on the left and right hinges that secure the display panel to the computer, using a Phillips #1 screwdriver.

Step 10



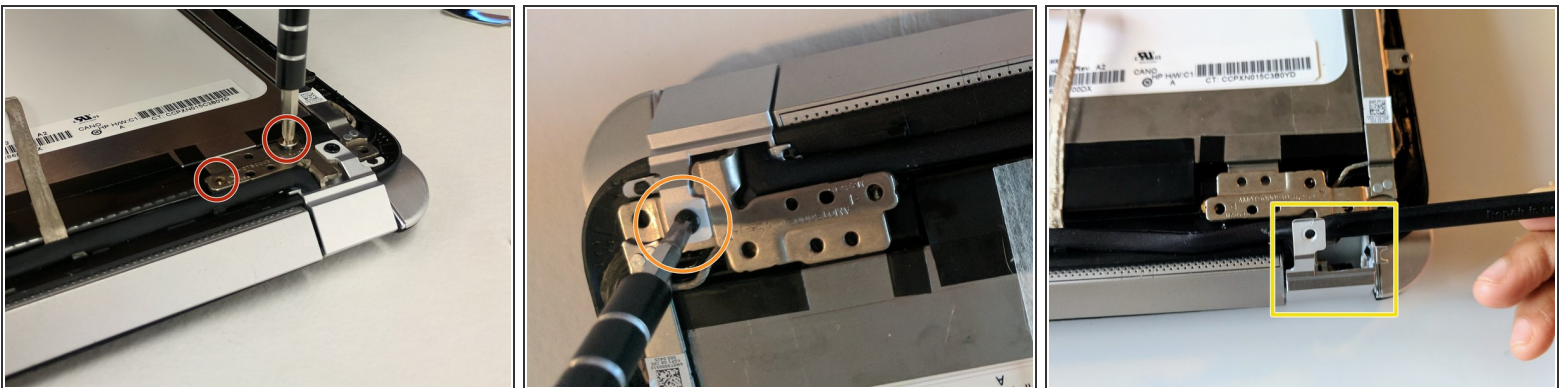
- Pry open the plastic bezel case of the device using the plastic spudger. If the plastic spudger doesn't work, carefully use the metal spudger.
 - Loosen the edges of the case from all four sides of the display panel.
- ⚠ Be careful not to use hands while opening, as the edges of the back case are sharp.
- Once the back case pops out, close the laptop exposing the back display.

Step 11



- Remove the four 4.0 mm Phillips display panel screws using Phillips #1 screwdriver.
- Remove the four 2.0 mm Phillips screws using Phillips #00 screwdriver.

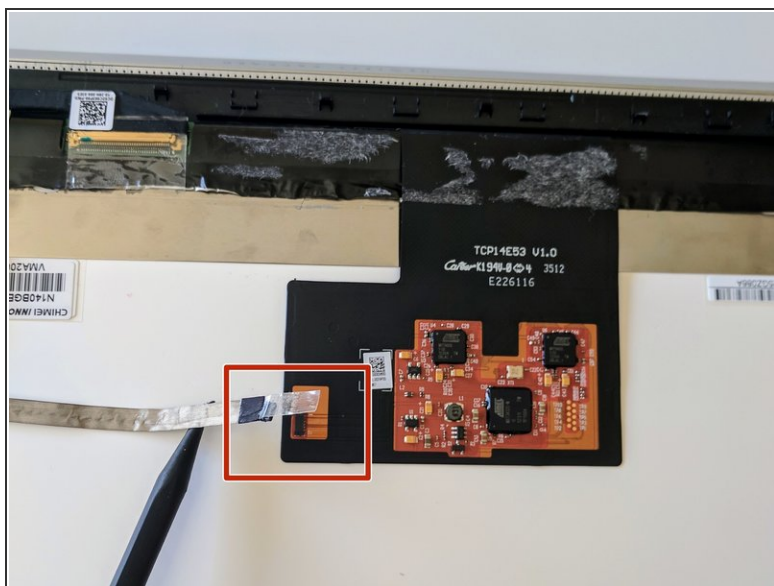
Step 12



- Remove the four 4.0 mm Phillips silver screws on the hinges using a Phillips #1 screw driver.
- Remove the two 6.0 mm Phillips black hinge cover screws using a Phillips #0 screw driver.
- Flip and remove the hinge covers using a plastic spudger.

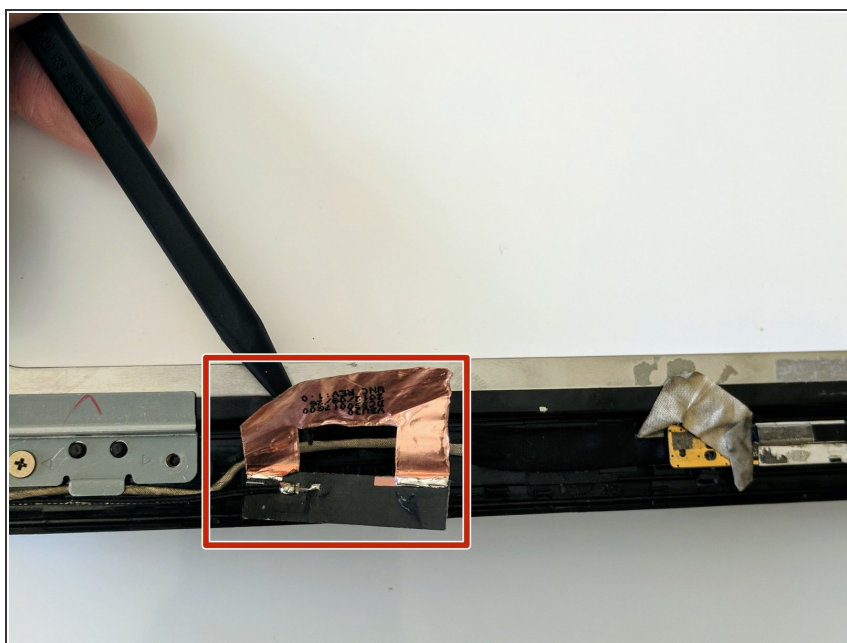
⚠ While flipping, be careful not bend the screen brackets.

Step 13



- Disconnect the ribbon cable on the bottom of the display panel using a plastic spudger.
- Disconnect the adjacent golden LCD connector using a plastic spudger.

Step 14



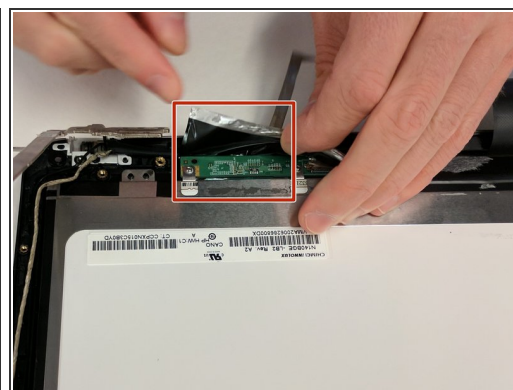
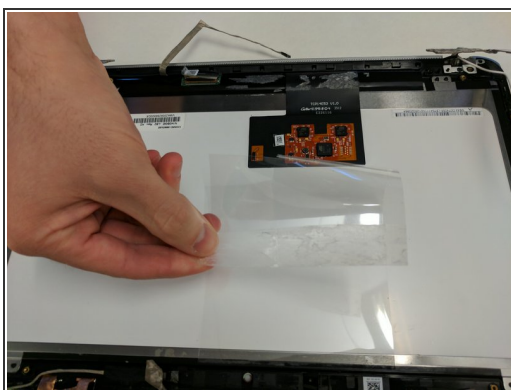
- Remove the golden tape adhering to the display panel using a plastic spudger.

Step 15



- Remove the white color wifi antennas from the display panel using a plastic spudger.

Step 16



- Separate the transparent plastic tape that covers the circuit board using hands.
- Carefully flip the circuit board.
- Remove the black tape adhering to the green circuit board that is connected to the display panel.

Step 17



- Using a plastic prying tool, remove the display panel.
- This is the disassembled screen.

To reassemble your device, follow these instructions in reverse order.