



Toshiba Satellite P855-S5312 Fan Replacement

This Guide is to help replace the fan for the Toshiba Satellite P855-S5312.

Written By: Dalton



INTRODUCTION

This Guide is to help replace the fan for the Toshiba Satellite P855-S5312. Replacing the fan in the device will resolve overheating issues caused by inadequate cooling. Tools required for the guide are plastic opening tool and Phillips size 0 screwdriver.



TOOLS:

- [iFixit Opening Tools](#) (1)
- [Phillips #0 Screwdriver](#) (1)



PARTS:

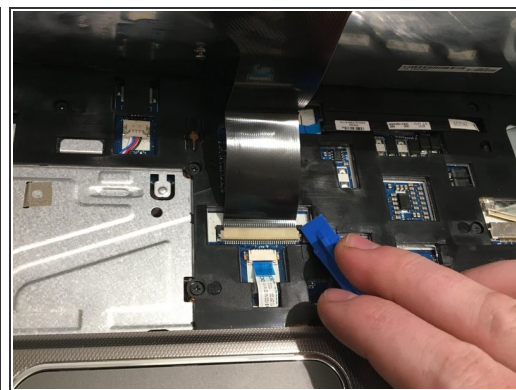
- [Fan/ CPU cooler](#) (1)

Step 1 — Battery



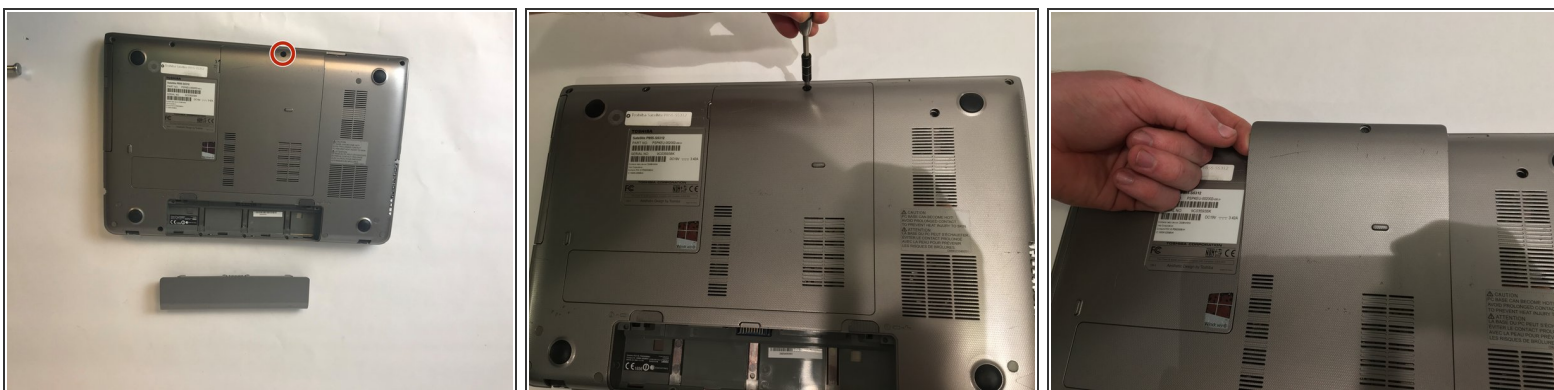
- Turn laptop upside down with the spine facing towards you and locate the two tabs on the top of the back panel.
- Move the sliders to the left and right to release the tabs holding the battery in.
- While the tabs are pushed outwards, remove the battery from the device.

Step 2 — Keyboard



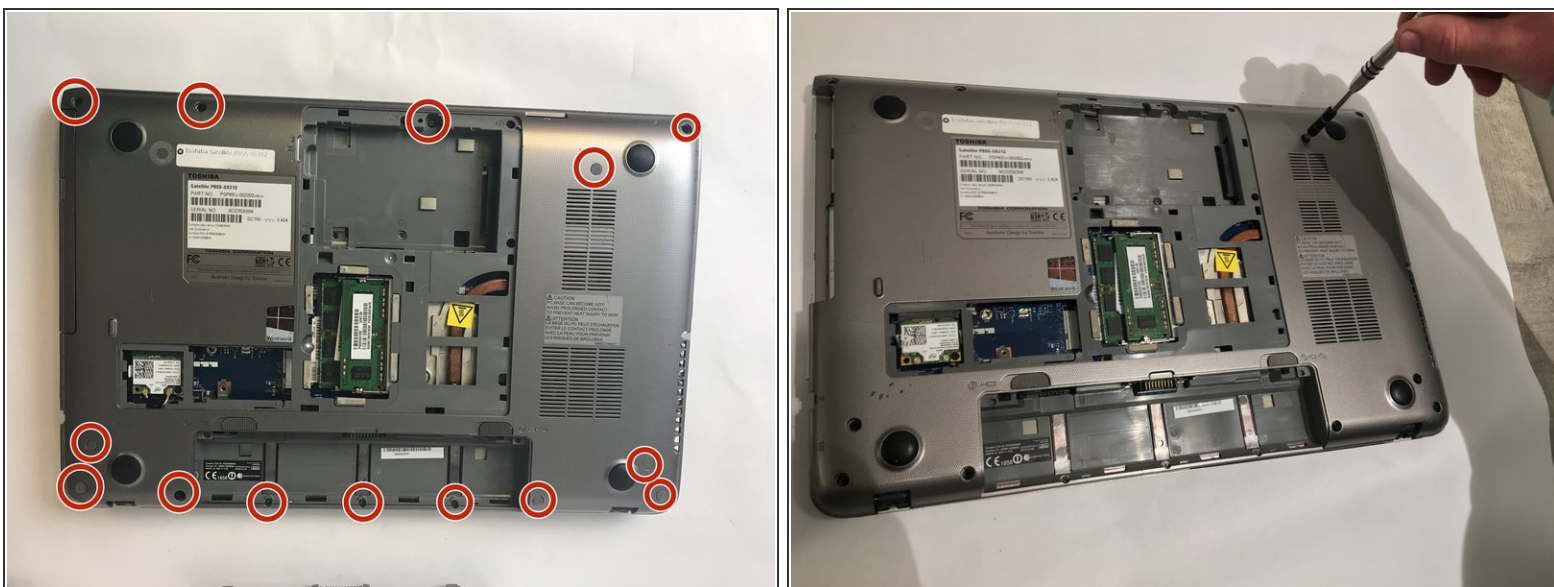
- Using plastic spudger to pry up the edges of the keyboard and lift it towards the screen.
- Unplug the ZIF connector ribbon using the plastic spudger by gently prying the edges of the plug.
- Remove the keyboard from the device.

Step 3 — Fan



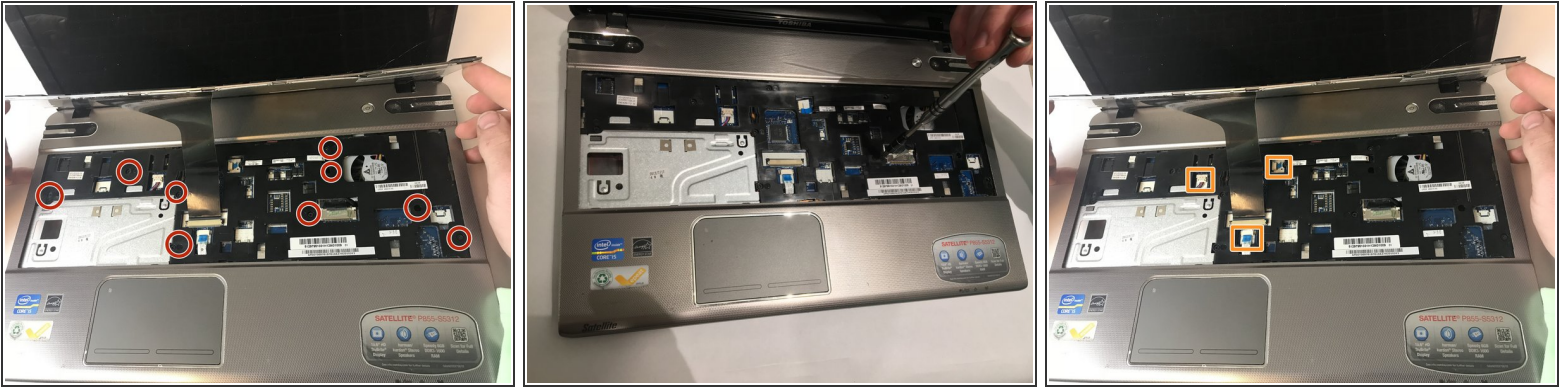
- Unscrew the one 1.5mm screw using a Philips #0 screwdriver holding the L shape panel.
- Pry up the panel to gain access to hidden screws.

Step 4



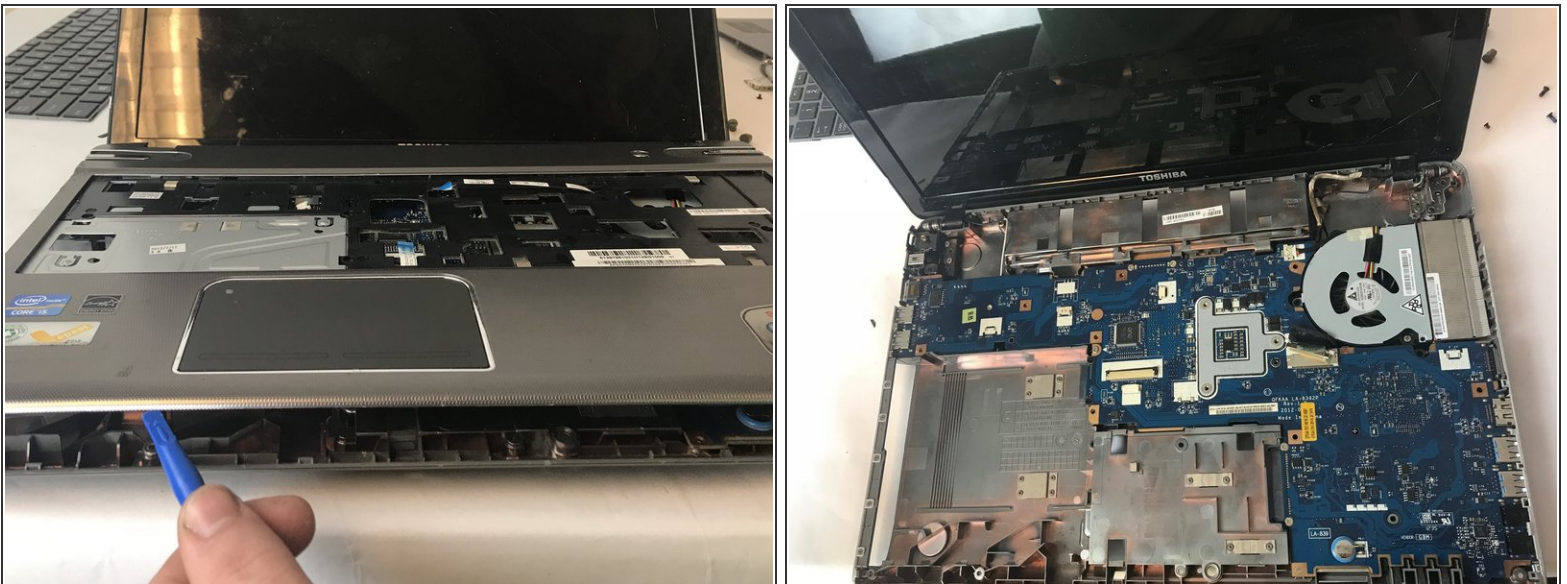
- Remove the fourteen (14) screws using a Philips #0 screwdriver for the 1.5mm screws on the underside of casing.

Step 5



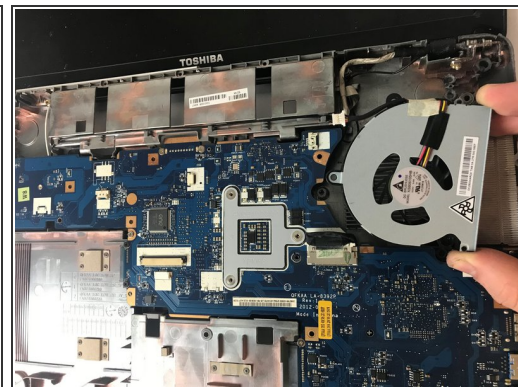
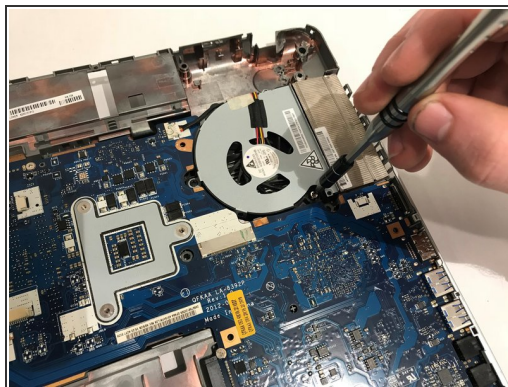
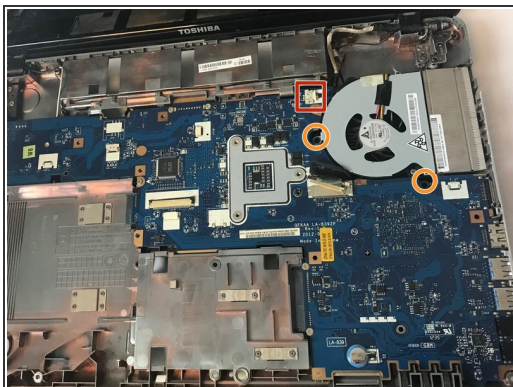
- Unscrew the nine 1.5mm screws using a Philips #0 screwdriver under the keyboard with the F6 printed next to them.
- Unplug the three no-fuss ribbon cable connector cables by gently pulling on them away from you towards the keyboard.

Step 6



- Pry apart the casing with the plastic opening tool.
- Removing the cover under keyboard.

Step 7



- Unplug the single no-fuss cable connector using the plastic opening tool pushing the edges towards the fan.
- Unscrew the two 1.5mm screws using a Philips #0 screwdriver by the head mounting holding down the fan.
- Pull the fan up and remove it from the device.

To reassemble your device, follow these instructions in reverse order.