



Toshiba Satellite P855-S5312 Disk Drive Replacement

This guide will help the user replace the disk drive on the Toshiba Satellite P855-S5312 .

Written By: Bishop Clark



INTRODUCTION

This guide will help the user replace the disk drive on the Toshiba Satellite P855-S5312 . Reasons for replacement include jammed or unresponsive disk. Philips size 0, Tools required for task are phillips size 0 Screwdriver, Plastic Opening Tools, and Pointed edge tool.



TOOLS:

- [Phillips #0 Screwdriver](#) (1)
 - [iFixit Opening Tools](#) (1)
 - [Spudger](#) (1)
-

Step 1 — Battery



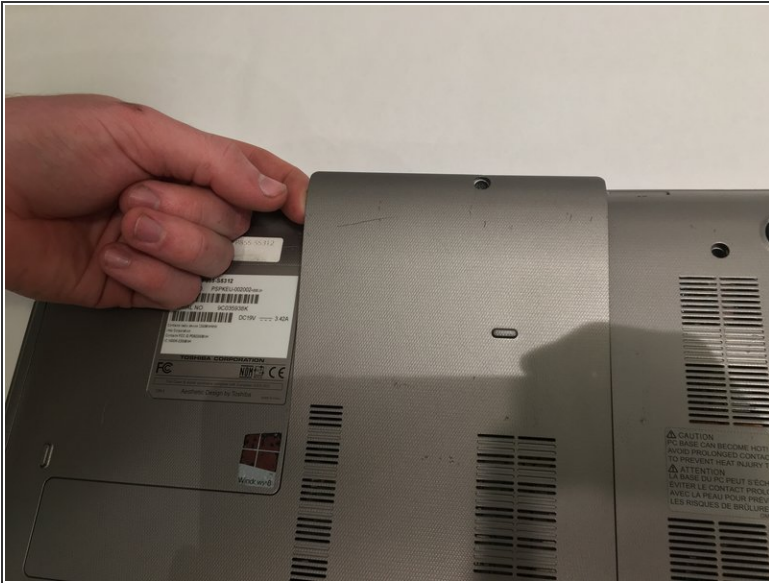
- Turn laptop upside down with the spine facing towards you and locate the two tabs on the top of the back panel.
- Move the sliders to the left and right to release the tabs holding the battery in.
- While the tabs are pushed outwards, remove the battery from the device.

Step 2 — Disk Drive



- Once laptop is turned over with the spine facing you, locate the large L shape panel.
- Using a Philips #0 screwdriver unscrew the 1.5mm screw towards the bottom of the laptop.

Step 3



- Open the motherboard access cover.

Step 4



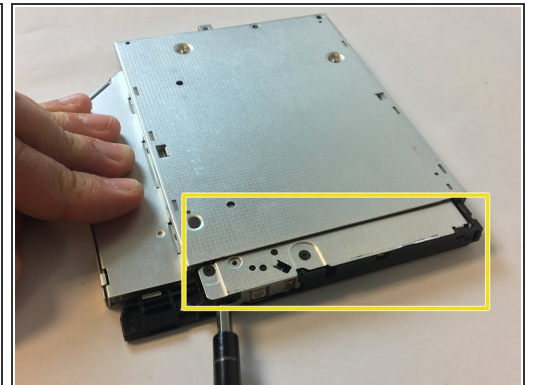
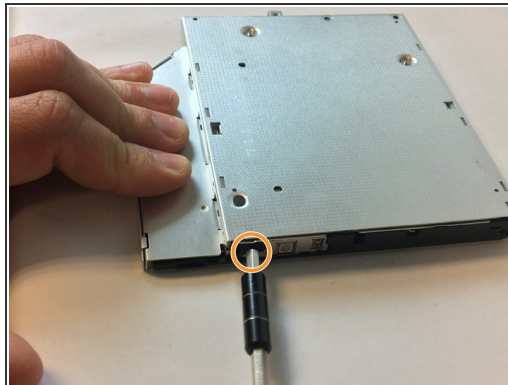
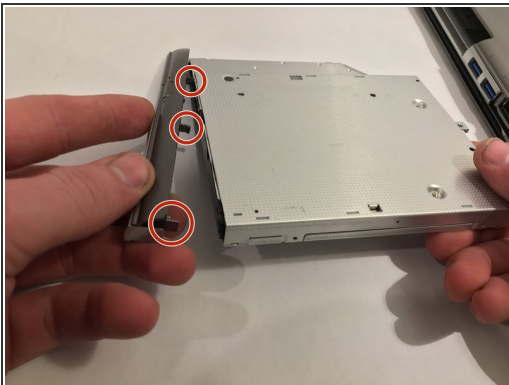
- Using a Philips #0 screwdriver, unscrew the 1.5mm screw located near the left edge of the opening near the mother board.

Step 5



- Gently pull the entire disk drive assembly out.

Step 6



- Flip your device over and rotate the side of the optical drive over to you.
- Unclip the clips on the side of the automatic release.
- Use a paper clip or small needle tool to insert in the manual release located on the right of the automatic release button.
- Once released slide the aluminum case out.

To reassemble your device, follow these instructions in reverse order.