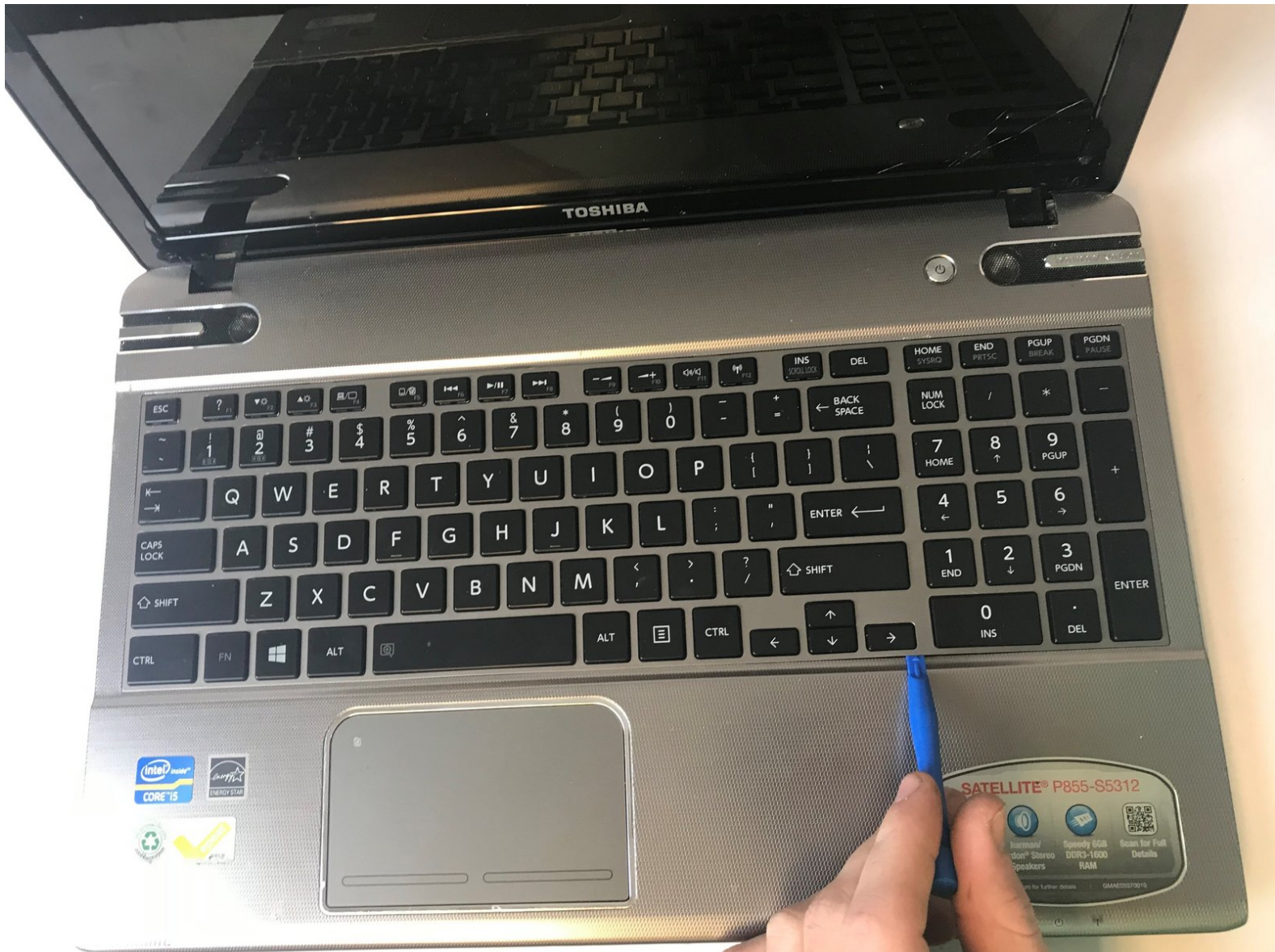




Toshiba Satellite P855-S5312 Keyboard Replacement

Guide is to replace the keyboard for the Toshiba Satellite P855-S5312.

Written By: Dalton



INTRODUCTION

This guide can be used to replace the keyboard for the Toshiba Satellite P855-S5312. Causes for replacement include unresponsive keys and keyboard.



TOOLS:

- [iFixit Opening Tools](#) (1)



PARTS:

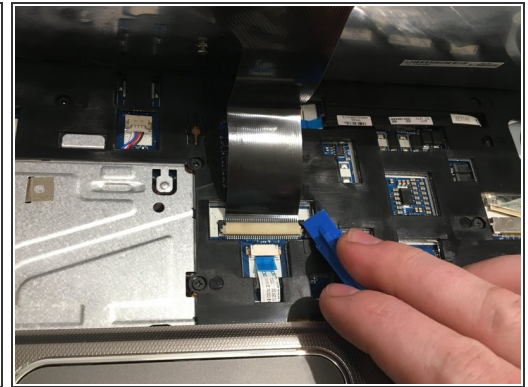
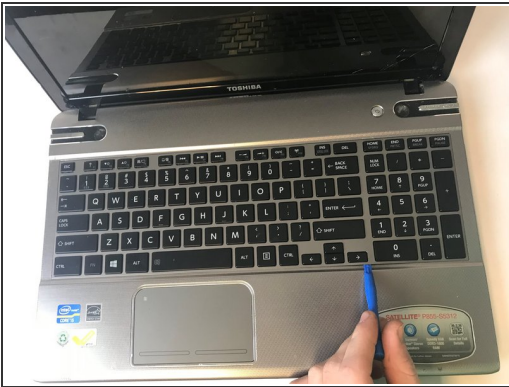
- [keyboard panel](#) (1)

Step 1 — Battery



- Turn laptop upside down with the spine facing towards you and locate the two tabs on the top of the back panel.
- Move the sliders to the left and right to release the tabs holding the battery in.
- While the tabs are pushed outwards, remove the battery from the device.

Step 2 — Keyboard



- Using plastic spudger to pry up the edges of the keyboard and lift it towards the screen.
- Unplug the ZIF connector ribbon using the plastic spudger by gently prying the edges of the plug.
- Remove the keyboard from the device.

To reassemble your device, plug the ribbon into circuit board and snap the replacement keyboard in place.

