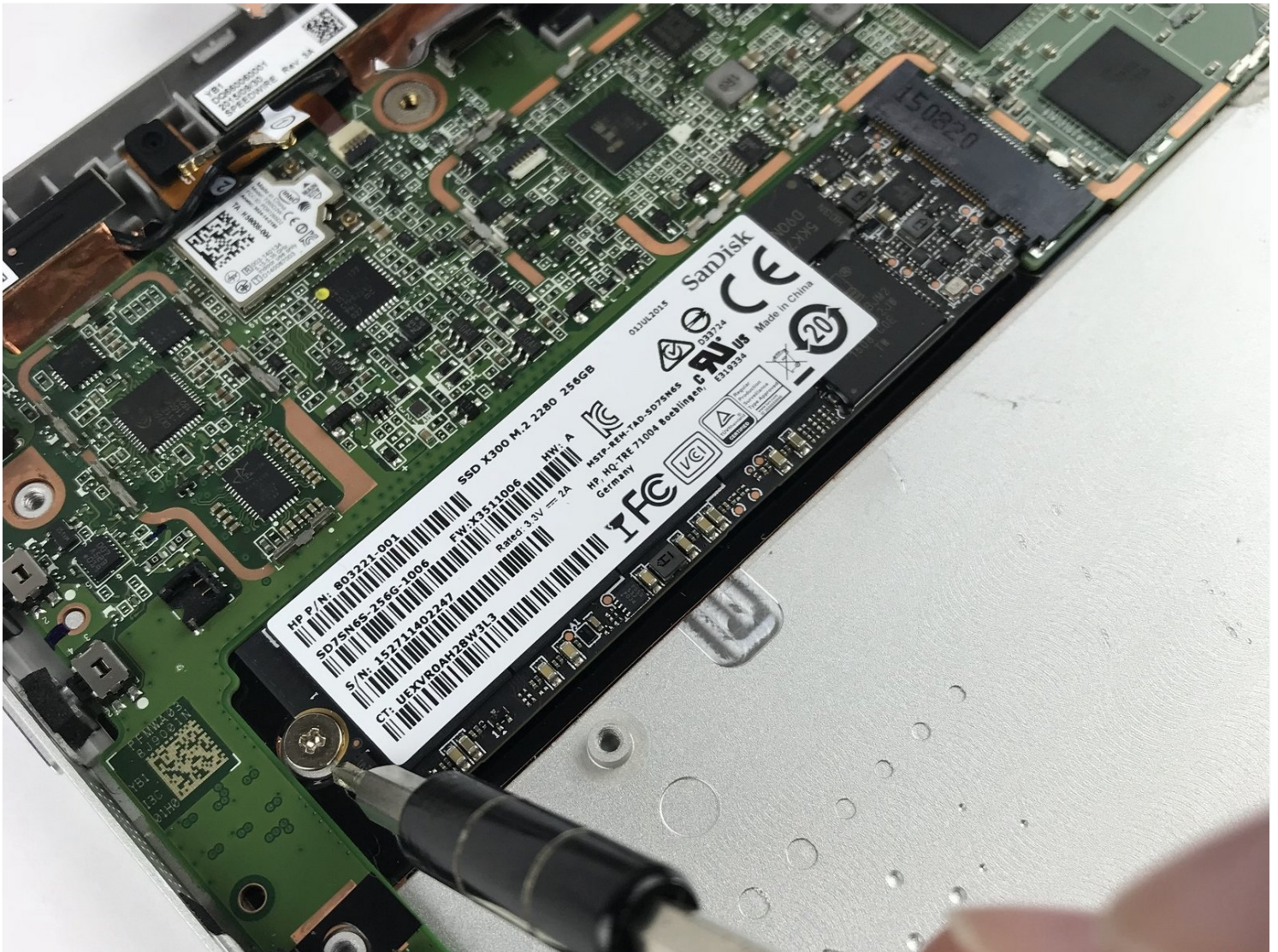




HP Spectre x2 12-a002dx SSD Replacement

Solid State Drives (SSDs) usually don't have a...

Written By: Talha Bin Amir



INTRODUCTION

Solid State Drives (SSDs) usually don't have a lot of storage which is why running out of storage space on your device is really common. This guide shows how to replace and upgrade the SSD on this device.

TOOLS:

[Spudger](#) (1)

[iFixit Opening Tool](#) (1)

[Heat Gun](#) (1)

[Tweezers](#) (1)

[JIS #00 Screwdriver](#) (1)

[Phillips PH000 Screwdriver](#) (1)

Step 1 — Screen



- Make sure the device is powered off and the kick stand is retracted.
- The HP Spectre should be placed on a flat surface with the keyboard detached.

Step 2



- To remove the screen, there is an entire system of clips which need to be undone as well as 4 Phillips M1.5x2.7 screws.
- The screws should be removed using a Phillips #000 screwdriver. There is a sticker where the laptop attaches to the keyboard.
- Heat the sticker (if needed) and use fine point tweezers to grip the sticker and remove it.

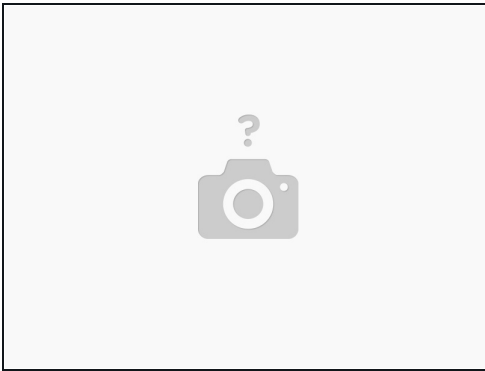
Step 3



- Use the plastic opening tools or insert a spudger to begin unclipping the system.
- Pry the screen off once all the clips have been unclipped.

⚠ The screen may shatter if not already shattered (beware of flying glass).

Step 4



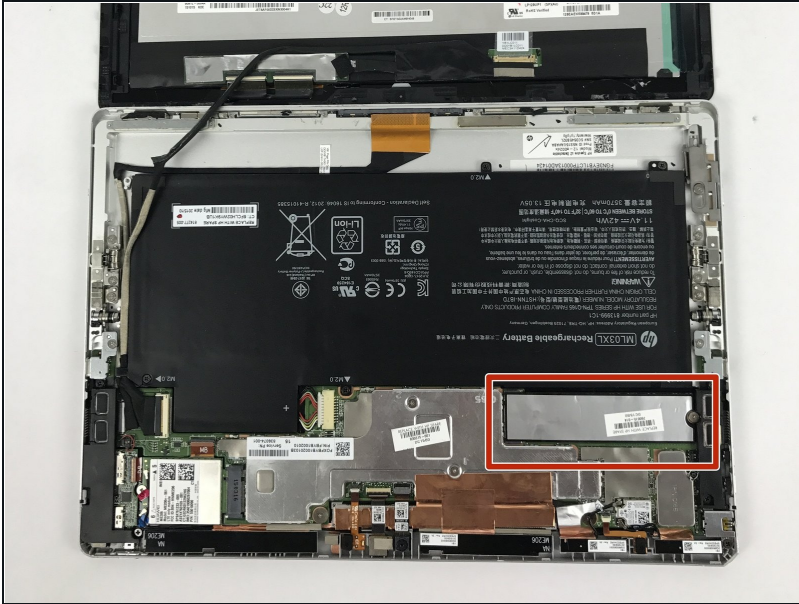
- This screen will break. There is double tape underneath the frame, which is not listed in here.

Step 5



- Remove the connecting cable of the screen and battery. Use a spudger to reveal the adhesive strip and carefully peel it off.
 - Insert a spudger to the other end and release the ZIF connectors. Detach the cable.
- ⓘ While a metal spudger is pictured, use a black nylon spudger instead because it is ESD safe.

Step 6 — SSD



- Once you have successfully removed the screen, locate the solid state drive (SSD).

Step 7



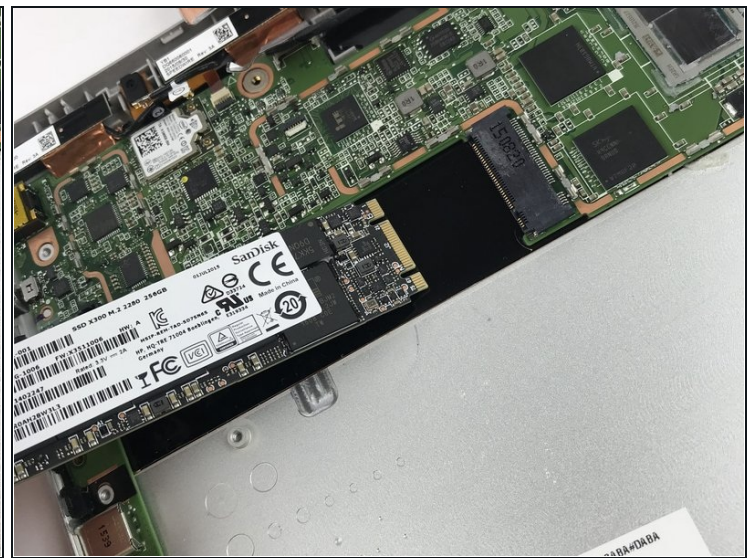
- Unscrew the PM2.0x2.5 screw on the SSD using a JIS00 screwdriver.
- Store the screw in a safe place. You will need it to secure the replacement SSD in place.

Step 8



- Next, carefully peel the sticker on top of the SSD off.

Step 9



- Carefully, pull the SSD out of the slot at an angle.

To reassemble your device, follow these instructions in reverse order.