



How to Rewire a Lamp

Rewiring a lamp is an easy process. Lamps can...

Written By: Molly



INTRODUCTION

Rewiring a lamp is an easy process. Lamps can be very expensive if not bought at a discount or thrift store. If people are able to rewire their lamps from home, knowing this process would save money to buy an entirely new lamp. Most of these tools to rewire a lamp can be found in the average person's house. However, if they are not readily available available to the person fixing the lamp they will be able to purchase these items at the nearest Lowe's or Home Depot.

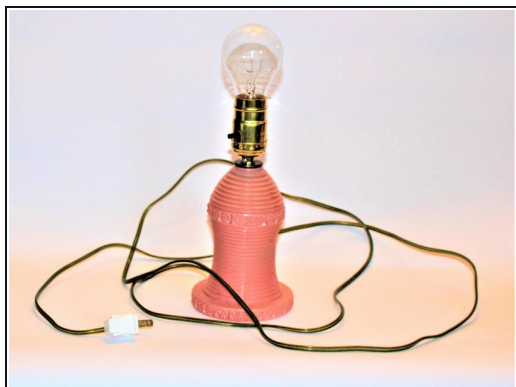
TOOLS:

Phillips #0 Screwdriver (1)

Wire Stripper (1)

Electrical Tape in 6 Assorted Colors (1)

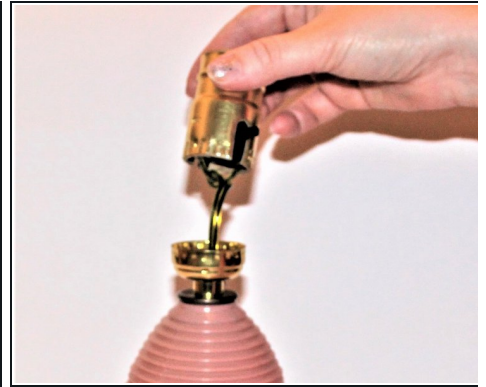
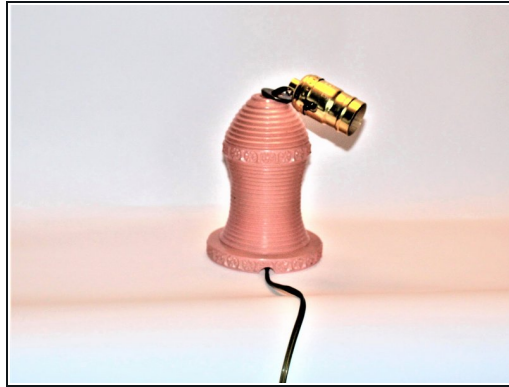
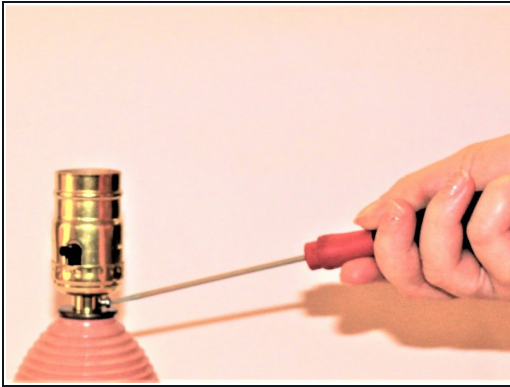
Step 1 — Cord



- Before starting the process, remove the lamp shade and bulb by hand.

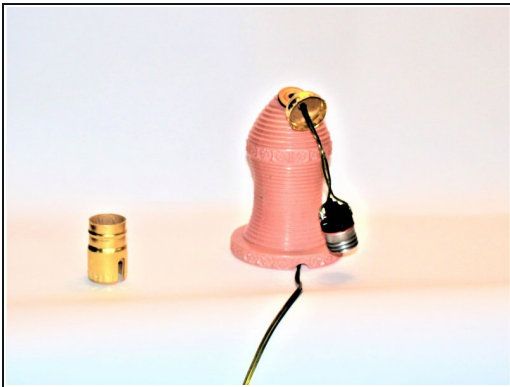
 Make sure the lamp is unplugged to avoid the risk of electrocution.

Step 2



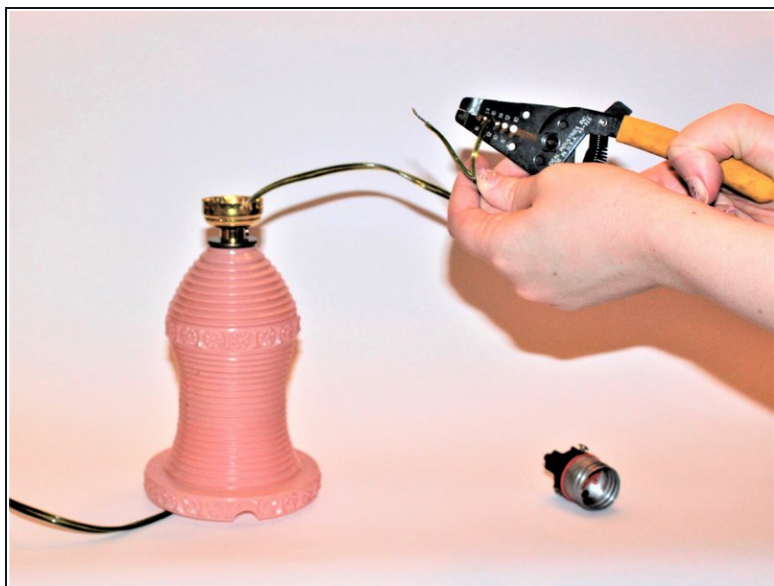
- Loosen the setscrew with the screwdriver so you can unscrew the socket base.
- Unscrew the socket base from the threaded tube with your hand.

Step 3



- With your hand, pry the socket shell out of its base.
 - Remove the socket with your hand and then cut the wires with the wire cutters.
- i** The neutral wire connects to the wide plug blade and is distinguished from the hot wire by ribs, color, printing, or indentations in the plastic insulation.

Step 4



- Strip off 1/2" of the insulation with the wire stripper and twist the wire strands together by hand.

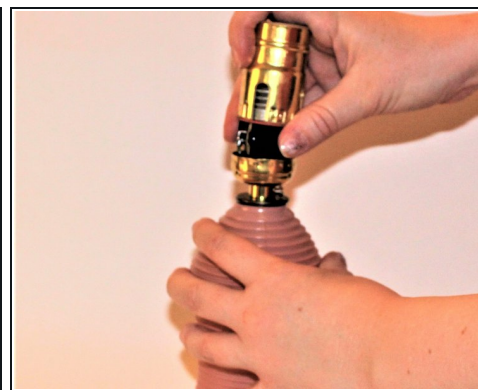
☛ If you pull off any wire strands while stripping, cut back the cord with the Diagonal cutter.

Step 5



- By hand, tie an underwriters knot in the cord.
- Also by hand, connect the wires by wrapping them clockwise around the screws and tighten and connect the neutral wire to the silver screw.
- ① An underwriter's knot prevents the wires from pulling out of the screw terminals when cord is tugged. (The entire process of tying an underwriter knot can be done by hand . Form a loop using the first wire. Then, form a loop around the first wire and pass the tail through its loop. The strain on the cable is now taken by the knot.)

Step 6



- By hand, pull the excess cord down through the lamp.
- Still using your hand, slip the insulation sleeve and socket shell over the socket and snap the shell into the base.