



Samsung POWERbot R7070 Battery Replacement

Accessing and replacing the battery.

Written By: Lauren Nubla



INTRODUCTION

Gain power and a longer battery life by replacing the POWERbot's battery. Replacing your POWERbot's battery can resolve the C 11 error code.



TOOLS:

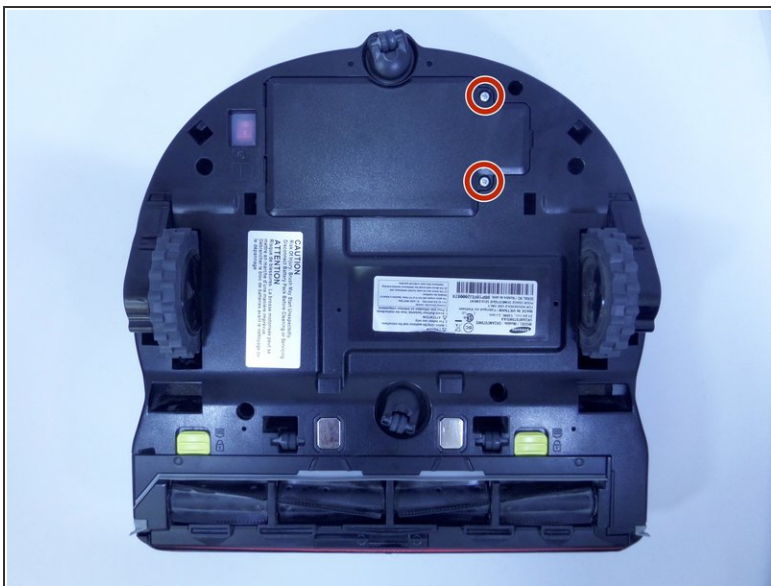
- [Phillips #1 Screwdriver](#) (1)
-

Step 1 — Battery



- Turn the emergency switch off.

Step 2



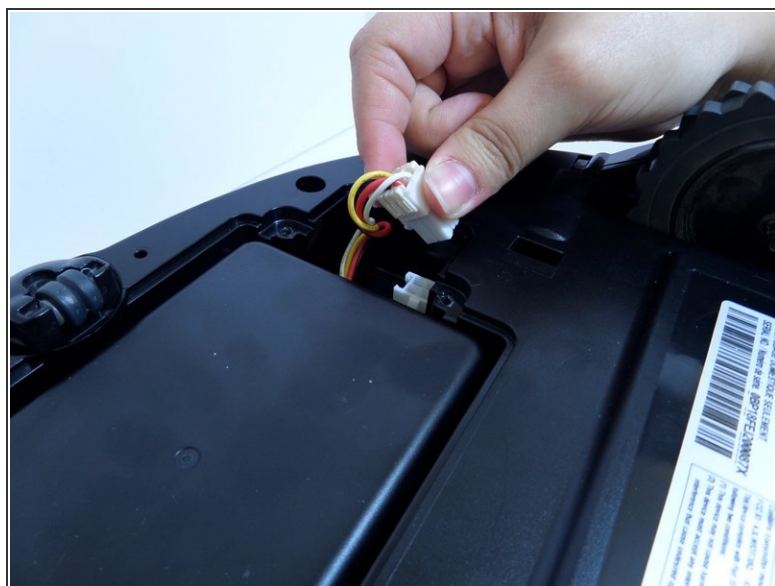
- Remove the two exposed screws on the top right of the device.

Step 3



- Lift the cover plate to expose the battery.

Step 4



- Using one hand, pinch the white plastic connector where the battery's wiring connects the POWERbot. Pull up to disconnect.

Step 5



- Lift the battery from the right side, up and out of its compartment.

To reassemble your device, follow these instructions in reverse order.