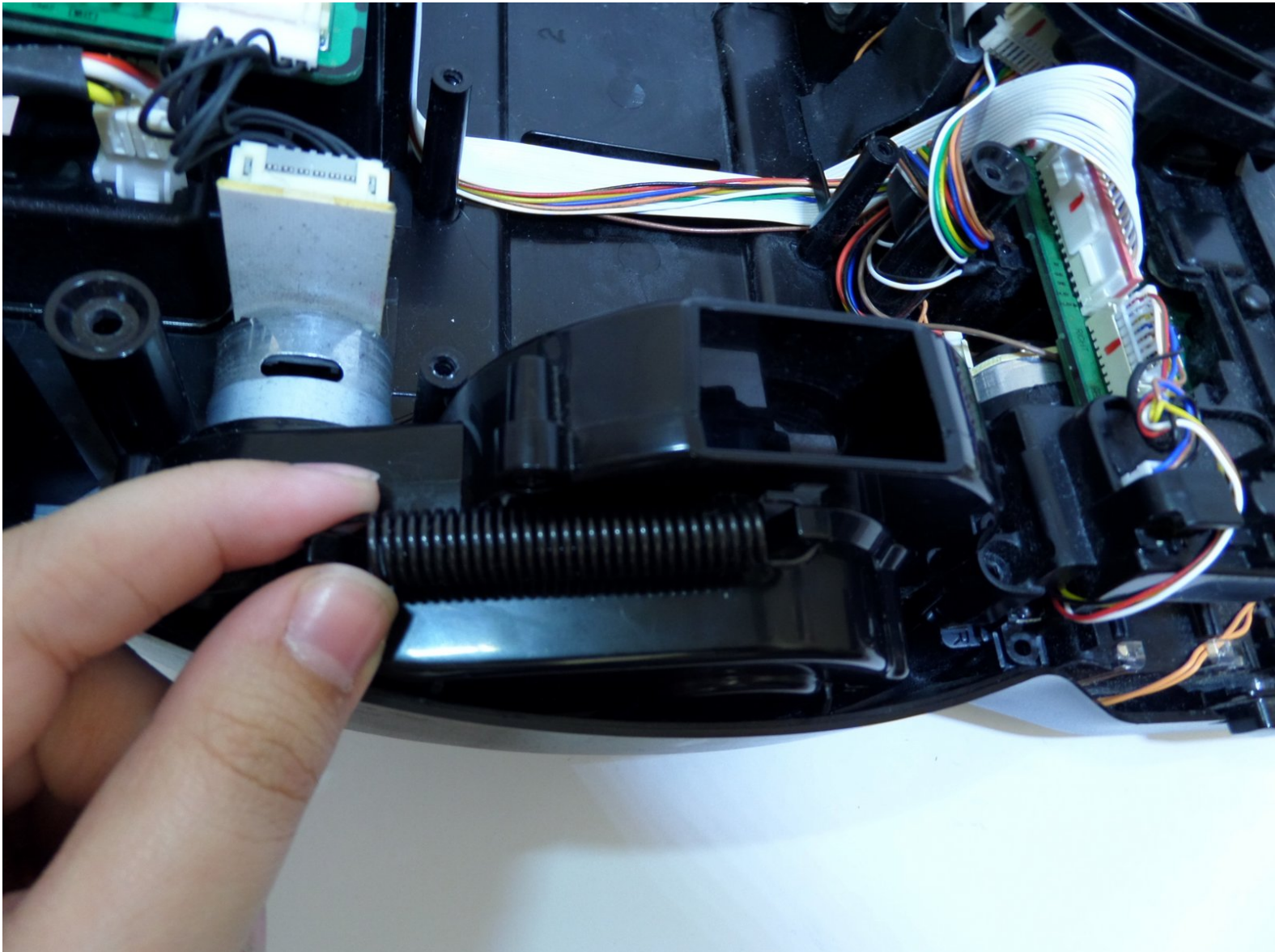




Samsung POWERbot R7070 Right Driving Wheel Replacement

Accessing and replacing the right driving wheel.

Written By: Lauren Nubla



INTRODUCTION

Replace the right driving wheel of your POWERbot to end movement problems . To resolve the C 03 error code, replace the right driving wheel.



TOOLS:

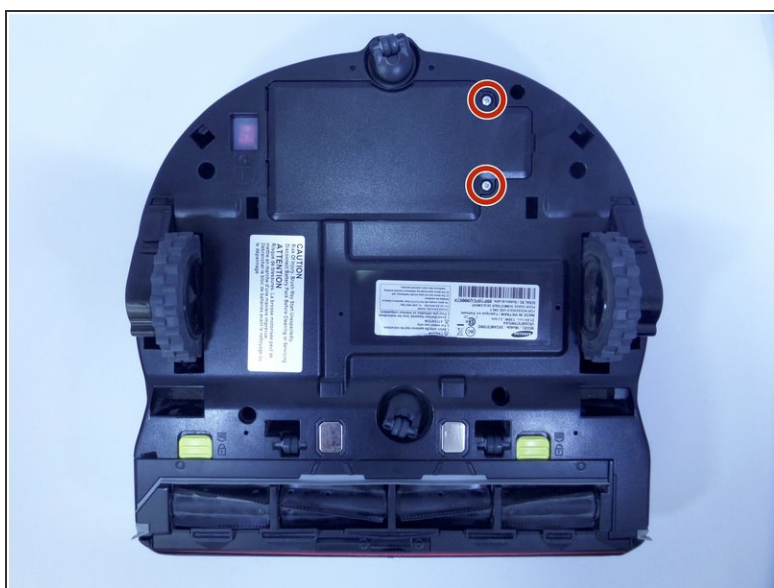
- [Phillips #1 Screwdriver](#) (1)
-

Step 1 — Battery



- Turn the emergency switch off.

Step 2



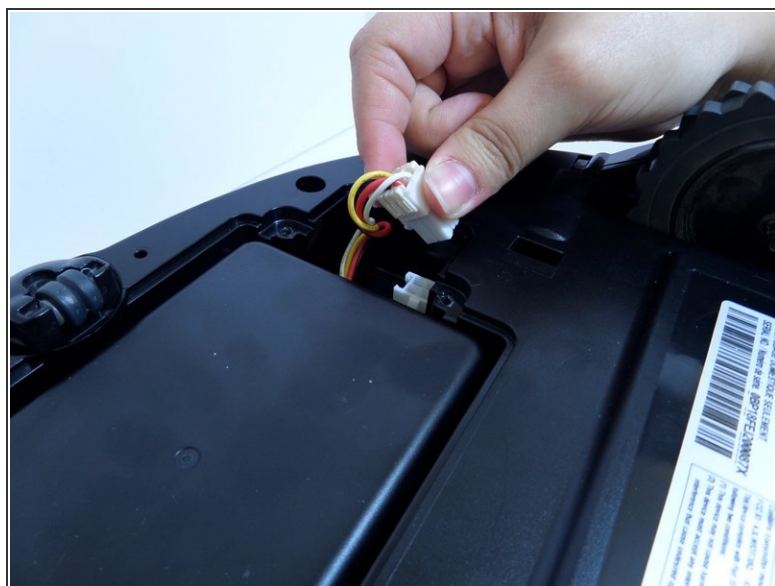
- Remove the two exposed screws on the top right of the device.

Step 3



- Lift the cover plate to expose the battery.

Step 4



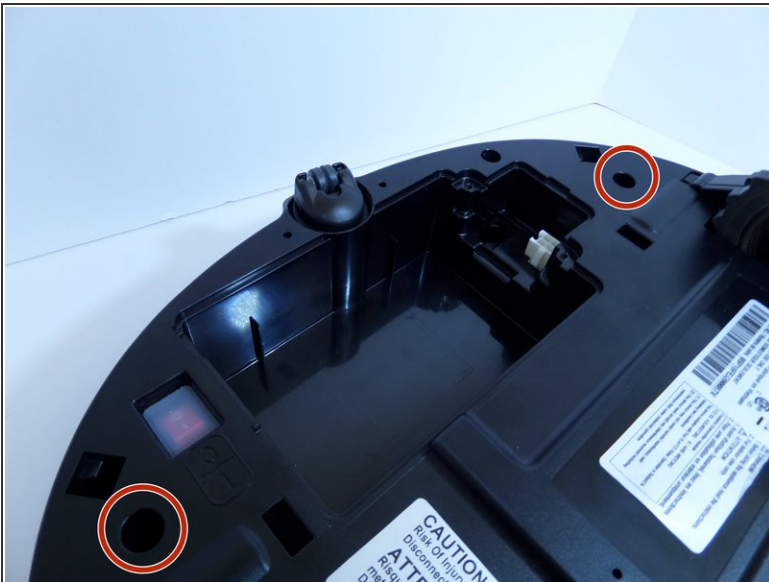
- Using one hand, pinch the white plastic connector where the battery's wiring connects the POWERbot. Pull up to disconnect.

Step 5



- Lift the battery from the right side, up and out of its compartment.

Step 6 — Motor



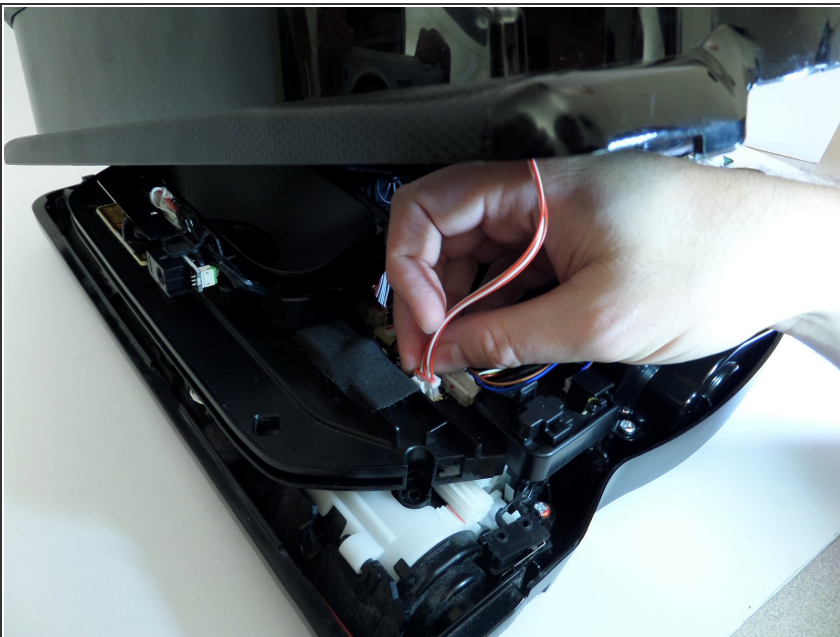
- Unscrew the two silver 1.5 cm screws on the left and right side of the battery compartment.
- Remove the two 1.5 cm screws above the yellow sliding lock tabs.
- Remove the two 1.2 cm screws in the brush compartment.

Step 7



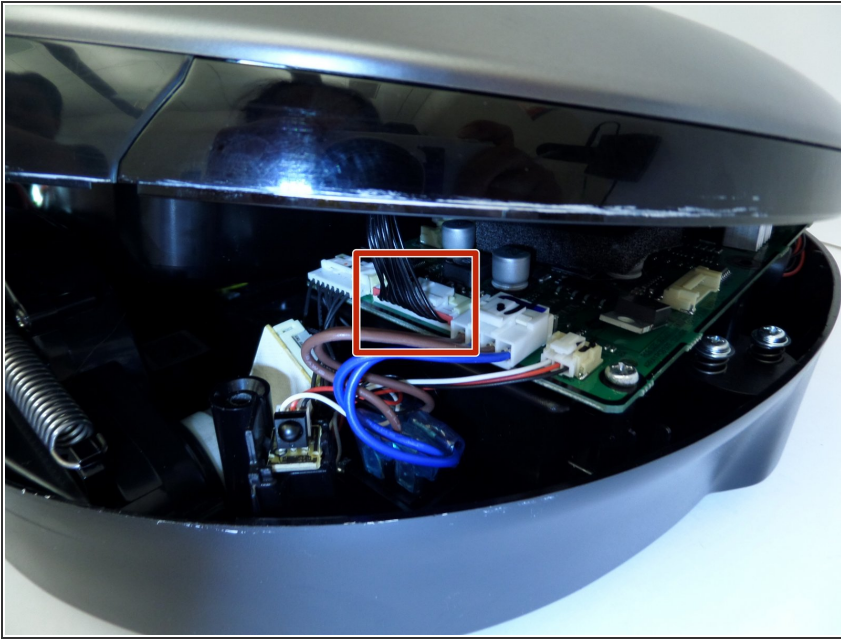
- With moderate force, separate the silver top from the black bottom of the vacuum.
- ⓘ The cover will only separate a few inches as the two halves are connected by wires.

Step 8



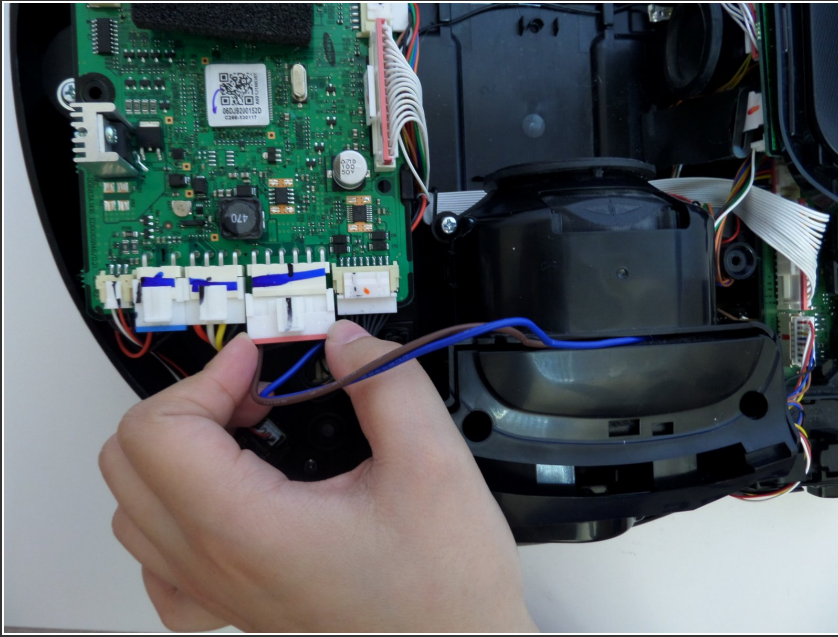
- Disconnect the white and red wired connector attached to the top half of the base of the vacuum by squeezing the connector and pulling up.

Step 9



- Pinching the top and bottom of the black wired connector, pull outward, fully detaching the top from the bottom of the device.

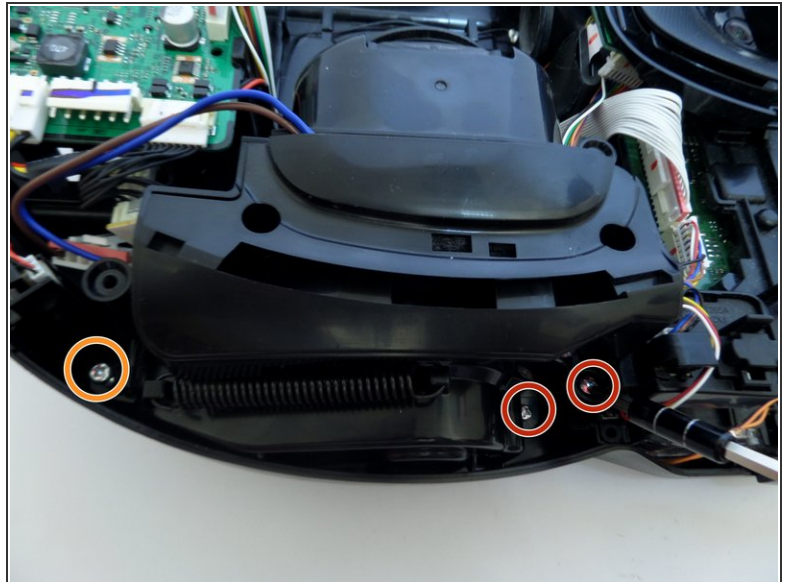
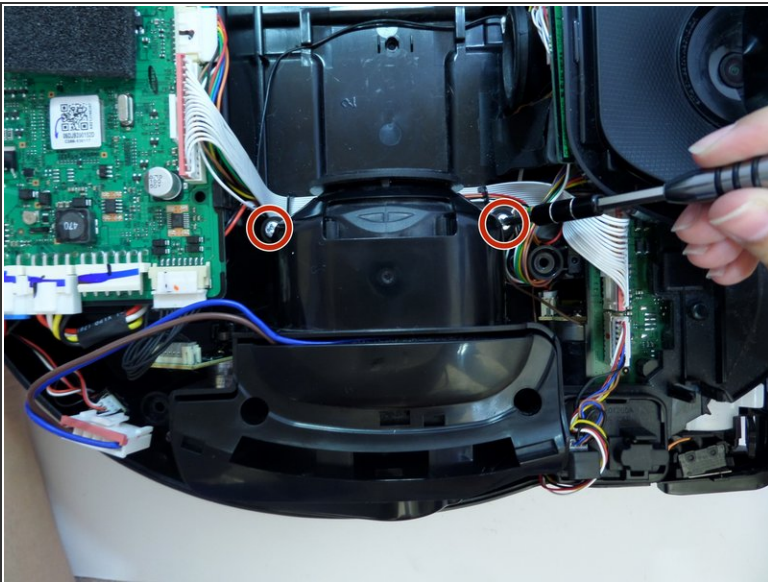
Step 10



- Detach the wide circuit connector on the left side by pinching and pressing down on the right and left side of the clip, pulling the connector out.

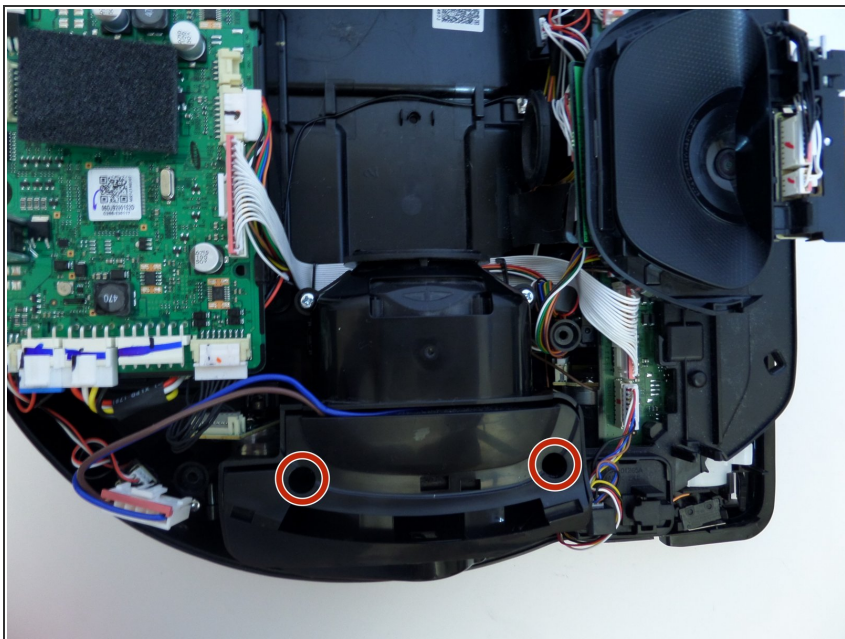
⚠ Pull the connector out by the left and right side of the white clip and not by the wires.

Step 11



- Remove the four 1.2 cm screws.
- Remove the single 0.8 cm screw.

Step 12



- Remove the two 1.5 cm screws on the motor chamber.

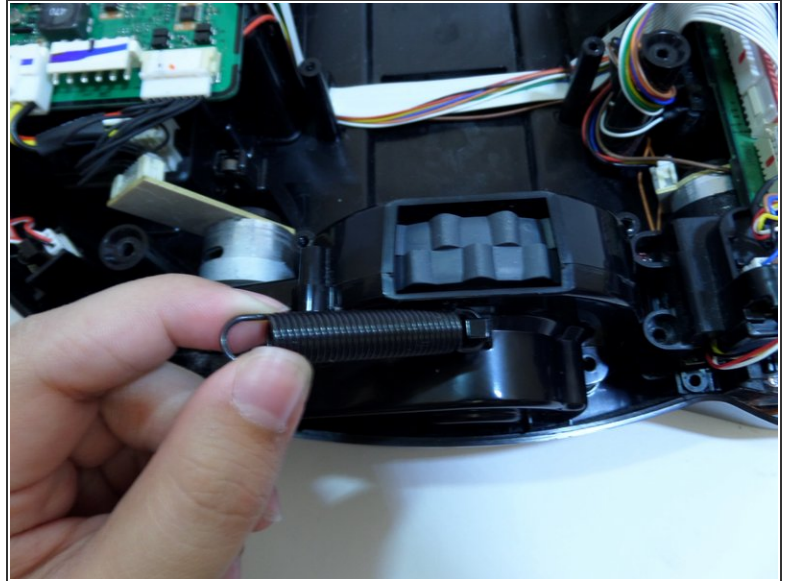
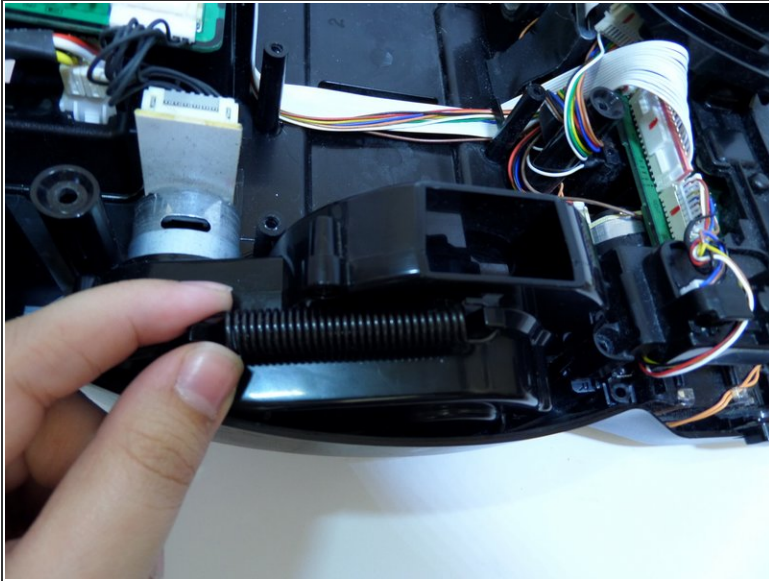
Step 13



- Lift the motor by grabbing the body of the motor, lifting upward.

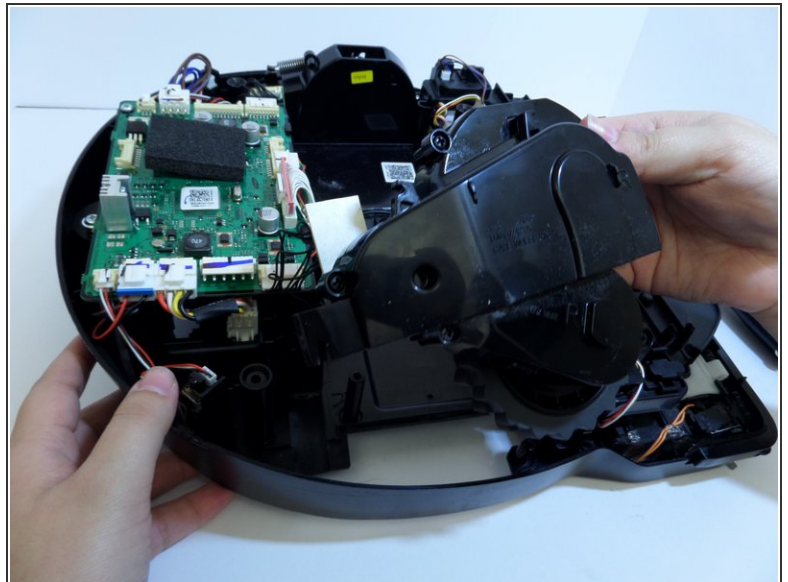
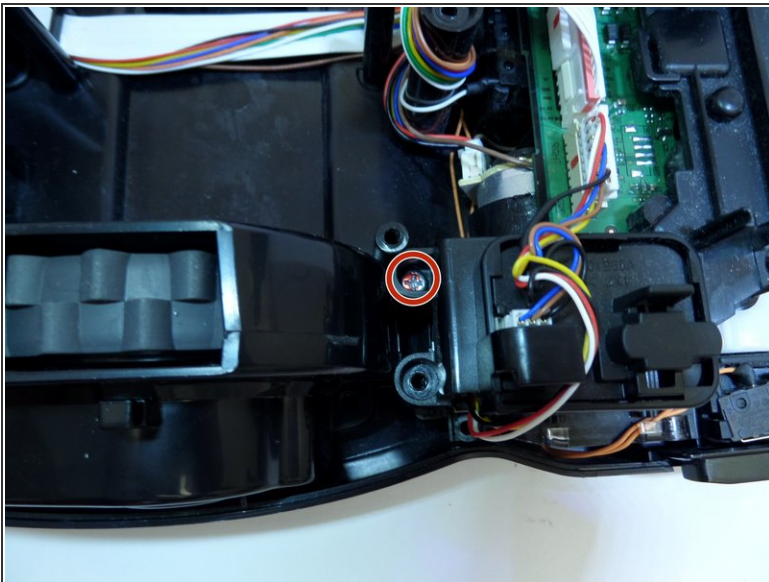
⚠ With the screws removed from the motor chamber the top of the motor chamber will pop open.

Step 14 — Right Driving Wheel



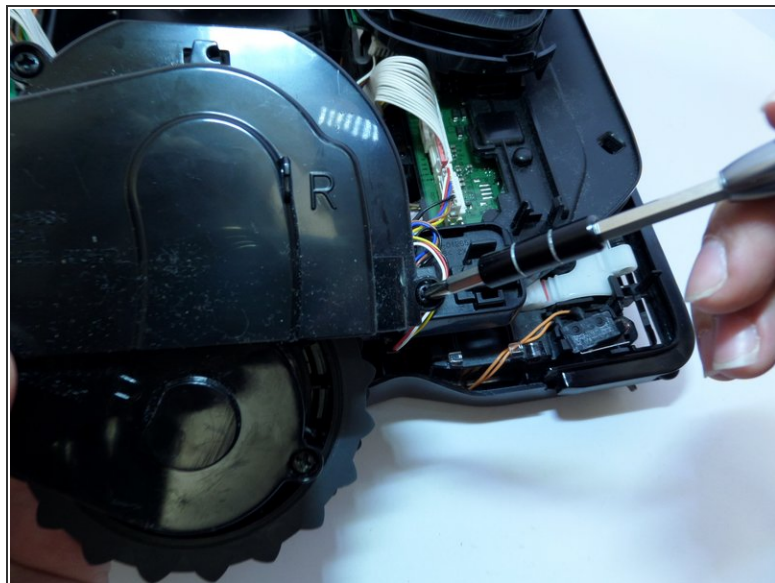
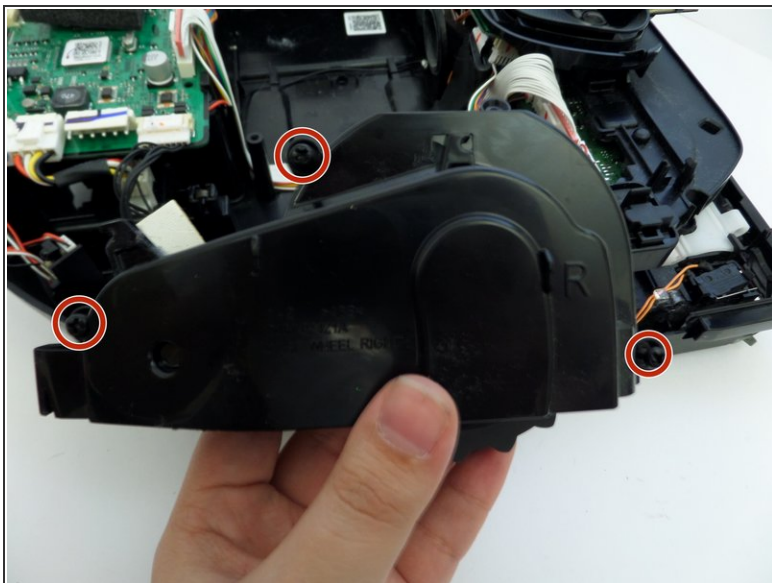
- With the spring fully retracted, unhook the spring from the wheel casing.

Step 15



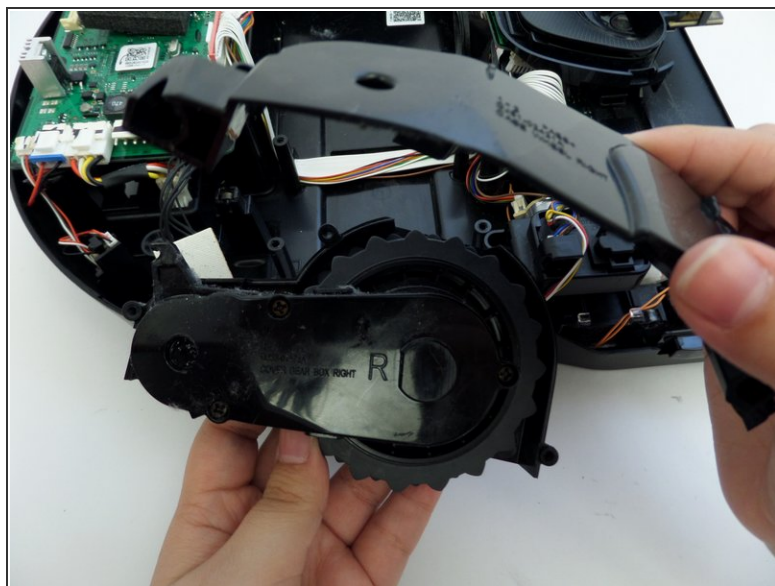
- Remove the screw securing the black plastic piece to the right of the wheel casing.
- ⓘ This piece is not part of the wheel casing but must be unscrewed to remove the wheel casing.
- Lift wheel and wheel casing out of vacuum base.

Step 16



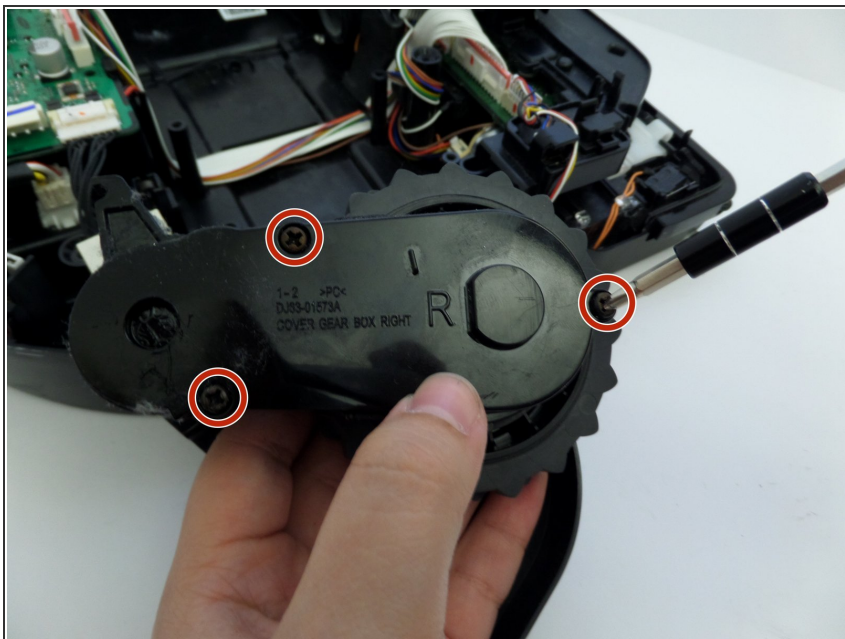
- Remove the three screws fastening the two halves of the wheel casing together.

Step 17



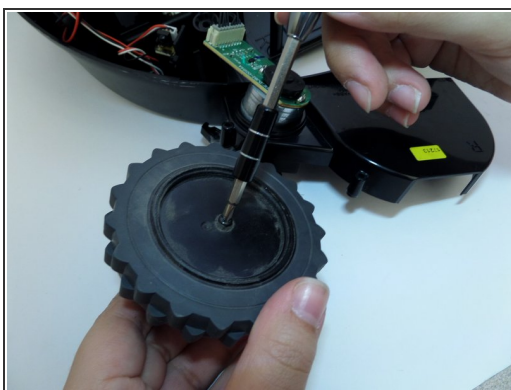
- Separate the unsecured half of the wheel casing, exposing the wheel.

Step 18



- Remove the three screws on the remaining half of the wheel casing.

Step 19



- Unscrew the black 1 cm screw securing the center of the wheel.
- Remove the wheel.

To reassemble your device, follow these instructions in reverse order.